

RCA1000, RCA1001

File Number 594

T-33-29

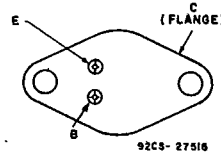
8-Ampere Silicon N-P-N Darlington Power Transistors

For Use as Output Devices in General-Purpose
Switching and Amplifier Applications

Features:

- High dc current gain:
hFE = 1000 min. at IC = 3 A
- Monolithic construction

TERMINAL DESIGNATIONS



JEDEC TO-204AA

RCA1000 and 1001 are monolithic silicon n-p-n Darlington transistors intended for medium-power applications as output devices. The construction of these units provides good forward-bias second-breakdown capability. Their high gain makes it possible for them to be driven directly from integrated circuits.

These devices are supplied in the JEDEC TO-204AA hermetic steel package.

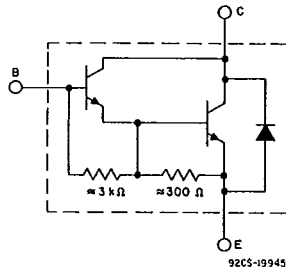


Fig 1 — Schematic diagram for all types.

MAXIMUM RATINGS, Absolute-Maximum Values:

		RCA-1000	RCA-1001	
COLLECTOR-TO-BASE VOLTAGE				
With emitter open	V _{CB0}	60	80	V
COLLECTOR-TO-EMITTER VOLTAGE				
With base open	V _{CE0}	60	80	V
EMITTER-TO-BASE VOLTAGE				
With collector open	V _{EB0}	5	5	V
COLLECTOR CURRENT:	I _C			
Continuous		8	8	A
Pulsed		15	15	A
BASE CURRENT (Continuous)	I _B	0.1	0.1	A
TRANSISTOR DISSIPATION	P _T			
At case temperatures up to 25°C		90	90	W
At case temperatures above 25°C, derate linearly at			0.515	W/°C
TEMPERATURE RANGE				
Storage & Operating (Junction)		-55 to +200		°C
LEAD TEMPERATURE (During Soldering)				
At distance ≥ 1/8 in. (3.17 mm) from case to 10 s max.		235		°C

RCA1000, RCA1001

T-33-29

ELECTRICAL CHARACTERISTICS, At Case Temperature (T_C) = 25°C unless otherwise specified

CHARACTERISTIC	SYMBOL	TEST CONDITIONS					LIMITS				UNITS
		DC VOLTAGE (V)			DC CURRENT (A)		RCA 1000		RCA 1001		
		V _{CB}	V _{CE}	V _{BE}	I _C	I _B	MIN.	MAX.	MIN.	MAX.	
Collector Cutoff Current With base open	I _{CEO}		30 40			0 0	- -	500 -	- -	- 500	μA
Collector Cutoff Current With external base-to-emitter resistance (R _{BE}) = 1 kΩ At T _C = 150°C	I _{CER}	60 80					- -	1 -	- -	- 1	mA
		60 80					- -	5 -	- -	- 5	
Emitter Cutoff Current	I _{EBO}			5		0	-	2	-	2	mA
Collector-to-Emitter Breakdown Voltage	V _{(BR)CEO}				0.1 ^a 0.1 ^a	0 0	60 -	- -	- 80	- -	V
DC Forward Current Transfer Ratio	h _{FE}		3 3		3 4		1000 750	- -	1000 750	- -	
Base-to-Emitter Voltage	V _{BE}		3		3 ^a		-	2.5	-	2.5	V
Collector-to-Emitter Saturation Voltage	V _{CE(sat)}				3 ^a 8 ^a	0.012 0.04	- -	2 4	- -	2 4	V
Thermal Resistance (Junction-to-Case)	R _{θJC}						-	1.94	-	1.94	°C/W

^a Pulsed Pulse duration ≤ 300 μs, duty factor ≤ 2%.

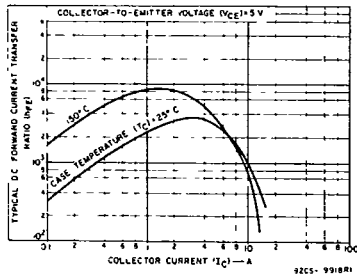


Fig 2 — Typical dc beta characteristics for both types.

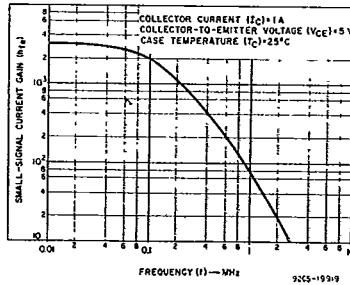


Fig 3 — Typical small-signal gain for both types.

T-33-29

RCA1000, RCA1001

HARRIS SEMICONDUCTOR SECTOR

27E D 4302271 0020494 2 HAS

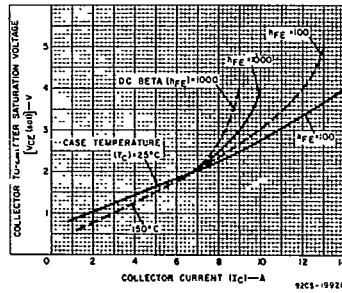


Fig. 4 — Typical saturation characteristics for both types.

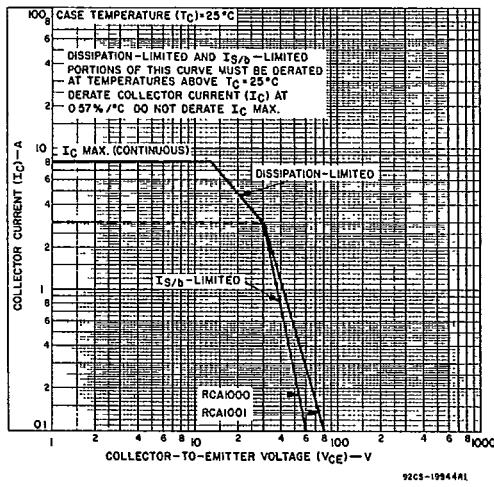


Fig. 5 — DC safe-area-of-operation for both types.