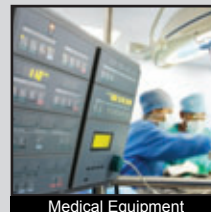
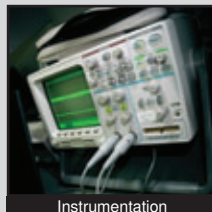
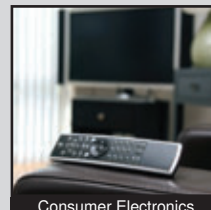
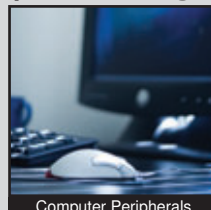
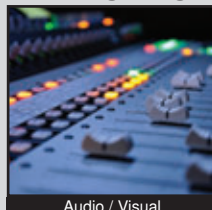


TL3253 SERIES TACT SWITCH

ANTI-VANDAL SWITCHES
 DETECTOR SWITCHES
 DIP SWITCHES
 KEYLOCK SWITCHES
 NAVIGATION SWITCHES
 PUSHBUTTON SWITCHES
 ROCKER SWITCHES
 ROTARY SWITCHES
 SLIDE SWITCHES
 SNAP ACTION SWITCHES
TACTILE SWITCHES
 TOGGLE SWITCHES
 CAP OPTIONS



APPLICATIONS / MARKETS



RoHS

SPECIFICATIONS

Electrical Rating: 50mA @ 12V DC
Life Expectancy: 500,000 Cycles
Contact Resistance: 100mΩ Max.
Insulation Resistance: 100 MΩ Min. at 100V DC
Dielectric Strength: 250V AC for 1 min.
Operating Temperature: -20°C to 70°C
Storage Temperature: -30°C to 80°C
Operating Force: 160 gf
Travel: 0.25mm
Contact Arrangement: SPST, Normally Open

FEATURES & BENEFITS

- Illumination options
- Dual stacked LEDs
- Right angle mount

PART NUMBER CONFIGURATOR

Series	Model	Upper Actuator Height	Upper Actuator LED	Upper Actuator Cap	Lower Actuator Height	Lower Actuator LED	Lower Actuator Cap	Operating Force	Contact Material
TL	3253	A - 6.60mm B - 8.55mm	Y - Yellow R - Red G - Green B - Blue W - White N - No LED	A - Stepped Transparent B - Round Transparent N - No Cap	A - 6.60mm B - 8.55mm	Y - Yellow R - Red G - Green B - Blue W - White N - No LED	A - Stepped Transparent B - Round Transparent N - No Cap	F160	Q - Silver

Specifications subject to change without notice



E-SWITCH®

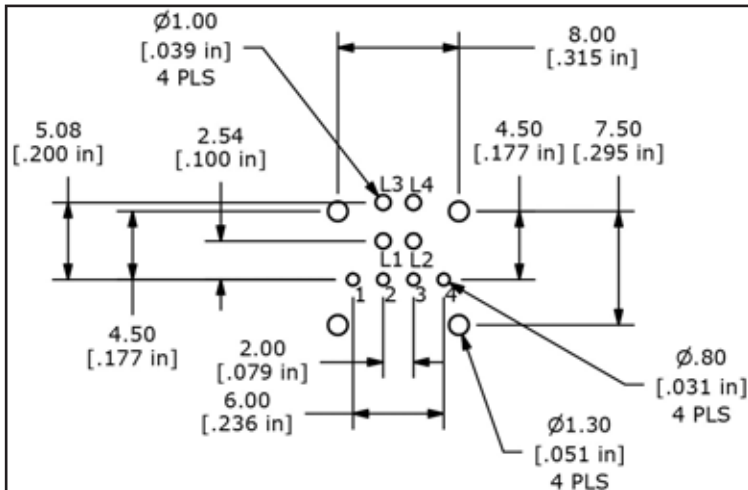
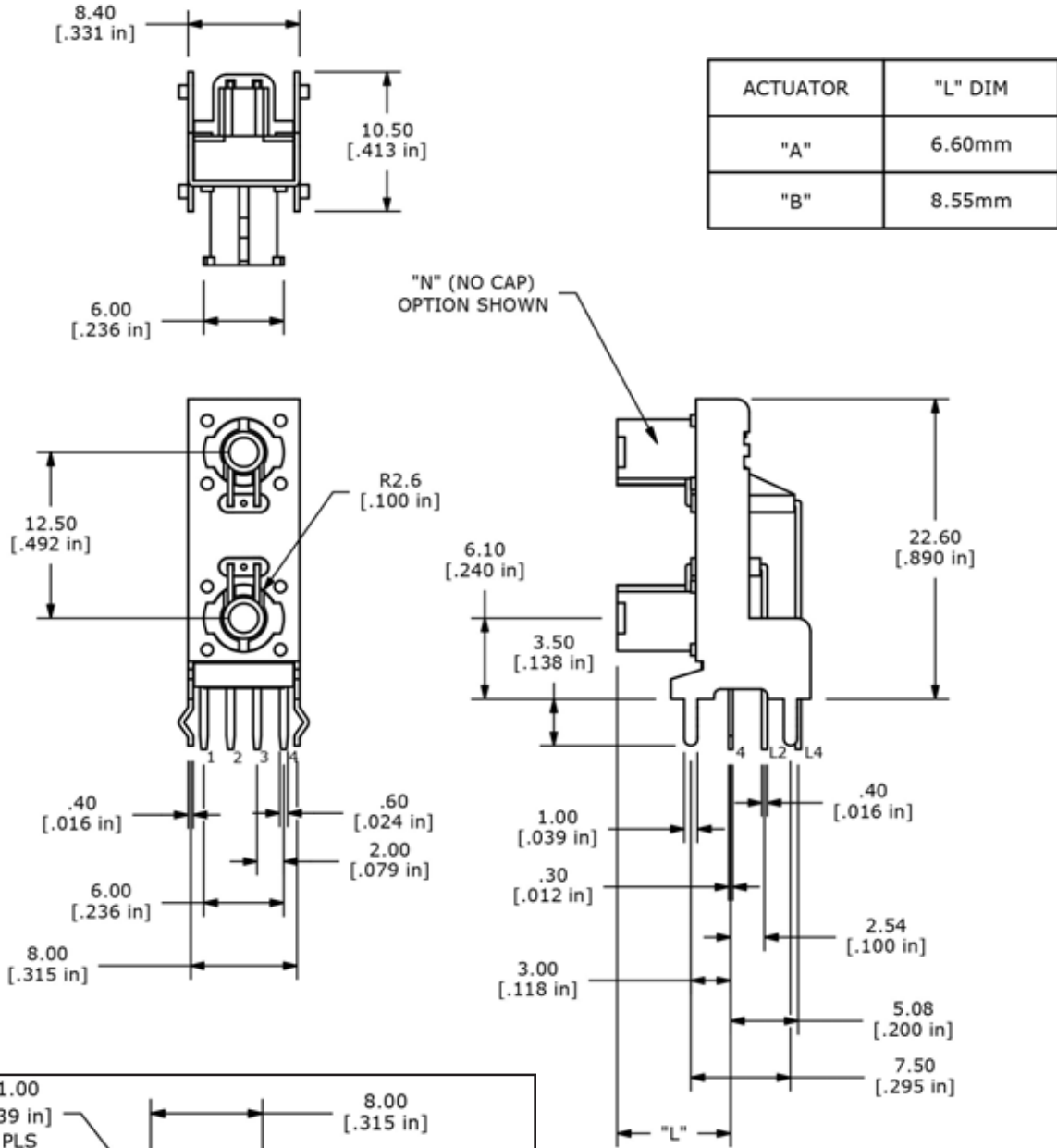
www.e-switch.com

800.867.2717

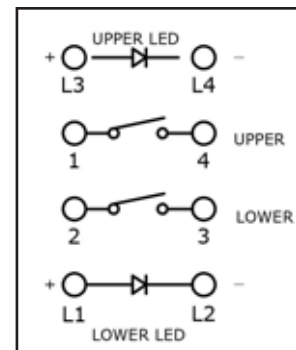
2

TL3253 SERIES TACT SWITCH

BODY DIMENSIONS



PCB LAYOUT



SCHEMATIC

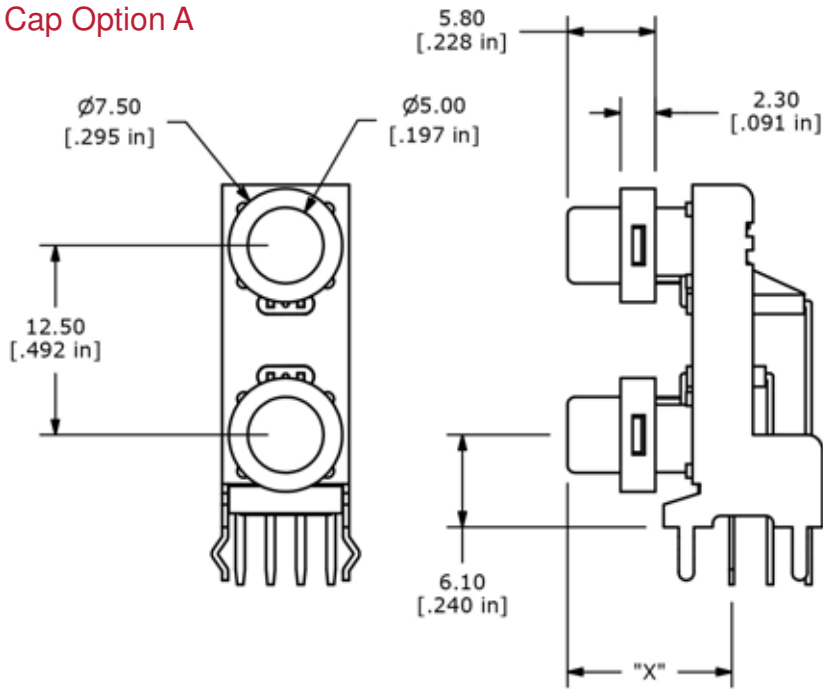


ANTI-VANDAL
DETECTOR
SWITCHES
DIP
SWITCHES
KEYLOCK
SWITCHES
NAVIGATION
SWITCHES
PUSHBUTTON
SWITCHES
ROCKER
SWITCHES
ROTARY
SWITCHES
SLIDE
SWITCHES
SNAP ACTION
SWITCHES
TACTILE
SWITCHES
TOGGLE
SWITCHES
CAP
OPTIONS

TL3253 SERIES TACT SWITCH

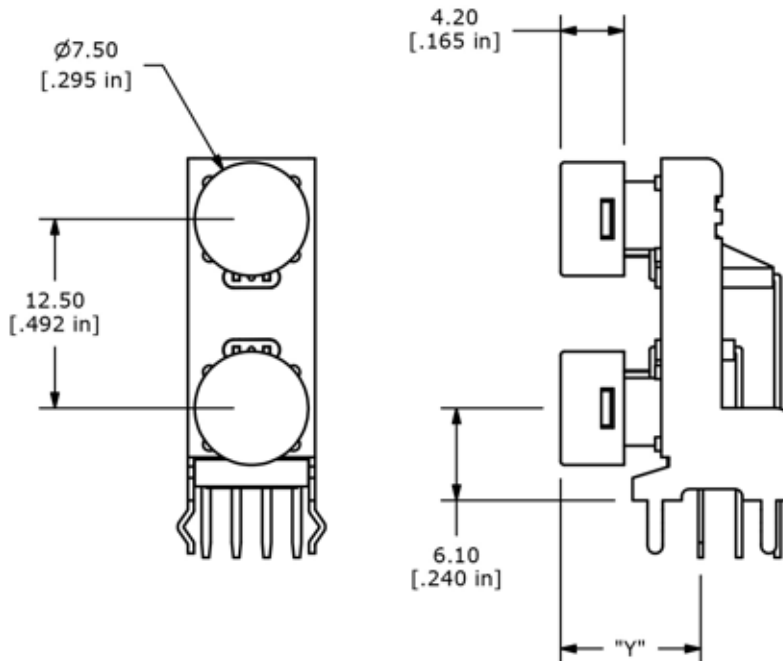
CAP OPTIONS

Cap Option A



ACTUATOR	"X" DIM
"A"	10.85mm
"B"	12.80mm

Cap Option B



ACTUATOR	"L" DIM
"A"	9.25mm
"B"	11.2mm

