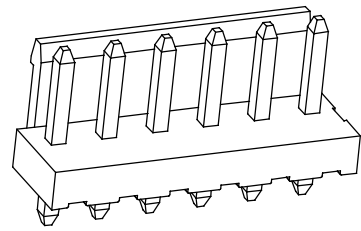
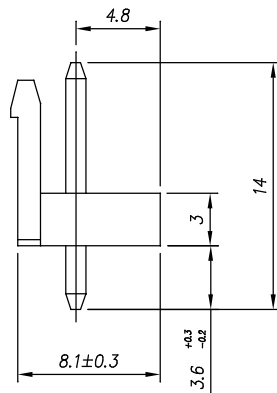
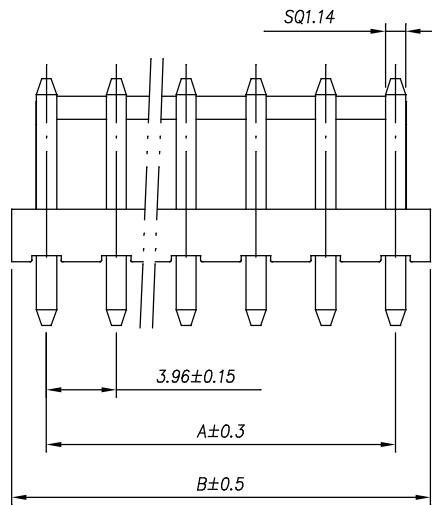


PCB LAYOUT



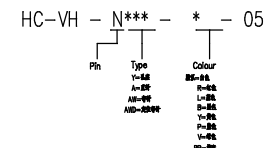
SPECIFICATIONS

1. Current Rating: 7A AC, DC
2. Voltage Rating: 250V AC, DC
3. Temperature Range: -25℃~ +85℃
4. Contact Resistance: 20mΩ Max
5. Insulation Resistance: 1000mΩ Min
6. Withstanding Voltage: 1500V AC/minute
7. Material: Wafer Nylon66 UL94-V0(2)  
PIN Brass Tin-plated



Circuit	Part NO.	Dimensions mm	
		A	B
2	HC-VH-2A2-BR-05	3.96	7.92
3	HC-VH-3A2-BR-05/ HC-VH-3A3-BR-05	7.92	11.88
4	HC-VH-4A4-BR-05	11.88	15.84
5	HC-VH-5A5-BR-05	15.84	19.80
6	HC-VH-6A6-BR-05	19.80	23.76
7	HC-VH-7A7-BR-05	23.76	27.72
8	HC-VH-8A8-BR-05	27.72	31.68
9	HC-VH-9A9-BR-05	31.68	35.64
10	HC-VH-10A10-BR-05	35.64	39.60
11	HC-VH-11A11-BR-05	39.60	43.56
12	HC-VH-12A12-BR-05	43.56	47.52
13	HC-VH-13A13-BR-05	47.52	51.48
14	HC-VH-14A14-BR-05	51.48	55.44
15	HC-VH-15A15-BR-05	55.44	59.40

Ordering Information



			GENERAL TOLERANCE	制图 DRAWING	深圳市华灿天禄电子有限公司 ShenzhenhuacantianluELECTRONICS CO.,LTD			
			DIM TOL	审核 CHECK				
			X.X ±0.30	批准 APPROVAL	产品名称 TITLE	VH (3.96) 直针	版本 REV.	A
			X.XX ±0.20	比例 SCALE	产品料号 PART NO.	HC-VH-NAN-BR-05	单位 UNITS	mm
			X.XXX ±0.10	投影 Projection	材料 MATERIAL		页次 SHEET	1/1
1	初版发行		Angle ±3.0°					
序号 No.	变更内容 MODIFY CONTENT	日期 MODIFY DATE						