

GT-TC029B-H040-L1 N

G-Switch

Operating Force

A=160gf
B=250gf
C=100gf
D=400gf

Detail

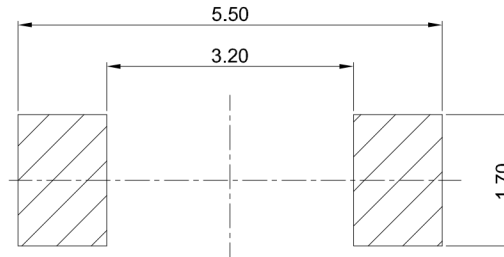
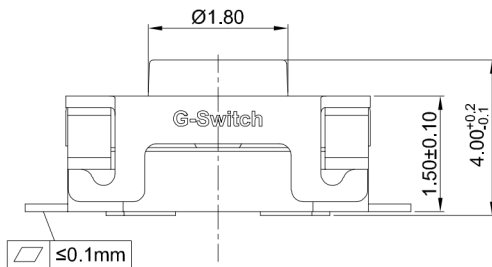
A=Base With Pilot
N=Non Pilot

Switch Height

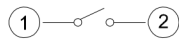
H020=2.0mm
H025=2.5mm
H030=3.0mm
H040=4.0mm

Switch Lifetime (Force)
L1=100,000 Cycles

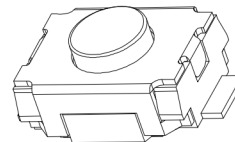
0.2±0.1mm
Travel



RECOMMENDED PCB LAYOUT
TOLERANCE:±0.05



CIRCUIT DIAGRAM



G-Switch Specification:

1. Operating temperature range: -40°C ~ +85°C
2. Rating: 50mA, 12V DC
3. Insulation resistance: 100MΩ min, 100V DC
4. Dielectric strength: 250V AC for 1 min
5. Contact resistance: 100mΩ max.
6. Travel: 0.20±0.10mm

| | | | |
|-----|-----------|--------------------------|------------|
| 6 | STEM | C2680 | |
| 5 | COVER | STAINLESS STEEL | |
| 4 | TAPE | POLYIMIDE | |
| 3 | CONTACT | STAINLESS STEEL | Ag PLATING |
| 2 | TERMINAL | COPPER ALLOY | Ag PLATING |
| 1 | CASE | HIGH TEMPERATURE PLASTIC | |
| NO. | PART NAME | MATERIAL | REMARK |



RoHS
Compliant
EU RoHS Standards



SCALE: 1:1 UNIT: mm
SIZE: A4

Unless otherwise
General Tolerance:
X. ±0.40
X.x ±0.30
X.xx ±0.20
X* ±5°
X.x* ±3°

| | | | |
|--|---------|----------|------------|
| Title: Vertical Tact Switch SMT Flat Terminal 4.0×3.0×4.0mm | | | |
| Molde Code: GT-TC029B-H040-L1N | | | |
| DRAWN | CHECKED | APPROVED | DATE |
| Xia | Chen | Chen | 2023.02.01 |



REV: A0 SHEET: 1/1