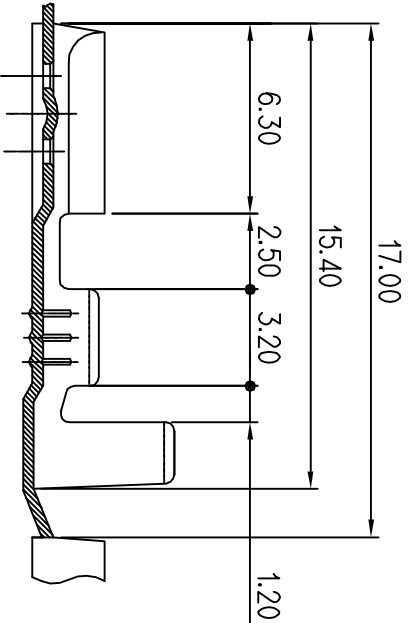
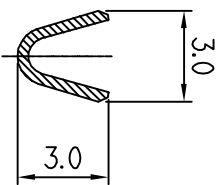
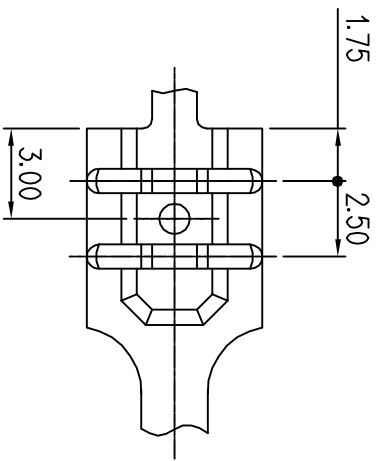
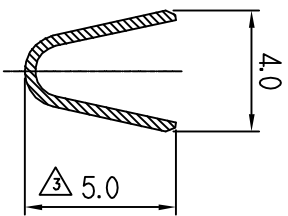


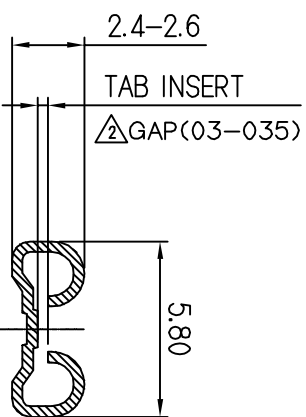
SECTION 'B'



SECTION 'C'



SECTION 'A'



| GENERAL TOLERANCE (TERMINAL) | | | | USED ON |
|------------------------------|-------|-------|-------|---------|
| 10MAX | 20MAX | 45MAX | ANGLE | ECCENT |
| ±0.2 | ±0.25 | ±0.3 | ±30' | 0.1 |

NOTE

- MUST BE FREE OF FLASH, SINK AND IMPERFECTION THAT AFFECT FUNCTION.
- HAZARDOUS SUBSTANCES IN PARTS (Lead, Mercury, Cadmium, Hexavalent Chromium, PBBs, PBDEs) SHALL NOT EXCEED THE MAXIMUM PERMISSIBLE CONCENTRATION PRESCRIBED UNDER EU ELV DIRECTIVE & RoHS REGULATION

주 기

- 기능상 유해한 흠, 변형 및 BURR 등이 없을 것
- 제품 내 함유된 6대 유해물질 (납, 수은, 카드뮴, 6가 크롬, PBBs, PBDEs)은 EU ELV 지침 및 RoHS 법규에서 지정한 최대 허용농도를 초과해서는 안 된다.

| No | THICK | FINISH | TAB |
|----|-------|---------|------|
| 1 | BRASS | UNPLATE | 0.5t |
| 2 | 0.35t | UNPLATE | 0.8t |
| 3 | | TIN | |
| 4 | | UNPLATE | |
| 5 | | TIN | |
| 6 | | NI | |

| 구분 | PART NO.(LINE) | MARKING |
|----|----------------|---------|
| 1 | ST730245-2 | KET2 |
| | ST730245-5 | KETN |

ISSUE MARK

| | | | | | |
|-------------------------|--------------------|----------|------------|---------------------------|---|
| ECO-1112-0629가 도면 수정 | CM | KSH | 11.12.13 | MATERIAL | SEE TABLE |
| 설계시정경(S110128)노기 도면 제작성 | KSU | 11.04.27 | FINISH | SEE TABLE | KEEJ KOREA ELECTRIC [ENGINEERED] TERMINAL CO., LTD. |
| 설계시정경(S070228)노기 도면 제작성 | PM | 07.10.16 | WIRE RANGE | AWG 20-16 | |
| 설계시정경(S040118)노기 도면 수정 | JIN | 04.09.03 | INSULATION | | TYPE STRIP |
| 작성인 변경 수정 | DR. | CHK. | DATE | TOLERANCE EXCEPT AS NOTED | SCALE 4/1 |
| REVISION RECORD | DR. | CHK. | DATE | SEE TABLE | PART NO. ST730245 |
| DR. <i>Shoq</i> | CHK. | | | PART NAME | .187 SLIP-ON REC |
| CHK. <i>S. W. Kee</i> | APP. <i>W. Kee</i> | | | | |