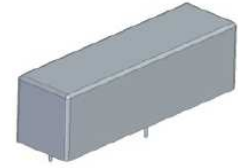


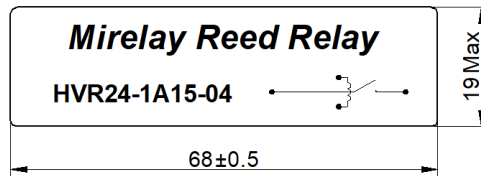
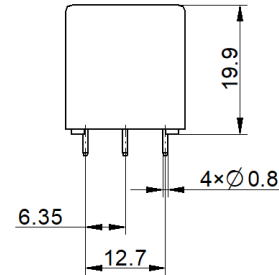
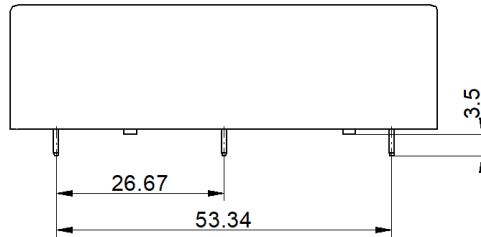
# HVR24-1A15-04

- High Voltage Reed Relay
- Low Contact Resistance
- Breakdown up to 15KV
- Excellent Lifetime Characteristics
- Custom Design Available



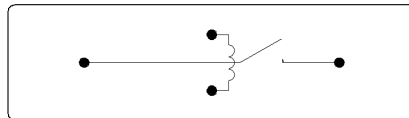
## [Outline Dimension]

Unit: mm Scale: 1/1



## [Pin Layout]

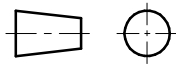
### [Top View]



## Order Information

HVR24-1A15-04

| Coil Parameters          |                | Relay Parameters                     |                  |
|--------------------------|----------------|--------------------------------------|------------------|
| 1 Nominal coil voltage   | 24 VDC         | 1 Min Breakdown Voltage              | 15K VDC          |
| 2 Max Operating voltage  | 29 VDC         | 2 Dielectric Strength coil/contact   | 15K VDC          |
| 3 Max Pull-in voltage    | 18 VDC         | 3 Insulation Resistance coil/contact | 1.00E+12ohm      |
| 4 Min Drop-out voltage   | 2 VDC          | 4 Operate Time, incl. Bounce         | 3.0ms            |
| 5 Coil Resistance        | 600 ohm        | 5 Reset Time                         | 1.5ms            |
| Contact Parameters       |                | 6 Capacitance Across Contacts        | 0.8pF            |
| 1 Contact Form           | 1 Form A       | 7 Storage Temperature                | -35~+105°C       |
| 2 Max Contact Rating     | 50 W           | 8 Operating Temperature              | -20~+70°C        |
| 3 Max Switch Voltage     | 10KV ACpeak/DC | 9 Soldering Temperature              | 5 sec. max 260°C |
| 4 Max Switch Current     | 3.0 A          |                                      |                  |
| 5 Max Carrying Current   | 5.0 A          |                                      |                  |
| 6 Min Breakdown Voltage  | 15K VDC        |                                      |                  |
| 7 Max Contact Resistance | 150 mohm       |                                      |                  |

|             |             |                 |                         |   |
|-------------|-------------|-----------------|-------------------------|---|
| Version: 01 | Designed by |                 | TITLE                   |  |
|             | Checked by  |                 | High Voltage Reed Relay |   |
|             | Approved by |                 | P/N                     | Scale: 1:1  |
|             | Date        | 27th, Dec, 2021 | HVR24-1A15-04           | Page: 1/1   |