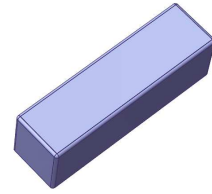


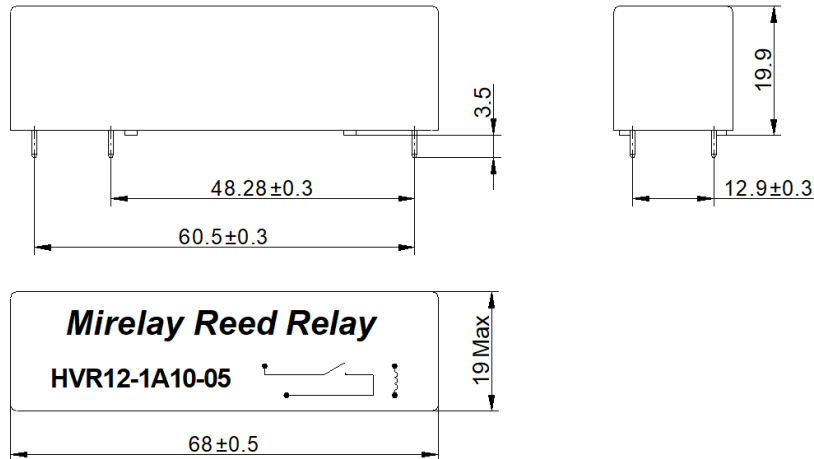
# HVR12-1A10-05

- High Voltage Reed Relay
- Low Contact Resistance
- Breakdown up to 10KV
- Excellent Lifetime Characteristics
- Custom Design Available



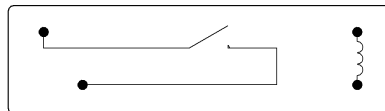
## [Outline Dimension]

Unit: mm Scale: 1/1



## [Pin Layout]

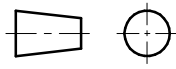
## [Top View]



## Order Information

**HVR12-1A10-05**

| Coil Parameters          |                 | Relay Parameters                     |                  |
|--------------------------|-----------------|--------------------------------------|------------------|
| 1 Nominal coil voltage   | 12 VDC          | 1 Min Breakdown Voltage              | 10K VDC          |
| 2 Max Operating voltage  | 16 VDC          | 2 Dielectric Strength coil/contact   | 15K VDC          |
| 3 Max Pull-in voltage    | 9 VDC           | 3 Insulation Resistance coil/contact | 1.00E+12ohm      |
| 4 Min Drop-out voltage   | 1 VDC           | 4 Operate Time, incl. Bounce         | 3.0ms            |
| 5 Coil Resistance        | 200 ohm         | 5 Reset Time                         | 1.5ms            |
| Contact Parameters       |                 | 6 Capacitance Across Contacts        | 0.8pF            |
| 1 Contact Form           | 1 Form A        | 7 Storage Temperature                | -35~+105°C       |
| 2 Max Contact Rating     | 50 W            | 8 Operating Temperature              | -20~+70°C        |
| 3 Max Switch Voltage     | 7.5KV ACpeak/DC | 9 Soldering Temperature              | 5 sec. max 260°C |
| 4 Max Switch Current     | 3.0 A           |                                      |                  |
| 5 Max Carrying Current   | 5.0 A           |                                      |                  |
| 6 Min Breakdown Voltage  | 10K VDC         |                                      |                  |
| 7 Max Contact Resistance | 150 mohm        |                                      |                  |

|             |             |                |                         |   |
|-------------|-------------|----------------|-------------------------|---|
| Version: 01 | Designed by |                | TITLE                   |  |
|             | Checked by  |                | High Voltage Reed Relay |   |
|             | Approved by |                | P/N                     | Scale: 1:1  |
|             | Date        | 5th, Jul, 2022 | HVR12-1A10-05           | Page: 1/1   |