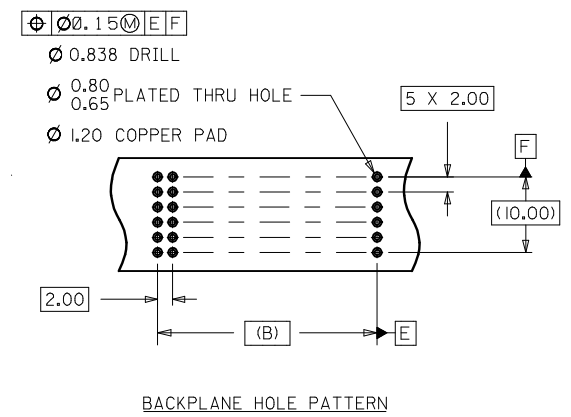
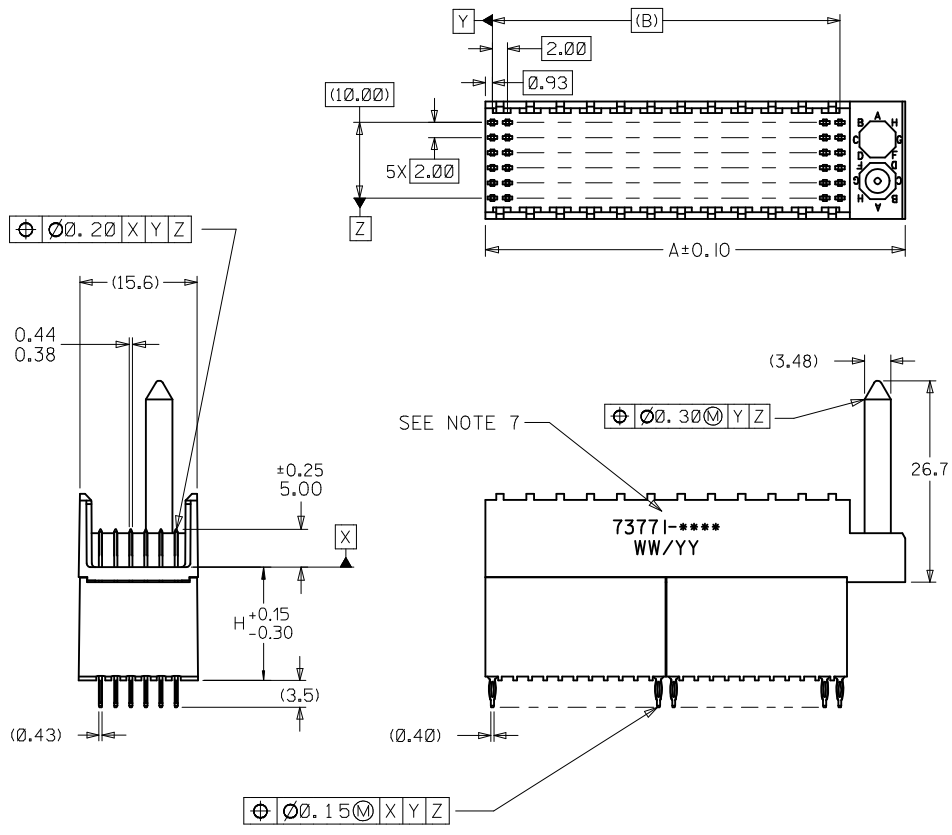
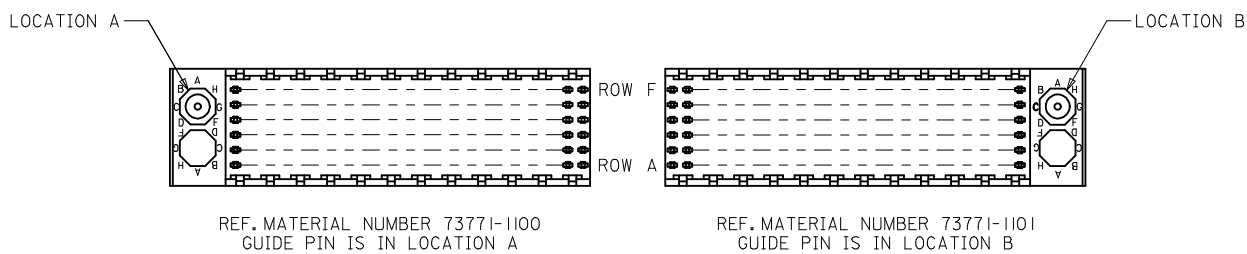


| ASSEMBLY P/N | TOTAL NUMBER OF SIGNAL CONTACTS | DIM "A" | DIM "B" | DIM "H" |
|--------------|---------------------------------|---------|---------|---------|
| 73771-01** | 72 | 31.6 | 22.00 | 15.05 |
| 73771-02** | 72 | 31.6 | 22.00 | 6.05 |
| 73771-03** | 72 | 31.6 | 22.00 | 10.05 |
| 73771-11** | 144 | 55.6 | 46.00 | 15.05 |
| 73771-12** | 144 | 55.6 | 46.00 | 6.05 |
| 73771-13** | 144 | 55.6 | 46.00 | 10.05 |

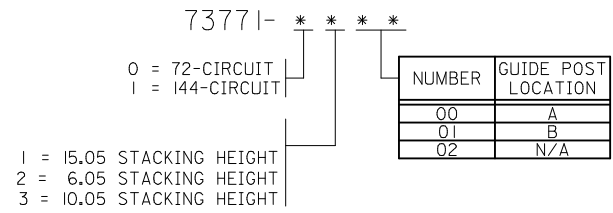


- NOTES:
1. MATERIALS: HOUSING-LIQUID CRYSTAL POLYMER (LCP), GLASS FILLED, UL 94V-0, COLOR: BLACK, TERMINAL-PHOSPHOR BRONZE
 2. FINISH: SELECTIVE GOLD (Au) IN CONTACT AREA, 0.00076 mm MINIMUM THICKNESS; SELECTIVE MATTE TIN (Sn) ON TAILS, NICKEL (Ni) OVERALL.
 3. THIS PART CONFORMS TO MOLEX PRODUCT SPECIFICATION PS-73780-999.
 4. THIS PART CONFORMS TO COSMETIC SPECIFICATION PS-45499-002 CLASS C.
 5. RECOMMENDED PCB THICKNESS: 2.50 MIN.
 6. PACKAGE PER PK-70873-0870, PK-70873-0871 OR PK-70873-0875.
 7. PART MARKED WITH PART NUMBER AND DATE CODE APPROXIMATELY WHERE SHOWN.

| REV | DESCRIPTION | QUALITY SYMBOLS | GENERAL TOLERANCES (UNLESS SPECIFIED) | | DIMENSION STYLE MM ONLY | SCALE 2:1 | DESIGN UNITS METRIC | THIRD ANGLE PROJECTION |
|-----|--|-------------------|--|-------|----------------------------|---|--|------------------------|
| | | | mm | INCH | | | | |
| H | LEAD FREE CONVERSION EC NO: UCP2013-3253 DRWNR:WHIPPLE 2013/02/04 CHKD:MMOLFE 2013/02/04 APPR:SMILLER 2013/08/05 | ▽=0 ▽=0 ▽=0 | 4 PLACES ± --- | ± --- | DRAWN BY JB INGHAM | DATE 1997/03/07 | SALES ASSEMBLY HDM BACKPLANE STACKING MOD CLOSED END OPT PRESSFIT molex DOCUMENT NO. SD-73771-001 SHEET NO. 1 OF 2 | |
| | | | 3 PLACES ± --- | ± --- | CHECKED BY | DATE | | |
| | | | 2 PLACES ± 0.05 | ± --- | SREED | 1997/03/07 | | |
| | | | 1 PLACE ± 0.10 | ± --- | APPROVED BY | DATE | | |
| | | | 0 PLACE ± --- | ± --- | CB IXLER | 1997/03/07 | | |
| | | | ANGULAR ±1/2° | | MATERIAL NO. | | | |
| | | | DRAFT WHERE APPLICABLE MUST REMAIN WITHIN DIMENSIONS | | SEE CHART | | | |
| | | | | | SIZE | THIS DRAWING CONTAINS INFORMATION THAT IS PROPRIETARY TO MOLEX INCORPORATED AND SHOULD NOT BE USED WITHOUT WRITTEN PERMISSION | | |



MATERIAL NUMBER ASSIGNMENT



| LEAD FREE CONVERSION EC NO: UCP2013-3253 DRWNR:WHIPPLE 2013/02/04 CHKD:HWOLFE 2013/02/04 APPR:SMILLER 2013/08/05 | QUALITY SYMBOLS ▽=0 ▽=0 ▽=0 | GENERAL TOLERANCES (UNLESS SPECIFIED) <table border="1"> <thead> <tr> <th></th> <th>mm</th> <th>INCH</th> </tr> </thead> <tbody> <tr> <td>4 PLACES</td> <td>± .---</td> <td>± .---</td> </tr> <tr> <td>3 PLACES</td> <td>± .---</td> <td>± .---</td> </tr> <tr> <td>2 PLACES</td> <td>± 0.05</td> <td>± .---</td> </tr> <tr> <td>1 PLACE</td> <td>± 0.10</td> <td>± .---</td> </tr> <tr> <td>0 PLACE</td> <td>± .---</td> <td>± .---</td> </tr> </tbody> </table> | | mm | INCH | 4 PLACES | ± .--- | ± .--- | 3 PLACES | ± .--- | ± .--- | 2 PLACES | ± 0.05 | ± .--- | 1 PLACE | ± 0.10 | ± .--- | 0 PLACE | ± .--- | ± .--- | DIMENSION STYLE MM ONLY DRAWN BY DATE JB INGHAM 1997/03/07 CHECKED BY DATE SREED 1997/03/07 APPROVED BY DATE CB IXLER 1997/03/07 | SCALE 1:1 DESIGN UNITS METRIC THIRD ANGLE PROJECTION | TITLE SALES ASSEMBLY HDM BACKPLANE STACKING MOD CLOSED END OPT PRESSFIT |
|---|--------------------------------------|--|--------|----|------|----------|--------|--------|----------|--------|--------|----------|--------|--------|---------|--------|--------|---------|--------|--------|--|--|---|
| | | mm | INCH | | | | | | | | | | | | | | | | | | | | |
| | 4 PLACES | ± .--- | ± .--- | | | | | | | | | | | | | | | | | | | | |
| | 3 PLACES | ± .--- | ± .--- | | | | | | | | | | | | | | | | | | | | |
| 2 PLACES | ± 0.05 | ± .--- | | | | | | | | | | | | | | | | | | | | | |
| 1 PLACE | ± 0.10 | ± .--- | | | | | | | | | | | | | | | | | | | | | |
| 0 PLACE | ± .--- | ± .--- | | | | | | | | | | | | | | | | | | | | | |
| MATERIAL NO. SEE TABLE | DOCUMENT NO. SD-73771-001 | SHEET NO. 2 OF 2 | | | | | | | | | | | | | | | | | | | | | |
| DRAFT WHERE APPLICABLE MUST REMAIN WITHIN DIMENSIONS | ANGULAR ±1/2° | SIZE THIS DRAWING CONTAINS INFORMATION THAT IS PROPRIETARY TO MOLEX INCORPORATED AND SHOULD NOT BE USED WITHOUT WRITTEN PERMISSION | | | | | | | | | | | | | | | | | | | | | |
| REV H | | | | | | | | | | | | | | | | | | | | | | | |