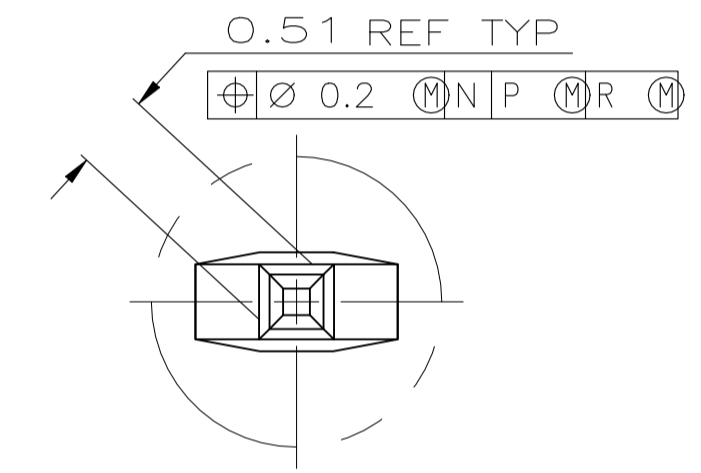
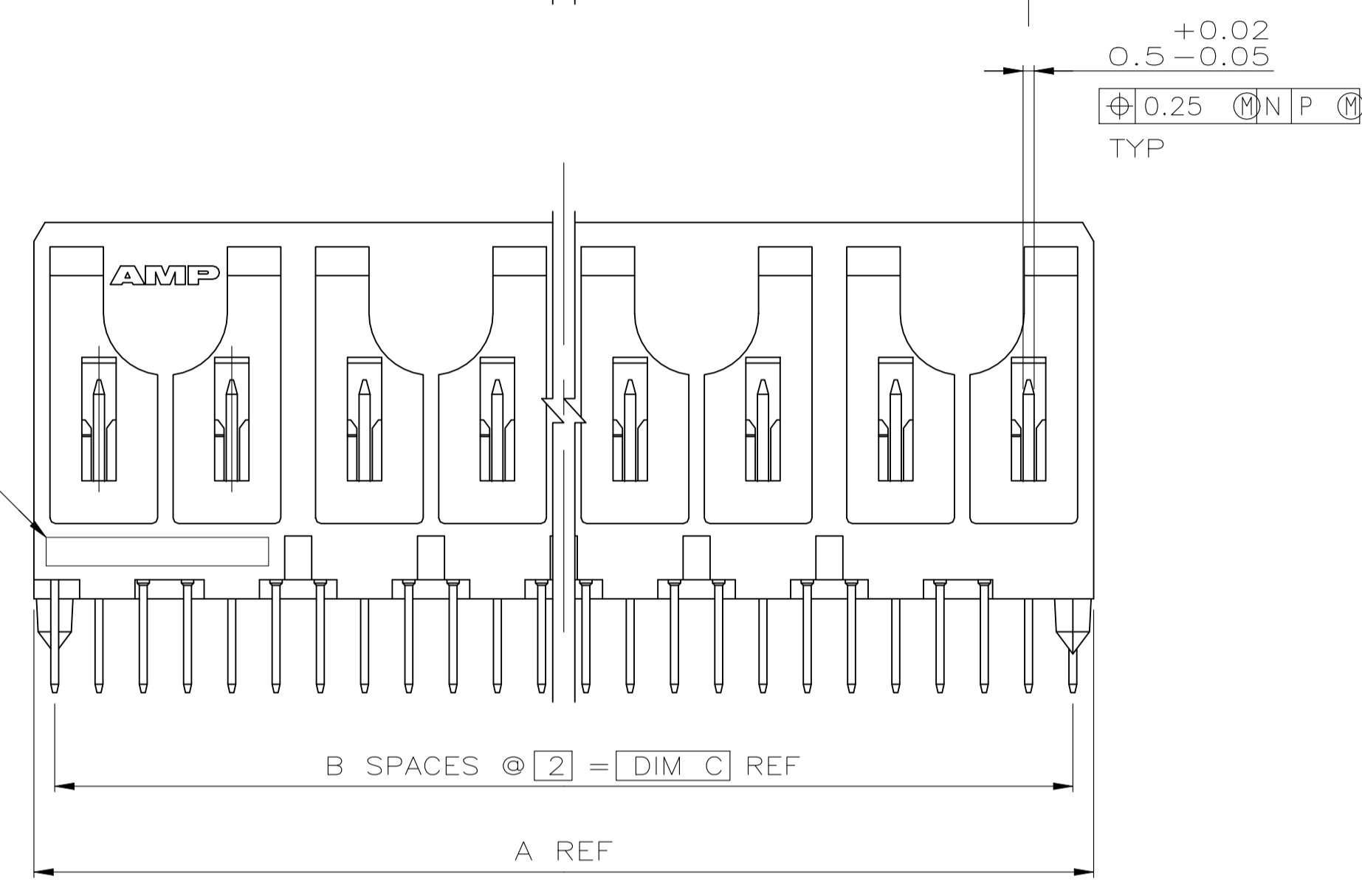
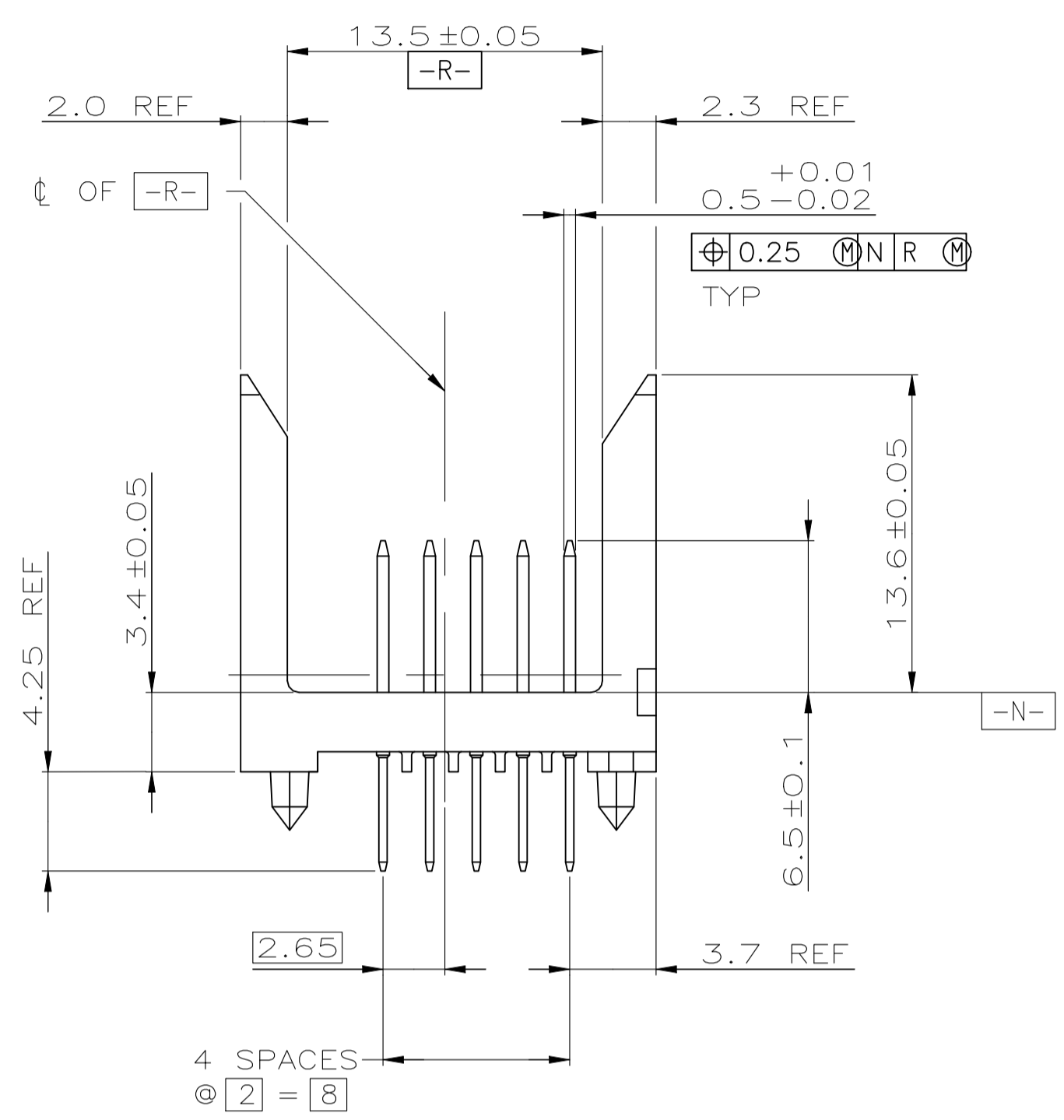
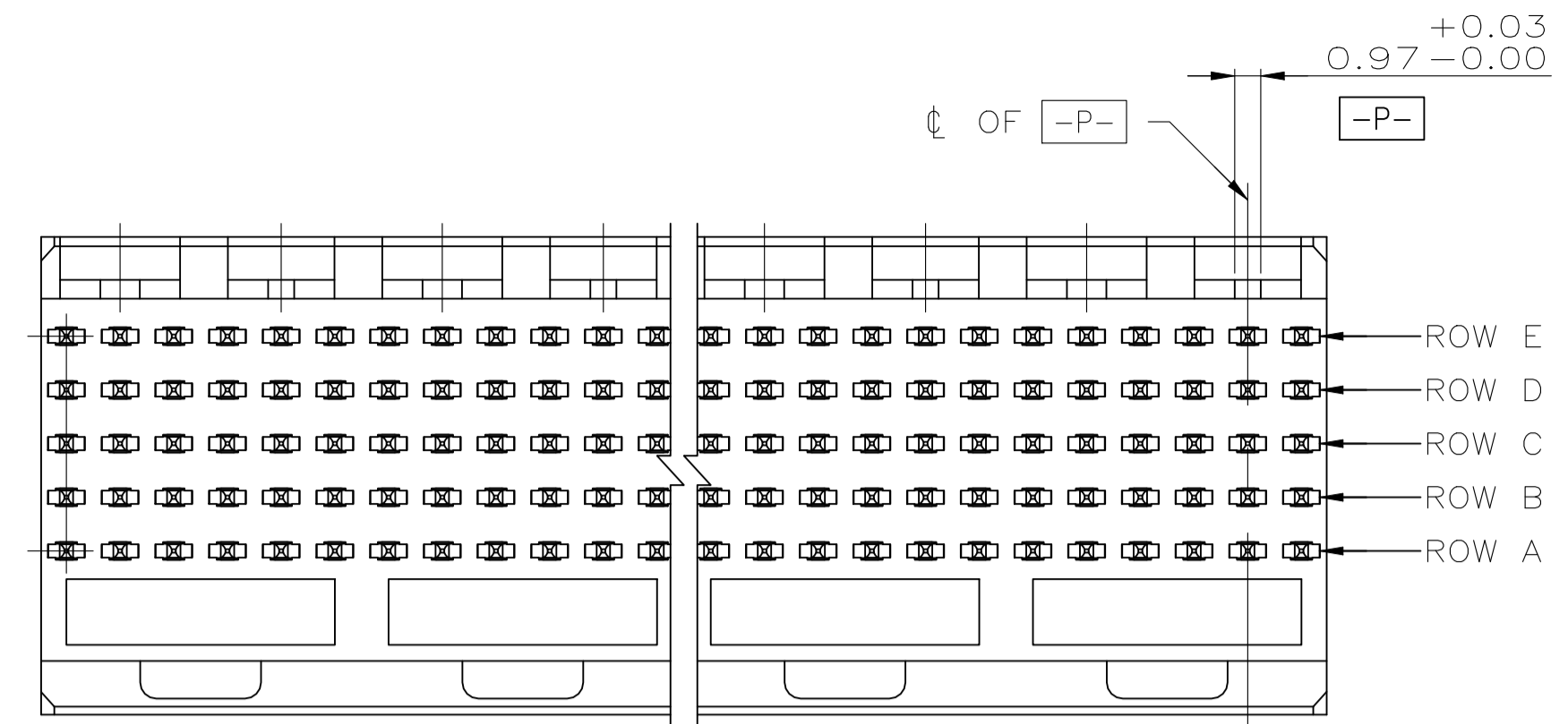
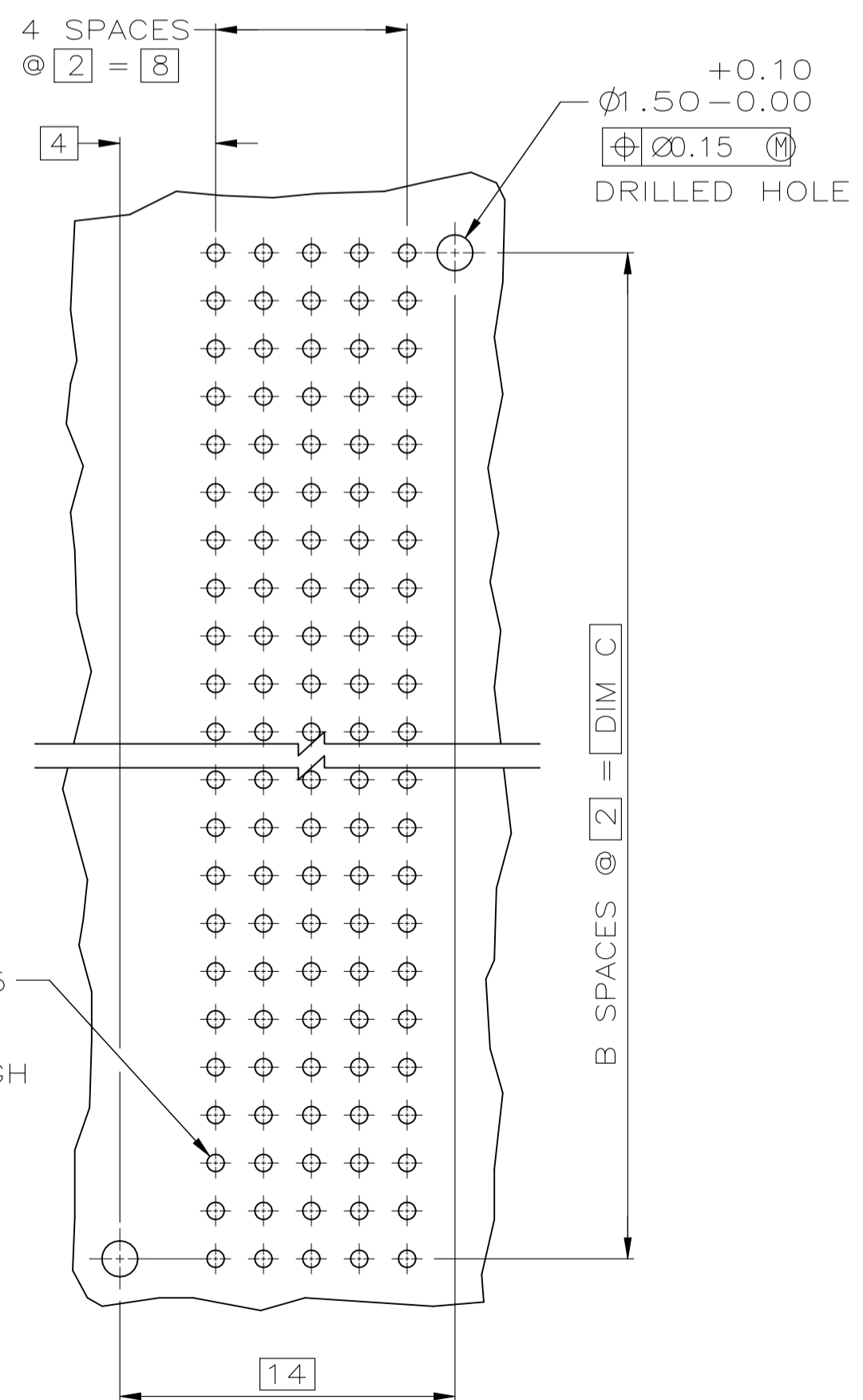


REVISIONS					
#	LTR	DESCRIPTION	DATE	DWN	APVD
K1		ECN-22-165236	19JUL2022	NV	HL

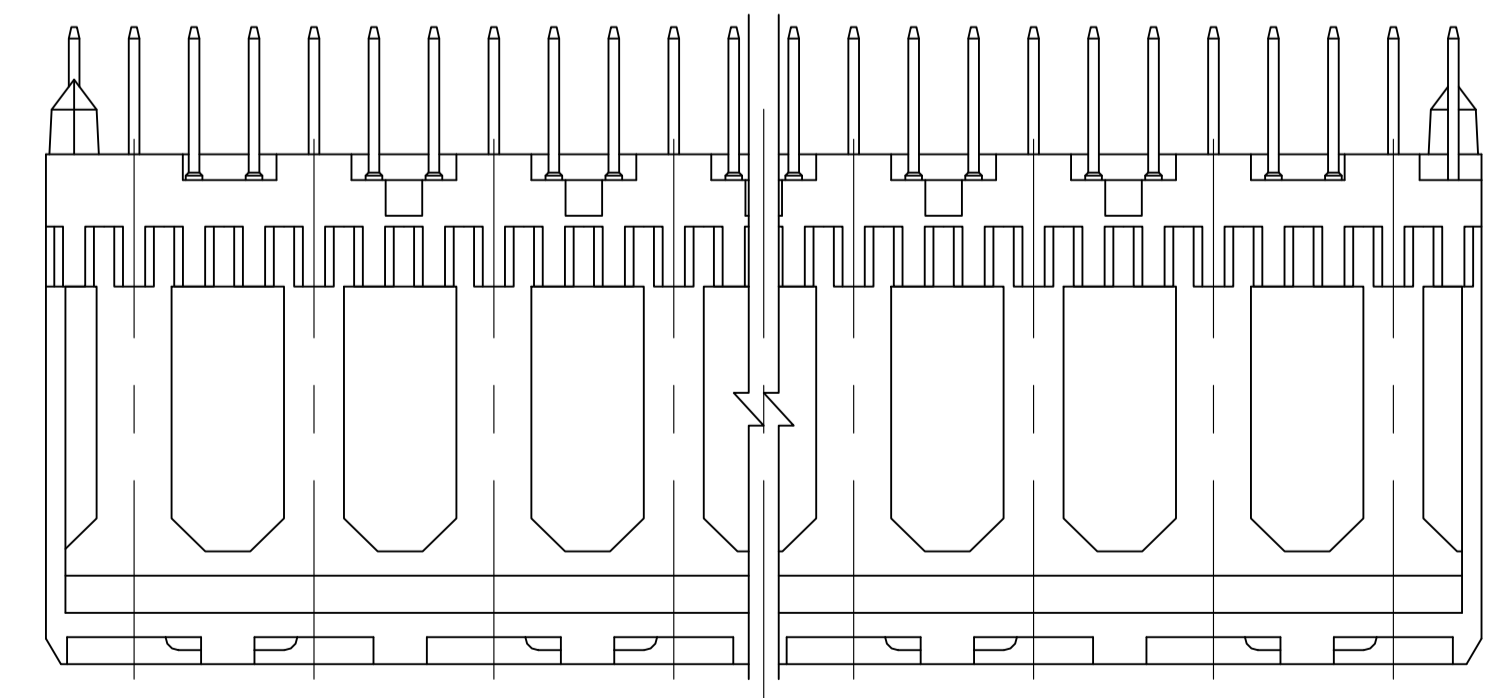
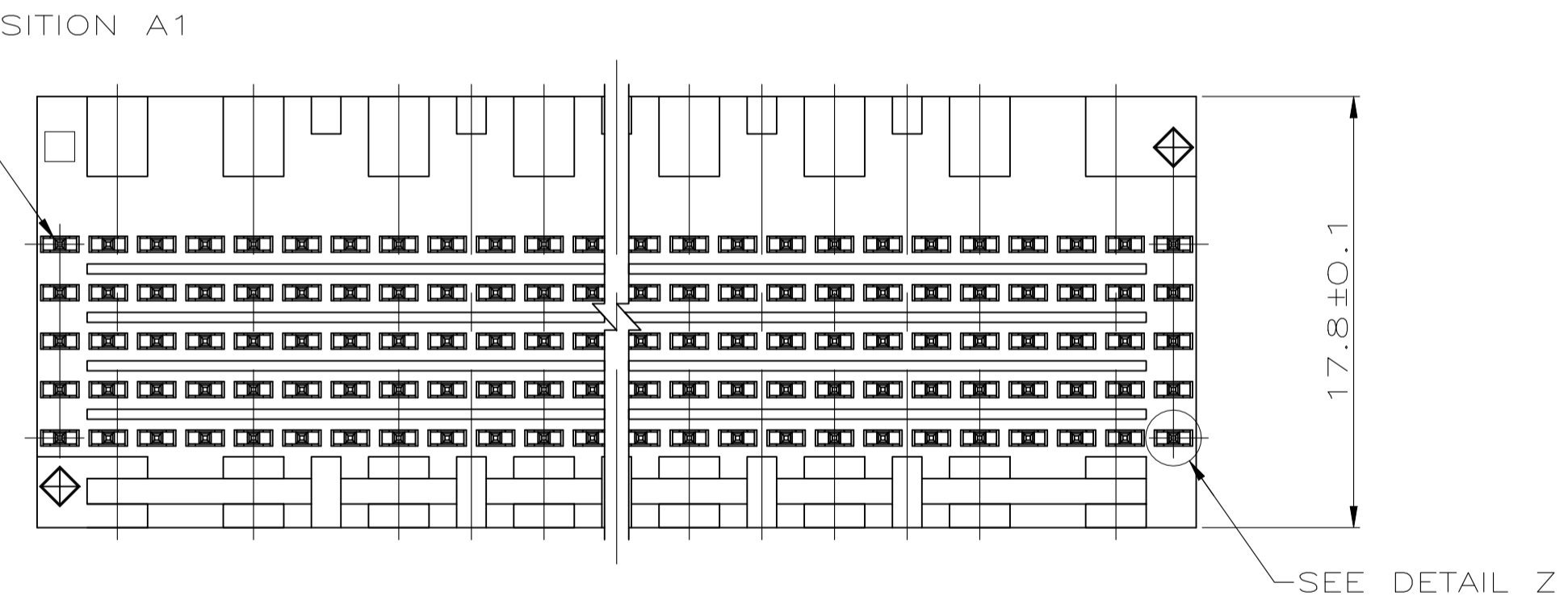
- ① HOUSING MATERIAL: LIQUID CRYSTAL POLYMER  
COLOR: NATURAL.
- ② CONTACT MATERIAL: PHOSPHOR BRONZE
- ③ CONTACT FINISH:  
UNDERPLATE (ENTIRE CONTACT):  
0.00127 MIN NICKEL.  
ON MATING SURFACES:  
CONFORMS TO ALL TESTING SPECIFIED FOR TELCORDIA UNCONTROLLED ENVIRONMENT.  
ON LEADS  
0.00381 MIN TIN-LEAD OVER UNDERPLATE.  
LUBRICATION (ENTIRE CONTACT):  
SURFACE CONDITIONER PER AMP SPEC 112-1002 AFTER PLATING.
- ④ PART MARKING LOCATED APPROXIMATELY AS SHOWN.
- ⑤ OBSOLETE PARTS: OBSOLETE CIS STREAMLINING PER D.RENAUD/D.SINISI



DETAIL Z  
SCALE 20:1



RECOMMENDED CIRCUIT PATTERN  
(COMPONENT SIDE)



⑤	OBSOLETE	130	65	131.88	③	330	4-223000-1
	OBSOLETE	118	59	119.88	③	300	1-223000-0
⑤	OBSOLETE	106	53	107.88	③	270	223000-9
⑤	SUPERSEDED BY 5223000-8	94	47	95.88	③	240	223000-8
⑤	OBSOLETE	82	41	83.88	③	210	223000-7
	SUPERSEDED	70	35	71.88	③	180	223000-6
		58	29	59.88	③	150	223000-5
	OBSOLETE	46	23	47.88	③	120	223000-4
①	OBSOLETE	34	17	35.88	③	90	223000-3
	OBSOLETE	22	11	23.88	③	60	223000-2
①	OBSOLETE	10	5	11.88	③	30	223000-1

	C	B	A	FINISH	NO OF SIGNAL POSN	PART NUMBER
THIS DRAWING IS A CONTROLLED DOCUMENT.						
DIMENSIONS: mm		TOLERANCES UNLESS OTHERWISE SPECIFIED:		DWN: R. BUCHHEISTER 10/JAN/96 CHK: D. BAECHTLE 11/JAN/96 APVD: D. SINISI 11/JAN/96		
0 PLC ± -		1 PLC ± -		NAME: ASSEMBLY, PIN, SIGNAL, VERTICAL, Z-PACK 2mm FB, 5 ROW, SOLDER LEAD		
2 PLC ± 0.13		3 PLC ± -		APPLICATION SPEC: -		
4 PLC ± -		ANGLES ± -		SIZE: A1 CAGE CODE: 00779 DRAWING NO: 00779		
MATERIAL: ① ②		FINISH: ③		WEIGHT: 0.000000		RESTRICTED TO: -
CUSTOMER DRAWING				SCALE: 4:1		SHEET 1 OF 1 REV K1