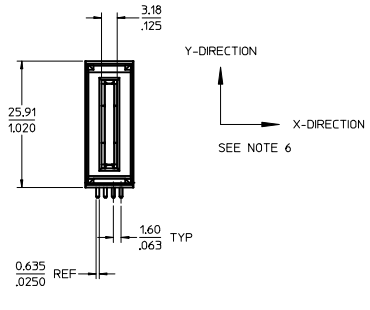
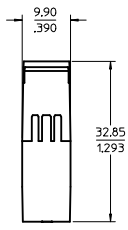
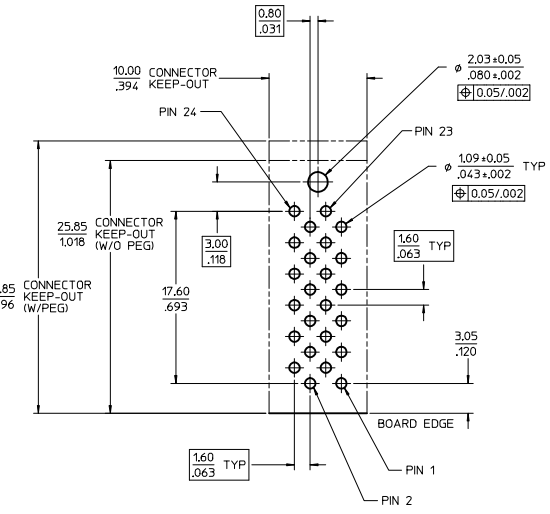
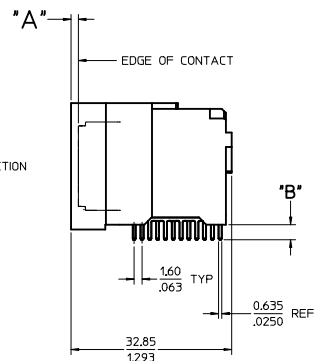


PART NUMBER	DIM 'A'	DIM 'B'	BLADE TYPE	PCB THICKNESS	PLATING	PEGS
75556-5000	0.00/.000	3.06/.120	LONG	2.39/.094	30μ INCH MIN SELECT HARD GOLD IN CONTACT AREA WITH 100μ INCH MIN SELECT TIN IN TAIL AREA OVER 50μ INCH MIN NICKEL OVERALL.	W/O PEGS
75556-5001	0.00/.000	3.81/.150	LONG	3.18/.125		
75556-5100	1.50/.059	3.06/.120	SHORT	2.39/.094		
75556-5101	1.50/.059	3.81/.150	SHORT	3.18/.125		
75556-1500	0.00/.000	3.06/.120	LONG	2.39/.094	30μ INCH MIN SELECT HARD GOLD IN CONTACT AREA WITH 100μ INCH MIN SELECT TIN IN TAIL AREA OVER 50μ INCH MIN NICKEL OVERALL.	W/PEGS
75556-1501	0.00/.000	3.81/.150	LONG	3.18/.125		
75556-1510	1.50/.059	3.06/.120	SHORT	2.39/.094		
75556-1511	1.50/.059	3.81/.150	SHORT	3.18/.125		

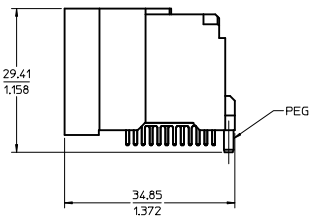


75556-5*** SHOWN (W/O PEG)



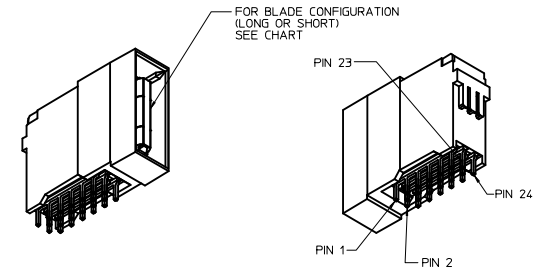
PCB LAYOUT SCALE: 4:1

RECOMMENDED MIN PCB THICKNESS : SEE TABLE

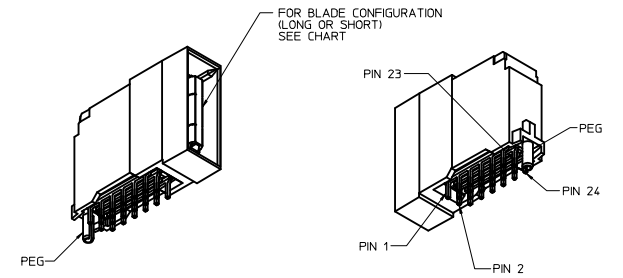


75556-15** SHOWN (W/PEG)

- NOTES:
- MATERIALS:
- HOUSING: 30% GLASS FILLED, LCP 94V-0, COLOR BLACK
- TERMINALS: COPPER ALLOY
- PLATING: PER ES-88 - SEE CHART
 - SEE CHART FOR REFERENCE DOCUMENTS
 - PLUG MATES WITH RECEPTACLE ASSEMBLIES: 75542-5000 & 75542-5001
 - MODULE IS DESIGNED FOR SOLDERING TO THE PCB
 - MODULE ASSEMBLY IS RoHS COMPLIANT
 - GATHERABILITY: ±0.65/.026 X-DIRECTION
±1.30/.051 Y-DIRECTION



75556-5100 SHOWN (W/O PEG)

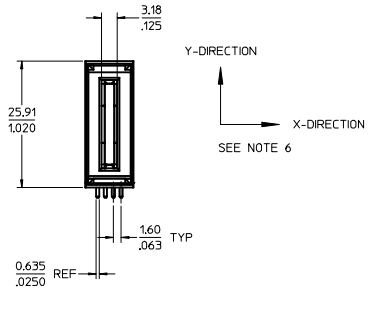
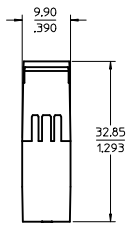


75556-1500 SHOWN (W/PEG)

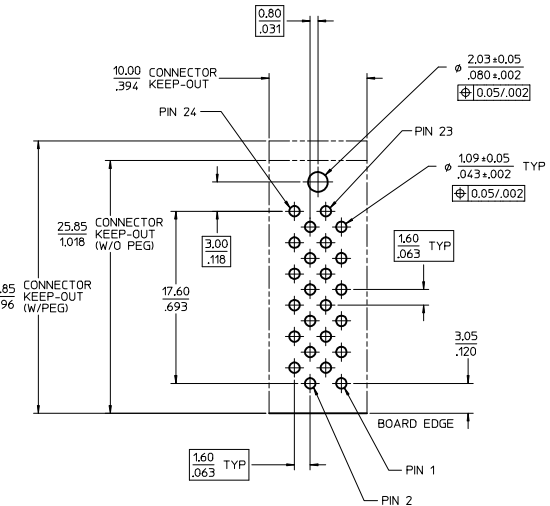
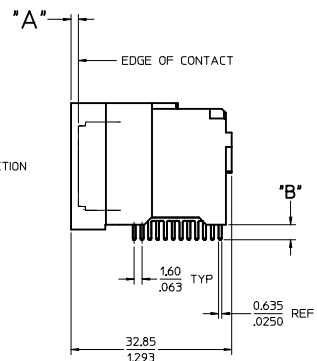
REFERENCE DOCUMENTS	
PS-75431-999	PRODUCT SPECIFICATION: PERFORMANCE AND RATINGS
SD-75555-***	FINAL ASSEMBLY CONFIGURATION DRAWING

REV	DESCRIPTION	QUALITY SYMBOLS		GENERAL TOLERANCES (UNLESS SPECIFIED)		DIMENSION STYLE		SCALE	DESIGN UNITS	THIRD ANGLE PROJECTION
		mm	INCH	mm	INCH	MM/IN	DATE	TITLE		
▽=0	4 PLACES	±---	±---	±---	±---	DRAWN BY	DATE	EXTREME POWERMASS 150 AMP MODULE, PLUG		
▽=0	3 PLACES	±---	±.008	CHECKED BY	DATE	MATERIAL NO. SEE CHART	2005/04/19			
▽=0	2 PLACES	±0.20	±.013	APPROVED BY	DATE				MOLEX INCORPORATED	
		1 PLACE	±0.33			DOCUMENT NO.		SD-75556-100		
			ANGULAR	±1/2°		SHEET NO.		1 OF 1		
			DRAFT WHERE APPLICABLE MUST REMAIN WITHIN DIMENSIONS			THIS DRAWING CONTAINS INFORMATION THAT IS PROPRIETARY TO MOLEX INCORPORATED AND SHOULD NOT BE USED WITHOUT WRITTEN PERMISSION				

PART NUMBER	DIM 'A'	DIM 'B'	BLADE TYPE	PCB THICKNESS	PLATING	PEGS
75556-5000	0.00/.000	3.06/.120	LONG	2.39/.094	30μ INCH MIN SELECT HARD GOLD IN CONTACT AREA WITH 100μ INCH MIN SELECT TIN IN TAIL AREA OVER 50μ INCH MIN NICKEL OVERALL.	W/O PEGS
75556-5001	0.00/.000	3.81/.150	LONG	3.18/.125		
75556-5100	1.50/.059	3.06/.120	SHORT	2.39/.094		
75556-5101	1.50/.059	3.81/.150	SHORT	3.18/.125		
75556-1500	0.00/.000	3.06/.120	LONG	2.39/.094	30μ INCH MIN SELECT HARD GOLD IN CONTACT AREA WITH 100μ INCH MIN SELECT TIN IN TAIL AREA OVER 50μ INCH MIN NICKEL OVERALL.	W/PEGS
75556-1501	0.00/.000	3.81/.150	LONG	3.18/.125		
75556-1510	1.50/.059	3.06/.120	SHORT	2.39/.094		
75556-1511	1.50/.059	3.81/.150	SHORT	3.18/.125		

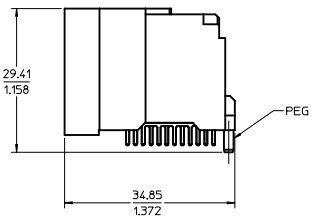


75556-5*** SHOWN (W/O PEG)



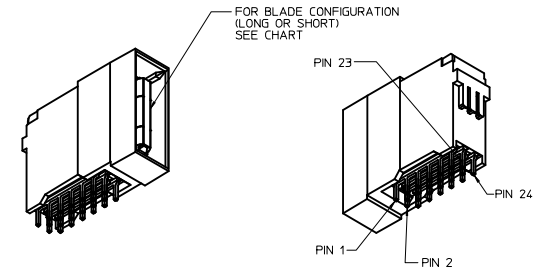
PCB LAYOUT SCALE: 4:1

RECOMMENDED MIN PCB THICKNESS : SEE TABLE

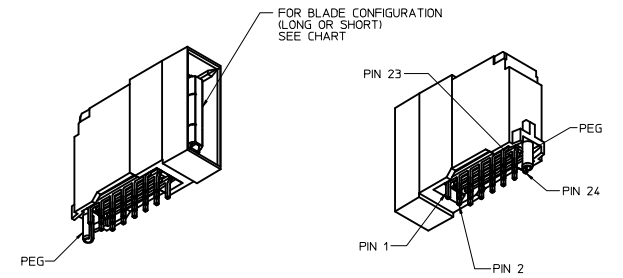


75556-15** SHOWN (W/PEG)

- NOTES:
- MATERIALS:
- HOUSING: 30% GLASS FILLED, LCP 94V-0, COLOR BLACK
- TERMINALS: COPPER ALLOY
- PLATING: PER ES-88 - SEE CHART
 - SEE CHART FOR REFERENCE DOCUMENTS
 - PLUG MATES WITH RECEPTACLE ASSEMBLIES: 75542-5000 & 75542-5001
 - MODULE IS DESIGNED FOR SOLDERING TO THE PCB
 - MODULE ASSEMBLY IS RoHS COMPLIANT
 - GATHERABILITY: ±0.65/.026 X-DIRECTION
±1.30/.051 Y-DIRECTION



75556-5100 SHOWN (W/O PEG)



75556-1500 SHOWN (W/PEG)

REFERENCE DOCUMENTS	
PS-75431-999	PRODUCT SPECIFICATION: PERFORMANCE AND RATINGS
SD-75555-***	FINAL ASSEMBLY CONFIGURATION DRAWING

REV	DESCRIPTION	QUALITY SYMBOLS		GENERAL TOLERANCES (UNLESS SPECIFIED)		DIMENSION STYLE		SCALE	DESIGN UNITS	THIRD ANGLE PROJECTION
		mm	INCH	mm	INCH	MM/IN	DATE	TITLE		
1	REVISION CHART	4 PLACES	±.008	±.008	±.008	MM/IN	DATE	EXTREME POWERMASS 150 AMP MODULE, PLUG		
2	2016/10/10	3 PLACES	±.015	±.015	±.015	MM/IN	DATE			
3	2016/11/14	2 PLACES	±0.20	±.015	±.015	MM/IN	DATE			
4	2016/11/15	1 PLACE	±0.33	±.015	±.015	MM/IN	DATE			
		ANGULAR		±1/2°						
		DRAFT WHERE APPLICABLE		MUST REMAIN WITHIN DIMENSIONS						
		MATERIAL NO.		SEE CHART		DOCUMENT NO.		SD-75556-100		
		DRAWN BY		ADRA/TNOL		DATE		2005/04/19		
		CHECKED BY		M/DATA		DATE		2005/04/19		
		APPROVED BY		A/PATEL		DATE		2005/04/19		
		DRAWING NO.		S2017-0197		DATE		2016/11/14		
		DRAWN BY		CHYOKEANG		DATE		2016/11/15		
		APPROVED BY		APR/KHL/IM		DATE		2016/11/15		