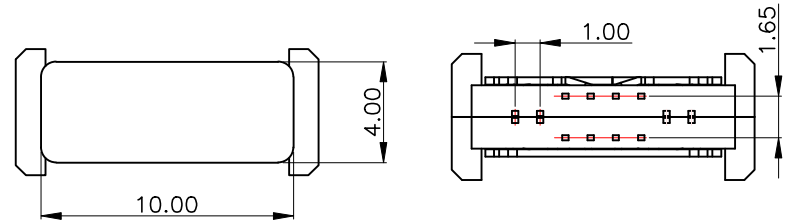
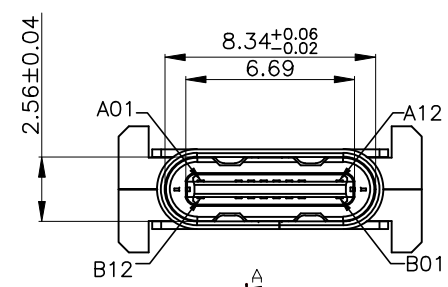


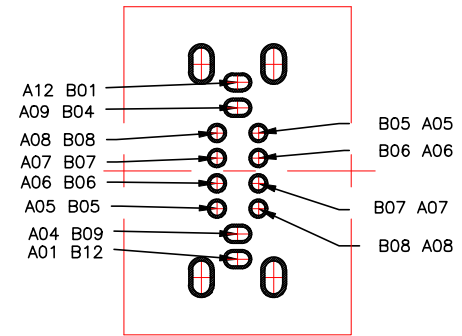
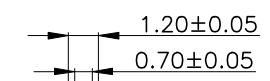
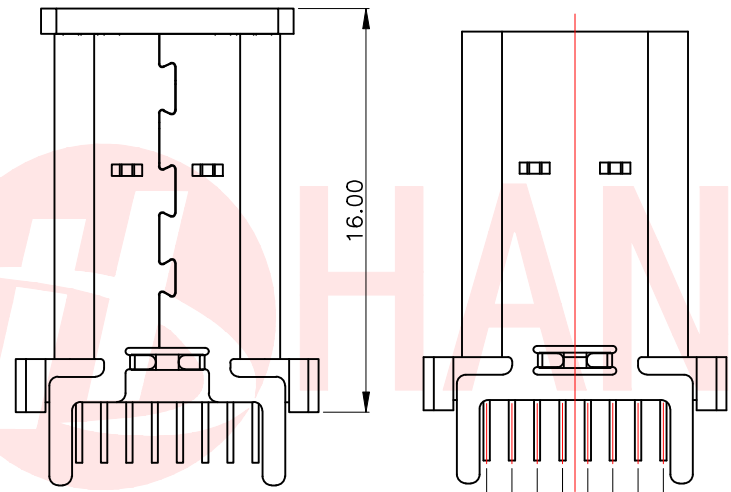
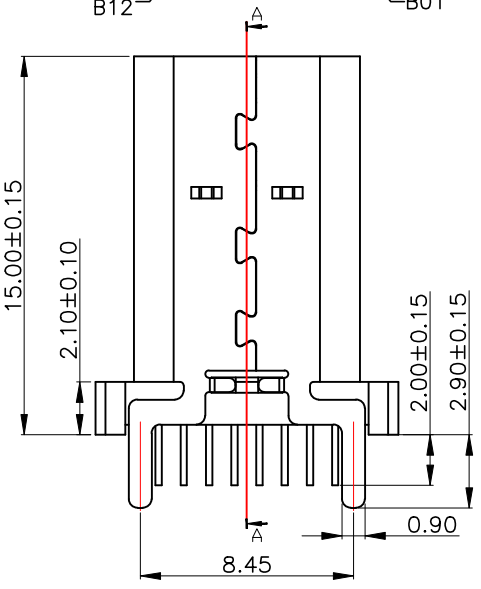


REV.	ECN NO OR DESCRIPTION	REVISED	DATE



**SPECIFICATIONS:**

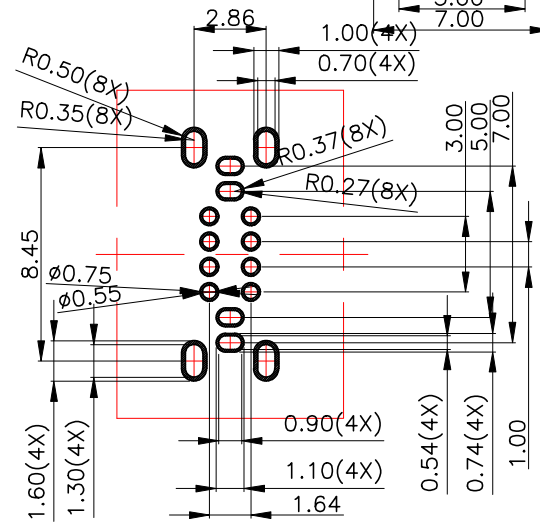
- ELECTRICAL CHARACTERISTICS:**
  - CONTACT RESISTANCE: 30mΩ MAX.
  - DIELECTRIC WITHSTANDING VOLTAGE: 100V AC FOR ONE MINUTE.
  - INSULATION RESISTANCE: 100MΩ MIN. MEASURED BY 500 VDC
- MECHANICAL CHARACTERISTICS:**
  - INSERTION FORCE :0.5-2.0Kgf(REF.)
  - WITHDRAWAL FORCE :0.8-2.0Kgf(REF.)
- LIFE TEST: 10,000 CYCLES.**
- TO CONFORM TO THE KRCONN HAZARDOUS SUBSTANCE FREE SPEC.**



**USB TYPE-C PIN ASSIGNMENTS**

PIN NUMBER	SIGNAL NAME	PIN NUMBER	SIGNAL NAME
A1	GND	B12	GND
A2		B11	
A3		B10	
A4	VBUS	B9	VBUS
A5	CC1	B8	SBU2
A6	Dp1	B7	Dn2
A7	Dn1	B6	Dp2
A8	SBU1	B5	CC2
A9	VBUS	B4	VBUS
A10		B3	
A11		B2	
A12	GND	B1	GND

**SECTION:A-A**



**RECOMMENDED P.C.B. LAYOUT(T:1.00mm)**  
**TOLERANCE UNSPECIFIED ±0.05mm**

6	SHELL	SUS304	NI Plated	1PCS
5	SHIELDING PLATE	SUS301	---	1PCS
4	MD	LCP	BLACK	1PCS
3	CONTACT	C2680	Au/Ni Plated	1SET
2	CONTACT	C2680	Au/Ni Plated	1SET
1	HOUSING	LCP	BLACK	1PCS
NO.	DESCRIPTION	MATERIAL	REMARKS	QTY

UNLESS OTHERWISE SPECIFIED TOLERANCES

DECIMALS: X :±0.30 X.X :±0.20 X.XX :±0.10

ANGLES: X :±2° X.X :±1°

**东莞市汉博电子科技有限公司**  
**DONGGUAN HANBO TECHNOLOGY CO., LTD**

TITLE: CF 16PIN DIP TYPEVERTICAL H15.0

DWN xiong PART NO. MC-110LDS-L150

CHKD lee SCALE:1:1 UNIT: mm

APVD wang SIZE: A4 SHEET:10F 1 REV: A4

CUSTOMER COPY