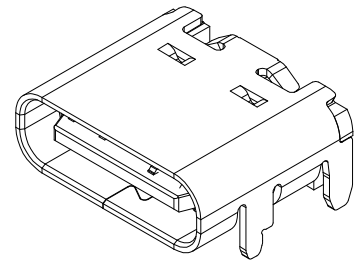
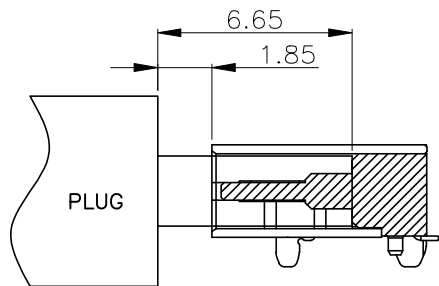
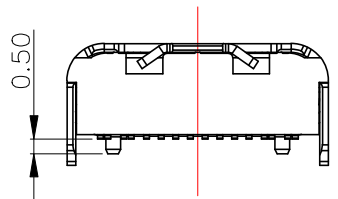
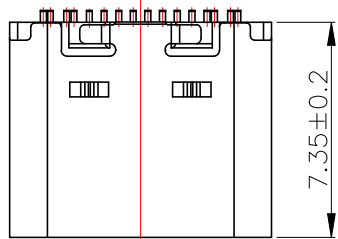




REV.	ECN NO OR DESCRIPTION	REVISED	DATE

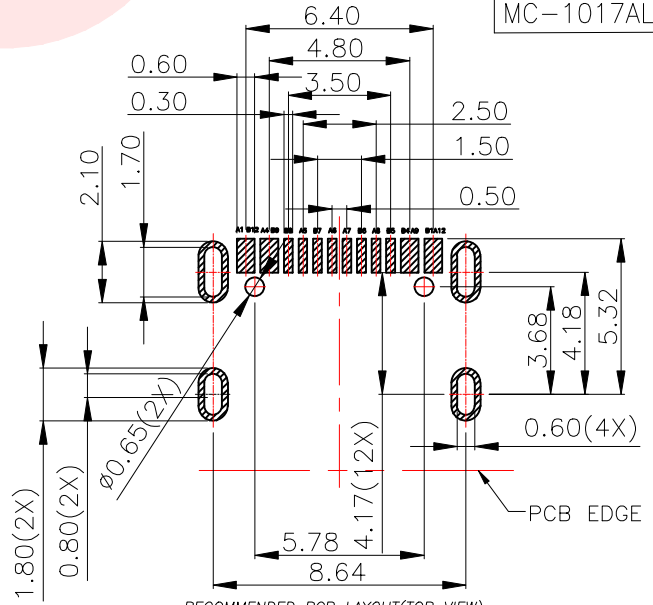
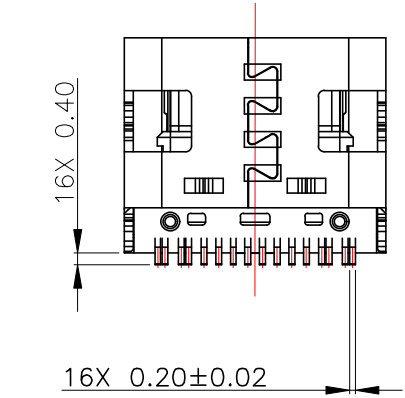
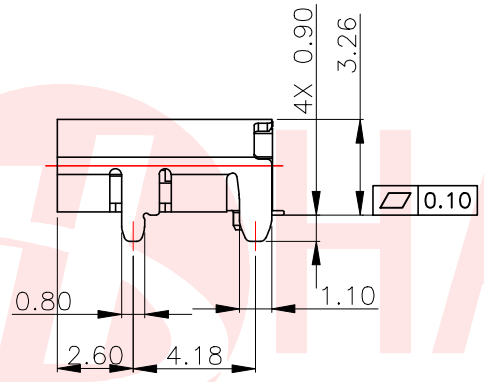
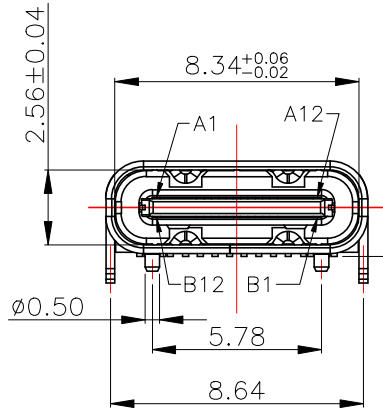


公母对插后尺寸

- 备注:
1. 材质及电镀: 见附表1
 2. 电气性能:
 - 2.1 接触电阻: 30mΩ Max FOR INITIAL, 40mΩ Max AFTER TEST.
 - 2.2 耐电压: 100V AC
 - 2.3 绝缘: 100MΩ Min
 - 2.4 额定电流: COLLECTIVELY VBUS PIN (A4,A9,B4,B9), TOTAL 5A
VCCON PIN (B5) THROUGH GND
PIN(A1,A12,B1,B12), 1.25A
OTHERS PIN, 0.25A
 - 2.5 工作温度: -40°C ~ 80°C.
 3. 机械性能:
 - 3.1 插入力: 5~20N.
 - 3.2 拔出力: 初始值8~20N 测试后6~20N
 - 3.3 寿命: 10,000 CYCLES

TABLE:

CSG PART NO.	颜色
MC-1017ABP16	白色
MC-1017ALP16	蓝色
MC-1017ACP16	橙色
MC-1017ALLP16	绿色



RECOMMENDED PCB LAYOUT(TOP VIEW)
THICKNESS 0.80MM;DEFAULT TOLERANCE:±0.05

07	外壳	不锈钢	1	SUS 304 1/2H,T0.30
06	二次Molding件	LCP	1	黑色 UL94 V-0
05	Molding件2	LCP	1	黑色 UL94 V-0
04	Molding件1	LCP	1	黑色 UL94 V-0
03	中夹片	SUS301-H T=0.15	1	不电镀
01	端子	C2680-H T=0.15	1set	功能接触区镀金, 焊脚镀金
序号	品名	材质	用量	备注

UNLESS OTHERWISE SPECIFIED TOLERANCES

DECIMALS: X :±0.30 X.X :±0.20 X.XX :±0.10

ANGLES: X :±2° X.X :±1°

东莞市汉博电子科技有限公司
DONGGUAN HANBO TECHNOLOGY CO., LTD

TITLE: TYPE C 16PIN单排7.35板上插件

DWN xiong PART NO. MC-1017A**P16

CHKD lee SCALE:1:1 UNIT: mm

APVD wang SIZE: A4 SHEET:10F 1 REV: A4

CUSTOMER COPY