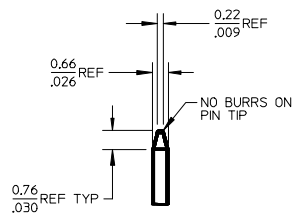
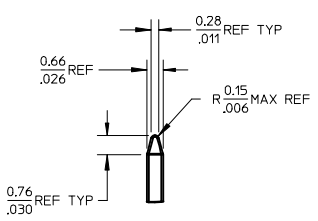


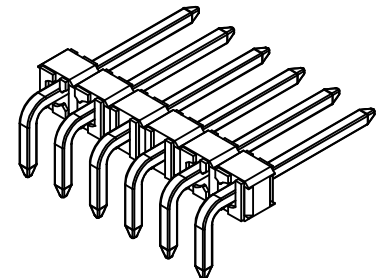
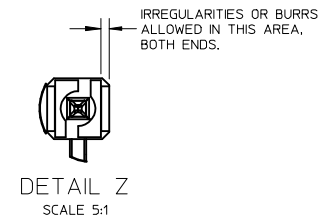
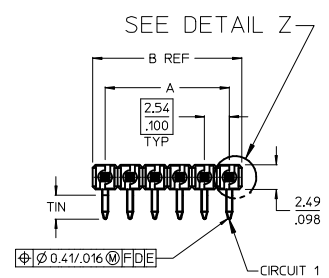
| NO. CKTS | DIM. A | DIM. B |
|----------|--------|--------|
| 2 | 2.54 | 5.08 |
| 3 | 1.00 | 2.00 |
| 3 | 5.08 | 7.62 |
| 3 | 2.00 | 3.00 |
| 4 | 7.62 | 10.16 |
| 4 | 3.00 | 4.00 |
| 5 | 10.16 | 12.70 |
| 5 | 4.00 | 5.00 |
| 6 | 12.70 | 15.24 |
| 6 | 5.00 | 6.00 |
| 7 | 15.24 | 17.78 |
| 7 | 6.00 | 7.00 |
| 8 | 17.78 | 20.32 |
| 8 | 7.00 | 8.00 |
| 9 | 20.32 | 22.86 |
| 10 | 22.86 | 25.40 |
| 10 | 8.00 | 9.00 |
| 11 | 25.40 | 27.94 |
| 11 | 1.000 | 1.100 |
| 12 | 27.94 | 30.48 |
| 12 | 1.100 | 1.200 |
| 13 | 30.48 | 33.02 |
| 13 | 1.200 | 1.300 |
| 14 | 33.02 | 35.56 |
| 14 | 1.300 | 1.400 |
| 15 | 35.56 | 38.10 |
| 15 | 1.400 | 1.500 |
| 16 | 38.10 | 40.64 |
| 16 | 1.500 | 1.600 |
| 17 | 40.64 | 43.18 |
| 17 | 1.600 | 1.700 |
| 18 | 43.18 | 45.72 |
| 18 | 1.700 | 1.800 |
| 19 | 45.72 | 48.26 |
| 19 | 1.800 | 1.900 |
| 20 | 48.26 | 50.80 |
| 20 | 1.900 | 2.000 |
| 21 | 50.80 | 53.34 |
| 21 | 2.000 | 2.100 |
| 22 | 53.34 | 55.88 |
| 22 | 2.100 | 2.200 |
| 23 | 55.88 | 58.42 |
| 23 | 2.200 | 2.300 |
| 24 | 58.42 | 60.96 |
| 24 | 2.300 | 2.400 |
| 25 | 60.96 | 63.50 |
| 25 | 2.400 | 2.500 |
| 26 | 63.50 | 66.04 |
| 26 | 2.500 | 2.600 |
| 27 | 66.04 | 68.58 |
| 27 | 2.600 | 2.700 |
| 28 | 68.58 | 71.12 |
| 28 | 2.700 | 2.800 |
| 29 | 71.12 | 73.66 |
| 29 | 2.800 | 2.900 |
| 30 | 73.66 | 76.20 |
| 30 | 2.900 | 3.000 |
| 31 | 76.20 | 78.74 |
| 31 | 3.000 | 3.100 |
| 32 | 78.74 | 81.28 |
| 32 | 3.100 | 3.200 |
| 33 | 81.28 | 83.82 |
| 33 | 3.200 | 3.300 |
| 34 | 83.82 | 86.36 |
| 34 | 3.300 | 3.400 |
| 35 | 86.36 | 88.90 |
| 35 | 3.400 | 3.500 |
| 36 | 88.90 | 91.44 |
| 36 | 3.500 | 3.600 |



DETAIL X
SCALE 5:1
SEE NOTE 10



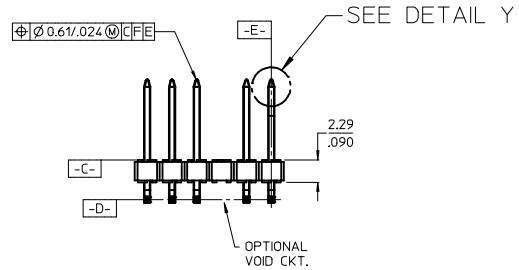
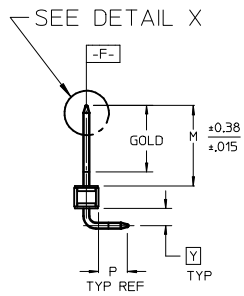
DETAIL Y
SCALE 5:1
SEE NOTE 10



- NOTES:
- MATERIAL: GLASS FILLED NYLON
UL, 94V-0, COLOR: BLACK
 - FINISH:
(154) OVERALL TIN: 0.00254/.000100 MIN. OVER
NICKEL: 0.00127/.000050 MIN.
(208) SELECT GOLD: 0.00038/.000015 MIN.
SELECT TIN: 0.00254/.000100 MIN.
OVERALL NICKEL UNDERPLATE: 0.00127/.000050 MIN.
(228) SELECT GOLD: 0.00076/.000030 MIN.
SELECT TIN: 0.00254/.000100 MIN.
OVERALL NICKEL UNDERPLATE: 0.00127/.000050 MIN.
 - PRODUCT SPECIFICATION: PS 10-07.
 - PACKAGING INFORMATION: SEE TABLES
 - SOLDERABILITY PER SMES-152.
 - PIN PUSH OUT FORCE: 3 LBS. MIN
 - KINK PIN OPTION NOT RECOMMENDED FOR 2 CIRCUIT PARTS.
HOLE SIZE MAY NEED TO BE ADJUSTED FOR 2 CIRCUIT PARTS
WITH KINK OPTION FOR PROPER INSERTION INTO THE PCB.
SEE SMES-42003 FOR ADDITIONAL INFORMATION
ON KINK PIN DIRECTION AND PLACEMENT.
 - HEADERS ARE NOT STACKABLE ON 2.54/.100 CENTERS.
 - THIS PART CONFORMS TO CLASS B REQUIREMENTS OF
COSMETIC SPECIFICATION PS-45499-002.
 - PIN TIP DIMENSIONS ARE SHOWN FOR REFERENCE ONLY.
DIMENSIONS APPLY PRIOR TO PLATING OR ASSEMBLY.



OPTIONAL KINK PIN
SEE NOTE 7



| | |
|-------|-----|
| 2-* | A1 |
| 1 | A4 |
| SHEET | REV |

| PIN TIP TOLERANCE EC NO: UCP2013-3063 DRAWN: KIPPER 2013/08/09 CHKD: BANDERSON 2013/08/09 APPR: FSMITH 2013/08/27 | QUALITY SYMBOLS $\nabla/\neq=0$ $\nabla/\neq=0$ $\nabla/\neq=0$ | GENERAL TOLERANCES (UNLESS SPECIFIED) <table border="1"> <tr><th></th><th>mm</th><th>INCH</th></tr> <tr><td>4 PLACES</td><td>± ---</td><td>± ---</td></tr> <tr><td>3 PLACES</td><td>± ---</td><td>± .010</td></tr> <tr><td>2 PLACES</td><td>± 0.25</td><td>± .015</td></tr> <tr><td>1 PLACE</td><td>± 0.38</td><td>± ---</td></tr> <tr><td>0 PLACE</td><td>±</td><td>±</td></tr> </table> | | mm | INCH | 4 PLACES | ± --- | ± --- | 3 PLACES | ± --- | ± .010 | 2 PLACES | ± 0.25 | ± .015 | 1 PLACE | ± 0.38 | ± --- | 0 PLACE | ± | ± | DIMENSION STYLE MM/IN | SCALE 2:1 | DESIGN UNITS INCH | THIRD ANGLE PROJECTION |
|--|--|--|--------|-------------------------------------|------|--|-------|-------|----------|-------|--------|----------|--------|--------|---------|--------|-------|---------|---|---|---------------------------------|---------------------|-----------------------------|------------------------|
| | | mm | INCH | | | | | | | | | | | | | | | | | | | | | |
| | 4 PLACES | ± --- | ± --- | | | | | | | | | | | | | | | | | | | | | |
| | 3 PLACES | ± --- | ± .010 | | | | | | | | | | | | | | | | | | | | | |
| 2 PLACES | ± 0.25 | ± .015 | | | | | | | | | | | | | | | | | | | | | | |
| 1 PLACE | ± 0.38 | ± --- | | | | | | | | | | | | | | | | | | | | | | |
| 0 PLACE | ± | ± | | | | | | | | | | | | | | | | | | | | | | |
| DRAWN BY SAMIEC | DATE 2004/07/20 | TITLE KK 100 HEADER ASSEMBLY FLAT RIGHT ANGLE BREAKAWAY, LEAD-FREE | | molex | | SHEET NO. 1 OF 2 | | | | | | | | | | | | | | | | | | |
| CHECKED BY SAMIEC | | DATE 2004/07/20 | | DOCUMENT NO. SD-42377-002 | | THIS DRAWING CONTAINS INFORMATION THAT IS PROPRIETARY TO MOLEX INCORPORATED AND SHOULD NOT BE USED WITHOUT WRITTEN PERMISSION | | | | | | | | | | | | | | | | | | |
| APPROVED BY MARGULIS | | DATE 2004/07/20 | | MATERIAL NO. SEE CHART | | ANGULAR ±1/2° DRAFT WHERE APPLICABLE MUST REMAIN WITHIN DIMENSIONS | | | | | | | | | | | | | | | | | | |

