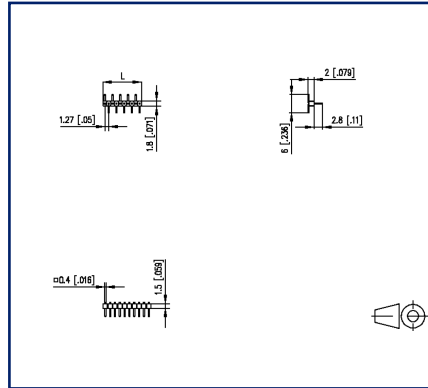


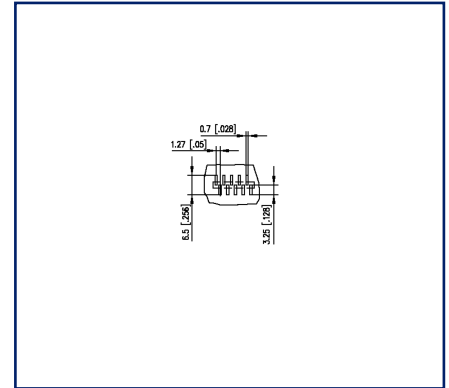
**Illustrations**



Dimensional drawing



PCB-Layout



See enlarged drawings at the end of document

**Product specification**

- pin header, SMT solderable
- centerline 1.27 mm, direction of connection vertical 0°
- color black
- Tape & Reel packaging possible
- single row

**Technical Data****General Data**

min. number of poles	2
max. number of poles	50
Protection category	IP00
Rated current	1 A

**Material**

insulating material	PE-HT
contact pin material	CuZn
contact pin surface	Ni + Au Flash
Glow-Wire Flammability GWFI	-
Glow-Wire Flammability GWIT	-

**Climatic Data**

upper limit temperature	105 °C
lower limit temperature	-40 °C

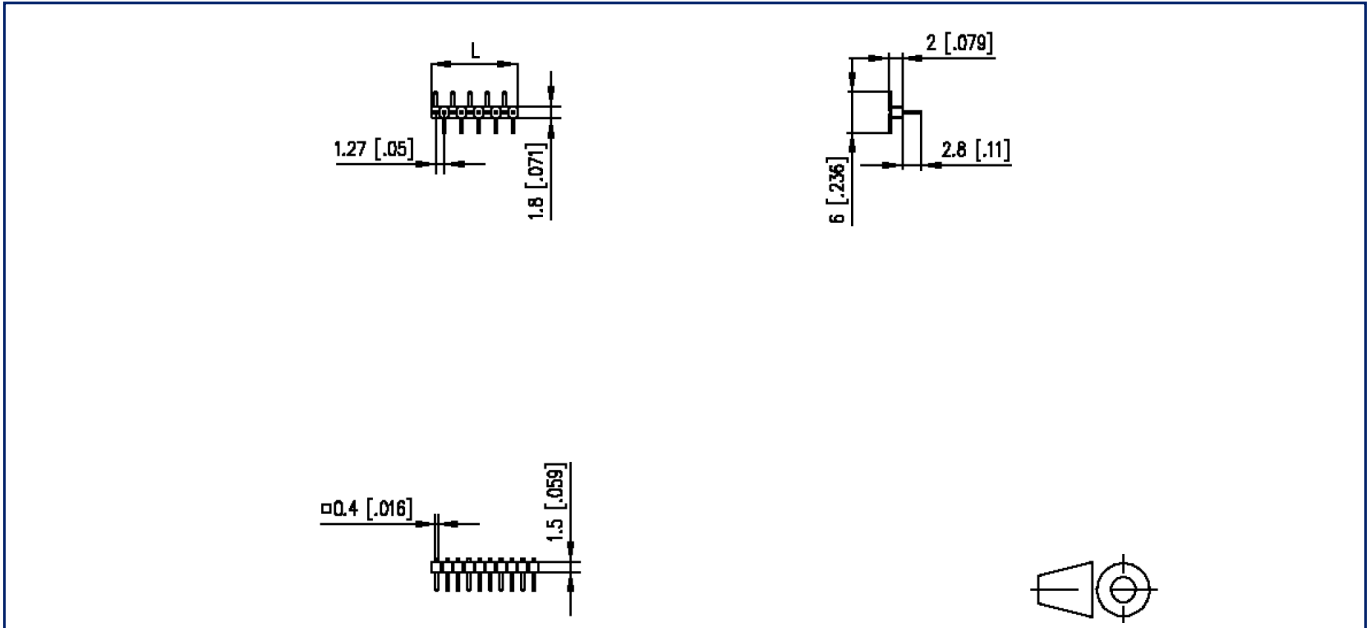
**general**

Tolerance	ISO 2768 -mH
Solderability	reflowable



## Illustrations

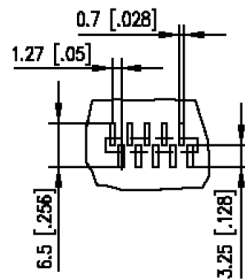
Dimensional drawing



$L = (\text{pole size} - 1) \times \text{centerline} + 1.27 \text{ mm } [0.05]$

**Illustrations**

PCB-Layout



# U | Contact

Data sheet  
**PM20BxxVBNN**

Page 5/5

P/N  
**PM20BXXVBNN**  
xx=number of poles  
2023/07/03  
Version: Y

## Illustrations