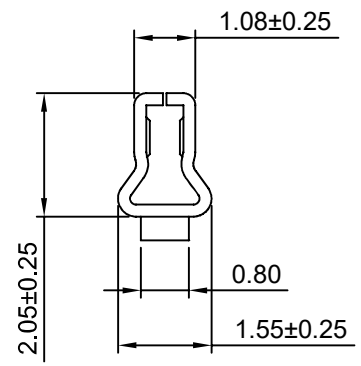
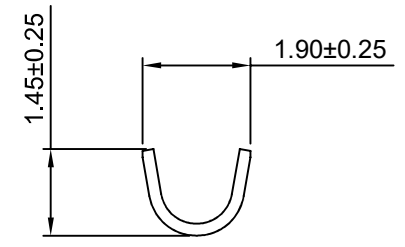
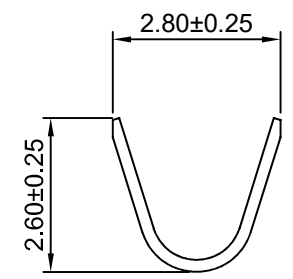
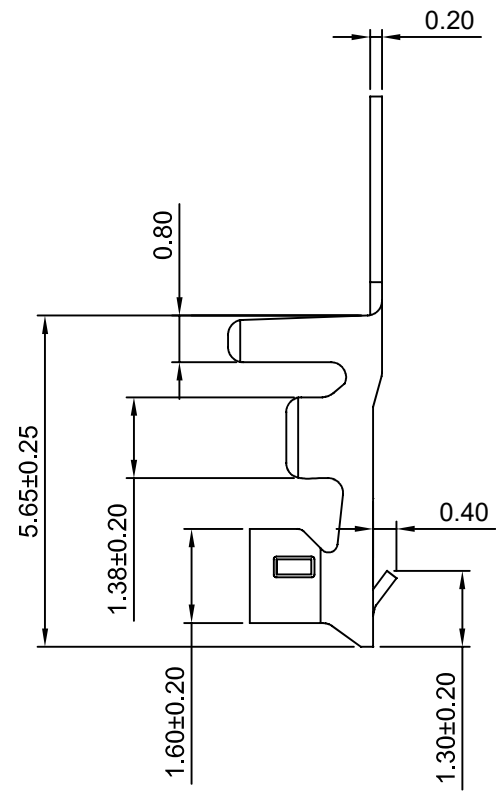
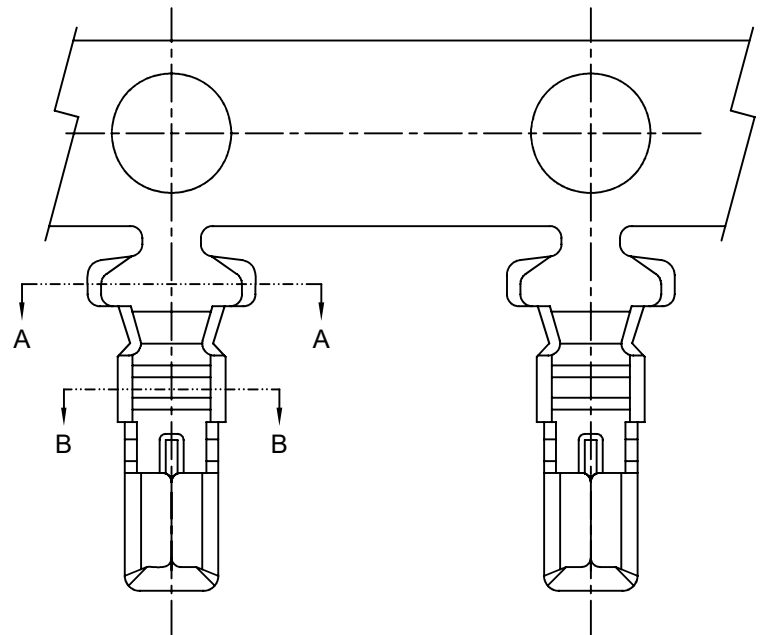


修订 REV	标记 MARK	修改摘要 REVISION DESCRIPTION	签名 SIGNATURE	日期 DATE
AO		NEW RELEASE	WANG	2016-05-10




Ordering information & Specifications


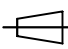
Unit:mm

Part No	Wire Range	Insultion O.D.	Material	Finish	Qty/reel
HDGC2502-TP	AWG#22-#30	1.90mm(max)	Phosphor Bronze	Tin over Nickel	10,000 PCS
HDGC2502-GP	AWG#22-#30	1.90mm(max)	Phosphor Bronze	Gold over Nickel	10,000 PCS

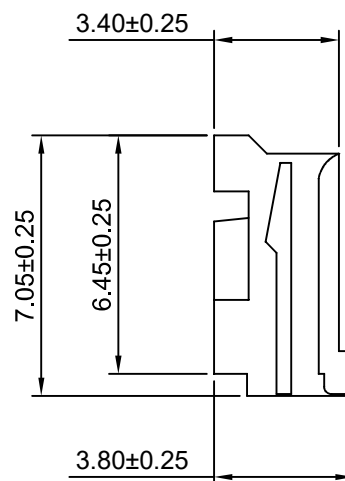
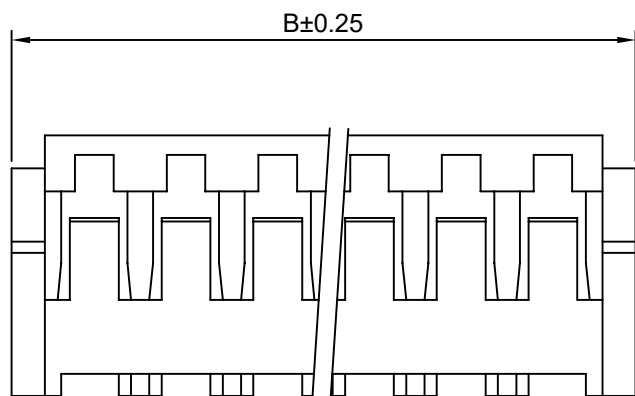
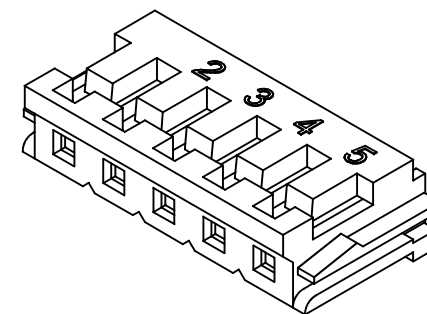
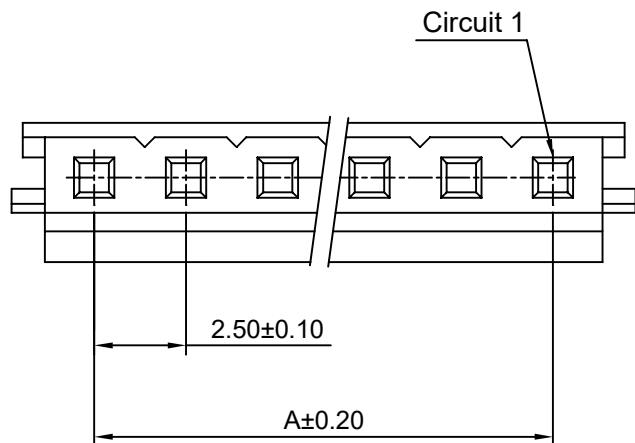
Optional Gold plating available but MOQ requested



**深圳市华德共创科技有限公司**  
 Shenzhen Huade co-create Technology Co.,LTD  
 TEL : 0755-27129737 FAX : 0755-29940187

-TOLERANCES- UNLESS OTHERWISE SPECIFIED 公差参数表			 	TITLE: 2.50mm Pitch 产品名称: Crimp Terminal							
X.X	±0.30	X.X°	±3°	APPD: 核准:	XIE			PART NO: 产品编号:	HDGC2502-T		
X.XX	±0.30	X.XX°	±2°	CHECK: 校对:	WANG			DATE	SCALE	UNIT	CODE NUMBER
X.XXX	±0.10	X.XXX°	±1°	DRAW: 绘图:	WANG			2016-05-10	8:1	mm	A008

修订 REV	标记 MARK	修改摘要 REVISION DESCRIPTION	签名 SIGNATURE	日期 DATE
A0		NEW RELEASE	WANG	2016-05-10



Ordering Information & Dimensions

Circuits	Dimensions(mm)		Circuits	Dimensions(mm)	
	A	B		A	B
2P	2.50	7.00	9P	20.00	24.50
3P	5.00	9.50	10P	22.50	27.00
4P	7.50	12.00	11P	25.00	29.50
5P	10.00	14.50	12P	27.50	32.00
6P	12.50	17.00	13P	30.00	34.50
7P	15.00	19.50	14P	32.50	37.00
8P	17.50	22.00	15P	35.00	39.50

**SPECIFICATIONS:**

Current Rating: 3A AC,DC  
Voltage Rating: 250V AC,DC  
Temperature Range: -25°C ~ +85°C  
Contact Resistance: 10mΩ Max  
Insulation Resistance: 1000MΩ Min  
Withstanding Voltage: 800V AC/minute  
Material: Nylon 66,UL94V-0(White)



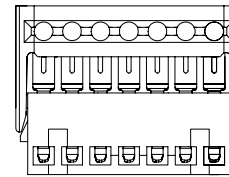
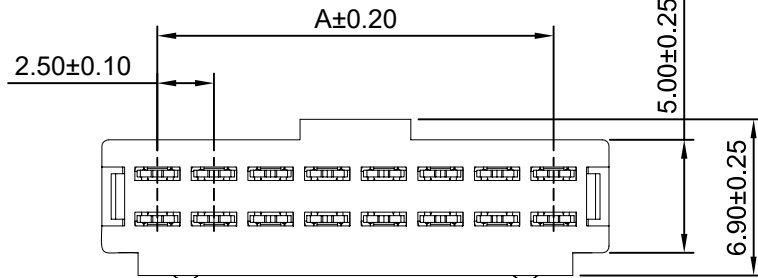
**深圳市华德共创科技有限公司**

Shenzhen Huade co-create Technology Co.,LTD

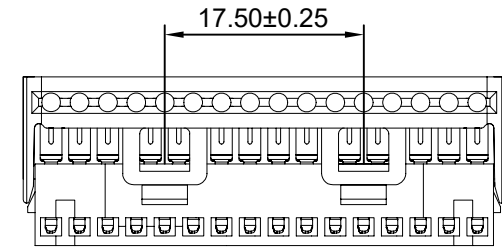
TEL : 0755-27129737 FAX : 0755-29940187

-TOLERANCES- UNLESS OTHERWISE SPECIFIED 公差参数表						TITLE: 产品名称: 2.50mm Pitch Housing			
X.X	±0.30	X.X°	±3°	APPD: 核准:	XIE	PART NO: 产品编号: HDGC2502H-XP			
X.XX	±0.30	X.XX°	±2°	CHECK: 校对:	WANG	DATE	SCALE	UNIT	CODE NUMBER
X.XXX	±0.10	X.XXX°	±1°	DRAW: 绘图:	WANG	2016-05-10	5:1	mm	A008

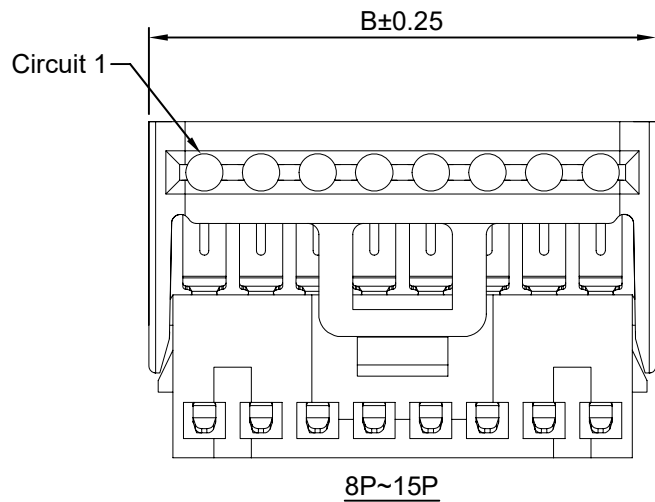
修订 REV	标记 MARK	修改摘要 REVISION DESCRIPTION	签名 SIGNATURE	日期 DATE
AO		NEW RELEASE	WANG	2016-05-10



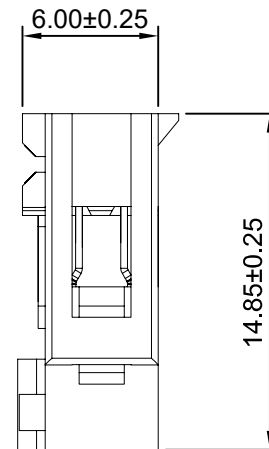
2P~7P



16P~20P



8P~15P



Ordering Information & Dimensions

Circuits	Dimensions(mm)		Circuits	Dimensions(mm)	
	A	B		A	B
2P	2.50	9.70	12P	27.50	34.70
3P	5.00	12.20	13P	30.00	37.20
4P	7.50	14.70	14P	32.50	39.70
5P	10.00	17.20	15P	35.00	42.20
6P	12.50	19.70	16P	37.50	44.70
7P	15.00	22.20	17P	40.00	47.20
8P	17.50	24.70	18P	42.50	49.70
9P	20.00	27.20	19P	45.00	52.20
10P	22.50	29.70	20P	47.50	54.70
11P	25.00	32.20			

SPECIFICATIONS:

Current Rating: 5A AC,DC  
Voltage Rating: 250V AC,DC  
Temperature Range: -25°C ~ +85°C  
Contact Resistance: 10mΩ Max  
Insulation Resistance: 1000MΩ Min  
Withstanding Voltage: 1500V AC/minute  
Pin Material: Phosphor Bronze/Tin over Nickel  
Material: PBT,UL94V-0(Gray)

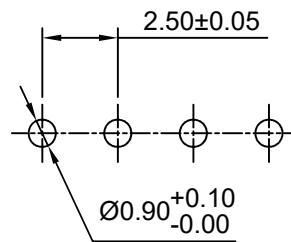
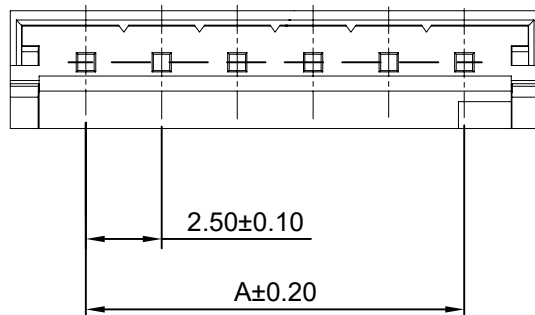


深圳市华德共创科技有限公司

Shenzhen Huade co-create Technology Co.,LTD  
TEL : 0755-27129737 FAX : 0755-29940187

-TOLERANCES- UNLESS OTHERWISE SPECIFIED 公差参数表						TITLE: 产品名称: 2.50mm Pitch Housing			
X.X	±0.30	X.X°	±3°	APPD: 核准:	XIE	PART NO: 产品编号: HDGC2502HWV-XP			
X.XX	±0.30	X.XX°	±2°	CHECK: 校对:	WANG	DATE	SCALE	UNIT	CODE NUMBER
X.XXX	±0.10	X.XXX°	±1°	DRAW: 绘图:	WANG	2016-05-10	3:1	mm	A008

修订 REV	标记 MARK	修改摘要 REVISION DESCRIPTION	签名 SIGNATURE	日期 DATE
AO		NEW RELEASE	WANG	2016-05-10



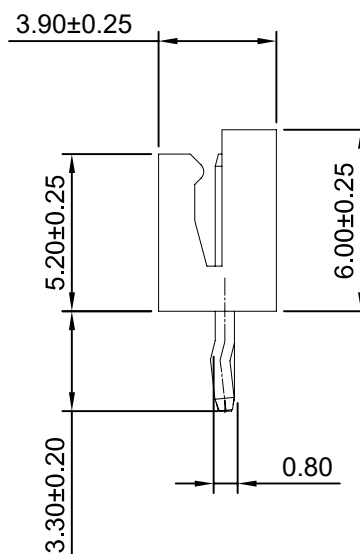
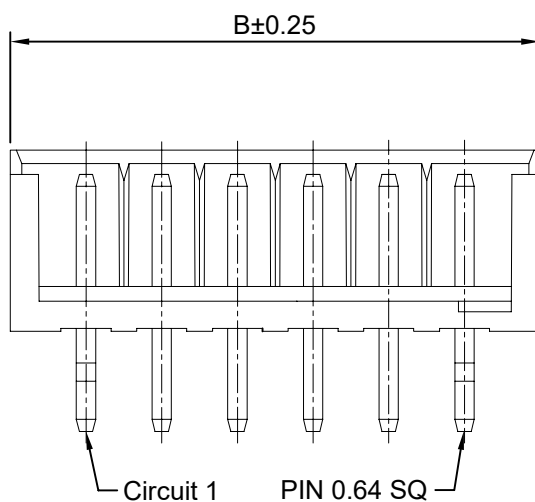
P.C.B LAYOUT

**SPECIFICATIONS:**

Current Rating: 3A AC,DC  
Voltage Rating: 250V AC,DC  
Temperature Range: -25°C ~ +85°C  
Contact Resistance: 10mΩ Max  
Insulation Resistance: 1000MΩ Min  
Withstanding Voltage: 800V AC/minute  
Pin Material: Brass/Tin-plated  
Material: Nylon 66,UL94V-0(White)  
Soldering Temperature: 260°C±5°C  
Immersion Period: 5 seconds

**Ordering Information & Dimensions**

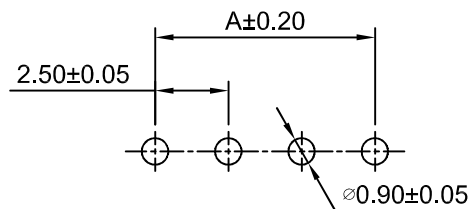
Circuits	Dimensions(mm)		Circuits	Dimensions(mm)	
	A	B		A	B
2P	2.50	7.50	9P	20.00	25.00
3P	5.00	10.00	10P	22.50	27.50
4P	7.50	12.50	11P	25.00	30.00
5P	10.00	15.00	12P	27.50	32.50
6P	12.50	17.50	13P	30.00	35.00
7P	15.00	20.00	14P	32.50	37.50
8P	17.50	22.50	15P	35.00	40.00



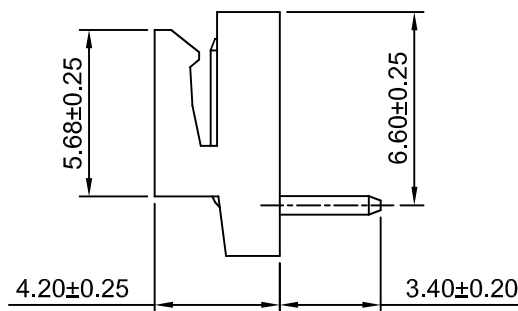
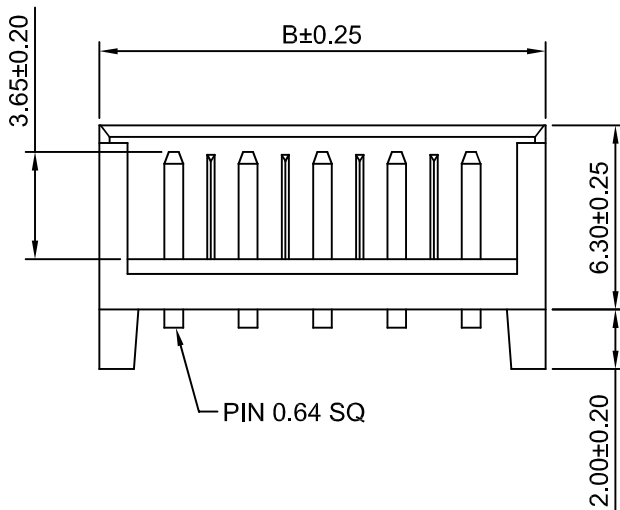
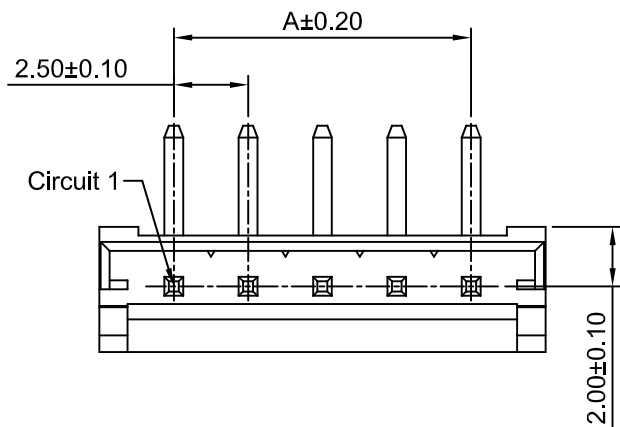
**HDGC** 深圳市华德共创科技有限公司  
Shenzhen Huade co-create Technology Co.,LTD  
TEL : 0755-27129737 FAX : 0755-29940187

-TOLERANCES- UNLESS OTHERWISE SPECIFIED 公差参数表						TITLE: 2.50mm Pitch 产品名称: 180° Wafer			
X.X	±0.30	X.X°	±3°	APPD: 核准:	XIE	PART NO: 产品编号: HDGC2502WV-XP			
X.XX	±0.30	X.XX°	±2°	CHECK: 校对:	WANG	DATE	SCALE	UNIT	CODE NUMBER
X.XXX	±0.10	X.XXX°	±1°	DRAW: 绘图:	WANG	2016-05-10	4:1	mm	A008

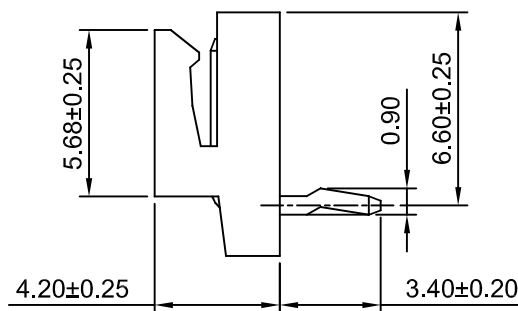
修订 REV	标记 MARK	修改摘要 REVISION DESCRIPTION	签名 SIGNATURE	日期 DATE
AO		NEW RELEASE	WANG	2018-09-28



P.C.B LAYOUT



Type 2



Type 1

Ordering Information:

HDGC2502WR-XP - \*\*\*  
1 2

- 1.Part No.
- 2.Type:  
(blank) - Type 1  
2 - Type 2

SPECIFICATIONS:

Current Rating: 3A AC,DC  
Voltage Rating: 250V AC,DC  
Temperature Range: -25°C ~ +85°C  
Contact Resistance: 20mΩ Max  
Insulation Resistance: 1000MΩ Min  
Withstanding Voltage: 1000V AC/minute  
Pin Material: Brass/Tin over Nickel  
Material: Nylon 66,UL94V-0(White)

Ordering Information & Dimensions

Circuits	Dimensions(mm)		Circuits	Dimensions(mm)	
	A	B		A	B
2P	2.50	7.50	9P	20.00	25.00
3P	5.00	10.00	10P	22.50	27.50
4P	7.50	12.50	11P	25.00	30.00
5P	10.00	15.00	12P	27.50	32.50
6P	12.50	17.50	13P	30.00	35.00
7P	15.00	20.00	14P	32.50	37.50
8P	17.50	22.50	15P	35.00	40.00

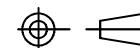


深圳市华德共创科技有限公司

Shenzhen Huade co-create Technology Co.,LTD

TEL : 0755-27129737 FAX : 0755-29940187

-TOLERANCES-  
UNLESS OTHERWISE SPECIFIED  
公差参数表



TITLE: 2.50mm Pitch  
产品名称: 90° Wafer

X.X ±0.30 X.X° ±3°

APPD: 核准: XIE

PART NO: 产品编号: HDGC2502WR-XP

X.XX ±0.30 X.XX° ±2°

CHECK: 校对: WANG

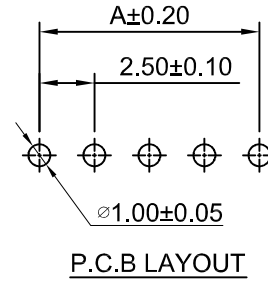
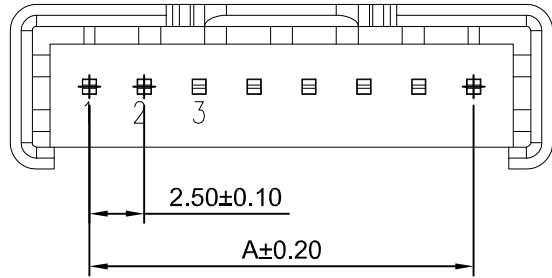
DATE SCALE UNIT CODE NUMBER

X.XXX ±0.10 X.XXX° ±1°

DRAW: 绘图: WANG

2018-09-28 4:1 mm A008

修订 REV	标记 MARK	修改摘要 REVISION DESCRIPTION	签名 SIGNATURE	日期 DATE
AO		NEW RELEASE	WANG	2018-09-28

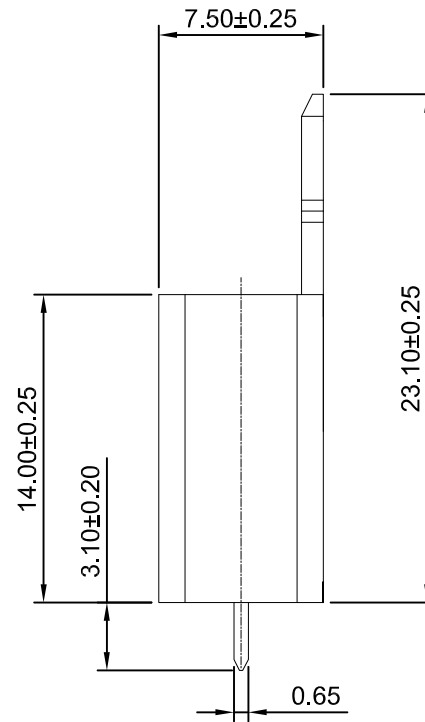
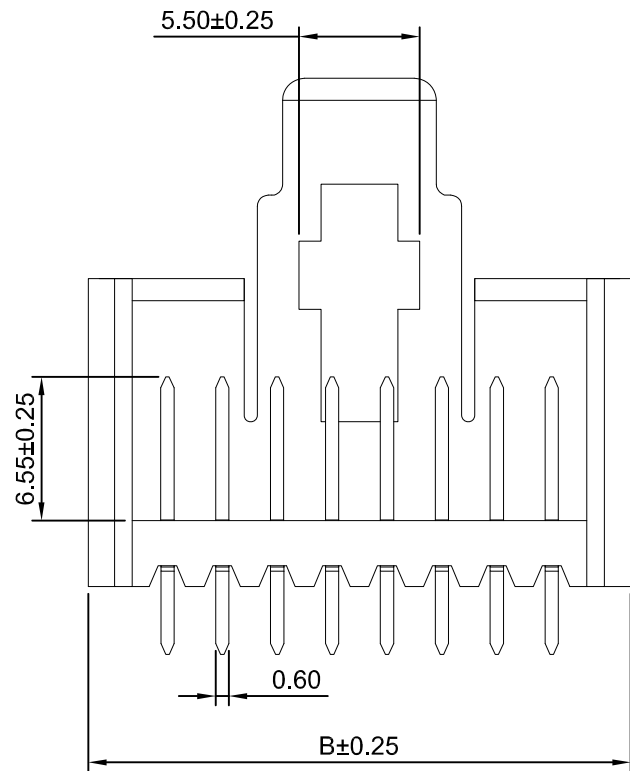


**SPECIFICATIONS:**

Current Rating: 5A AC,DC  
Voltage Rating: 250V AC,DC  
Temperature Range: -25°C ~ +85°C  
Contact Resistance: 10mΩ Max  
Insulation Resistance: 1000MΩ Min  
Withstanding Voltage: 1500V AC/minute  
Pin Material: Brass/Tin-plated  
Material: PBT+30%GF,UL94V-0(Gray)

**Ordering Information & Dimensions**

Circuits	Dimensions(mm)		Circuits	Dimensions(mm)	
	A	B		A	B
4P	7.50	14.70	13P	30.00	37.20
5P	10.00	17.20	14P	32.50	39.70
6P	12.50	19.70	15P	35.00	42.20
7P	15.00	22.20	16P	37.50	44.70
8P	17.50	24.70	17P	40.00	47.20
9P	20.00	27.20	18P	42.50	49.70
10P	22.50	29.70	19P	45.00	52.20
11P	25.00	32.20	20P	47.50	54.70
12P	27.50	34.70			

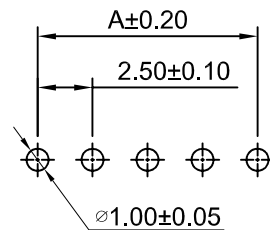
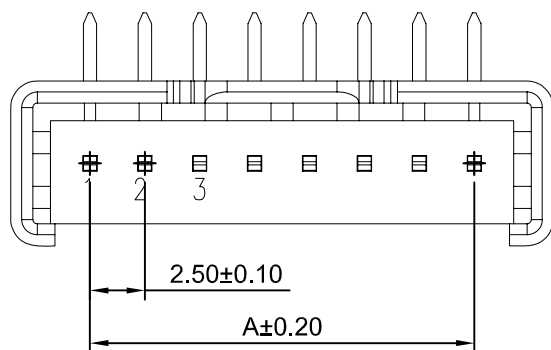


**深圳市华德共创科技有限公司**

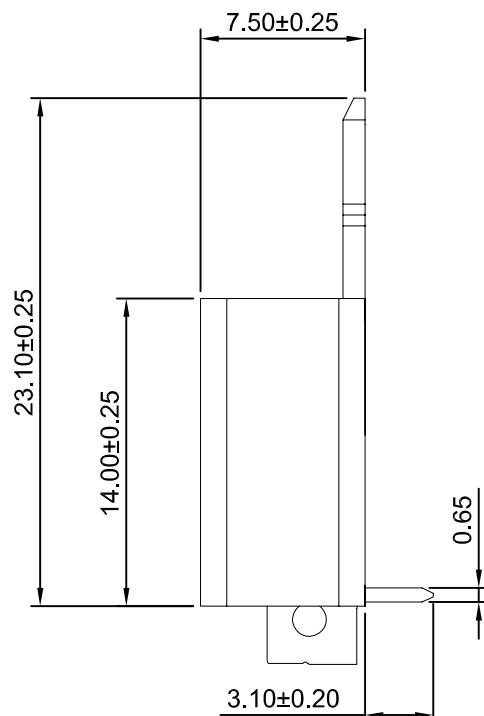
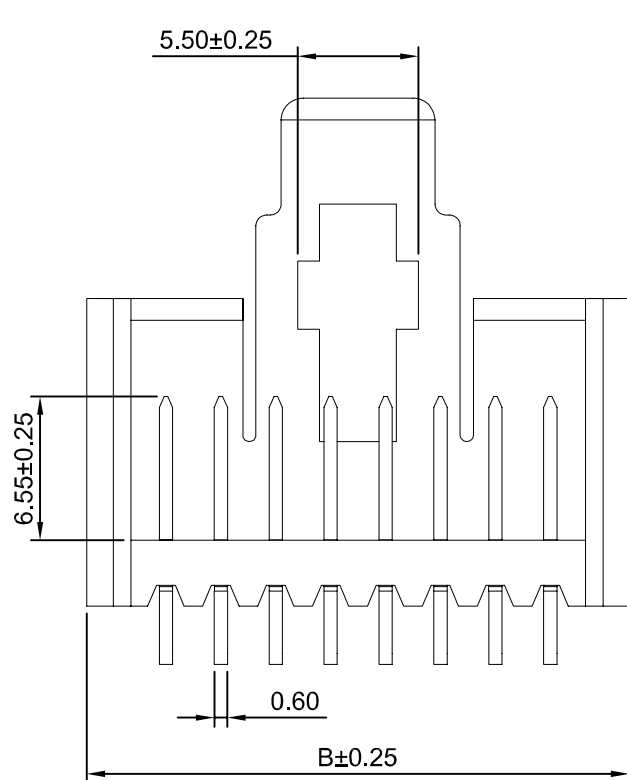
Shenzhen Huade co-create Technology Co.,LTD  
TEL : 0755-27129737 FAX : 0755-29940187

-TOLERANCES- UNLESS OTHERWISE SPECIFIED 公差参数表						TITLE: 产品名称: 2.50mm Pitch 180° Wafer			
X.X	±0.30	X.X°	±3°	APPD: 核准:	XIE	PART NO: 产品编号: HDGC2502WVA-XP			
X.XX	±0.30	X.XX°	±2°	CHECK: 校对:	WANG	DATE	SCALE	UNIT	CODE NUMBER
X.XXX	±0.10	X.XXX°	±1°	DRAW: 绘图:	WANG	2018-09-28	3:1	mm	A008

修订 REV	标记 MARK	修改摘要 REVISION DESCRIPTION	签名 SIGNATURE	日期 DATE
AO		NEW RELEASE	WANG	2018-09-28



P.C.B LAYOUT



**SPECIFICATIONS:**

Current Rating: 5A AC,DC  
Voltage Rating: 250V AC,DC  
Temperature Range: -25°C ~ +85°C  
Contact Resistance: 10mΩ Max  
Insulation Resistance: 1000MΩ Min  
Withstanding Voltage: 1500V AC/minute  
Pin Material: Brass/Tin-plated  
Material: PBT+30%GF,UL94V-0(Gray)

**Ordering Information & Dimensions**

Circuits	Dimensions(mm)		Circuits	Dimensions(mm)	
	A	B		A	B
2P	2.50	9.70	12P	27.50	34.70
3P	5.00	12.20	13P	30.00	37.20
4P	7.50	14.70	14P	32.50	39.70
5P	10.00	17.20	15P	35.00	42.20
6P	12.50	19.70	16P	37.50	44.70
7P	15.00	22.20	17P	40.00	47.20
8P	17.50	24.70	18P	42.50	49.70
9P	20.00	27.20	19P	45.00	52.20
10P	22.50	29.70	20P	47.50	54.70
11P	25.00	32.20			

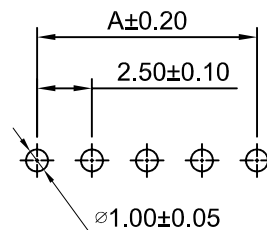
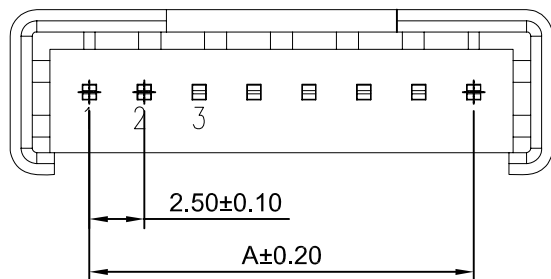


深圳市华德共创科技有限公司

Shenzhen Huade co-create Technology Co.,LTD  
TEL : 0755-27129737 FAX : 0755-29940187

-TOLERANCES- UNLESS OTHERWISE SPECIFIED 公差参数表						TITLE: 2.50mm Pitch 产品名称: 90° Wafer			
X.X	±0.30	X.X°	±3°	APPD: 核准:	XIE	PART NO: 产品编号: HDGC2502WRA-XP			
X.XX	±0.30	X.XX°	±2°	CHECK: 校对:	WANG	DATE	SCALE	UNIT	CODE NUMBER
X.XXX	±0.10	X.XXX°	±1°	DRAW: 绘图:	WANG	2018-09-28	3:1	mm	A008

修订 REV	标记 MARK	修改摘要 REVISION DESCRIPTION	签名 SIGNATURE	日期 DATE
AO		NEW RELEASE	WANG	2018-09-28



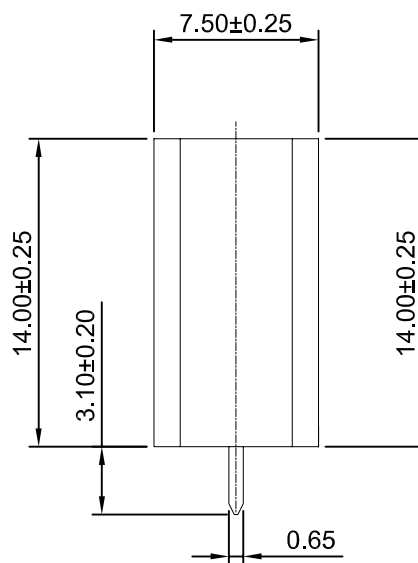
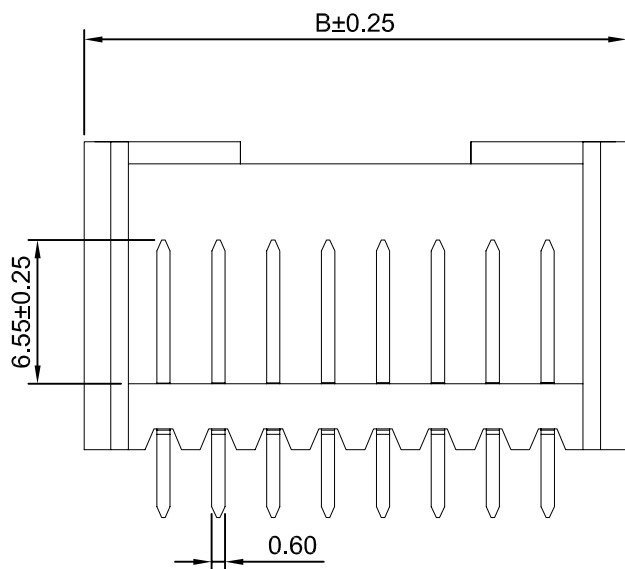
P.C.B LAYOUT

**SPECIFICATIONS:**

Current Rating: 5A AC,DC  
Voltage Rating: 250V AC,DC  
Temperature Range: -25°C ~ +85°C  
Contact Resistance: 10mΩ Max  
Insulation Resistance: 1000MΩ Min  
Withstanding Voltage: 1500V AC/minute  
Pin Material: Brass/Tin-plated  
Material: PBT+30%GF,UL94V-0(Gray)

**Ordering Information & Dimensions**

Circuits	Dimensions(mm)		Circuits	Dimensions(mm)	
	A	B		A	B
2P	2.50	9.70	12P	27.50	34.70
3P	5.00	12.20	13P	30.00	37.20
4P	7.50	14.70	14P	32.50	39.70
5P	10.00	17.20	15P	35.00	42.20
6P	12.50	19.70	16P	37.50	44.70
7P	15.00	22.20	17P	40.00	47.20
8P	17.50	24.70	18P	42.50	49.70
9P	20.00	27.20	19P	45.00	52.20
10P	22.50	29.70	20P	47.50	54.70
11P	25.00	32.20			

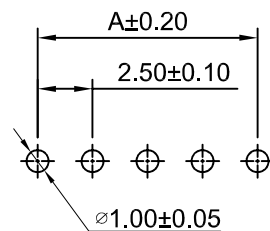
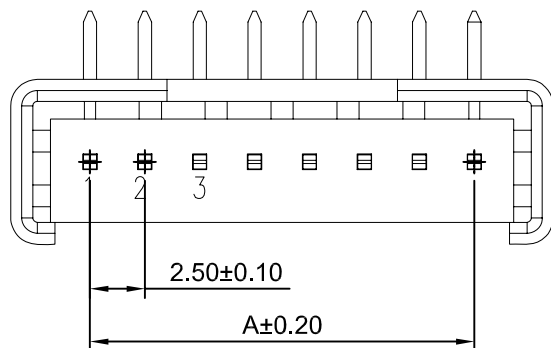


**HDGC** 深圳市华德共创科技有限公司  
Shenzhen Huade co-create Technology Co.,LTD  
TEL : 0755-27129737 FAX : 0755-29940187

-TOLERANCES- UNLESS OTHERWISE SPECIFIED 公差参数表						TITLE: 2.50mm Pitch 产品名称: 180° Wafer			
X.X	±0.30	X.X°	±3°	APPD: 核准:	XIE	PART NO: 产品编号: HDGC2502WVA-N-XP			
X.XX	±0.30	X.XX°	±2°	CHECK: 校对:	WANG	DATE	SCALE	UNIT	CODE NUMBER
X.XXX	±0.10	X.XXX°	±1°	DRAW: 绘图:	WANG	2018-09-28	3:1	mm	A008



修订 REV	标记 MARK	修改摘要 REVISION DESCRIPTION	签名 SIGNATURE	日期 DATE
AO		NEW RELEASE	WANG	2018-09-28



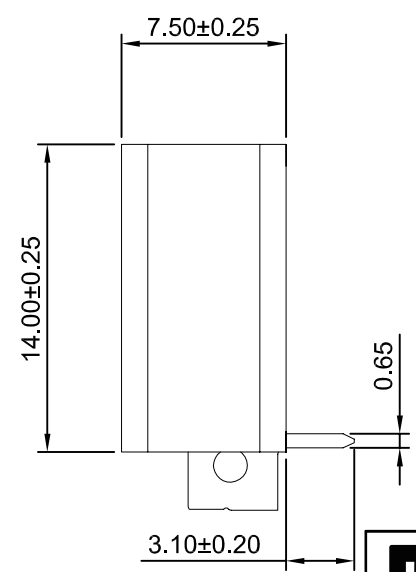
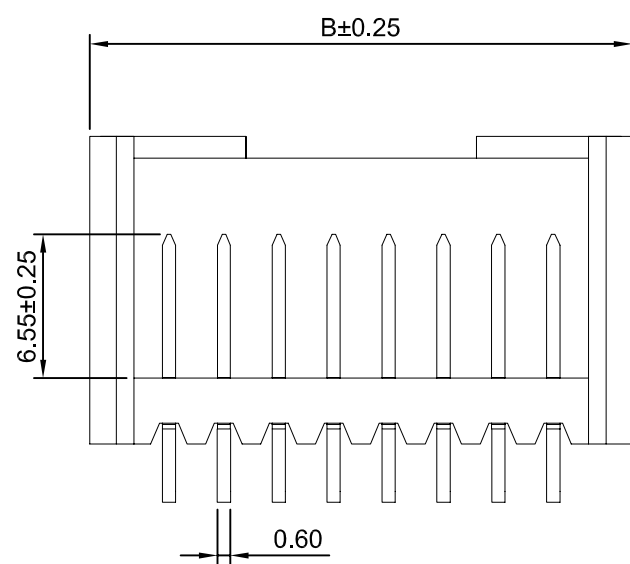
P.C.B LAYOUT

**SPECIFICATIONS:**


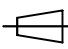
Current Rating: 5A AC,DC  
Voltage Rating: 250V AC,DC  
Temperature Range: -25°C ~ +85°C  
Contact Resistance: 10mΩ Max  
Insulation Resistance: 1000MΩ Min  
Withstanding Voltage: 1500V AC/minute  
Pin Material: Brass/Tin-plated  
Material: PBT+30%GF,UL94V-0(Gray)

**Ordering Information & Dimensions**

Circuits	Dimensions(mm)		Circuits	Dimensions(mm)	
	A	B		A	B
2P	2.50	9.70	12P	27.50	34.70
3P	5.00	12.20	13P	30.00	37.20
4P	7.50	14.70	14P	32.50	39.70
5P	10.00	17.20	15P	35.00	42.20
6P	12.50	19.70	16P	37.50	44.70
7P	15.00	22.20	17P	40.00	47.20
8P	17.50	24.70	18P	42.50	49.70
9P	20.00	27.20	19P	45.00	52.20
10P	22.50	29.70	20P	47.50	54.70
11P	25.00	32.20			



**HDGC** 深圳市华德共创科技有限公司  
Shenzhen Huade co-create Technology Co.,LTD  
TEL : 0755-27129737 FAX : 0755-29940187

-TOLERANCES- UNLESS OTHERWISE SPECIFIED 公差参数表				 		TITLE: 2.50mm Pitch 产品名称: 90° Wafer			
X.X	±0.30	X.X°	±3°	APPD: 核准:	XIE	PART NO: 产品编号: HDGC2502WRA-N-XP			
X.XX	±0.30	X.XX°	±2°	CHECK: 校对:	WANG	DATE	SCALE	UNIT	CODE NUMBER
X.XXX	±0.10	X.XXX°	±1°	DRAW: 绘图:	WANG	2018-09-28	3:1	mm	A008



修订 REV	标记 MARK	修改摘要 REVISION DESCRIPTION	签名 SIGNATURE	日期 DATE
AO		NEW RELEASE	WANG	2018-09-28

Ordering Information:  
**HDGC2502WRB-XP** - \*\*\*  
 1 2

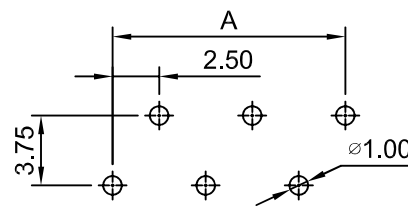
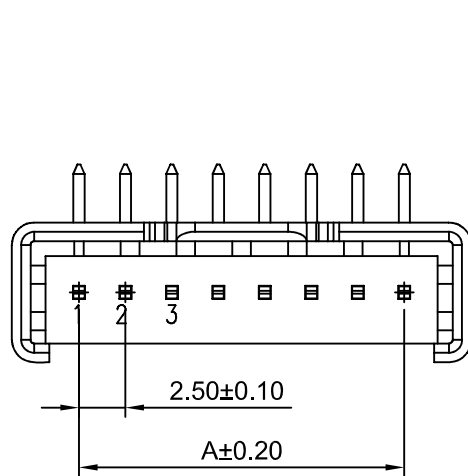
1.Part No.  
 2.Style:  
 (Blank):TYPE 1  
 2:TYPE 2

**SPECIFICATIONS:**

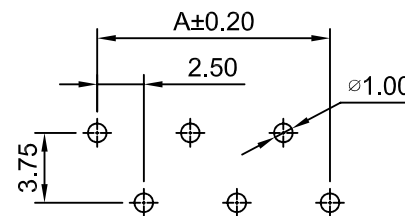
Current Rating: 5A AC,DC  
 Voltage Rating: 250V AC,DC  
 Temperature Range: -25°C ~ +85°C  
 Contact Resistance: 10mΩ Max  
 Insulation Resistance: 1000MΩ Min  
 Withstanding Voltage: 1500V AC/minute  
 Pin Material: Brass/Tin-plated  
 Material: PBT+30%GF,UL94V-0(Gray)

**Ordering Information & Dimensions**

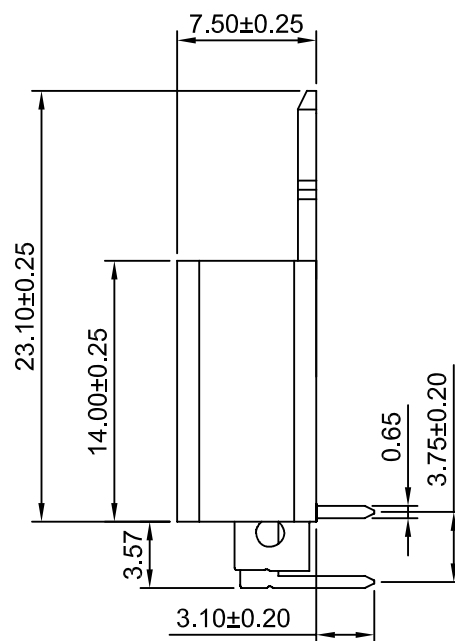
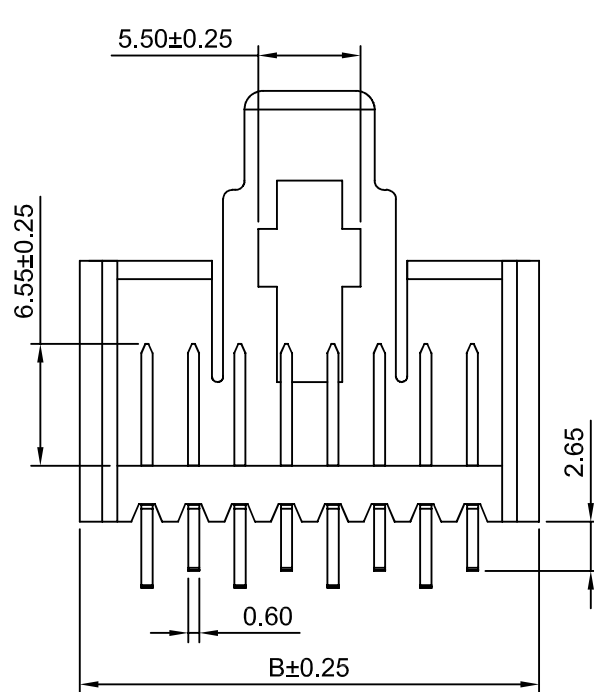
Circuits	Dimensions(mm)		Circuits	Dimensions(mm)	
	A	B		A	B
2P	2.50	9.70	12P	27.50	34.70
3P	5.00	12.20	13P	30.00	37.20
4P	7.50	14.70	14P	32.50	39.70
5P	10.00	17.20	15P	35.00	42.20
6P	12.50	19.70	16P	37.50	44.70
7P	15.00	22.20	17P	40.00	47.20
8P	17.50	24.70	18P	42.50	49.70
9P	20.00	27.20	19P	45.00	52.20
10P	22.50	29.70	20P	47.50	54.70
11P	25.00	32.20			



**P.C.B LAYOUT (TYPE 1)**



**P.C.B LAYOUT (TYPE 2)**



**深圳市华德共创科技有限公司**

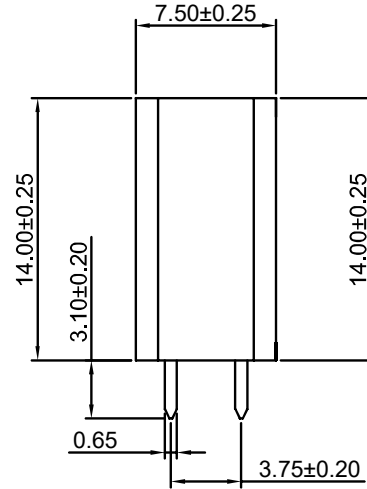
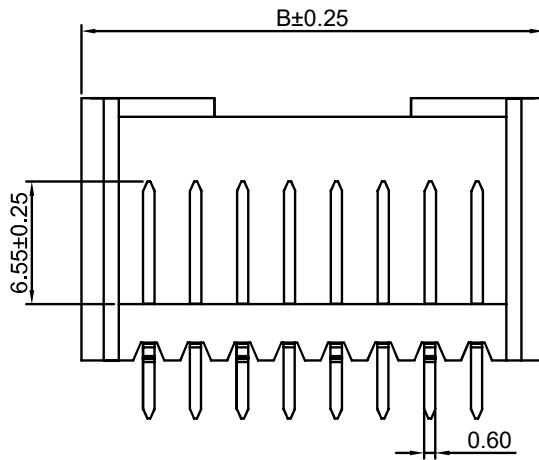
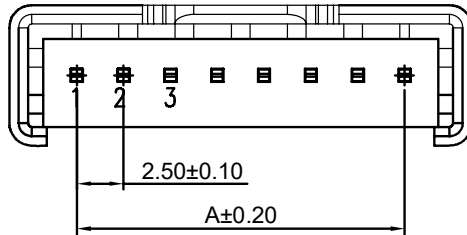
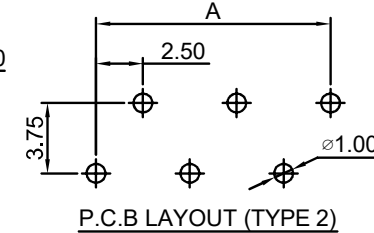
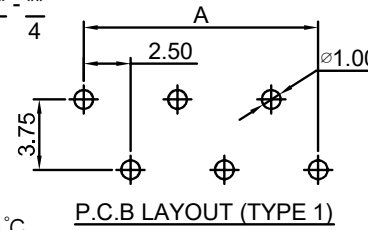
Shenzhen Huade co-create Technology Co.,LTD  
 TEL : 0755-27129737 FAX : 0755-29940187

-TOLERANCES- UNLESS OTHERWISE SPECIFIED 公差参数表				TITLE: 产品名称: 2.50mm Pitch 90° Wafer	
X.X	±0.30	X.X°	±3°	APPD: 核准: XIE	PART NO: 产品编号: HDGC2502WRB-XP
X.XX	±0.30	X.XX°	±2°	CHECK: 校对: WANG	DATE SCALE UNIT CODE NUMBER
X.XXX	±0.10	X.XXX°	±1°	DRAW: 绘图: WANG	2018-09-28 2.5:1 mm A008

修订 REV	标记 MARK	修改摘要 REVISION DESCRIPTION	签名 SIGNATURE	日期 DATE
AO		NEW RELEASE	WANG	2018-09-28

Ordering Information:  
 HDGC2502WVB-N-XP -  $\frac{***}{2}$  -  $\frac{***}{3}$  -  $\frac{**}{4}$

- Part No.
- Style:  
 (Blank): TYPE 1  
 2: TYPE 2
- Material:  
 (Blank): PBT, UL94V-0  
 GWT: PBT, UL94V-0, GWT 750 °C
- Finish:  
 (blank): Tin over Nickel  
 G: Gold over Nickel



### Ordering Information & Dimensions

PART NO.	Dimensions	
	A	B
2P	2.50	9.70
3P	5.00	12.20
4P	7.50	14.70
5P	10.00	17.20
6P	12.50	19.70
7P	15.00	22.20
8P	17.50	24.70
9P	20.00	27.20
10P	22.50	29.70
11P	25.00	32.20
12P	27.50	34.70
13P	30.00	37.20
14P	32.50	39.70
15P	35.00	42.20
16P	37.50	44.70
17P	40.00	47.20
18P	42.50	49.70
19P	45.00	52.20
20P	47.50	54.70

Unit: mm



深圳市华德共创科技有限公司

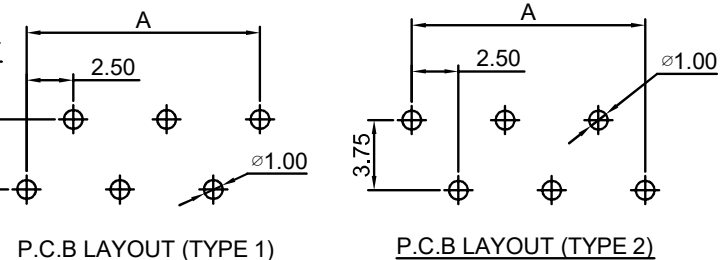
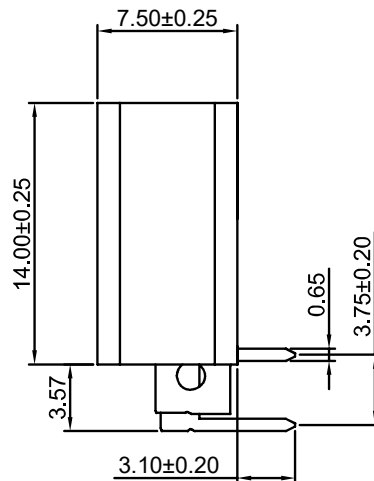
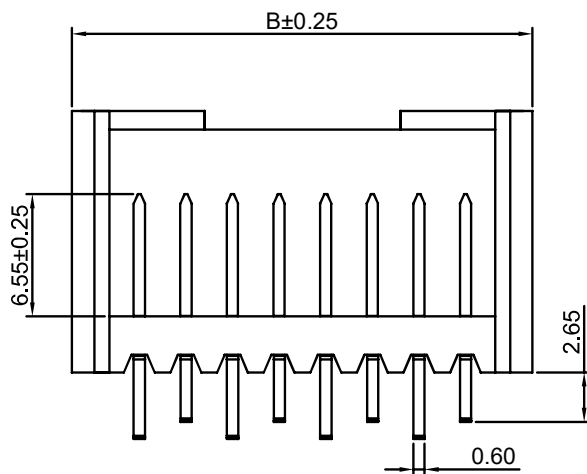
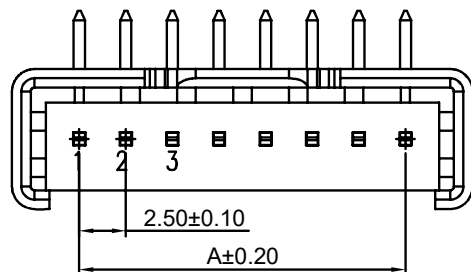
Shenzhen Huade co-create Technology Co., LTD  
 TEL : 0755-27129737 FAX : 0755-29940187

-TOLERANCES- UNLESS OTHERWISE SPECIFIED 公差参数表						TITLE: 产品名称: 2.50mm Pitch 180° Wafer			
X.X	±0.30	X.X°	±3°	APPD: 核准:	XIE	PART NO: 产品编号: HDGC2502WVB-N-XP			
X.XX	±0.30	X.XX°	±2°	CHECK: 校对:	WANG	DATE	SCALE	UNIT	CODE NUMBER
X.XXX	±0.10	X.XXX°	±1°	DRAW: 绘图:	WANG	2018-09-28	2.5:1	mm	A008

修订 REV	标记 MARK	修改摘要 REVISION DESCRIPTION	签名 SIGNATURE	日期 DATE
AO		NEW RELEASE	WANG	2018-09-28

Ordering Information:  
 HDGC2502WRB-N-XP - \*\*\* - \*\*\* - \*\*  
 1 2 3 4

- Part No.
- Style:  
(Blank):TYPE 1  
2:TYPE 2
- Material:  
(Blank):PBT,UL94V-0  
GWT:PBT,UL94V-0,GWT 750°C
- Finish:  
(blank):Tin over Nickel  
G:Gold over Nickel



### Ordering Information & Dimensions

PART NO.	Dimensions	
	A	B
2P	2.50	9.70
3P	5.00	12.20
4P	7.50	14.70
5P	10.00	17.20
6P	12.50	19.70
7P	15.00	22.20
8P	17.50	24.70
9P	20.00	27.20
10P	22.50	29.70
11P	25.00	32.20
12P	27.50	34.70
13P	30.00	37.20
14P	32.50	39.70
15P	35.00	42.20
16P	37.50	44.70
17P	40.00	47.20
18P	42.50	49.70
19P	45.00	52.20
20P	47.50	54.70

Unit: mm



深圳市华德共创科技有限公司

Shenzhen Huade co-create Technology Co.,LTD

TEL : 0755-27129737 FAX : 0755-29940187

-TOLERANCES- UNLESS OTHERWISE SPECIFIED 公差参数表						TITLE: 2.50mm Pitch 产品名称: 90° Wafer			
X.X	±0.30	X.X°	±3°	APPD: 核准:	XIE	PART NO: 产品编号: HDGC2502WRB-N-XP			
X.XX	±0.30	X.XX°	±2°	CHECK: 校对:	WANG	DATE	SCALE	UNIT	CODE NUMBER
X.XXX	±0.10	X.XXX°	±1°	DRAW: 绘图:	WANG	2018-09-28	2.5:1	mm	A008