

1-2102061-8 ✓ ACTIVE

Mezalok | AMP Mezalok

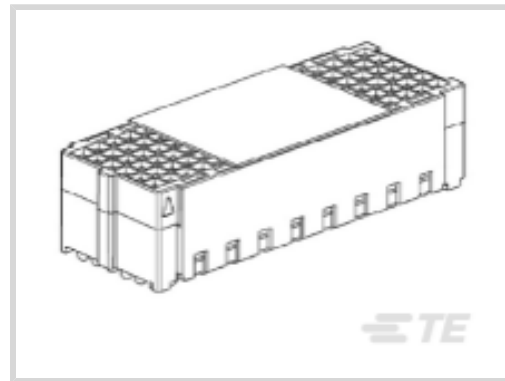
TE Internal #: 1-2102061-8

PCB Mount Receptacle, Vertical, Board-to-Board, 114 Position, 1.27 mm [.05 in] Centerline, Gold, Surface Mount - Solder Ball, Beige, AMP Mezalok

[View on TE.com >](#)



Connectors > PCB Connectors > PCB Headers & Receptacles > High-speed Mezzanine Connector: Pin & Socket Connector



PCB Connector Assembly Type: **PCB Mount Receptacle**

PCB Mount Orientation: **Vertical**

Connector System: **Board-to-Board**

Number of Positions: **114**

Number of Rows: **6**

[All High-speed Mezzanine Connector: Pin & Socket Connector \(34\)](#)

Features

Product Type Features

Applied Pressure	Low
Ground Feature Type	Signal Ground Contacts
PCB Connector Assembly Type	PCB Mount Receptacle
Connector System	Board-to-Board
Sealable	No
Connector & Contact Terminates To	Printed Circuit Board

Configuration Features

Keying & Polarized Position Locations	None
Number of Power Positions	0
Number of Columns	19
Number of Loaded Positions	114
Stackable	Yes
Connector Contact Load Condition	Fully Loaded
Number of Signal Positions	114
PCB Mount Orientation	Vertical
Number of Positions	114



Number of Rows	6
----------------	---

Board-to-Board Configuration	Parallel
------------------------------	----------

Electrical Characteristics

Dielectric Withstanding Voltage (Max)	750 VAC
---------------------------------------	---------

Operating Voltage	250 VAC
-------------------	---------

Body Features

Primary Product Color	Beige
-----------------------	-------

Contact Features

Contact Layout	Matrix
----------------	--------

Mating Tab Width	.43 mm[.017 in]
------------------	-----------------

Mating Tab Thickness	.46 mm[.018 in]
----------------------	-----------------

Contact Base Material	Beryllium Copper
-----------------------	------------------

Contact Mating Area Plating Material	Gold
--------------------------------------	------

Contact Mating Area Plating Material Thickness	1.27 μ m[50 μ in]
--	---------------------------

Contact Type	Socket
--------------	--------

Termination Features

Termination Method to Printed Circuit Board	Surface Mount - Solder Ball
---	-----------------------------

Mechanical Attachment

Mating Alignment Type	Keyed
-----------------------	-------

PCB Mount Retention	Without
---------------------	---------

Connector Mounting Type	Board Mount
-------------------------	-------------

Housing Features

Centerline (Pitch)	1.27 mm[.05 in]
--------------------	-----------------

Housing Material	LCP
------------------	-----

Dimensions

Row-to-Row Spacing	1.27 mm[.05 in]
--------------------	-----------------

Stack Height	17 mm[.669 in]
--------------	----------------

Usage Conditions

Operating Temperature Range	-55 – 125 °C[-67 – 257 °F]
-----------------------------	----------------------------

Industry Standards

UL Flammability Rating	UL 94V-0
------------------------	----------

Packaging Features

Packaging Type

Tape & Reel

Product Compliance

For compliance documentation, visit the product page on TE.com>

EU RoHS Directive 2011/65/EU

Compliant

EU ELV Directive 2000/53/EC

Compliant

China RoHS 2 Directive MIIT Order No 32, 2016

No Restricted Materials Above Threshold

EU REACH Regulation (EC) No. 1907/2006

Current ECHA Candidate List: JUNE 2023 (235)

Candidate List Declared Against: JUNE 2023 (235)

Does not contain REACH SVHC

Halogen Content

Low Halogen - Br, Cl, F, I < 900 ppm per homogenous material. Also BFR/CFR/PVC Free

Solder Process Capability

Reflow solder capable to 260°C

Product Compliance Disclaimer

This information is provided based on reasonable inquiry of our suppliers and represents our current actual knowledge based on the information they provided. This information is subject to change. The part numbers that TE has identified as EU RoHS compliant have a maximum concentration of 0.1% by weight in homogenous materials for lead, hexavalent chromium, mercury, PBB, PBDE, DBP, BBP, DEHP, DIBP, and 0.01% for cadmium, or qualify for an exemption to these limits as defined in the Annexes of Directive 2011/65/EU (RoHS2). Finished electrical and electronic equipment products will be CE marked as required by Directive 2011/65/EU. Components may not be CE marked. Additionally, the part numbers that TE has identified as EU ELV compliant have a maximum concentration of 0.1% by weight in homogenous materials for lead, hexavalent chromium, and mercury, and 0.01% for cadmium, or qualify for an exemption to these limits as defined in the Annexes of Directive 2000/53/EC (ELV). Regarding the REACH Regulation, the information TE provides on SVHC in articles for this part number is based on the latest European Chemicals Agency (ECHA) 'Guidance on requirements for substances in articles' posted at this URL: <https://echa.europa.eu/guidance-documents/guidance-on-reach>

Compatible Parts

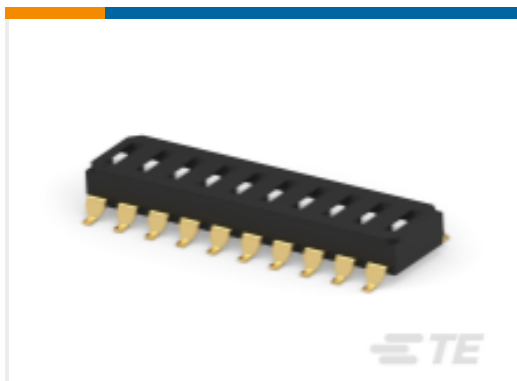
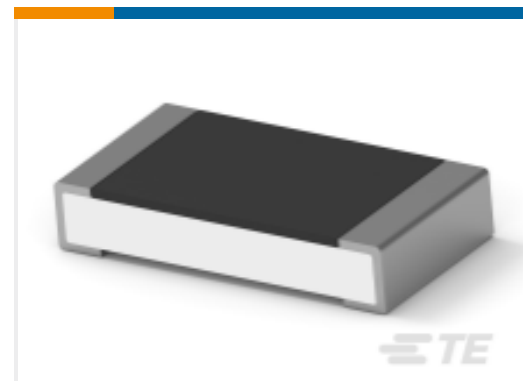
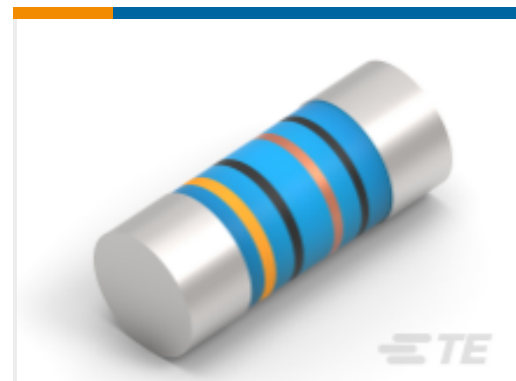
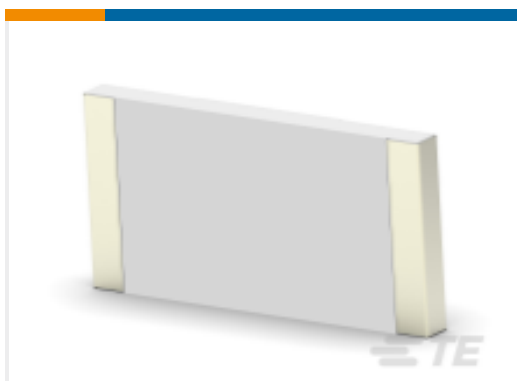
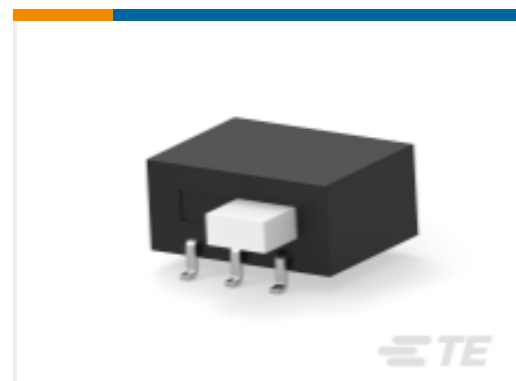


Also in the Series | [AMP Mezalok](#)



PCB Headers & Receptacles(27)

Customers Also Bought

TE Part #3-2319848-1
END STACK DIP 10P G RECESS SEAL
TUBETE Part #4-2176391-7
RQ 1206 37K4 0.1% 10PPM 5K RLTE Part #2176314-4
MELF SMA_A 180R 0.1% 15PPM 0102
0.3WTE Part #1-928836-2
MOD2 PIN WITH A-PIN L/PTE Part #7-2176246-6
CRGS2512 5% 1M8TE Part #3-1415020-1
PT570N20TE Part #1-1437581-1
ASE22RL=AUTOSLIDE DP

Documents

Product Drawings

MEZALOK, SOCKET, 114P, 17MM, LF

English

CAD Files

[3D PDF](#)

3D

Customer View Model

[ENG_CVM_CVM_1-2102061-8_K.2d_dxf.zip](#)

English

Customer View Model

[ENG_CVM_CVM_1-2102061-8_K.3d_igs.zip](#)

English

Customer View Model

[ENG_CVM_CVM_1-2102061-8_K.3d_stp.zip](#)

English

By downloading the CAD file I accept and agree to the [Terms and Conditions](#) of use.



Datasheets & Catalog Pages

SOSA Aligned Interconnect Solutions

English

Product Specifications

Product Specification

English