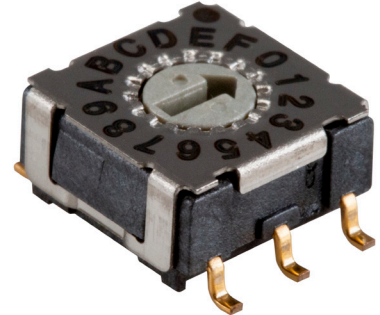


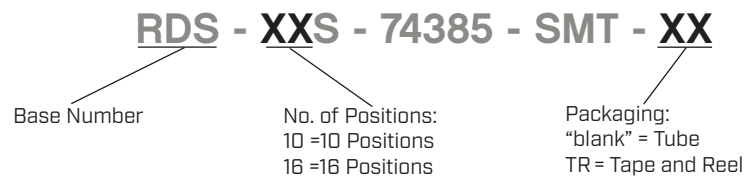
SERIES: RDS-74385-SMT | **DESCRIPTION:** ROTARY DIP SWITCH

FEATURES

- 10 and 16 positions
- flat actuator
- surface mount
- tube or tape and reel packaging


SPECIFICATIONS

| parameter | conditions/description | min | typ | max | units |
|-----------------------|--|-----|--------|-----|---------|
| rated voltage | switching | | | 42 | Vdc |
| | non-switching | | | 42 | Vdc |
| rated current | switching | | | 100 | mA |
| | non-switching | | | 400 | mA |
| withstanding voltage | for 1 minute | | 250 | | Vac |
| contact resistance | | | | 80 | mΩ |
| insulation resistance | at 250 Vdc | 100 | | | MΩ |
| operating torque | | 90 | 120 | 150 | gf*cm |
| actuator travel | continuous rotation | | 360 | | degrees |
| operating temperature | | -60 | | 125 | °C |
| storage temperature | | -60 | | 125 | °C |
| life | at rated voltage, current, 15-20 cycles/minute | | 25,000 | | steps |
| flammability rating | UL94V-0 | | | | |
| RoHS | yes | | | | |
| IP level | IP67 (IEC 60529:2001) | | | | |

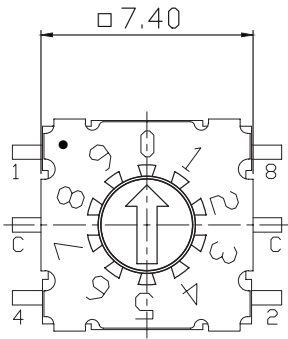
PART NUMBER KEY


MECHANICAL DRAWING

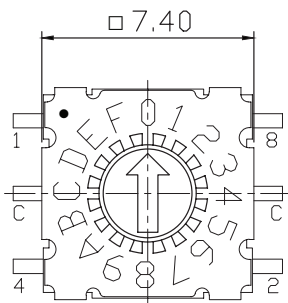
units: mm
 tolerance: ±0.3 mm
 unless otherwise noted

| ITEM | DESCRIPTION | MATERIAL | PLATING/COLOR |
|------|-------------|-----------------|---|
| 1 | actuator | LCP (UL94V-0) | red (10 position) gray (16 position) |
| 2 | housing | LCP (UL94V-0) | black |
| 3 | face plate | stainless steel | |
| 4 | terminals | copper alloy | gold |

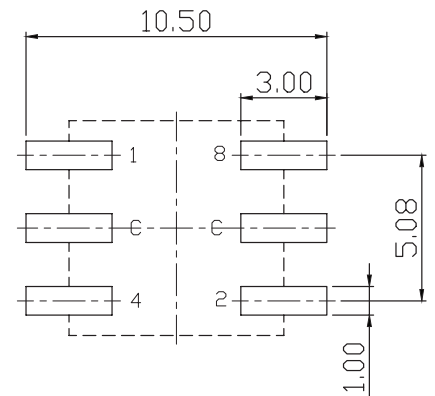
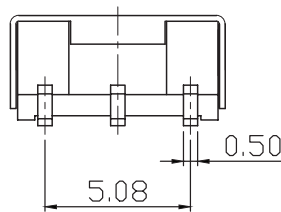
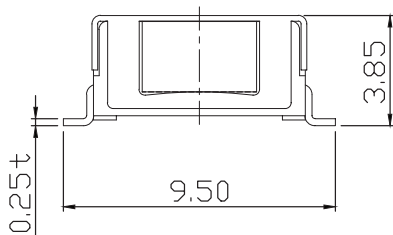
10 POSITION



16 POSITION



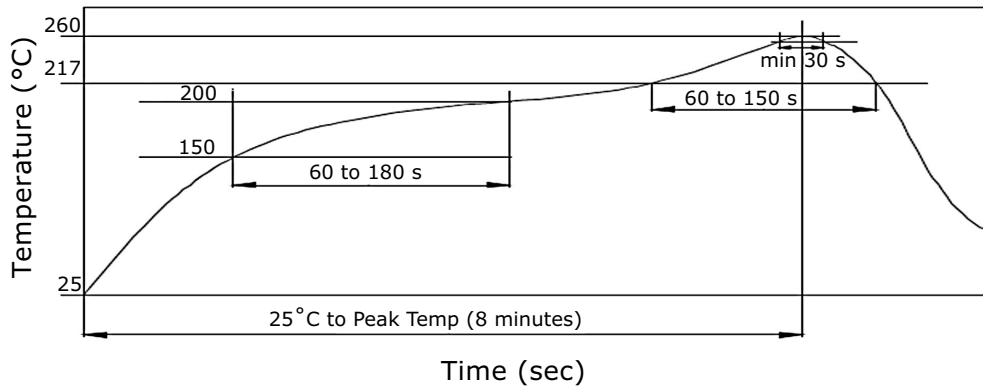
| | | ON ○ | | | | |
|---------|---|-------|------|---|---|---|
| | | OFF ● | CODE | | | |
| TYPE | | POS | 1 | 2 | 4 | 8 |
| 10 STEP | 0 | ● | ● | ● | ● | ● |
| | 1 | ○ | ● | ● | ● | ● |
| | 2 | ● | ○ | ● | ● | ● |
| | 3 | ○ | ○ | ● | ● | ● |
| | 4 | ● | ● | ○ | ● | ● |
| | 5 | ○ | ● | ○ | ● | ● |
| | 6 | ● | ○ | ○ | ● | ● |
| | 7 | ○ | ○ | ○ | ○ | ● |
| | 8 | ● | ● | ● | ● | ○ |
| | 9 | ○ | ● | ● | ● | ○ |
| 16 STEP | A | ● | ○ | ● | ○ | ○ |
| | B | ○ | ○ | ● | ○ | ○ |
| | C | ● | ● | ○ | ○ | ○ |
| | D | ○ | ● | ○ | ○ | ○ |
| | E | ● | ○ | ○ | ○ | ○ |
| | F | ○ | ○ | ○ | ○ | ○ |



Recommended PCB Layout
Top View

SOLDERABILITY

| parameter | conditions/description | min | typ | max | units |
|------------------|------------------------|-----|-----|-----|-------|
| hand soldering | for maximum 3 seconds | | | 350 | °C |
| reflow soldering | | 255 | | 260 | °C |

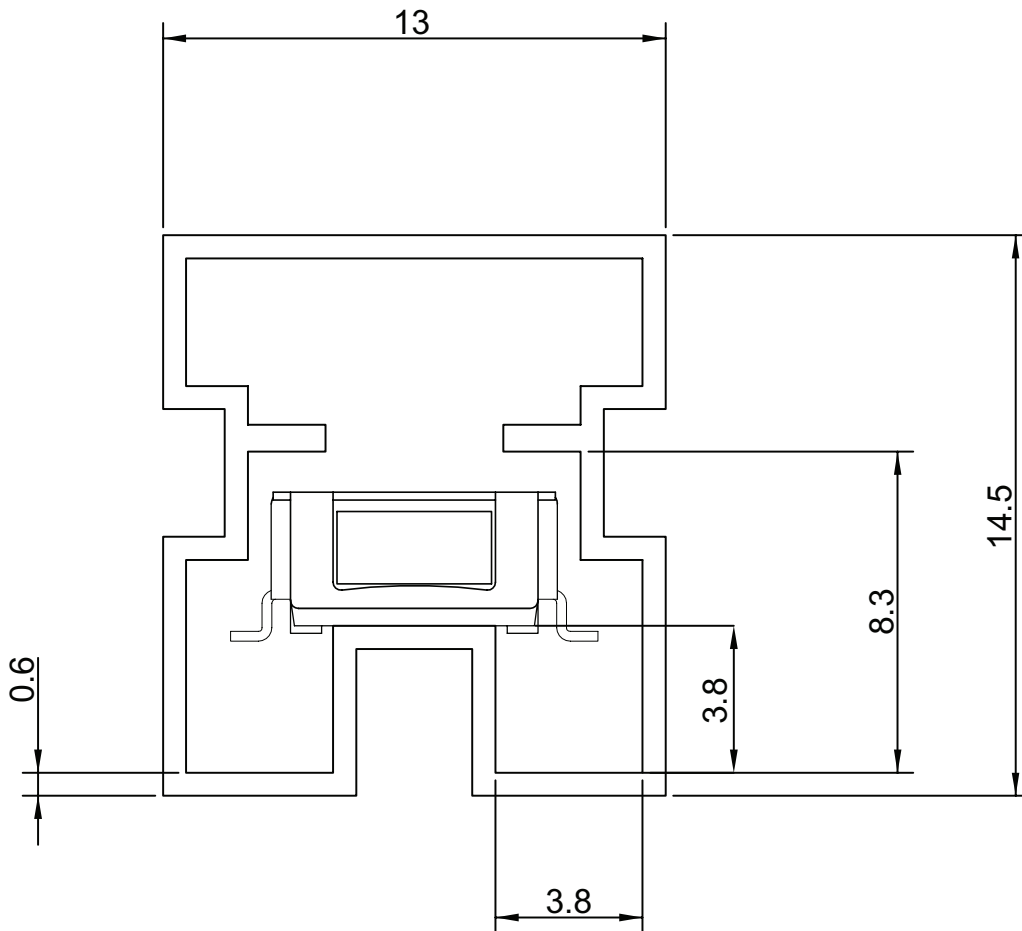


PACKAGING (TUBE)

units: mm

Tube Size: 13.0 x 14.50 x 540 mm

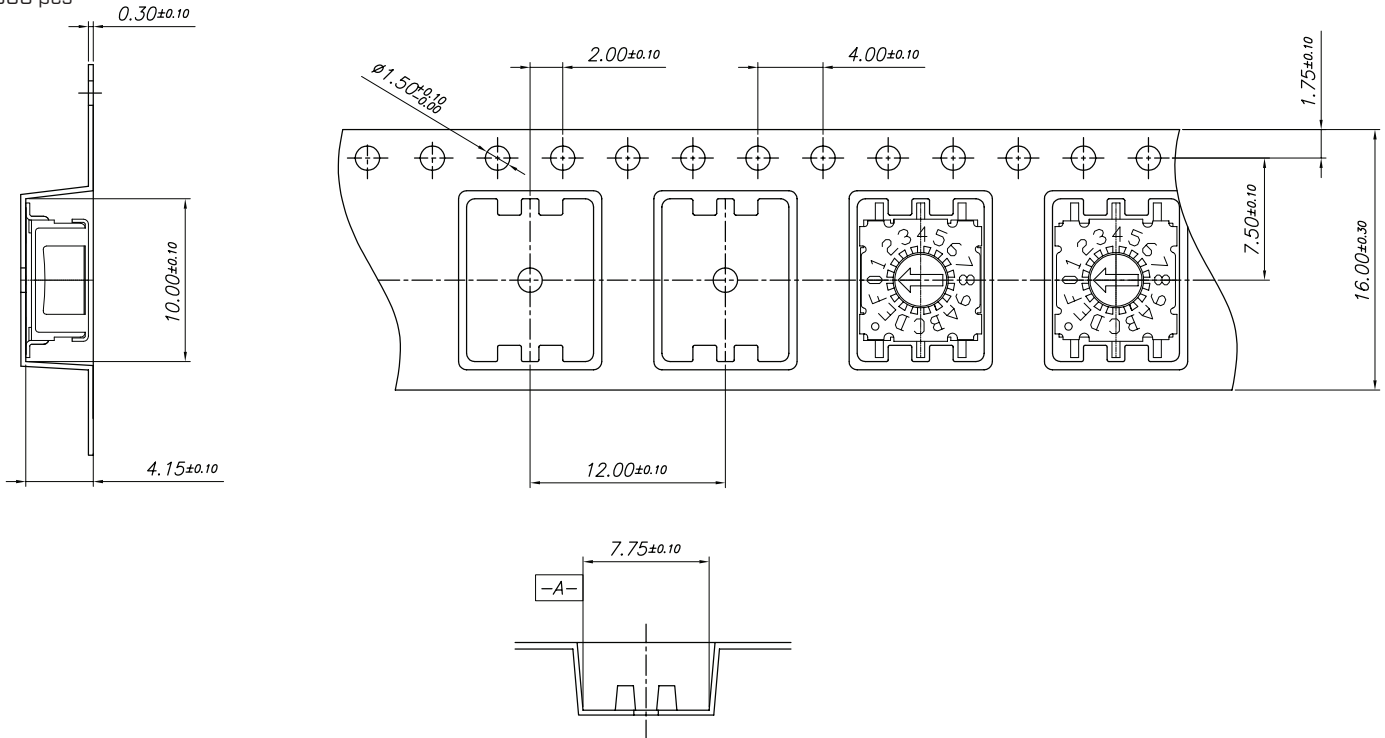
Tube QTY: 70 pcs



PACKAGING (TAPE & REEL)

units: mm

Reel Size: $\varnothing 330$ mm
QTY: 600 pcs



REVISION HISTORY

| rev. | description | date |
|------|------------------------------|------------|
| 1.0 | initial release | 10/06/2020 |
| 1.01 | logo, datasheet style update | 08/05/2022 |

The revision history provided is for informational purposes only and is believed to be accurate.



CUI Devices offers a one (1) year limited warranty. Complete warranty information is listed on our website.

CUI Devices reserves the right to make changes to the product at any time without notice. Information provided by CUI Devices is believed to be accurate and reliable. However, no responsibility is assumed by CUI Devices for its use, nor for any infringements of patents or other rights of third parties which may result from its use.

CUI Devices products are not authorized or warranted for use as critical components in equipment that requires an extremely high level of reliability. A critical component is any component of a life support device or system whose failure to perform can be reasonably expected to cause the failure of the life support device or system, or to affect its safety or effectiveness.

cuidevices.com