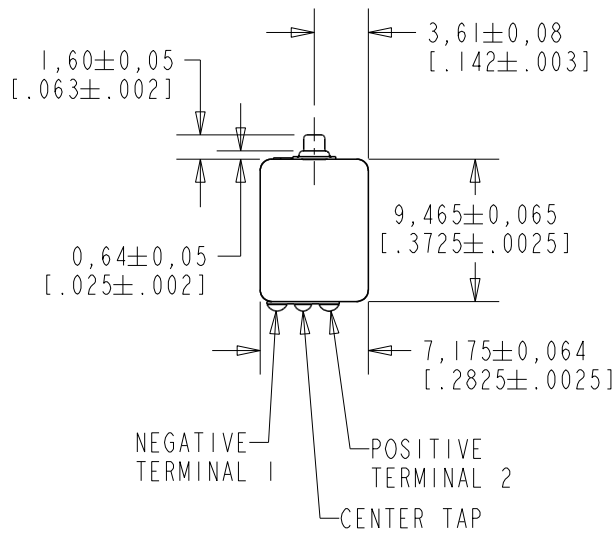
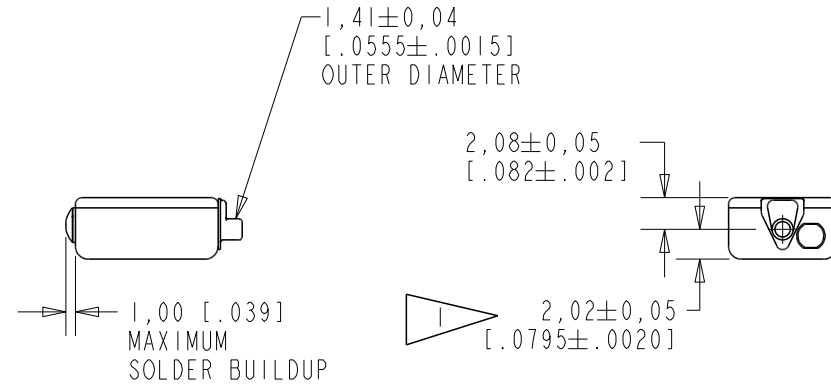
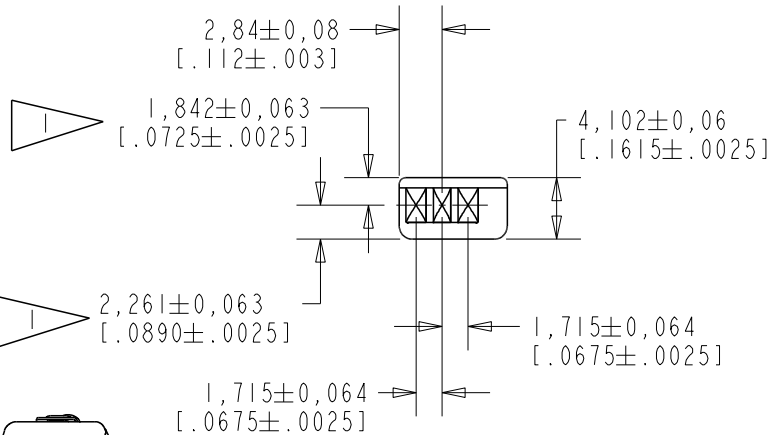


CI-28204-000
SHT 1.1



NOTES:

- 1 LOCATED FROM TWO SURFACES FOR CUSTOMER CONVENIENCE. ONLY APPLICABLE FROM ONE SURFACE, NOT TO BE USED TOGETHER.
- 2 A POSITIVE GOING VOLTAGE AT TERMINAL 2, RELATIVE TO TERMINAL 1, CAUSES AN INCREASE IN PRESSURE AT THE SOUND OUTLET.



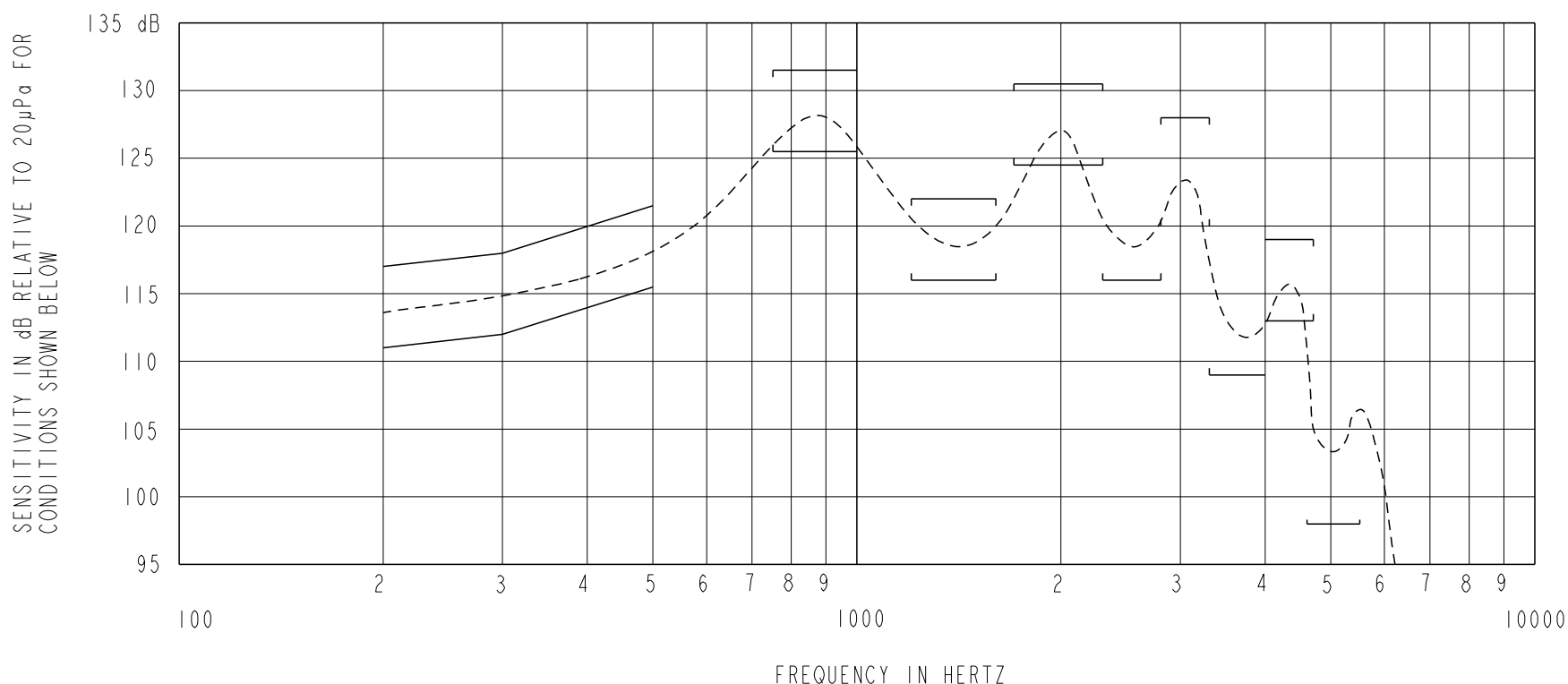
NOMINAL WEIGHT
1.0 GRAM

DIMENSIONS IN MILLIMETERS [INCHES]

KNOWLES CORPORATION

| Revision | C.O. # | Implementation Date | RELEASE LEVEL | REVISION |
|----------|-----------|---------------------|---------------|----------|
| | | | Active | D |
| D | PI0000944 | 11-8-16 | | |

| | | | |
|----------------------|--|--------------|---------------|
| SCALE: 2:1 | | DR. BY: MMM | DATE: 9-19-05 |
| DO NOT SCALE DRAWING | | | |
| TITLE: RECEIVER | | CI-28204-000 | |
| OUTLINE DRAWING | | SHT 1.1 | |
| | | CK. BY: GJP | DATE: 9-26-05 |
| | | APP. BY: GJP | DATE: 9-26-05 |



NOTES:

1. MEASUREMENTS MADE USING 8mm (.315") X 1mm (.039") ID + 28mm (1.10") X 1.5mm (.059") ID EAR HOOK SIMULATOR INTO 25mm (.984") OF 2mm (.079") ID TUBE + 18mm (.709") OF 3mm (.118") ID TUBE + 2 cm³. ANSI S3.6 TYPE HA-3 (IEC 60318-5).

2. SENSITIVITY

| FREQUENCY | MIN. | MAX. |
|-----------|-------|-------|
| 200 | 111.0 | 117.0 |
| 300 | 112.0 | 118.0 |
| 500 | 115.5 | 121.5 |
| 750-1000 | 125.5 | 131.5 |
| 1200-1600 | 116.0 | 122.0 |
| 1700-2300 | 124.5 | 130.5 |
| 2300-2800 | 116.0 | --- |
| 2800-3300 | 120.0 | 128.0 |
| 3300-4000 | 109.0 | --- |
| 4000-4700 | 113.0 | 119.0 |
| 4600-5500 | 98.0 | --- |

- RESPONSE, IMPEDANCE, AND DISTORTION MEASUREMENTS MADE USING THE ELECTRICAL TEST CONDITIONS SHOWN BELOW.
- ELECTRICAL SOURCE IMPEDANCE MUST BE GREATER THAN 20 TIMES IMPEDANCE FOR TEST CONDITIONS BELOW.
- INDIVIDUAL SPECIFICATIONS.

| PORT LOCATION | ELECTRICAL TEST CONDITIONS | | | | IMPEDANCE @ 500 Hz OHMS±15% | DCR @20°C OHMS ±10% | DISTORTION | |
|---------------|----------------------------|-------|------------|-------|-----------------------------|---------------------|------------|----------|
| | RESPONSE & IMPEDANCE | | DISTORTION | | | | MAX. % | FREQ. Hz |
| | AC mA RMS | DC mA | AC mA RMS | DC mA | | | | |
| I2S | 1.60 | 0.0 | 3.20 | 0.0 | 264 | 100 | 10 | 500 |

| Revision | C.O. # | Implementation Date | RELEASE LEVEL | REVISION |
|----------|-----------|---------------------|---------------|----------|
| | | | Active | D |
| D | PI0000944 | 11-8-16 | | |

KNOWLES CORPORATION

WHEN TEST LIMITS ARE USED TO ESTABLISH INCOMING INSPECTION ACCEPTANCE/REJECTION CRITERIA, CORRELATION OF TEST EQUIPMENT WITH KNOWLES IS ALSO REQUIRED FOR ELIMINATION OF EQUIPMENT AND TEST METHOD VARIATION

TITLE: RECEIVER
PERFORMANCE SPECIFICATION

CI-28204-000
SHT 2.1

| DR. BY | DATE |
|---------|---------|
| MMM | 9-19-05 |
| CK. BY | DATE |
| GJP | 9-26-05 |
| APP. BY | DATE |
| GJP | 9-26-05 |