

holder, 4-way, metal, for selector switch with 4 switch positions and for coordinate switch

product brand name	SIRIUS ACT
product designation	Holders
design of the product	holder for metal
product type designation	3SU1
manufacturer's article number	
<ul style="list-style-type: none"> <li>of the supplied holder</li> </ul>	<a href="#">3SU1550-0AA10-0AA0</a>
<b>Actuator</b>	
design of the actuating element	4-way without module
number of contact modules	0
<b>Holder</b>	
material of the holder	Metal
<b>Display</b>	
number of LED modules	0
<b>General technical data</b>	
product function positive opening	No
product component	
<ul style="list-style-type: none"> <li>diode</li> <li>lamp transformer</li> <li>light source</li> <li>series resistor</li> </ul>	No No No No
insulation voltage rated value	500 V
degree of pollution	3
surge voltage resistance rated value	6 kV
shock resistance	
<ul style="list-style-type: none"> <li>according to IEC 60068-2-27</li> <li>for railway applications according to EN 61373</li> </ul>	sinusoidal half-wave 15g / 11 ms Category 1, Class B
vibration resistance	
<ul style="list-style-type: none"> <li>according to IEC 60068-2-6</li> <li>for railway applications according to EN 61373</li> </ul>	10 ... 500 Hz: 5g Category 1, Class B
reference code according to IEC 81346-2	U
Substance Prohibitance (Date)	10/01/2014
<b>Auxiliary circuit</b>	
number of NC contacts for auxiliary contacts	0
number of NO contacts for auxiliary contacts	0
<b>Connections/ Terminals</b>	
tightening torque of the screws in the bracket	1 ... 1.2 N·m
tightening torque	
<ul style="list-style-type: none"> <li>for grounding</li> </ul>	0.8 ... 1 N·m
<b>Ambient conditions</b>	
ambient temperature	

<ul style="list-style-type: none"> <li>during operation</li> <li>during storage</li> </ul>	-25 ... +70 °C -40 ... +80 °C
environmental category during operation according to IEC 60721	3M6, 3S2, 3B2, 3C3, 3K6 (with relative air humidity of 10 ... 95%, no condensation in operation permitted)



### Environmental footprint




Environmental Product Declaration (EPD)	Yes
Global Warming Potential [CO2 eq] total	0.593 kg
Global Warming Potential [CO2 eq] during manufacturing	0.625 kg
Global Warming Potential [CO2 eq] during operation	0.235 kg
Global Warming Potential [CO2 eq] after end of life	-0.267 kg
Siemens Eco Profile (SEP)	Siemens EcoTech

### Installation/ mounting/ dimensions

<ul style="list-style-type: none"> <li>fastening method</li> <li>fastening method of modules and accessories</li> </ul>	without Front plate mounting
height	40 mm
width	40 mm
shape of the installation opening	round
installation width	40 mm
installation depth	32.1 mm
thickness of the front plate usable	1 ... 6 mm

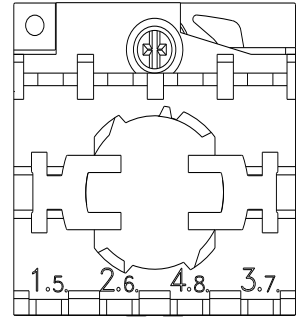
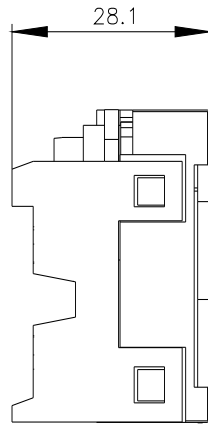
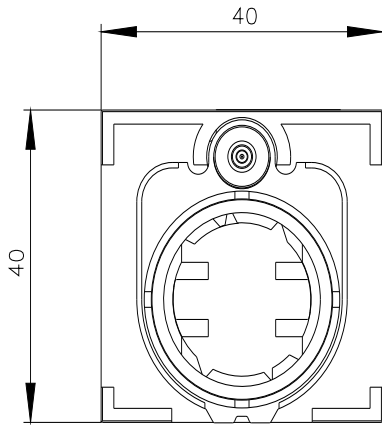
### Approvals Certificates

General Product Approval	Test Certificates	Marine / Shipping
  <a href="#">Confirmation</a>	 <a href="#">Type Test Certificates/Test Report</a>	

Marine / Shipping	other	Environment
  	<a href="#">Confirmation</a>	<a href="#">EPD Typ II/III (with life cycle assessment)</a>

### Further information

**Information on the packaging**  
<https://support.industry.siemens.com/cs/ww/en/view/109813875>  
**Information- and Downloadcenter (Catalogs, Brochures,...)**  
<https://www.siemens.com/ic10>  
**Industry Mall (Online ordering system)**  
<https://mall.industry.siemens.com/mall/en/en/Catalog/product?mlfb=3SU1550-0BA10-0AA0>  
**Cax online generator**  
<http://support.automation.siemens.com/WW/CAXorder/default.aspx?lang=en&mlfb=3SU1550-0BA10-0AA0>  
**Service&Support (Manuals, Certificates, Characteristics, FAQs,...)**  
<https://support.industry.siemens.com/cs/ww/en/ps/3SU1550-0BA10-0AA0>  
**Image database (product images, 2D dimension drawings, 3D models, device circuit diagrams, EPLAN macros, ...)**  
[http://www.automation.siemens.com/bilddb/cax\\_de.aspx?mlfb=3SU1550-0BA10-0AA0&lang=en](http://www.automation.siemens.com/bilddb/cax_de.aspx?mlfb=3SU1550-0BA10-0AA0&lang=en)



---

last modified:

2/7/2024 