

■ FEATURES

- ❖ Cellular Booster; High Gain
- ❖ Heavy-Duty 1-piece reflector, solid and rigid
- ❖ All Aluminum Rod and bar construction individually hand welded joints and double powder coated white finished
- ❖ 2G, 3G, 4G, 5G Ready. Works on all worldwide cellular bands for voice & data: LTE/CDMA/GSM/UMTS/AWS. 600MHz band included.
- ❖ All WiFi Bands, and new 5G, 600MHz & 3.5GHz spectrum
- ❖ ISM 900 & 1200MHz, SDR, plus GPS band jammer
- ❖ Military, Government, HomeLand Security Bands
- ❖ Scanner, Narrow Beam Spectrum Search & Energy Harvesting
- ❖ Sirius-XM (with avail. amplifier) Deep Fringe to Stationary Sats.
- ❖ Simple install kit with tilt/swivel mast bracket for 1.25 to 2" diameter pipe/mast
- ❖ Gain+Beamwidth can be optimized at 600-900 MHz or 4000-6500 MHz



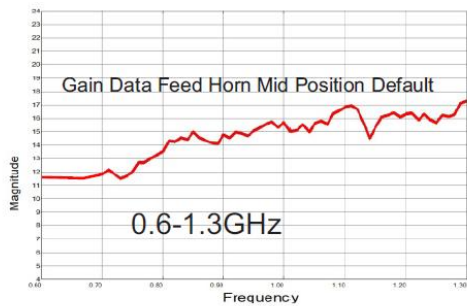
■ ELECTRICAL SPECIFICATIONS

Parameters		Value						Unit	
Frequency Range		600 ~ 6500						MHz	
Frequency (Center/Band)		752	859	920	1450	1575	1585	1785	MHz
		1920	2045	2400	2495	2600	3400	3550	
		3900	5375	5450	5500	5800	5887		
Numbers of Bands		20						-	
Returns Loss		10 / 20						dB	
Gain	Low Band	15						dBi	
	Mid Band	21						dBi	
	High Band	26						dBi	
Half-Power Beam Width	Low Band	20 Horiz, 23 Vert						°	
	Mid Band	12 Horiz, 15 Vert						°	
	High Band	7 Horiz, 9 Vert						°	
Front-to-back Ratio, min	@ AVG	20						dB	
Impedance		50						Ω	
VSWR	@ AVG	1.6:1 / 1.4:1						-	
Input Power, max		100						W	
Lightning Protection		DC Ground						-	
Polarization		Vertical or Horizontal						-	
Connector		N-Female						-	
Dimensions		32.5 / 825.5						in/mm	
Dimensions, Boxed		35x35x8.5 / 889x889x215.9						in/mm	
Antenna Weight (with bracket)		5.4 / 2.5						lb/kg	

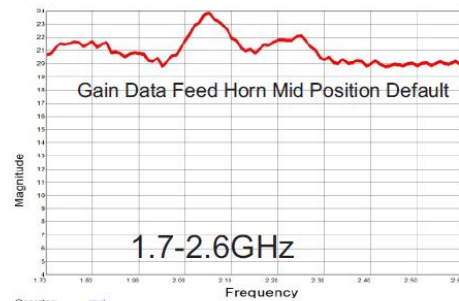
RGP-MBF4-825-17F-TA-001

Packing Weight	14 / 6.5	lb/kg
Rated Wind Velocity	150 / 240	mph/kph
Wind Load @ Rated Velo	150 / 68	lb/kg
Mounting Mast Diam	1.5-2.0 / 40-50	in/mm
Reflector Material	Welded Aluminum	-
Reflector Finish	Electrostatic Powder Coat	-
Radome Material	ASA Anti UV	-
Antenna Reflector Color	Beige-White	-
Water Resistance	IPX Weather Rated	-
Ingress Protection	IP65	-
Operating Temperature Range	-40 ~ +60	°C
	-40 ~ +140	°F

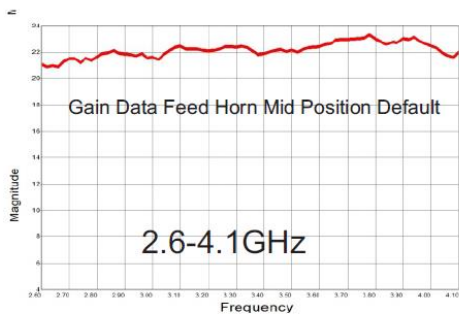
■ GAIN DATA FEED HORN MID POSITION DEFAULT



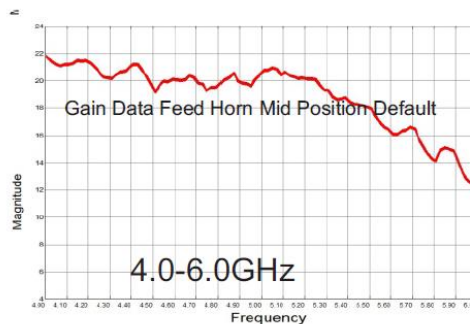
Test Channel: S21
Test Comments: protn housing and tube sample; stock position; 141 hard line with rg-319 feeder
959 Spectrum ORBIT/FR



Operator: raul
Test Channel: S21
Test Comments: 60x99 and protn housing+low 141 hardline f with rg-316 entry; stock position FH
959 Spectrum ORBIT/FR

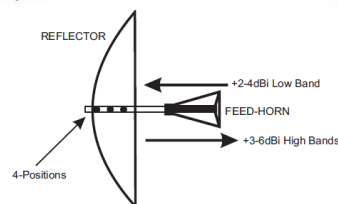


Test Channel: S21
Test Comments: LP Grid fillports parts 3" out 2.5-FGHz
959 Spectrum ORBIT/FR

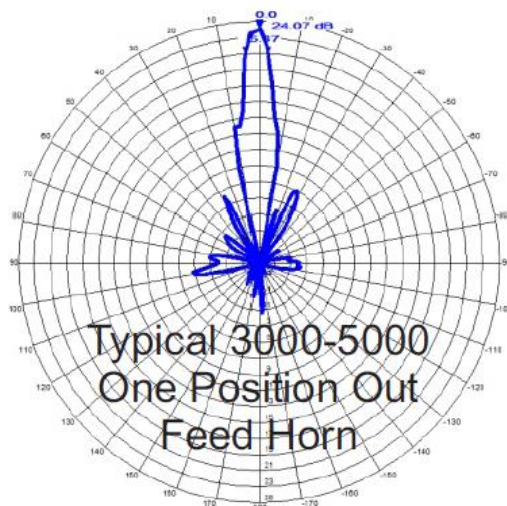
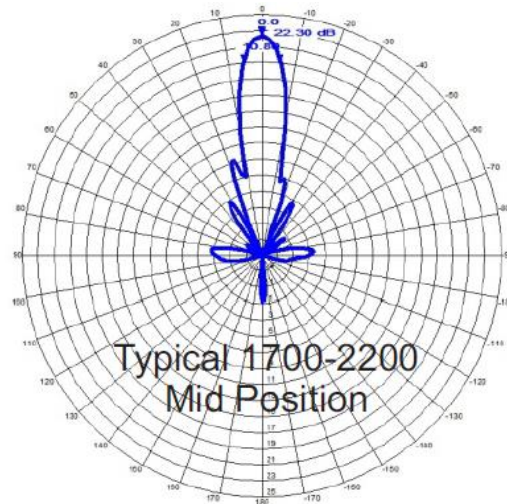
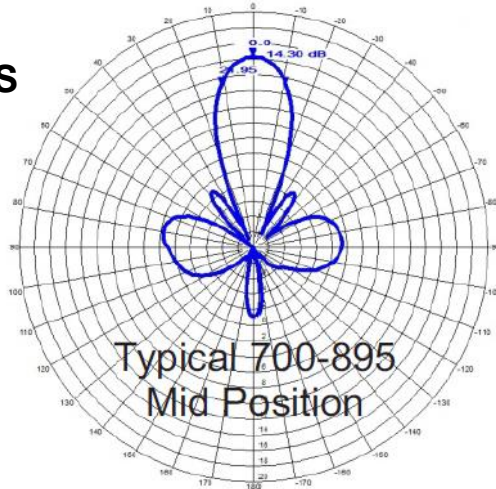


Test Channel: S21
Test Comments: COM-0665 protn tube and housing FH; stock position
959 Spectrum ORBIT/FR

Low-Band
or
High-Band
Enhancement



■ **RADIATION PATTERNS**





Fully Designed Structure to Work For Maximum Performance And Structural Rigidity Which Maintains Long Range Wide Band Solid Radio Link.



All Aluminum Rod And Bar Construction Individually Hand Welded Joints and Double Powder Coated White Finished for Years Of Use.



Rear Angle View



Rear Side View

■ INSTALLATION



Unpacking:
1. 82cm Round
2. Feed Horn
3. Hardware Kit

Antenna Finished And Installed On A Mast

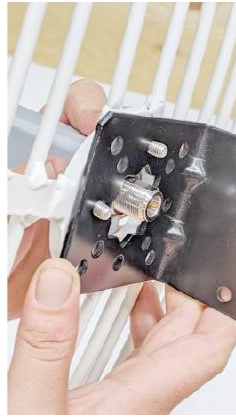


Hardware, Bracket And Connector Sealant Paste



Use: 10mm Wrenches Not Included

Position Feed Horn Assembly, Insert 2 Bolts and Hold. Place Bracket and Hold While Adding The Nuts. Add other 2 bolts and Nuts, Then Tighten all 4. Now Add The 2 Saddles and U bolts, Angle Connector, and Connect to your Coaxial Feed Cable. Add Paste Sealant to Keep Moisture Out.

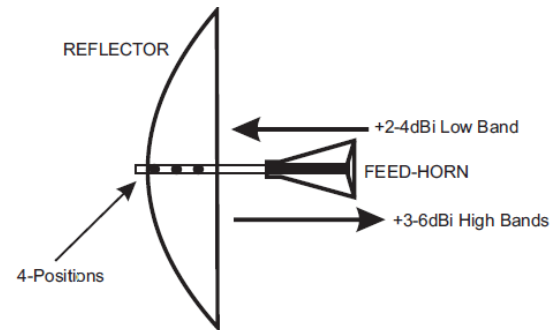


Remove Plastic Pins With A Sharp Flat Blade Screwdriver To Slide Feed Horn IN or OUT

Feed Horn Assembly Comes Set To Best Balance Cellular Uses Position. It Can Be Further Optimised:

Move Feed Horn IN For Better 600-700 MHZ and Less Gain 3 to 6.5 Ghz

Move Feed Horn OUT For Better 3 to 6.5 GHz MHZ and Less Gain 600-700 MHZ



APPROVAL

RALTRON	
DRAWN BY:	AR, March 17, 2020
APPROVED BY:	CP, March 17, 2020
REVISION:	A, Initial Release
	B, AR, April 27, 2020
	Added Installation Guide
	C, AR, July 17, 2020
	Updated the Current Revision Levels

Raltron Electronics / RAMI Technology USA, LLC, including its affiliates, employees, agents and other persons acting on its behalf (collectively Raltron/RAMI Tech), disclaim any and all liability for any errors or inaccuracies contained in this data sheet. While Raltron/RAMI Tech has made every reasonable effort ensure the accuracy of all product information, specifications and data contained herein, Raltron/RAMI Tech does not guarantee that the information is accurate, reliable or current. The product information is provided only for reference purposes only and is subject to change, correction or revision, at any time without notice. Raltron/RAMI Tech does not assume any liability arising out of an application or use of any product described herein and disclaims any warranties expressed or implied. The user of products in such applications shall assume all risks of such use and will agree to hold Raltron/RAMI Tech, harmless against all damages.

Copyright © 2016, Raltron Electronics / RAMI Technology USA, LLC. All rights reserved. No part of this document may be reproduced in any form without the prior written permission of Raltron Electronics / RAMI Technology USA, LLC.