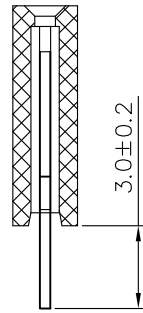
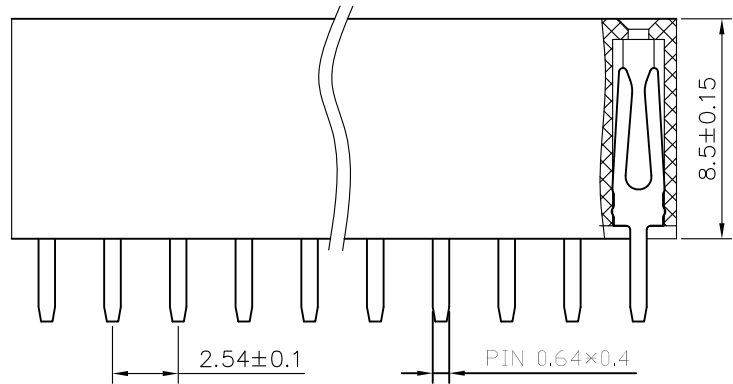


RECOMMEND P. C. B LAYOUT
PCB TOLERANCE: ±0.05 (TOP VIEW)



SPECIFICATIONS

- Current Rating: 3Amps
- Insulation Resistance: 1000MΩ Min
- Contact Resistance: 20mΩ Max
- Withstanding Voltage: AC 1000V
- Operation Temperature: -40° to+105°
- Contact Material: Brass
- Standard: 6T
- Insulator Material: Polyester
- Contact Plating: Gold Flash
- Max.Processing Temp: 200° C for30-60seconds
(260° C for5seconds)

Code Description

HC-2.54-FH-1-XX-85-S-32-25-G0-Y-A
(1) (2) (3) (4) (5) (6) (7) (8) (9) (10) (11)

- (1) Pin Spacing: 254=2.54mm
- (2) Product Name: FH=Female Header
- (3) No. of Rows: 1=Single Row ;2=Dual Row
- (4) No. of Pins Per Row: 1~40
- (5) Insulator Material Height: 50=5.0mm;85=8.5mm
- (6) Connector Type: S=Straight;R=Right Angle;M=SMT
- (7) Connector Material Length: 30=3.0mm;32=3.2mm
- (8) Insulator Material Width: 50=5.0mm;55=5.5mm
- (9) Contact Plating: G0=Gold Flash; AU15=Au 1.5u"
- (10) Connector Material Type: U=U Type;Y=Y Type
- (11) Insulator Material Option:
A=BK-PBT;B=BK-PA6T;C=BK-PA46;D=KB-LCP;S=Special

深圳市虹电子有限公司

No. of	DIM. A	DIM. B	No. of	DIM. A	DIM. B	No. of	DIM. A	DIM. B	No. of	DIM. A	DIM. B
1	0.00	2.54	11	25.40	27.94	21	50.80	53.34	31	76.20	78.74
2	2.54	5.08	12	27.94	30.48	22	53.34	55.88	32	78.74	81.28
3	5.08	7.62	13	30.48	33.02	23	55.88	58.42	33	81.28	83.82
4	7.62	10.16	14	33.02	35.56	24	58.42	60.96	34	83.82	86.36
5	10.16	12.70	15	35.56	38.10	25	60.96	63.50	35	86.36	88.90
6	12.70	15.24	16	38.10	40.64	26	63.50	66.04	36	88.90	91.44
7	15.24	17.78	17	40.64	43.18	27	66.04	68.58	37	91.44	93.98
8	17.78	20.32	18	43.18	45.72	28	68.58	71.12	38	93.98	96.52
9	20.32	22.86	19	45.72	48.26	29	71.12	73.66	39	96.52	99.06
10	22.86	25.40	20	48.26	50.80	30	73.66	76.20	40	99.06	101.60

UNLESS OTHERWISE SPECIFIED TOLERANCE

- X : ±0.3 X° : ±5°
- X.X : ±0.2 X.X° : ±1°
- X.XX : ±0.1 X.XX° : ±0.5°

DRAWN NAME: 2.54FH 1xnPin H8.5 DIP PC3.0

SIZE	A4	SCALE	N:1	PROUCT NO.	HC-PM254-1x06-8.5HZ
REV	A	UNIT	mm	PROJECT	PAGE 1/1

CHECKED: LU JING NUAN 19/12/14 CHECKED: / / APPROVED: / /