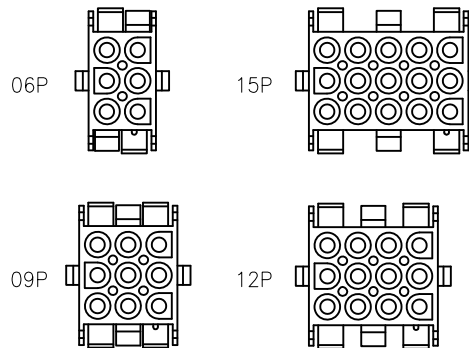
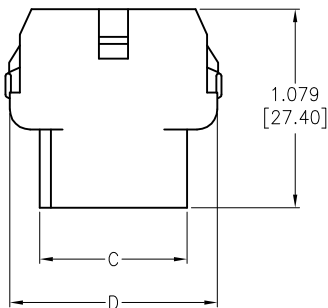
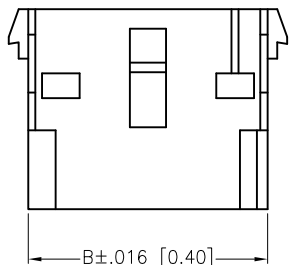
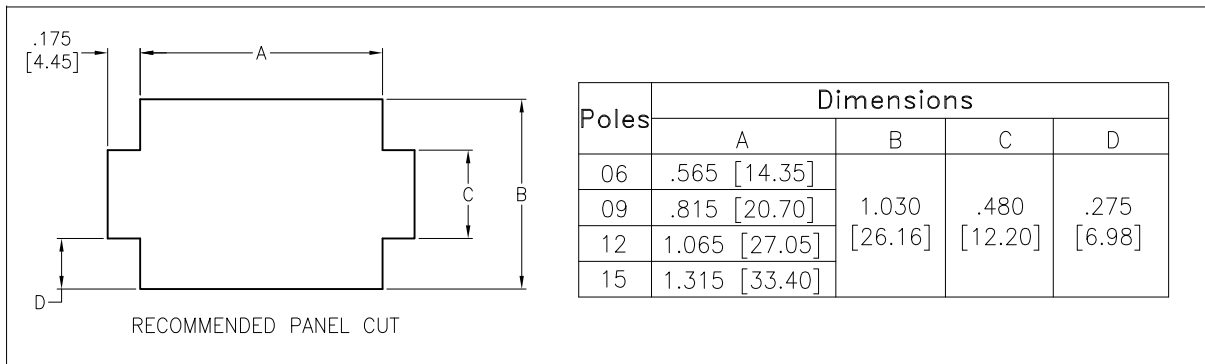
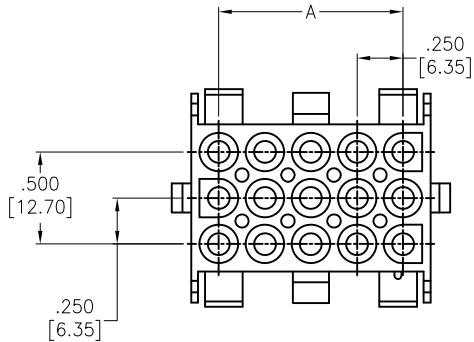


APPROVED: _____
 DATE: _____ TITLE: _____

Rev	AWO #	Description	Date	Appr
-		RELEASED	2/21/20	



Poles	Dimensions			
	A	B	C	D
06	.250 [6.35]	.550 [13.97]	.799 [20.30]	1.128 [28.65]
09	.500 [12.70]	.807 [20.50]	.807 [20.50]	1.130 [28.70]
12	.750 [19.05]	1.059 [26.90]	.807 [20.50]	1.134 [28.80]
15	1.000 [25.40]	1.311 [33.30]	.803 [20.40]	1.134 [28.80]

SPECIFICATIONS:

Material:
 Insulator: Nylon66, rated UL 94V-2
 Insulator color: Natural
 Electrical:
 Current rating: 06~15P: 9 Amp max (With UL1007, 16AWG)
 Contact resistance: 20 mohms max
 Insulation resistance: 1,000 Mohms min
 Dielectric withstanding voltage: 2,900 VAC for 1 minute
 Temperature Rating:
 -40°C to +105°C
 Environmental:
 Lead free, RoHS compliant.



UNLESS OTHERWISE SPECIFIED ALL DIMENSIONS ARE INCHES [MM] TOLERANCES: EXCEPT AS NOTED INCHES HOLES .X ± .10 Ø.X ± .10 .XX ± .020 Ø.XX ± .015 .XXX ± .015 Ø.XXX ± .010		ADAM TECH INTERCONNECTS 909 Rahway Avenue, Union, NJ 07083 Phone: 908-687-5000 Fax: 908-687-5710	
APPROVALS DRAWN LH 2/21/20 CHECKED AT1 2/21/20 APPROVED		DATE DATE DATE	
TITLE .250 [6.35MM] PITCH CONNECTOR, HOUSINGS, FEMALE, VERTICAL		SIZE X	PART NO. DME-F2-XX-SQ
REF: S00124T		SCALE: NTS	SHEET 1 OF 1

6 5 4 3 2 1

D

D

C

C

B

B

A

A

6 5 4 3 2 1