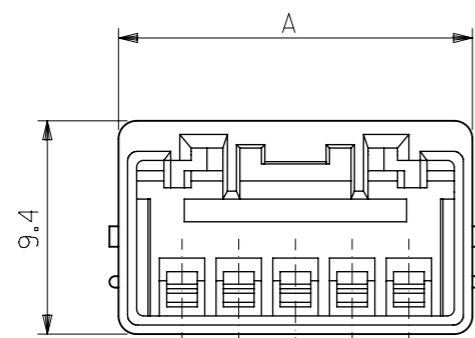
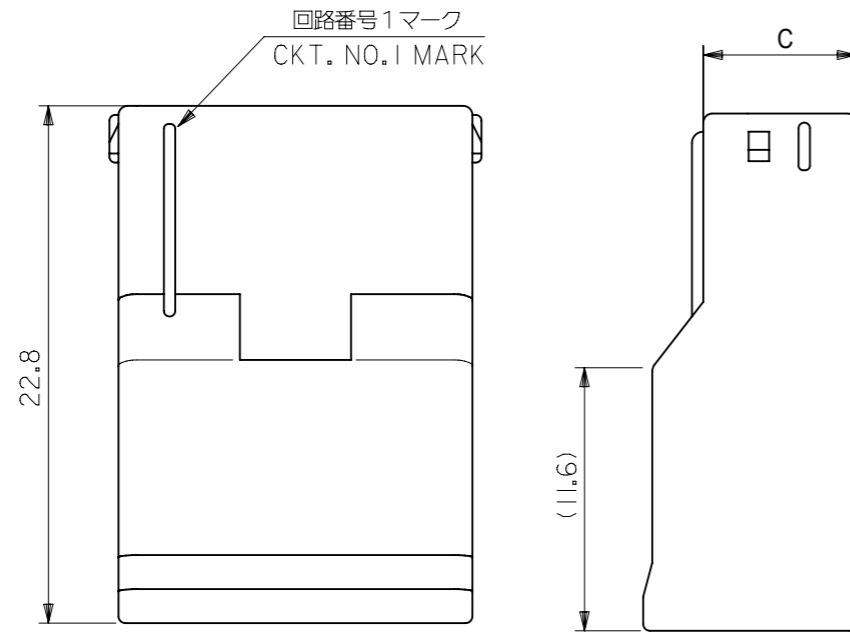
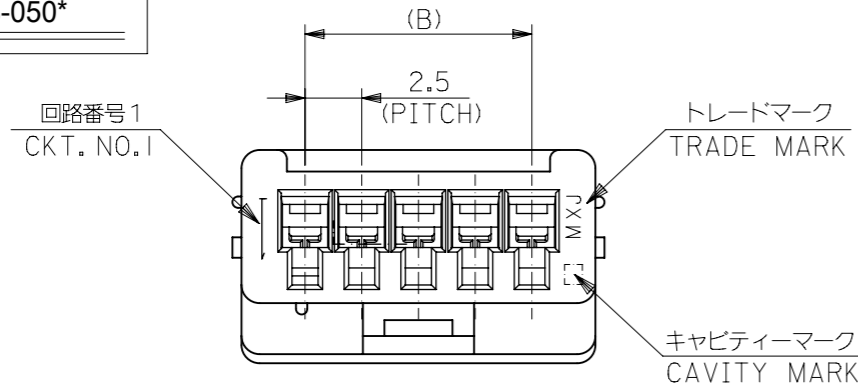
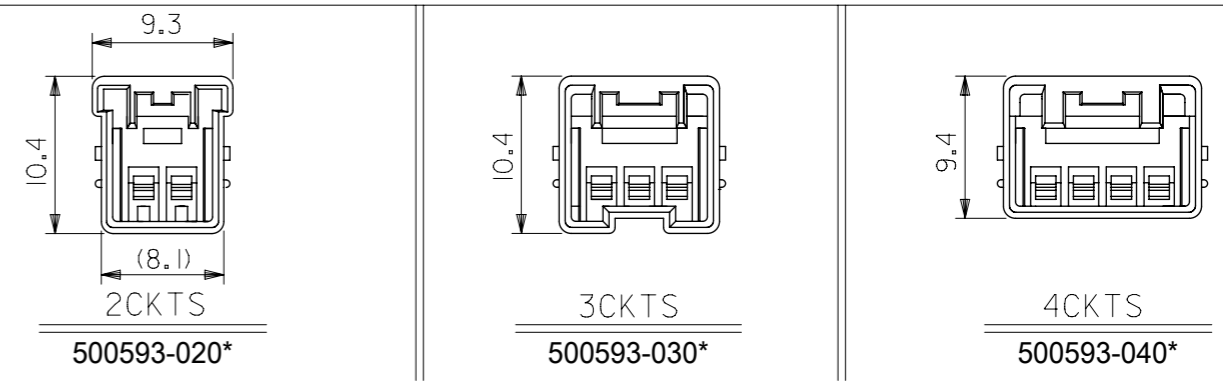


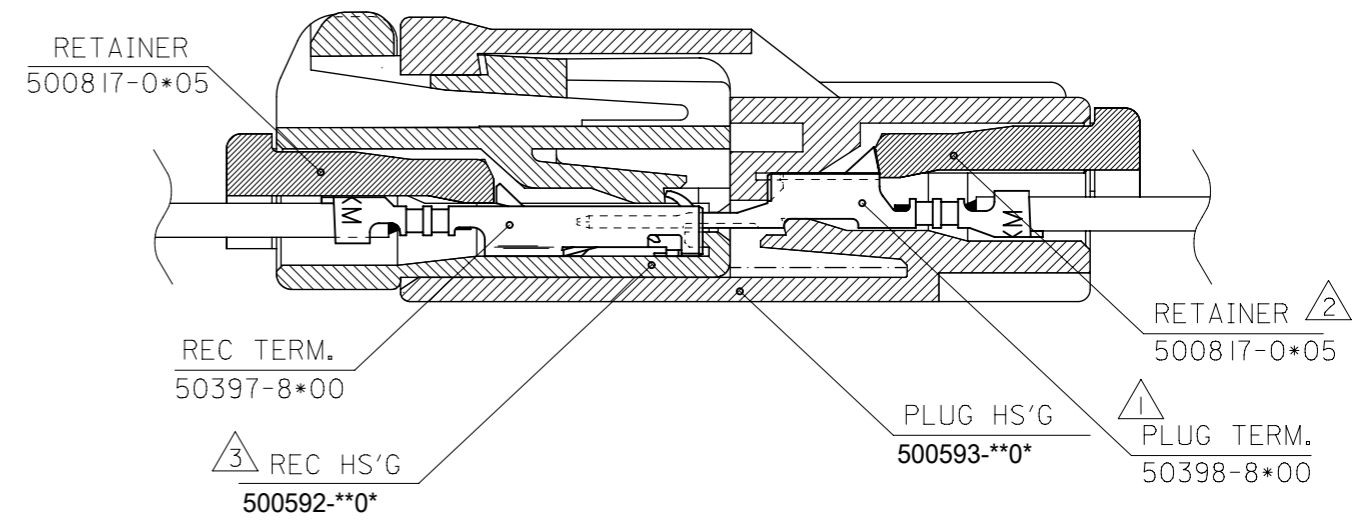
SHAPE OF
500593-050*



4極以下の極数レイアウト図
LAYOUT OF 2/3/4CKTS.



ターミナル装着状態図
TERMINAL ASSEMBLY DRAWING



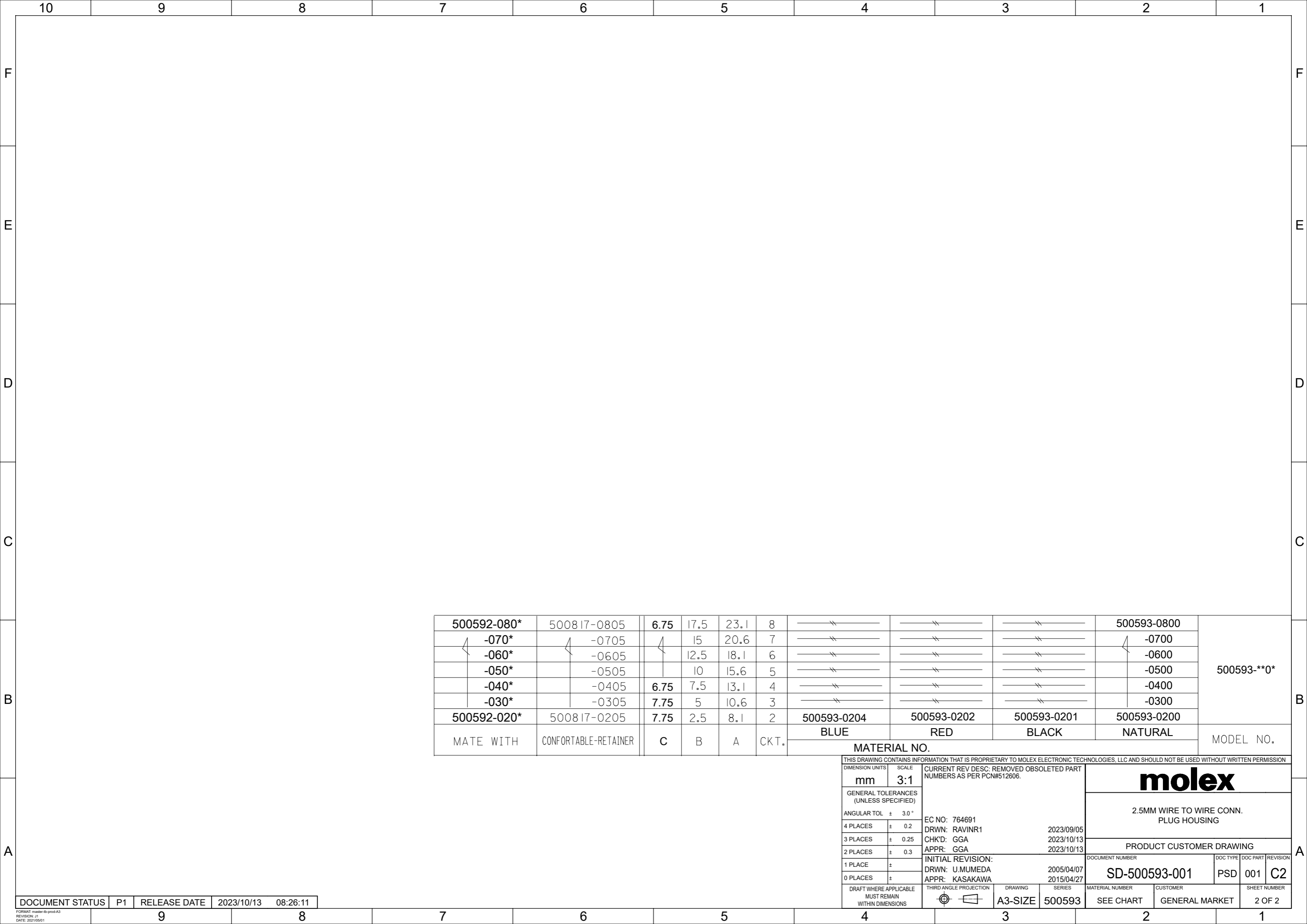
- 注記
NOTES
- ① 適合ターミナル : 50398シリーズ
APPLICABLE TERMINAL : 50398 SERIES
 - ② 適合リテーナー : 500817シリーズ
APPLICABLE RETAINER : 500817 SERIES
 - ③ 嵌合相手 : 500592シリーズ
MATE WITH : 500592 SERIES
 - 4. 材質 : PBT (UL94V-0)
MATERIAL : PBT(UL94V-0)

5. MATERIAL NO.は以下の内容を示す。
MATERIAL NO. :


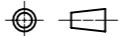
500593-**0*	色
極数	COLOR
CKT	0: 自然色 NATURAL
	1: 黒 BLACK
	2: 赤 RED
	3: 黄色 YELLOW
	4: 青 BLUE
	6: 緑 GREEN

500593-**0* MODEL NO.

THIS DRAWING CONTAINS INFORMATION THAT IS PROPRIETARY TO MOLEX ELECTRONIC TECHNOLOGIES, LLC AND SHOULD NOT BE USED WITHOUT WRITTEN PERMISSION										
DIMENSION UNITS	SCALE	CURRENT REV DESC: REMOVED OBSOLETE PART NUMBERS AS PER PCN#512606.								
mm	1:1	<p style="text-align: center;">molex</p> <p style="text-align: center;">2.5MM WIRE TO WIRE CONN. PLUG HOUSING</p> <p style="text-align: center;">PRODUCT CUSTOMER DRAWING</p>								
GENERAL TOLERANCES (UNLESS SPECIFIED)										
ANGULAR TOL	± 3.0 °	EC NO: 764691								
4 PLACES	± 0.2	DRWN: RAVINR1	2023/09/05							
3 PLACES	± 0.25	CHK'D: GGA	2023/10/13							
2 PLACES	± 0.3	APPR: GGA	2023/10/13							
1 PLACE	±	INITIAL REVISION:								
0 PLACES	±	DRWN: U.MUMEDA	2005/04/07							
		APPR: KASAKAWA	2015/04/27							
DRAFT WHERE APPLICABLE MUST REMAIN WITHIN DIMENSIONS		THIRD ANGLE PROJECTION	DRAWING	SERIES	MATERIAL NUMBER	CUSTOMER	DOCUMENT NUMBER	DOC TYPE	DOC PART	REVISION
			A3-SIZE	500593	SEE CHART	GENERAL MARKET	SD-500593-001	PSD	001	C2
										SHEET NUMBER
										1 OF 2



500592-080*	500817-0805	6.75	17.5	23.1	8	---	---	---	500593-0800	500593-***
└ -070*	└ -0705	└	15	20.6	7	---	---	---	└ -0700	
└ -060*	└ -0605	└	12.5	18.1	6	---	---	---	└ -0600	
└ -050*	└ -0505		10	15.6	5	---	---	---	└ -0500	
└ -040*	└ -0405	6.75	7.5	13.1	4	---	---	---	└ -0400	
└ -030*	└ -0305	7.75	5	10.6	3	---	---	---	└ -0300	
500592-020*	500817-0205	7.75	2.5	8.1	2	500593-0204	500593-0202	500593-0201	500593-0200	MODEL NO.
MATE WITH	CONFORTABLE-RETAINER	C	B	A	CKT.	BLUE	RED	BLACK	NATURAL	

THIS DRAWING CONTAINS INFORMATION THAT IS PROPRIETARY TO MOLEX ELECTRONIC TECHNOLOGIES, LLC AND SHOULD NOT BE USED WITHOUT WRITTEN PERMISSION									
DIMENSION UNITS	SCALE	CURRENT REV DESC: REMOVED OBSOLETE PART NUMBERS AS PER PCN#512606.							
mm	3:1	 2.5MM WIRE TO WIRE CONN. PLUG HOUSING PRODUCT CUSTOMER DRAWING							
GENERAL TOLERANCES (UNLESS SPECIFIED)									
ANGULAR TOL	± 3.0 °	EC NO: 764691 DRWN: RAVINR1 2023/09/05 CHK'D: GGA 2023/10/13 APPR: GGA 2023/10/13							
4 PLACES	± 0.2	INITIAL REVISION: DRWN: U.MUMEDA 2005/04/07 APPR: KASAKAWA 2015/04/27							
3 PLACES	± 0.25								
2 PLACES	± 0.3	DOCUMENT NUMBER		DOC TYPE		DOC PART		REVISION	
1 PLACE	±	SD-500593-001		PSD		001		C2	
0 PLACES	±	MATERIAL NUMBER		CUSTOMER		SHEET NUMBER			
DRAFT WHERE APPLICABLE MUST REMAIN WITHIN DIMENSIONS		THIRD ANGLE PROJECTION		DRAWING		SERIES		MATERIAL NUMBER	
				A3-SIZE		500593		SEE CHART	
		GENERAL MARKET		2 OF 2					

DOCUMENT STATUS	P1	RELEASE DATE	2023/10/13	08:26:11
-----------------	----	--------------	------------	----------