

1-929504-1 ✓ ACTIVE

AMP | Junior Power Timer

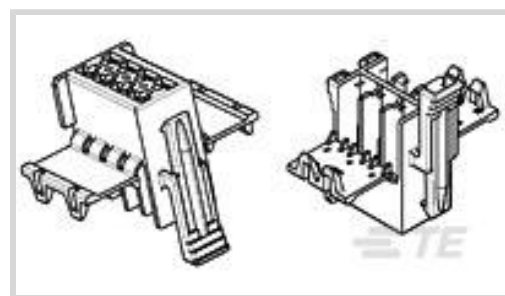
TE Internal #: 1-929504-1

Housing for Female Terminals, Wire-to-Wire, 4 Position, .197 in [5 mm] Centerline, Natural, Wire & Cable, Power, Junior Power Timer

[View on TE.com >](#)



Connectors > Automotive Connectors > Automotive Housings > Timer Connector Housing



Connector System: **Wire-to-Wire**

Number of Positions: **4**

Connector & Housing Type: **Housing for Female Terminals**

Centerline (Pitch): **5 mm [.197 in]**

Sealable: **No**

[All Timer Connector Housing \(525\)](#)

Features

Product Type Features

Mixed & Hybrid Connector	No
Connector Shape	Rectangular
Connector System	Wire-to-Wire
Connector & Housing Type	Housing for Female Terminals
Sealable	No
Connector & Contact Terminates To	Wire & Cable
Primary Locking Feature	Integrated in Housing

Configuration Features

Number of Positions	4
Number of Rows	2

Body Features

Cable Exit Angle	180°
Primary Product Color	Natural

Contact Features

Contact Size	2.8mm
Contact Type	Receptacle
Mating Tab Width	3 mm [.118 in]



Mechanical Attachment

Terminal Position Assurance	No
Strain Relief	Without
Mating Alignment Type	Polarized
Mating Alignment	With
Connector Mounting Type	Cable Mount (Free-Hanging)

Housing Features

Housing Material	PBT
Centerline (Pitch)	5 mm [.197 in]

Dimensions

Connector Height	29.5 mm [1.16 in]
Product Width	16 mm [.629 in]
Product Length	18.5 mm [.728 in]
Row-to-Row Spacing	5.6 mm [.22 in]

Usage Conditions

Operating Temperature (Max)	100 °C [266 °F]
Operating Temperature Range	-40 – 100 °C [-40 – 266 °F]

Operation/Application

Circuit Application	Power
---------------------	-------

Packaging Features

Packaging Quantity	3000
Packaging Method	Carton

Other

Serviceable	No
Connector Position Assurance Capable	No

Product Compliance

[For compliance documentation, visit the product page on TE.com>](#)

EU RoHS Directive 2011/65/EU	Compliant
EU ELV Directive 2000/53/EC	Compliant
China RoHS 2 Directive MIIT Order No 32, 2016	No Restricted Materials Above Threshold
EU REACH Regulation (EC) No. 1907/2006	



Current ECHA Candidate List: JUNE 2023 (235)
 Candidate List Declared Against: JUNE 2023 (235)
 Does not contain REACH SVHC

Halogen Content	Not Low Halogen - contains Br or Cl > 900 ppm.
-----------------	--

Solder Process Capability	Not applicable for solder process capability
---------------------------	--

Product Compliance Disclaimer

This information is provided based on reasonable inquiry of our suppliers and represents our current actual knowledge based on the information they provided. This information is subject to change. The part numbers that TE has identified as EU RoHS compliant have a maximum concentration of 0.1% by weight in homogenous materials for lead, hexavalent chromium, mercury, PBB, PBDE, DBP, BBP, DEHP, DIBP, and 0.01% for cadmium, or qualify for an exemption to these limits as defined in the Annexes of Directive 2011/65/EU (RoHS2). Finished electrical and electronic equipment products will be CE marked as required by Directive 2011/65/EU. Components may not be CE marked. Additionally, the part numbers that TE has identified as EU ELV compliant have a maximum concentration of 0.1% by weight in homogenous materials for lead, hexavalent chromium, and mercury, and 0.01% for cadmium, or qualify for an exemption to these limits as defined in the Annexes of Directive 2000/53/EC (ELV). Regarding the REACH Regulation, the information TE provides on SVHC in articles for this part number is based on the latest European Chemicals Agency (ECHA) 'Guidance on requirements for substances in articles' posted at this URL: <https://echa.europa.eu/guidance-documents/guidance-on-reach>

Compatible Parts



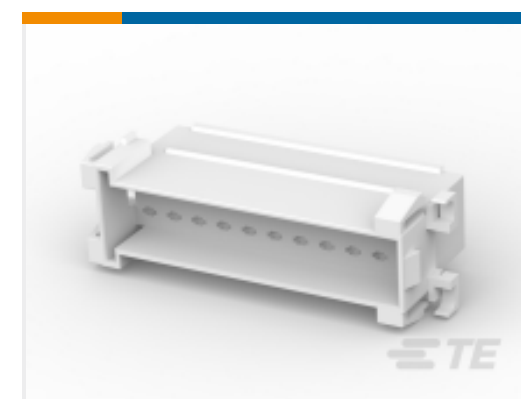
TE Part # CAT-T4827-CH8172
 Timer Connector Housing



TE Part # CAT-LMPH9507
 Low & Medium Power Header



TE Part # CAT-T4827-T273
 TIMER, RECEPTACLE AND TAB



TE Part # 1-929505-7
 TAB HSG .110 (2.8 MM) HSG TAB



TE Part # 1-929505-1
 TAB HSG .110 (2.8 MM) HSG TAB



TE Part # 1-929505-2
 TAB HSG .110 (2.8 MM) HSG TAB



TE Part # 1-929505-3
 TAB HSG .110 (2.8 MM) HSG TAB



TE Part # 1-929505-4
 TAB HSG .110 (2.8 MM) HSG TAB



TE Part # 1-929505-6
FF FLA-STE-GEH2X 9P

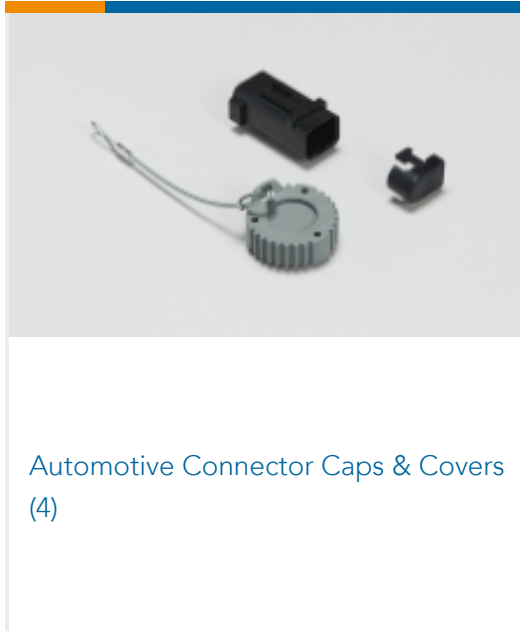


TE Part # 1-927768-1
JPT REC 2.8 Contact SRC Au

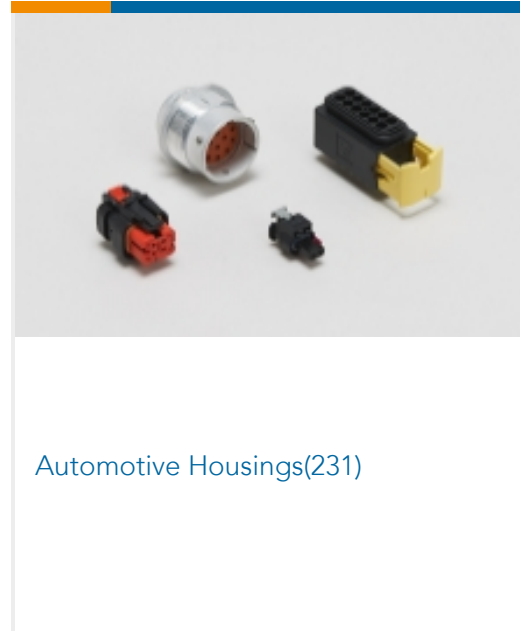


TE Part # 1-929505-5
FF TAB HOUSING 2X 7P

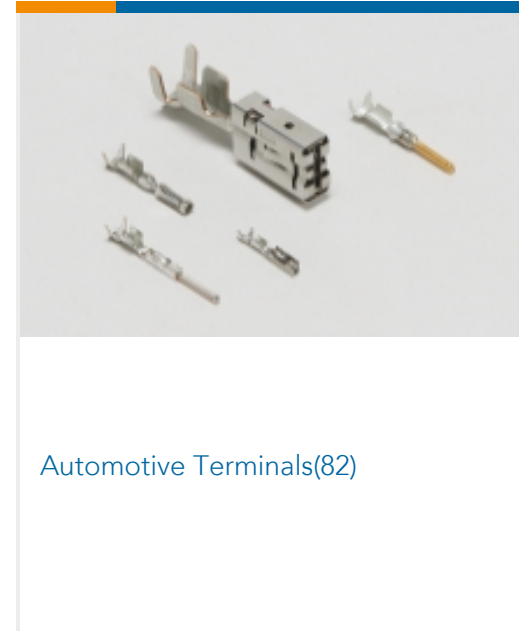
Also in the Series | Junior Power Timer



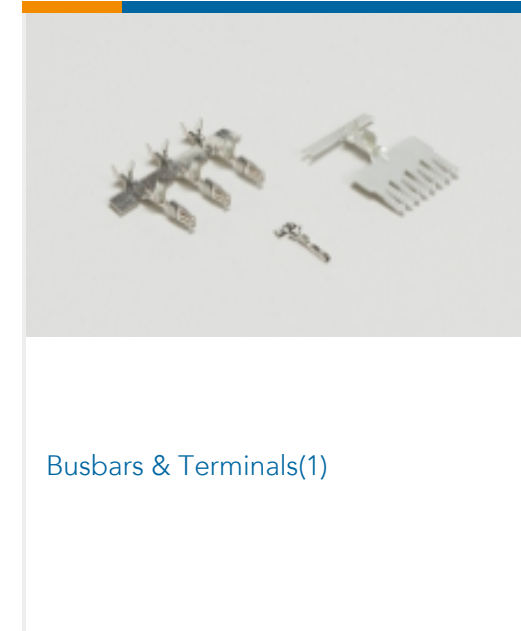
Automotive Connector Caps & Covers (4)



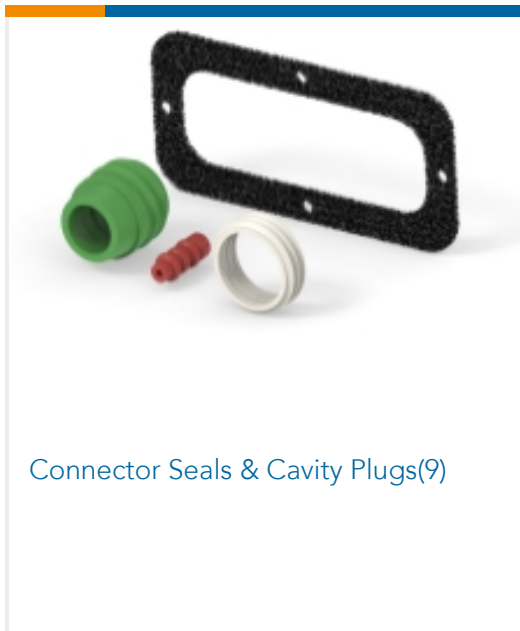
Automotive Housings(231)



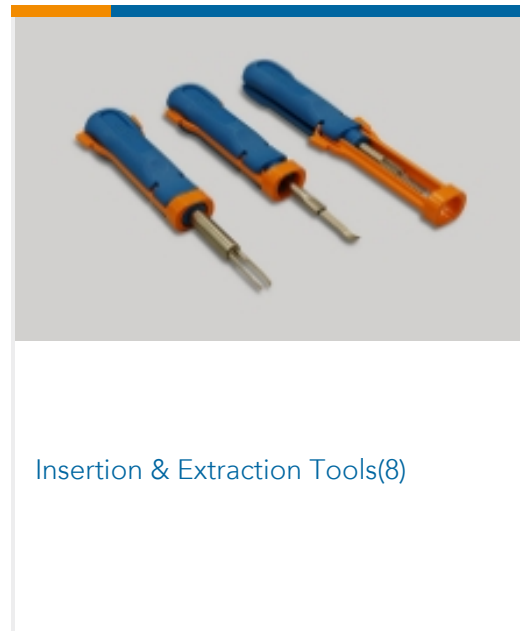
Automotive Terminals(82)



Busbars & Terminals(1)



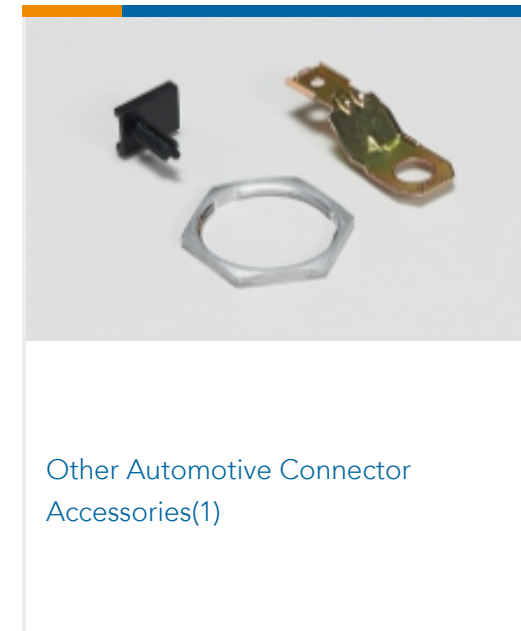
Connector Seals & Cavity Plugs(9)



Insertion & Extraction Tools(8)



Module Components(3)



Other Automotive Connector Accessories(1)

Customers Also Bought



TE Part #1-967624-3
Timer Connector Housing



TE Part #881719-2
FF 110 TAB 0.5-1.0 MM2 TPBR



TE Part #626094-2
FF .250 REC 0.5 /1.0 MM2 0.32X19.3 TPBR



TE Part #880634-5
FF 110 REC 0.5-1.0 MM2 0.25 X 12.3 PTPBR



TE Part #K1041531
Switch guard 08-0-0-01 910



Documents

Product Drawings

[2X 2P JUN-POW-TIMGH](#)

English

CAD Files

Customer View Model

[ENG_CVM_CVM_1-929504-1_N.2d_dxf.zip](#)

English

3D PDF

3D

Customer View Model

[ENG_CVM_CVM_1-929504-1_N.3d_igs.zip](#)

English

Customer View Model

[ENG_CVM_CVM_1-929504-1_N.3d_stp.zip](#)

English

By downloading the CAD file I accept and agree to the [Terms and Conditions](#) of use.

Datasheets & Catalog Pages

[Timer Interconnection System](#)

English