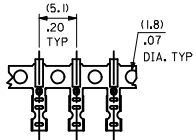
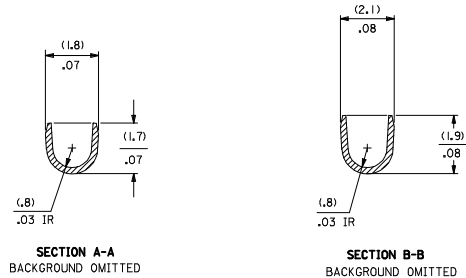
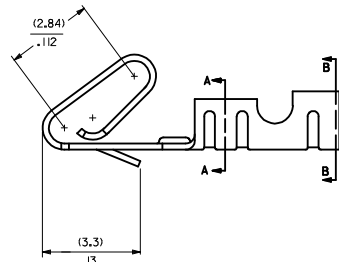
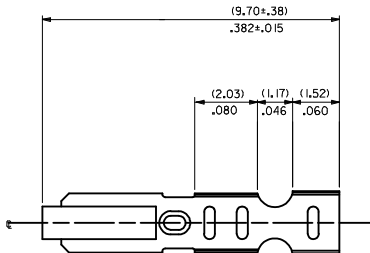
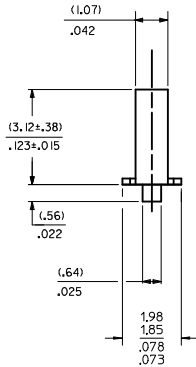
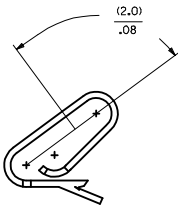


CARRIER VIEW



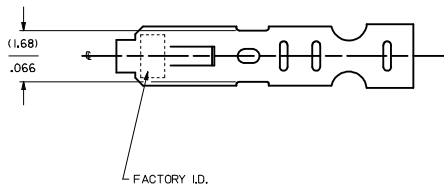
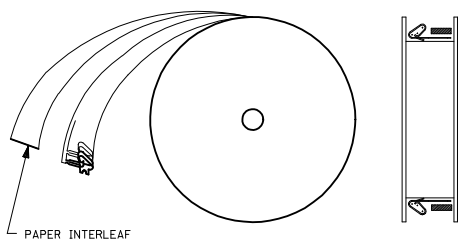
SELECT GOLD LOCATION



SECTION A-A
BACKGROUND OMITTED

SECTION B-B
BACKGROUND OMITTED

WINDING DETAIL A



NOTES:

- MATERIAL:
10.20/.008 THICK PHOS BRONZE
- FINISH:
222 - OVERALL MATTE TIN: (0.00254)/.000100 MIN. TIN OVER (0.00127)/.000050 MIN NICKEL
P909 - OVERALL HOT TIN DIP: (0.00254)/.000100 MIN.
231 - SELECT GOLD: (0.00127)/.000050 MIN.
SELECT MATTE TIN: (0.00254)/.000100 MIN.
OVERALL NICKEL UNDERPLATE: (0.00127)/.000050 MIN.
550 - SELECT GOLD: (0.00038)/.000015 MIN.
OVERALL GOLD FLASH: (0.00005)/.000002 MIN.
OVERALL NICKEL UNDERPLATE: (0.00076)/.000030 MIN.
555- SELECT GOLD (0.00038)/.000015 MIN.
OVERALL NICKEL UNDERPLATE: (0.00076)/.000030
558 - SELECT GOLD: (0.00076)/.000030 MIN.
OVERALL GOLD FLASH: (0.00005)/.000002 MIN.
OVERALL NICKEL UNDERPLATE: (0.00127)/.000050 MIN.
561- SELECT GOLD (0.00076)/.000030 MIN.
OVERALL NICKEL UNDERPLATE: (0.00127)/.000050
- PRODUCT SPEC: PS-10-07
- PACKAGING SPECIFICATION: LOOSE TERMINALS: PER PK-2759-001
CHAIN FORM TERMINALS: PER PK-6459-001
- CRIMP IS FOR 22-30 GA WIRE WITH (1.57)/.062 DIA INSULATION MAX.
- INSERTION FORCE OF TERMINAL INTO (2.54)/.100 CENTERLINE CONNECTOR IS 2.5 LBS. MAX
- TERMINAL RETENTION IN HOUSING IS 26.7N / 6LBS MIN. WHEN PULLED AT THE RATE OF (25.4MM)/ 1 INCH PER MINUTE.
- DIMENSIONS GIVEN ACROSS CENTERLINES ARE SYMMETRICAL ABOUT THOSE CENTERLINES WITHIN HALF THE TOTAL TOLERANCE.
- THIS PART CONFORMS TO CLASS B REQUIREMENTS OF COSMETIC SPECIFICATION PS-45499-002

6459-(****)*
FORM
L=LOOSE
A=CHAIN PER DETAIL A
PLATING
SEE NOTE 2

ADD PK-6459-001 EC NO. UCP2014-0151 DRAWN BY DRWN:KIPPER 2013/07/18 CHKD:ANDERSON 2013/07/18 APPR:FSM TH 2013/07/24 REV DESCRIPTION	QUALITY SYMBOLS	GENERAL TOLERANCES (UNLESS SPECIFIED)	DIMENSION STYLE	SCALE	DESIGN UNITS	THIRD ANGLE PROJECTION	
	∇=0 ∇=0 ∇=0	4 PLACES ± --- ± --- 3 PLACES ± --- ± .010 2 PLACES ± 0.25 ± .014 1 PLACE ± 0.36 ± --- 0 PLACE ± --- ± ---	mm INCH	MM/IN	DATE	INCH	DATE DATE DATE
	ANGULAR ±1/2° DRAFT WHERE APPLICABLE MUST REMAIN WITHIN DIMENSIONS	MATERIAL NO. SEE CHART	DRAWN BY SAMIEC CHECKED BY PATEL APPROVED BY FSMITH DATE 2012/03/20	TITLE KK (2.54)/.100 CRIMP TERMINAL, 22-30 GA WIRE SAME AS 2759 EXCEPT MATL	DOCUMENT NO. SD-6459	SHEET NO. 1 OF 2	molex
	THIS DRAWING CONTAINS INFORMATION THAT IS PROPRIETARY TO MOLEX INCORPORATED AND SHOULD NOT BE USED WITHOUT WRITTEN PERMISSION						

6459-(***)*

PART NO.	ENG. NO.
08-52-0101	6459-(P909)
08-52-0123	6459-(P909)L
08-65-0801	6459-(561)
	6459-(561)L
08-52-0118	6459-(222)
	6459-(222)L
08-65-0811	6459-(558)
08-65-0812	6459-(558)L
08-65-0815	6459-(555)
08-65-0816	6459-(555)L
08-65-0813	6459-(550)
08-65-0814	6459-(550)L
08-65-0817	6459-(231)
08-65-0818	6459-(231)L

SEE SHEET 1 EEC NO: UCP2014-0151 DRAWN BY: 2013/07/18 CHKD: BANDERSON 2013/07/18 APPR: FSMITH 2013/07/24 H1 REV	QUALITY SYMBOLS ∇=0 ∇=0 ∇=0	GENERAL TOLERANCES (UNLESS SPECIFIED) <table border="1"> <thead> <tr> <th></th> <th>mm</th> <th>INCH</th> </tr> </thead> <tbody> <tr> <td>4 PLACES</td> <td>±.005</td> <td>±.0005</td> </tr> <tr> <td>3 PLACES</td> <td>±.010</td> <td>±.0010</td> </tr> <tr> <td>2 PLACES</td> <td>±.025</td> <td>±.0025</td> </tr> <tr> <td>1 PLACE</td> <td>±.036</td> <td>±.0036</td> </tr> <tr> <td>0 PLACE</td> <td>±.050</td> <td>±.0050</td> </tr> </tbody> </table>		mm	INCH	4 PLACES	±.005	±.0005	3 PLACES	±.010	±.0010	2 PLACES	±.025	±.0025	1 PLACE	±.036	±.0036	0 PLACE	±.050	±.0050	DIMENSION STYLE MM/IN	SCALE 1:1	DESIGN UNITS INCH	THIRD ANGLE PROJECTION
		mm	INCH																					
	4 PLACES	±.005	±.0005																					
	3 PLACES	±.010	±.0010																					
2 PLACES	±.025	±.0025																						
1 PLACE	±.036	±.0036																						
0 PLACE	±.050	±.0050																						
DRAWN BY: SAMIEC DATE: 01/21/92 CHECKED BY: PATEL DATE: 01/21/92 APPROVED BY: FSMITH DATE: 2012/03/20		MATERIAL NO. SEE CHART		DOCUMENT NO. SD-6459		SHEET NO. 2 OF 2																		
DRAFT WHERE APPLICABLE MUST REMAIN WITHIN DIMENSIONS																								
THIS DRAWING CONTAINS INFORMATION THAT IS PROPRIETARY TO MOLEX INCORPORATED AND SHOULD NOT BE USED WITHOUT WRITTEN PERMISSION																								