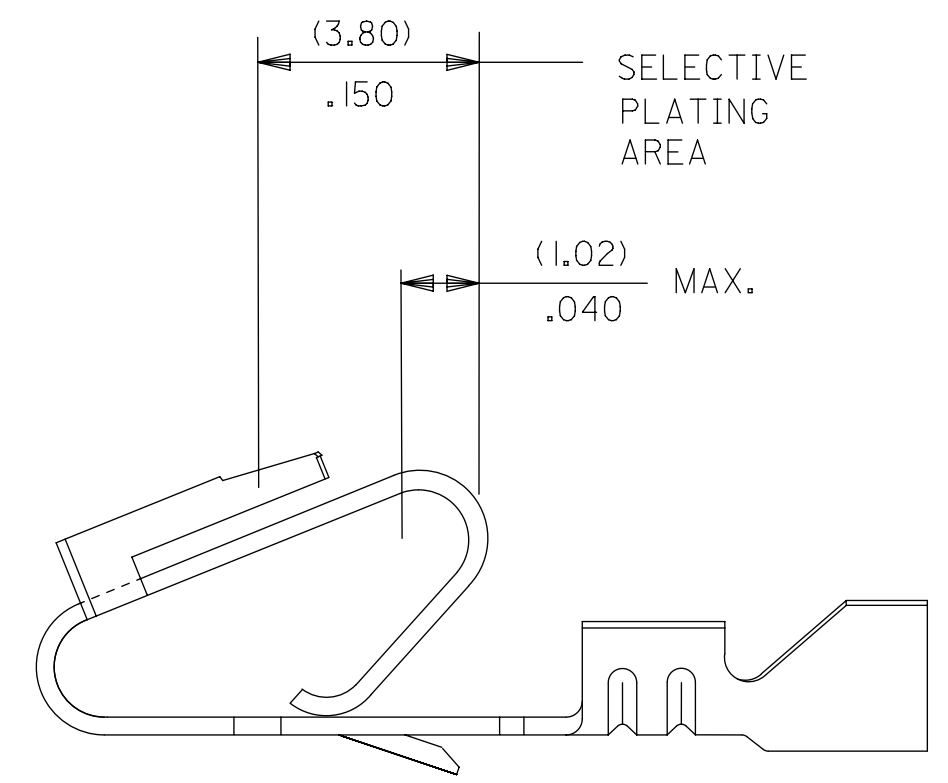
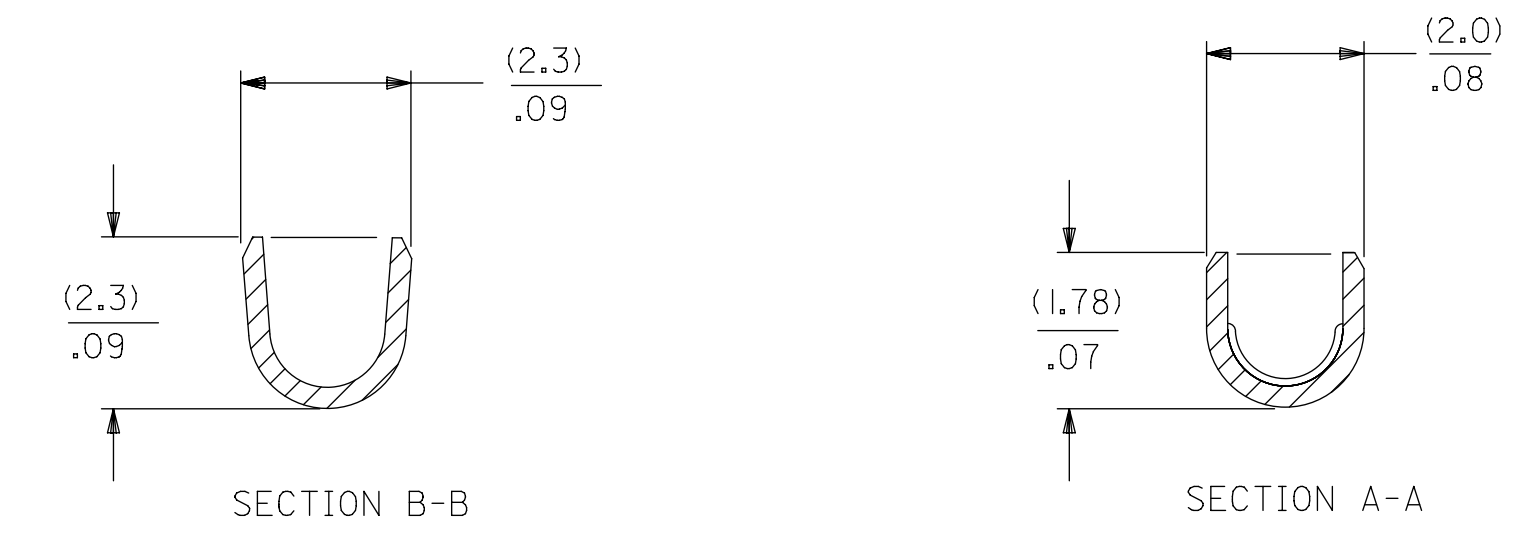
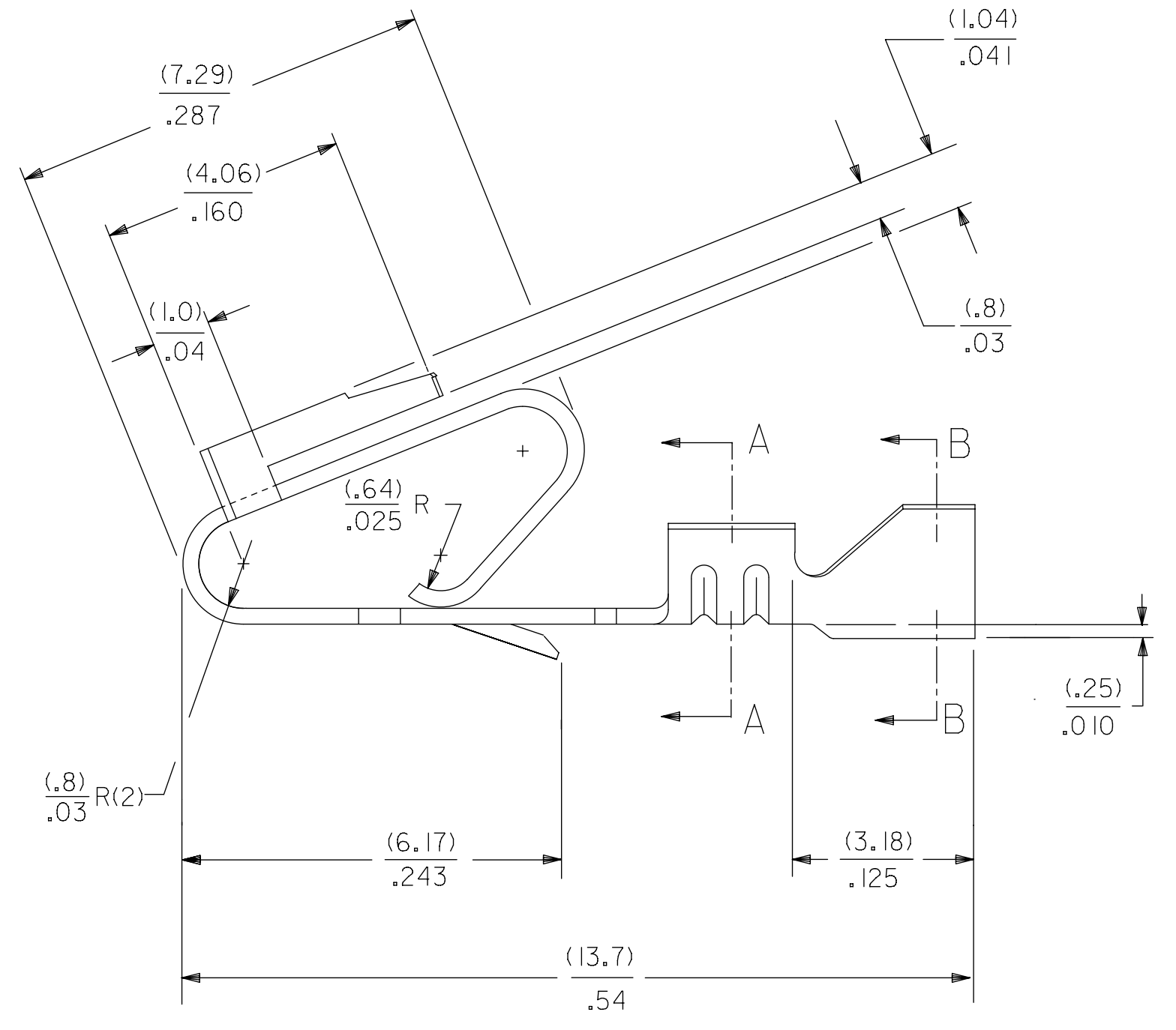
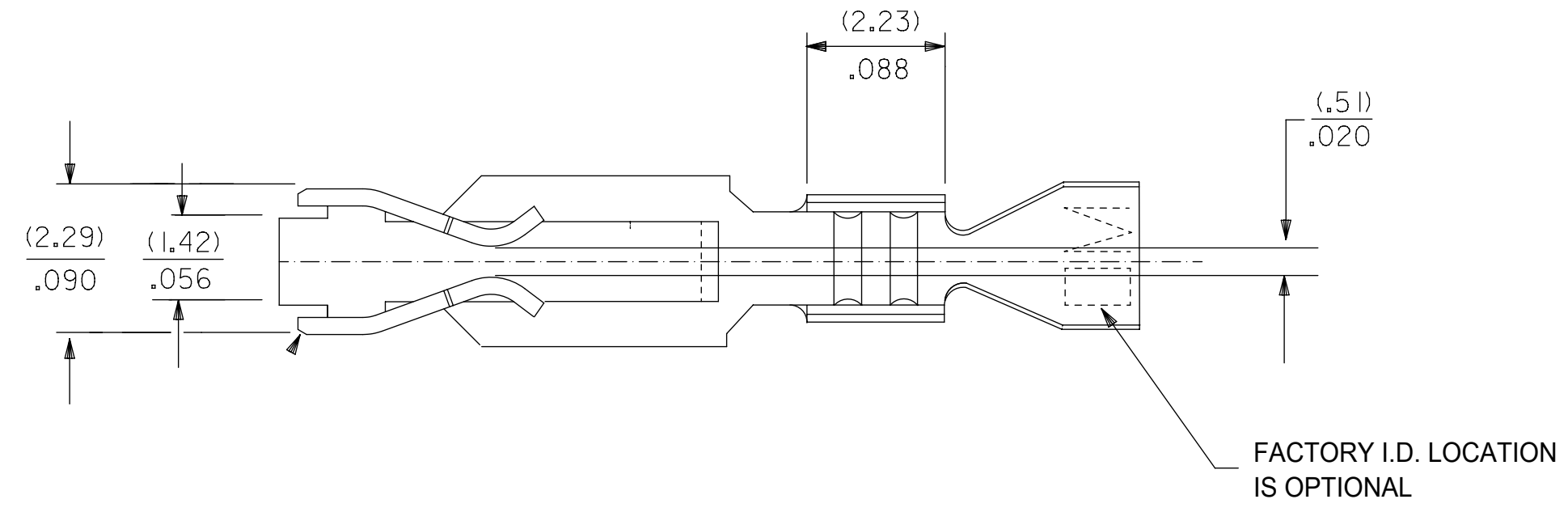
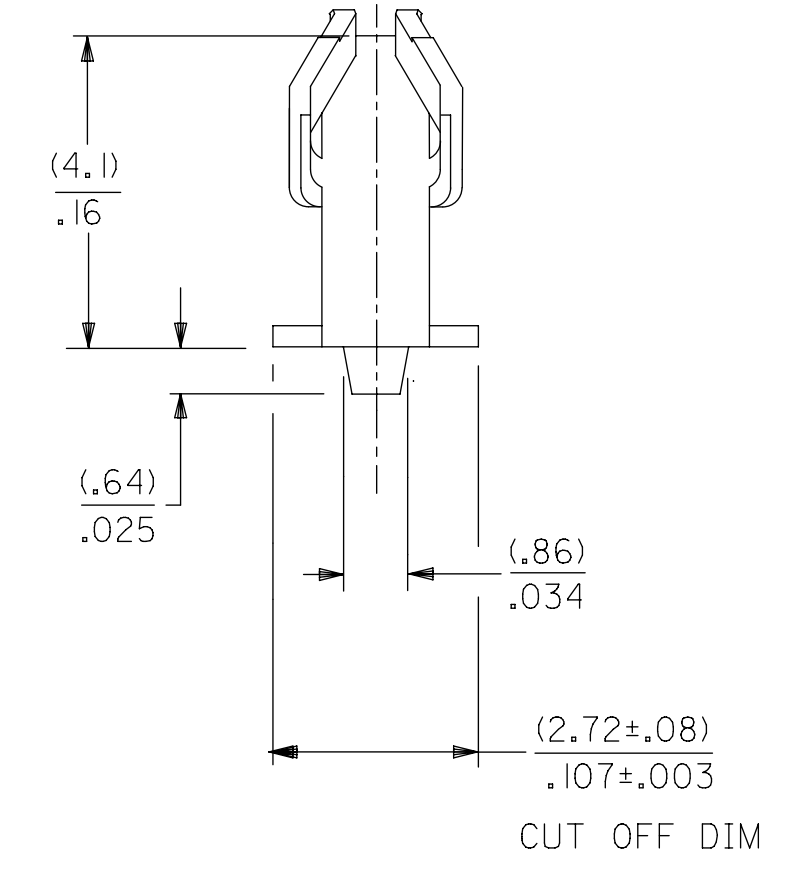


- NOTES:
1. MATERIAL: SEE LEGEND
  2. FINISH: SEE LEGEND
  3. PRODUCT SPECIFICATION: PS-40-02  
PACKAGING SPECIFICATION: CHAIN FORM: SEE PK-2759-002  
LOOSE FORM: SEE PK-2759-001
  4. DIMENSIONS GIVEN ACROSS CENTERLINES ARE SYMMETRICAL ABOUT THOSE CENTERLINES WITHIN HALF THE TOTAL TOLERANCE
  5. CRIMP FOR 22 TO 26 GA. WIRE WITH MAX. INSULATION DIA. OF (1.65)/.065
  6. THIS PRODUCT CONFORMS TO CLASS B REQUIREMENTS OF COSMETIC SPECIFICATION PS-45499-002



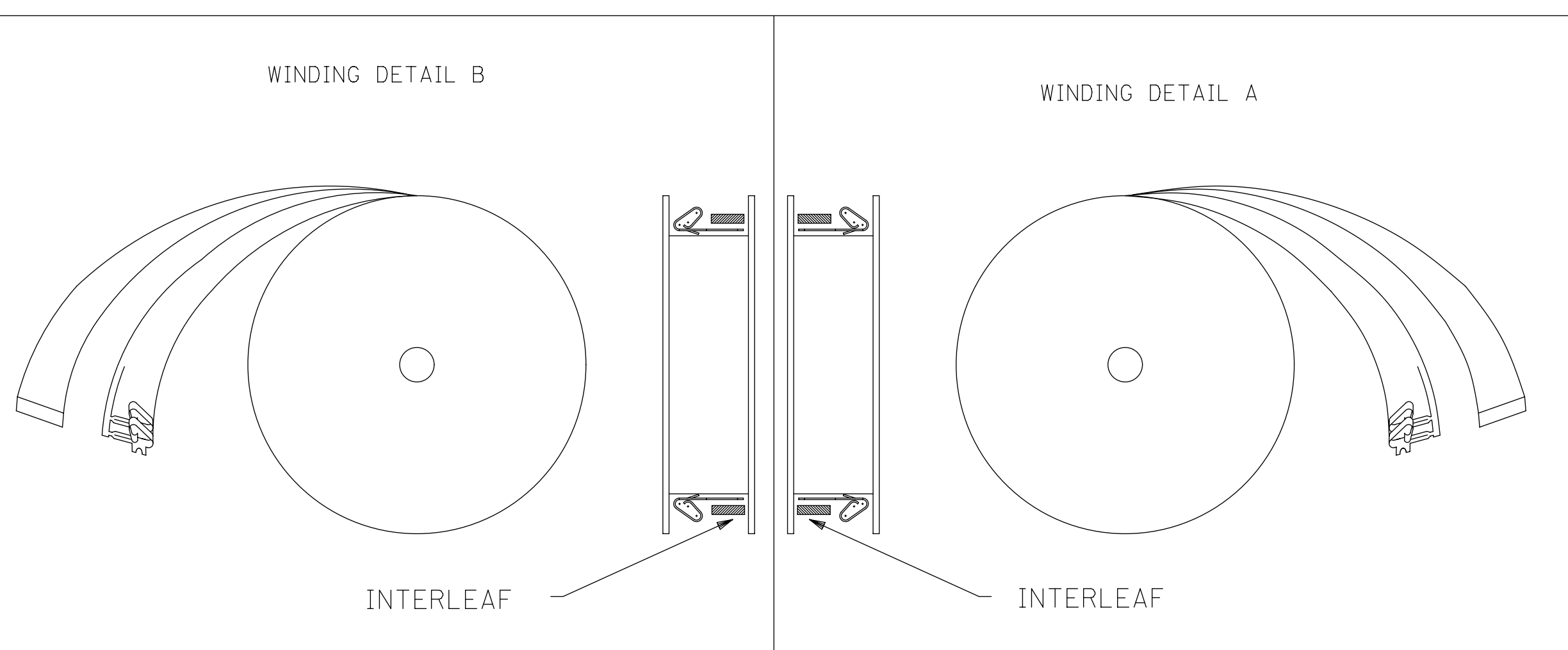
SELECTIVE PLATING AREA



7258-\*\*\*  
 MAT'L: (.27) .0106 THK  
 BLANK=BRASS  
 A=PHOS. BRONZE  
 FORM  
 BLANK= CHAIN PER DETAIL B  
 A=CHAIN PER DETAIL A  
 L= LOOSE

PLATING PER SDES- 88

- (909) - HOT TIN DIP: (0.00254)/.000100 MIN.
- (558) - SELECT GOLD: (0.00076)/.000030 MIN.  
OVERALL GOLD FLASH: (0.00005)/.000002 MIN.  
OVERALL NICKEL UNDERPLATE: (0.00127)/.000050 MIN.
- (561) - SELECT GOLD: (0.00076)/.000030 MIN.  
OVERALL NICKEL UNDERPLATE: (0.00127)/.000050 MIN.
- (555) - SELECT GOLD: (0.00038)/.000015 MIN.  
OVERALL NICKEL UNDERPLATE: (0.00076)/.000030 MIN.



SYMBOLS										THIS DRAWING CONTAINS INFORMATION THAT IS PROPRIETARY TO MOLEX ELECTRONIC TECHNOLOGIES, LLC AND SHOULD NOT BE USED WITHOUT WRITTEN PERMISSION																			
DIMENSION UNITS					SCALE					CURRENT REV DESC: NOTE 3 UPDATED																			
= 0					MM					1:1																			
= 0					GENERAL TOLERANCES (UNLESS SPECIFIED)																								
= 0																													
= 0					4 PLACES ±					±					EC NO: 605479														
= 0					3 PLACES ±					± 0.01					DRWN: SS06 2018/09/12														
= 0					2 PLACES ±					0.25 ± 0.014					CHK'D: ISHWARG 2018/10/05														
= 0					1 PLACE ±					0.36 ±					APPR: ISHWARG 2018/10/05														
= 0					0 PLACES ±					±					INITIAL REVISION:														
= 0					ANGULAR TOL ±					0.5°					DRWN: JJS 1987/12/07														
= 0					DRAFT WHERE APPLICABLE MUST REMAIN WITHIN DIMENSIONS					THIRD ANGLE PROJECTION					APPR: LENZ 1987/12/07														
= 0										D-SIZE					7258					MATERIAL NUMBER CUSTOMER SHEET NUMBER									
															SEE CHART					GENERAL MARKET					1 OF 2				

DOCUMENT STATUS	P1	RELEASE DATE	2018/10/05	09:56:26
-----------------	----	--------------	------------	----------

7258-(*)*			7258-A(*)*														
PART NO.	ENG. NO		PART NO.	ENG. NO		PART NO.	ENG. NO		PART NO.	ENG. NO(SUFFIX ONLY)		PART NO.	ENG. NO(SUFFIX ONLY)	VOID CKT.	PART NO.	ENG. NO(SUFFIX ONLY)	VOID CKT.
08-50-0183	7258-(P909)		08-04-0001	7258-A(999)													
08-50-0185	7258-(P909)L		08-65-0121	* 7258-A(P56 I)	ES-276-P56 I												
08-50-0283	7258-(P909)A		08-65-0122	* 7258-A(P56 I)L													
			08-56-0123	* 7258-A(P558)	MAKE FROM												
			08-56-0124	* 7258-A(P558)L	7258-A(P56 I)												
				7258-A(56 I)													
				7258-A(56 I)L													
			08-52-0124	* 7258-A(P909)													
			08-52-0125	* 7258-A(P909)L													
			08-65-0126	7258-A(P555)	ES-276-P555												
			08-65-0127	7258-A(P555)L													

THIS DRAWING CONTAINS INFORMATION THAT IS PROPRIETARY TO MOLEX ELECTRONIC TECHNOLOGIES, LLC AND SHOULD NOT BE USED WITHOUT WRITTEN PERMISSION											
SYMBOLS		DIMENSION UNITS		SCALE		CURRENT REV DESC: NOTE 3 UPDATED					
▽ = 0		MM		1:1		<b>molex</b> TRIFURCON TERMINAL CRIMP TYPE, .156 CENTERS 22 TO 26 AWG PRODUCT CUSTOMER DRAWING DOCUMENT NUMBER: <b>SD-7258</b> DOC TYPE: PSD    DOC PART: 001    REVISION: U1 MATERIAL NUMBER: SEE CHART    CUSTOMER: GENERAL MARKET    SHEET NUMBER: 2 OF 2					
▽ = 0		GENERAL TOLERANCES (UNLESS SPECIFIED)									
▽ = 0		MM		INCH							
▽ = 0		4 PLACES ±		±							
▽ = 0		3 PLACES ±		± 0.01							
▽ = 0		2 PLACES ±		± 0.25 ± 0.014							
▽ = 0		1 PLACE ±		± 0.36 ±							
▽ = 0		0 PLACES ±		±							
▽ = 0		ANGULAR TOL ±		± 0.5 °							
▽ = 0		DRAFT WHERE APPLICABLE MUST REMAIN WITHIN DIMENSIONS		THIRD ANGLE PROJECTION		DRAWING		SERIES		MATERIAL NUMBER	
▽ = 0				D-SIZE		7258		SEE CHART		GENERAL MARKET	