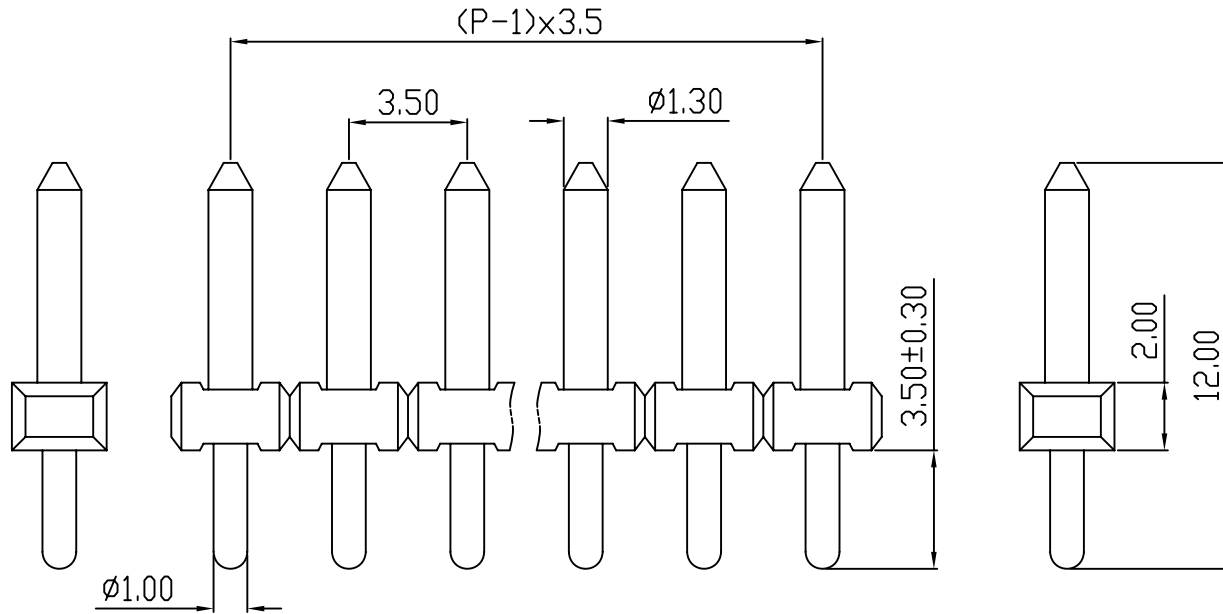
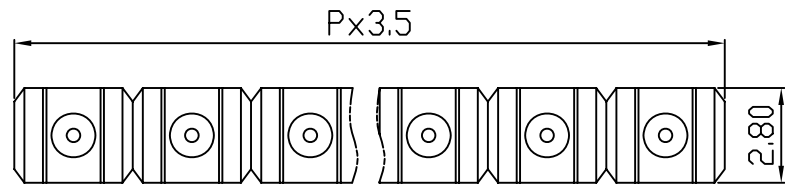
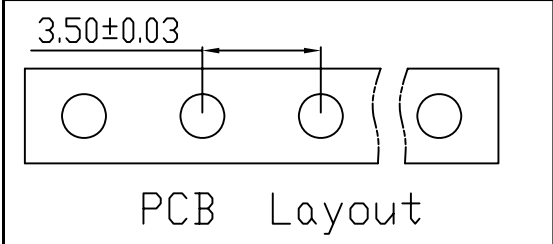


linear dimension(Tolerances Standard GB/T 14486-2008)								—	\square	\perp
variable range	to 6	over 6 to 10	over 10 to 30	over 30 to 60	over 60 to 100	over 100 to 160	over 160 to	to 10	over 10 to 100	over 100 to
tolerance	±0.20	±0.30	±0.50	±0.70	±1.00	±1.30	±1.60	0.10	0.30	0.60



REVISION RECORD				
REV.	DESCRIPTION	ECN No.	APPROVED	DATE
A	新发行		CLF	21.09.19

UL/CUL 技术参数 UL/CUL Technical Data					
等级	Use Group		B	C	D
额定电压	Rated Voltage	[V]	300	-	300
额定电流	Rated Current	[A]	8	-	10
接线范围	Wire Range				
单/多芯线	Solid/Stranded	[AWG]	-		
耐电压	Withstanding Voltage		1600V/1Min		
IEC 技术参数 IEC Technical Data					
过电压类别	Overvoltage Category		III	III	II
污染等级	Contamination Class		3	2	2
额定电压	Rated Voltage	[V]	160	200	400
额定电流	Rated Current	[A]	10	10	10
额定冲击电压	Impulse withstand voltage	[KV]	2.5	2.5	4.0
导线截面积	Conductor cross section		-		
硬质/柔性导线	Solid/flexible	[mm ²]	-		
材料					
绝缘材料	Insulation Material		PBT		
阻燃等级	Imflammability		UL94V-0/UL94V-2		
导体材料	Contact Material		铜合金 Copper alloy		
导体表面镀层	Contactive Coating		镀锡 Tin Plated		
一般参数					
间距	Pitch	[mm]	3.5		
极数	Poles	[P]	2-24		
剥线长度	Stripping Length	[mm]	-		
螺丝	Screw/扭矩	Torque(Max) [N.m]	-		
工作温度	Operating temperatur	[°C]	-30~+120		
引脚尺寸	Pin Dimensions	[mm]	3.5		
PCB板孔径	PCB Hole Diameter	[mm]	1.2		

DES.	LQQ	DATE	21.09.19
CHK.	BY	DATE	21.09.19
APP.	CLF	DATE	21.09.19

单位/UNITS	mm	尺寸/SIZE	A4	比例/SCALE	1:1
慈溪市科发电子有限公司 CIXI KEFA ELECTRONIC CO., LTD					

第三视角/THIRD ANGLE PROJECTION		版本/REV	A
		名称/TITLE	KF332J-3.5