

BACA-AMP-178 ✓ ACTIVE

MATE-N-LOK | Micro MATE-N-LOK

TE Internal #: 1-794606-1

Receptacle Contact, Gold, 250 VAC, 250 VDC, Locking Lance

Contact Retention, 24 – 20 AWG Wire Size, .2 – .5 mm² Wire Size,

Crimp, Micro MATE-N-LOK

[View on TE.com >](#)



Connectors > Contacts > Connector Contacts



Contact Type: **Receptacle**

Contact Mating Area Plating Material: **Gold**

Wire Contact Termination Area Plating Material: **Tin**

Operating Voltage: **250 VDC**

Features

Product Type Features

Discrete Wire Type	Stranded
--------------------	----------

Electrical Characteristics

Operating Voltage	250 VDC
-------------------	---------

Contact Features

Mating Square Post Dimension	.64 mm[.025 in]
------------------------------	-----------------

Contact Underplating Material Thickness	1.27 µm[50 µin]
---	-----------------

Wire Contact Termination Area Plating Thickness	2.54 µm[100 µin]
---	------------------

Wire Contact Termination Area Plating Material Finish	Bright
---	--------

Contact Mating Area Plating Material Thickness	.38 µm[15 µin]
--	----------------

Contact Mating Area Plating Material Finish	Bright
---	--------

Contact Orientation	Straight
---------------------	----------

Contact Underplating Material	Nickel
-------------------------------	--------

Contact Type	Receptacle
--------------	------------

Contact Mating Area Plating Material	Gold
--------------------------------------	------

Wire Contact Termination Area Plating Material	Tin
--	-----



Contact Retention Within Housing	With
Contact Base Material	Phosphor Bronze
Contact Current Rating (Max)	5 A

Termination Features

Termination Method to Wire & Cable	Crimp
Product Terminates To	Wire & Cable

Mechanical Attachment

Wire Insulation Support	Without
Contact Retention Type Within Housing	Locking Lance

Dimensions

Compatible Insulation Diameter Range	.89 – 1.52 mm [.035 – .06 in]
Wire Size	.2 – .5 mm ²

Usage Conditions

Operating Temperature Range	-40 – 105 °C [-40 – 221 °F]
-----------------------------	-----------------------------

Operation/Application

Circuit Application	Power
---------------------	-------

Industry Standards

Compatible With Agency/Standards Products	VDE
---	-----

Packaging Features

Packaging Quantity	15000
Packaging Method	Reel

Product Compliance

[For compliance documentation, visit the product page on TE.com>](#)

EU RoHS Directive 2011/65/EU	Compliant
EU ELV Directive 2000/53/EC	Compliant
China RoHS 2 Directive MIIT Order No 32, 2016	No Restricted Materials Above Threshold
EU REACH Regulation (EC) No. 1907/2006	Current ECHA Candidate List: JUNE 2023 (235) Candidate List Declared Against: JUNE 2023 (235) Does not contain REACH SVHC
Halogen Content	Low Halogen - Br, Cl, F, I < 900 ppm per



homogenous material. Also BFR/CFR/PVC Free

Solder Process Capability

Not applicable for solder process capability

Product Compliance Disclaimer

This information is provided based on reasonable inquiry of our suppliers and represents our current actual knowledge based on the information they provided. This information is subject to change. The part numbers that TE has identified as EU RoHS compliant have a maximum concentration of 0.1% by weight in homogenous materials for lead, hexavalent chromium, mercury, PBB, PBDE, DBP, BBP, DEHP, DIBP, and 0.01% for cadmium, or qualify for an exemption to these limits as defined in the Annexes of Directive 2011/65/EU (RoHS2). Finished electrical and electronic equipment products will be CE marked as required by Directive 2011/65/EU. Components may not be CE marked. Additionally, the part numbers that TE has identified as EU ELV compliant have a maximum concentration of 0.1% by weight in homogenous materials for lead, hexavalent chromium, and mercury, and 0.01% for cadmium, or qualify for an exemption to these limits as defined in the Annexes of Directive 2000/53/EC (ELV). Regarding the REACH Regulation, the information TE provides on SVHC in articles for this part number is based on the latest European Chemicals Agency (ECHA) 'Guidance on requirements for substances in articles' posted at this URL: <https://echa.europa.eu/guidance-documents/guidance-on-reach>

Compatible Parts



TE Part # 91501-1
CCI MICRO MNL REC 24-20 ASSY



Was called: SDE PEW 12
Now renamed to: SDE SA (no other physical changes)

TE Part # 91391-1
SDE PEW 12 MICRO MNL HAND TOOL



TE Part # 843996-6
TOOL, EXTRACTION RESET



TE Part # 2151022-1
OCEAN_2.0_APPLICATOR-S-055F070F



KIT

REPRESENTATION ONLY

TE Part # 7-2151022-7
OCEAN_2.0_SPARE_PART_KIT-055F070F



TE Part # 91391-2
SDE COMM MICRO MNL DIE SET



TE Part # 2151022-2
OCEAN_2.0_APPLICATOR-S-055F070F



TE Part # 7-2151022-1
OCEAN_2.0_APPLICATOR-S-055F070F



TE Part # 7-2151022-2
OCEAN_2.0_APPLICATOR-S-055F070F

Also in the Series | **Micro MATE-N-LOK**



Connector Contacts(27)



Insertion & Extraction Tools(1)



Rectangular Power Connectors(469)

Customers Also Bought



TE Part #1445022-8
MICRO MNL RFECEPT HSG SINGLE R



TE Part #1445022-3
MICRO MNL RFECEPT HSG SINGLE R



TE Part #1-794607-1
MICRO MNL RPT CNT STRP 15AU LF



TE Part #2359615-2
LUMAWISE ENDURANCE N+ Lt Gray Short Dome



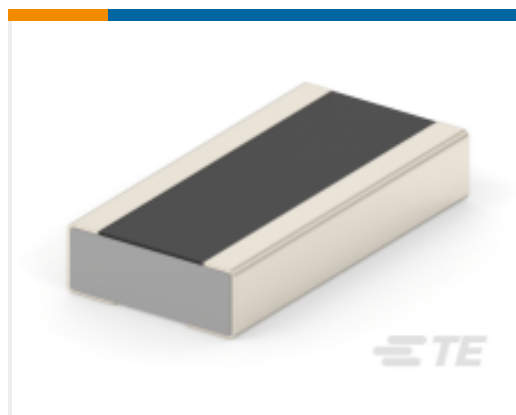
TE Part #2359615-4
LUMAWISE ENDURANCE N+ Lt Gray Tall Dome



TE Part #1-794608-2
PIN CONT 20-24 30 GOLD STRIP



TE Part #5-1586041-6
6P VAL-U-LOK R/A HDR V2 WITH 5PIN TML



TE Part #1-2176539-1
RLW73 B2 1% R068 200ppm 5k RL



TE Part #1-2083079-1
C/A Nector S Distr to Pigtail LV-2 White



TE Part #2119342-1
HOLDER, FEED FINGER

Documents

Product Drawings

[MICRO MNL RPT CNT STRP 15AU LF](#)

English

CAD Files

[Customer View Model](#)

[ENG_CVM_CVM_1-794606-1_K.2d_dxf.zip](#)

English

[3D PDF](#)



3D

Customer View Model

[ENG_CVM_CVM_1-794606-1_K.3d_igs.zip](#)

English

Customer View Model

[ENG_CVM_CVM_1-794606-1_K.3d_stp.zip](#)

English

By downloading the CAD file I accept and agree to the [Terms and Conditions](#) of use.

Datasheets & Catalog Pages

[SOFT_SHELL_PIN_AND_SOCKET_CONNECTORS_CATALOG](#)

English

[MICRO MATE-N-LOK CONNECTOR SYSTEM](#)

English

Product Specifications

[Application Specification](#)

English