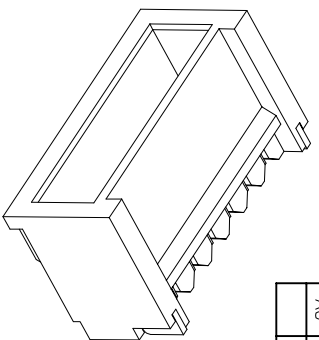
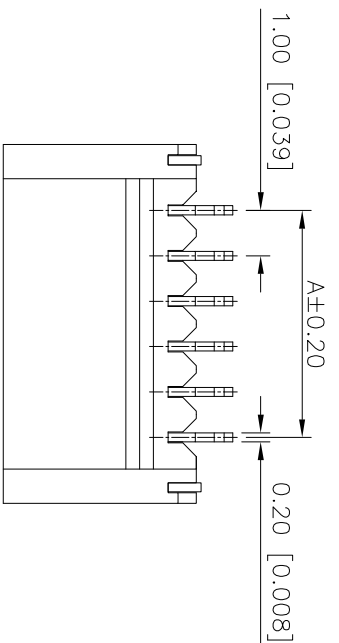
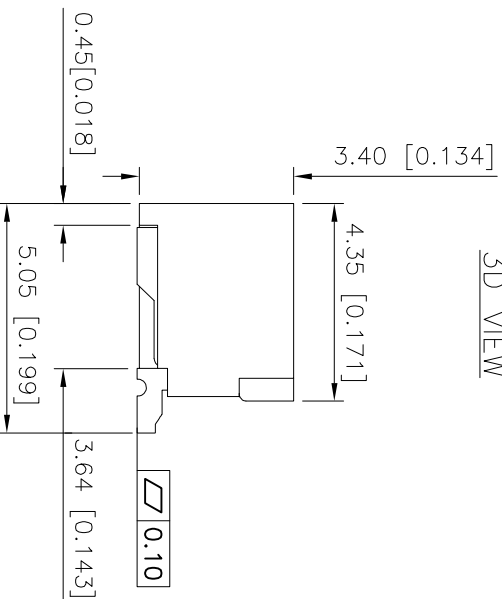
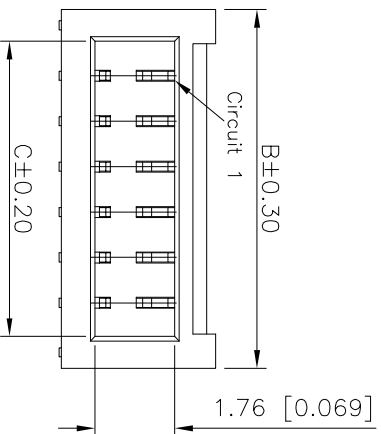


REVISIONS			
REV.	ECN NO.	LOCATION	DATE
A0	N/A	INITIAL RELEASE	2024.03.27



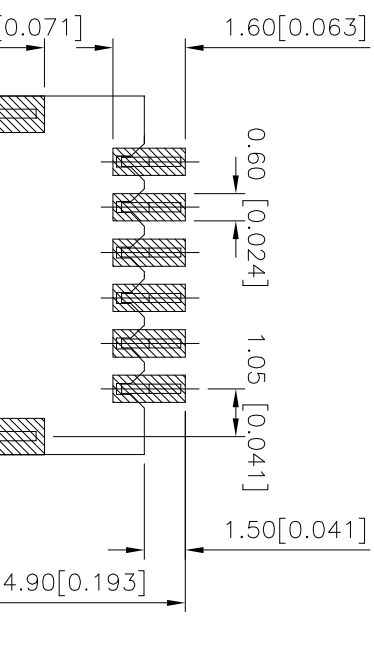
3D VIEW



PART NO.:

X1002 W R S-XX X HF-XX XX

- ① Series No
- ② Category:W-Wafer
- ③ Welding Board Angle:R-Straight 90°
- ④ Welding Way:S-SMT
- ⑤ Row No -Pin No:XX-02P-20P
- ⑥ Plug the Pin & Special No:B-Ultra-thin With Lock
- ⑦ HF-Halogen Free
- ⑧ Material:6T-PA6T;1T-PA10T;HT-HTN 6T 94V-0
- ⑨ Plating Category:  
 SN-Bright tin plating 70u" Min.;30" Ni Min.  
 SW-Matte Tin plating 70u" Min.;30u" Ni Min.

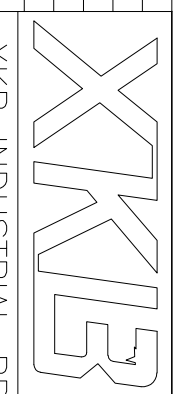


Poles	Dimensions (mm)			Poles	Dimensions (mm)		
	A	B	C		A	B	C
02	1.00	3.90	2.50	12	11.00	13.90	12.50
03	2.00	4.90	3.50	13	12.00	14.90	13.50
04	3.00	5.90	4.50	14	13.00	15.90	14.50
05	4.00	6.90	5.50	15	14.00	16.90	15.50
06	5.00	7.90	6.50	16	15.00	17.90	16.50
07	6.00	8.90	7.50	17	16.00	18.90	17.50
08	7.00	9.90	8.50	18	17.00	19.90	18.50
08	8.00	10.90	9.50	19	18.00	20.90	19.50
10	9.00	11.90	10.50	20	19.00	21.90	20.50
11	10.00	12.90	11.50				

X1002WRS-XXBHf-6T5W	PA6T UL 94V-0 (Halogen Free)	Phosphor Bronze	Matte Tin Plating
X1002WRS-XXB-1T5W	PA10T UL 94V-0		
X1002WRS-XXB-HT5W	HTN6T UL 94V-0	Tin-Plated	Finish(Pin And Solder Tabs)
X1002WRS-XXB-9T5W	PA9T UL 94V-0		
X1002WRS-XXB-6T5N	PA6T UL 94V-0		

RECOMMENDED P.C.BOARD LAYOUT  
(TOLERANCE:±0.05)

ANGULAR	±5°
X.	±0.40
X.X	±0.30
X.XX	±0.20
X.XXX	±0.15



DESIGN	桑 葦	VIEW:	MODEL TYPE:
CHECKED		UNIT: mm/in	1.00mm Crimp Style Connector
APPROVED		SIZE: A4	PART NO.: X1002WRS-XXXX-XXXX
			DWG NO.:

XKB INDUSTRIAL PRECISION CO.,LIMITED

SCALE	PAGE	REVISION
N/A	1/1	A0