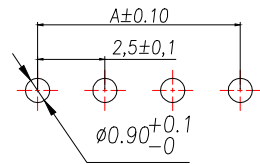
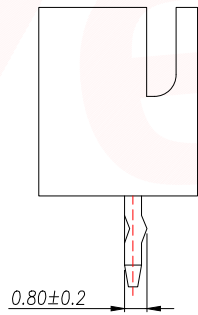
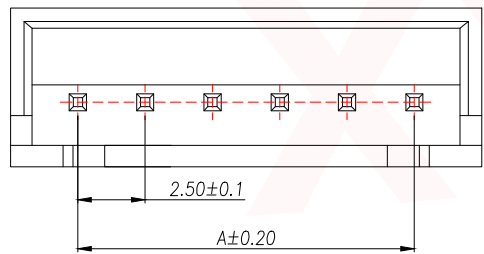
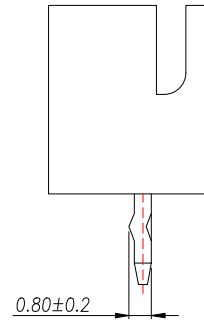
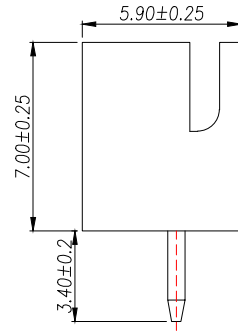
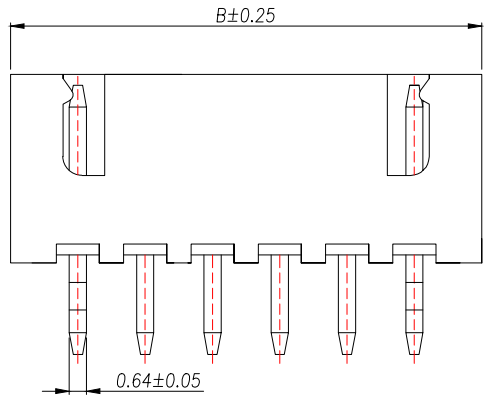


| | | | | |
|------|------|----------|------|------|
| REV. | Q'TY | ECN. NO. | APR. | DATE |
| | | | | |



SUGGESTED PCB LAYOUT
(COMPONENT SIDE)

技术要求:

1. 塑件材料: PA66(UL-94V-0)
2. 接触件: 黄铜镀锡
3. 接触电阻: $\leq 10m\Omega$
4. 绝缘电阻: $> 100M\Omega$
5. 额定电压: 250V AC DC
6. 额定电流: 2.0A AC DC
7. 耐压: 能承受 1000V AC/Minute
8. 工作温度: $-25^{\circ}\sim+85^{\circ}$
9. 可焊性试验: 浸锡面积 $>95\%$ 温度 235 , 时间 2.5 ± 0.5 秒
10. 铅和铜等六大有害物质含量要符合环保要求.

| Part No | Pin | A | B |
|-----------------|-----|-------|-------|
| XY-XH2.54-2A11 | 2 | 2.50 | 7.50 |
| XY-XH2.54-3A11 | 3 | 5.00 | 10.00 |
| XY-XH2.54-4A11 | 4 | 7.50 | 12.50 |
| XY-XH2.54-5A11 | 5 | 10.00 | 15.00 |
| XY-XH2.54-6A11 | 6 | 12.50 | 17.50 |
| XY-XH2.54-7A11 | 7 | 15.00 | 20.00 |
| XY-XH2.54-8A11 | 8 | 17.50 | 22.50 |
| XY-XH2.54-9A11 | 9 | 20.00 | 25.00 |
| XY-XH2.54-10A11 | 10 | 22.50 | 27.50 |
| XY-XH2.54-11A11 | 11 | 25.00 | 30.00 |
| XY-XH2.54-12A11 | 12 | 27.50 | 32.50 |
| XY-XH2.54-13A11 | 13 | 30.00 | 35.00 |
| XY-XH2.54-14A11 | 14 | 32.50 | 37.50 |
| XY-XH2.54-15A11 | 15 | 35.00 | 40.00 |
| XY-XH2.54-16A11 | 16 | 37.50 | 42.50 |
| XY-XH2.54-17A11 | 17 | 40.00 | 45.00 |
| XY-XH2.54-18A11 | 18 | 42.50 | 47.50 |
| XY-XH2.54-19A11 | 19 | 45.00 | 50.00 |
| XY-XH2.54-20A11 | 20 | 47.50 | 52.50 |

| | | | | |
|----|-----------|---------------|-----|-----------------------------------|
| 2 | 端子Contact | 黄铜 | N*1 | 电镀(锡): 整个表面镀底镍30u"MIN, 再镀锡80u"MIN |
| 1 | 基座Wafer | PA66(UL94V-0) | 1 | 白色 |
| 序号 | 名称 | 材料 | 数量 | 备注 |

| DIMENSION IN mm | | 厦门市辛译精密电子有限公司 Xiamen XinYi Xyconn Electronics Co.,Ltd | | | |
|--------------------------------------|----------|--|------|-------------------------|-----------|
| TOLERANCE UNLESS OTHERWISE SPECIFIED | | TITLE: WAFER XH2.54MM 直针 | | | |
| .X±0.35 | .X.*±5° | APR. | Alex | DWG NO. XY-XH2.54-NA11 | |
| .XX±0.25 | .X.*±3° | CHK. | Jack | PROJ. CUSTOMER DRAWING | |
| .XXX±0.15 | .XX.*±1° | DRA. | Can | SIZE A4 | SCALE 1:1 |
| | | | | SHEET 1/1 | REV. A |