

REVISION RECORD				
REV	ECN	DESCRIPTION	DRFT	DATE
A1		更换图纸模版	Z.S.P	21.11.15

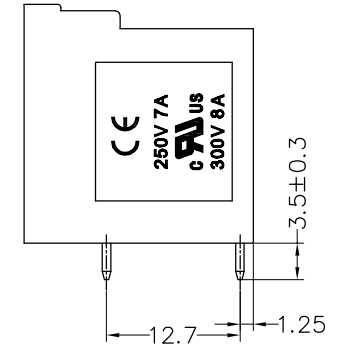
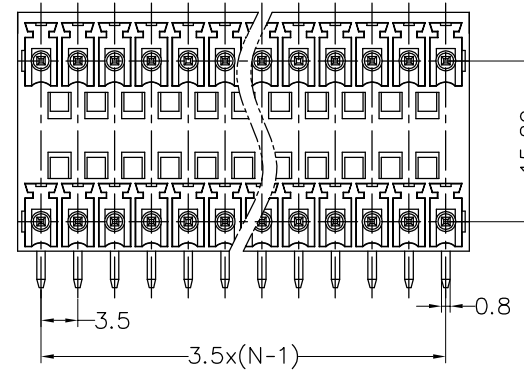
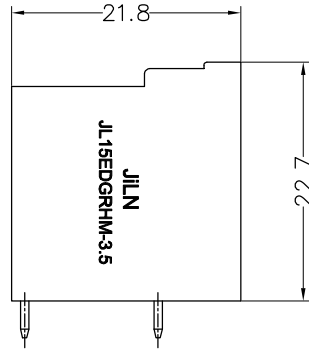
NOTES1:

UL Standard

1. Rated voltage/current : 300V / 8A
2. Withstanding voltage : AC1600V/1Min.
3. Insulation Resistance: 1000MΩ Min
4. Contact Resistance: 20mΩ Max

IEC Standard

1. Pollution degree	2	2	3
Overvoltage category	II	III	III
Rate impulse voltage(KV)	2.5KV	2.5KV	2.5KV
Rate voltage(V)	320V	250V	160V
Rate current(A)	5A		

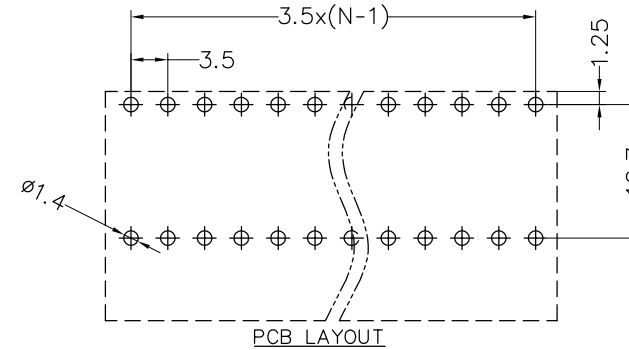
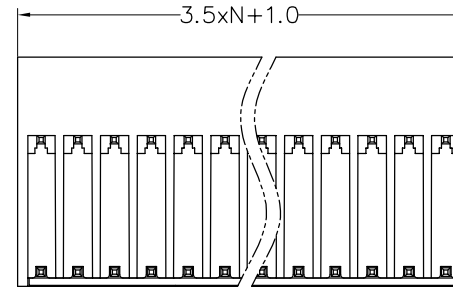


NOTES2:

1. Dimension shall be interpreted per ASME Y14.5-2009
2. Pitch : 3.50mm, Poles : N=4~48P
3. Operating temperature: -40°C~+105°C
4. Undimensioned tolerances:

Pitch range in mm			Nominal dimension range in mm							
TO	Over TO	Over TO	TO	Over TO	Over TO	Over TO	Over TO	150	0.1/10	
6	10	24	30	60	100	150			∠	
±0.15	±0.20	±0.30	±0.30	±0.50	±0.70	±1.00	±1.30		±2*	

5. RoHS Compliance



Ordering Information

JL15EDGRH - 350 XX G 01

Pitch
350=3.5PH

No. of pins
2P~24P

Housing Color
B=Black
G=Green
U=Blue
R=Red
W=White
Y=Yellow
O=Orange
E=Grey

Packing
O=Pe bag
A=Tray
T=Tube

DRAW		SCALE	FIT	东莞市锦凌电子有限公司 DONGGUAN JINLING ELECTRONIC CO.,LTD	
		UNIT	mm		
CHECK		SIZE	A4		
		SHEET	1/1		
APPROVE		PROJ.		PART NO.	JL15EDGRH-350XXG01
				TITLE:	JL15EDGRH-3.5-2XNP插拔式公座/弯脚/绿色