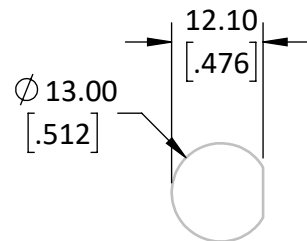
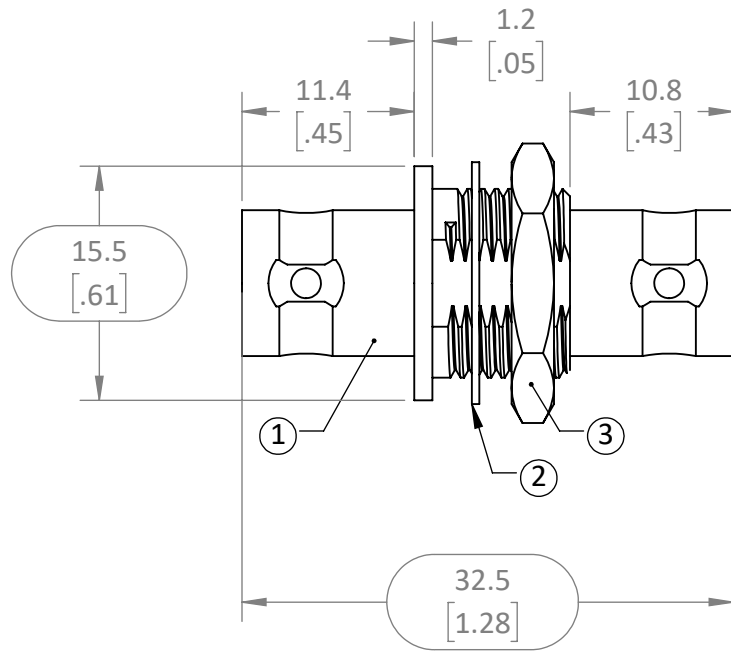


REVISIONS			
REV	DESCRIPTION	DATE	APPV
A	PRODUCTION RELEASE	JHAGER 8/17/22	

NOTES: (UNLESS OTHERWISE SPECIFIED)

- ALL DIMENSIONS ARE IN MILLIMETERS [IN].
- DIMENSIONS APPLY AFTER FINISHING.
- MANUFACTURE TO BE COMPLIANT WITH EU RoHS DIRECTIVE, USE MATERIALS THAT DO NOT CONTAIN REACH SUBSTANCES OF VERY HIGH CONCERN >1000ppm, AND USE DRC CONFLICT-FREE SOURCED MATERIALS.
- ELECTRICAL PROPERTIES SHOWN FOR INFORMATION ONLY. SEE LINX DATA SHEET FOR PRODUCT SPECIFICATIONS.
 - IMPEDANCE: 50Ω
 - VSWR: 1.4 MAX @4GHz
 - MAX FREQUENCY: DC-4GHz
 - INSERTION LOSS: .75dB @4GHz
- PART QUALIFIED IAW LINX INTERNAL TEST PLAN AT LATEST REVISION.
- MECHANICAL PROPERTIES
 - OPERATING TEMPERATURE: -65° - +165°C
 - UNLISTED DIMENSIONS ARE CONTROLLED BY SOLID MODEL AT LATEST REVISION
 - INTERFACE: BNC TYPE IAW MIL-STD-348B
 - DURABILITY: 500 CYCLES
 - FEM PIN MATERIAL PHOSPHOR BRONZE
 - MAX BLKHD THICKNESS: 4mm [.156in] @ .56Nm [5in/lbs] TORQUE
 - BNC MOUNTING BULKHEAD FLANGE ACETAL [POM] PLASTIC
- PACKAGE INDIVIDUALLY AND PLACE IN LOT BAG
- LABEL LOT PACKAGING IAW LINX PROVIDED LABEL DRAWING [MEC-LBL-4X2.5-PAPER-ID]




RECOMMENDED PANEL MOUNTING HOLE SCALE 1:1

ITEM	U/M	DESCRIPTION
1	EA	ADP POM BLKHD BNC-F-BNCF-NIC/BRS
2	EA	WASHE PNL TOOTH 16IDX13IDX.5 NIC/BRS
3	EA	NUT HEX PNL 1/2-28 X2.8THK NIC/BRS

WARNING: THIS DRAWING CONTAINS PROPRIETARY INFORMATION THAT IS THE SOLE PROPERTY OF LINX TECHNOLOGIES, AND SHALL BE TREATED AS SUCH. NO DISCLOSURE OR REPRODUCTION OF THIS DOCUMENT IS PERMITTED, IN WHOLE OR IN PART, WITHOUT THE EXPRESS WRITTEN PERMISSION OF LINX TECHNOLOGIES OR ITS DESIGNATED AGENTS.

MATERIAL:	BRASS CuSnP; POM	INTERPRET DIMENSIONS AND TOLERANCES PER ASME Y14.5. .X ±2.0 .XX ±1.00 .XXX ±.500	ANGLES: ±1° SURFACE: √	PROJECTION:
FINISH:	NICKEL [100μ"] Au [3μ"]	DRAWN: JHAGER ENGR: DASARATHAN	DT: 8/17/22 DT: 8/17/22	



159 ORT LANE
MERLIN, OR 97532

TITLE:
BULKHEAD BNC FEMALE TO BNC FEMALE

SIZE	DWG. NO.	REV
A	C-ADP-BNCF-BNCF-B	A

SCALE: 2:1 DO NOT SCALE DRAWING SHEET 1 OF 1