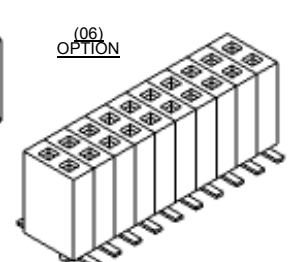
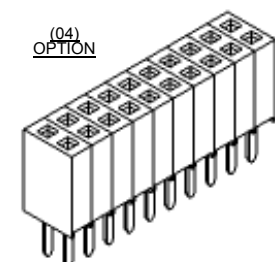
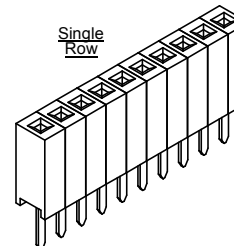
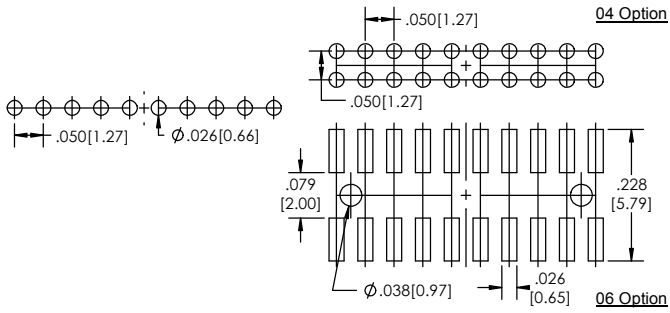


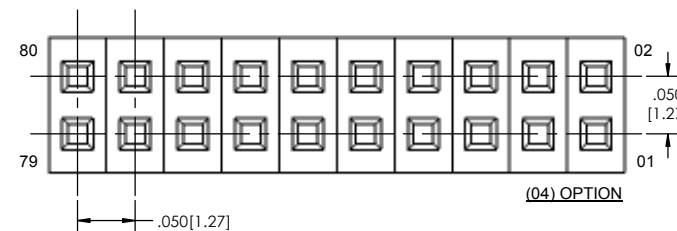
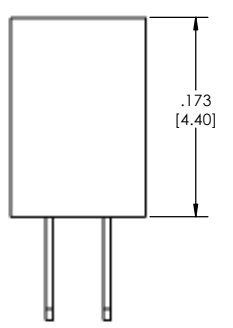
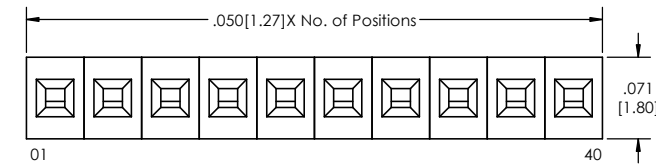
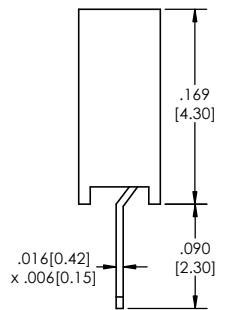
Recommended P.C. Board Layout
SCALE 6:1



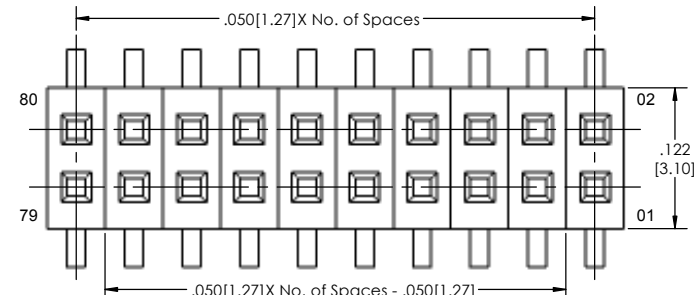
SSHS-5 **[XX]** - **[X]** - **[XX]** - **[XX]** - **[XXX]** - **[XX]** - **[X]** - **[XX]** - **[LF]**
(A) **(B)** **(C)** **(D)** **(E)** **(F)** **(G)** **(H)** **(I)**

- A. Pins Per Row
 - 1 through 40
- B. Row Specification
 - S= Single Row
 - D= Double Row
- C. Mount Option
 - 04= Thru Hole
 - 06= Surface Mount
- D. Plating Options
 - See Plating Options below
- E. Polarized Position
 - Leave blank if not needed
 - If required, specify empty pin position
 - e.g. 012 for Pin 12
- F. Packing Information
 - TR= Tape and Reel
 - TB= Tube
- G. Pad
 - P= Plastic
 - K= Kapton
 - O= No Pad
 - If left blank, packaging at MLE's discretion
 - Pad may be metal, mylar or plastic
- H. Alignment Pin Option
 - Leave blank if not needed
 - AP= With
- I. Lead Free

Mates with:
 BSTCM.
 BSTS.
 TBSTC.
 TBSTCM.
 TBSTS.
 TSHC.
 TSHR.
 TSHS.
 TSHSCM.
 TTSHC.
 TTSHR.
 TTSHS.
 TTSHSM.



(06) OPTION

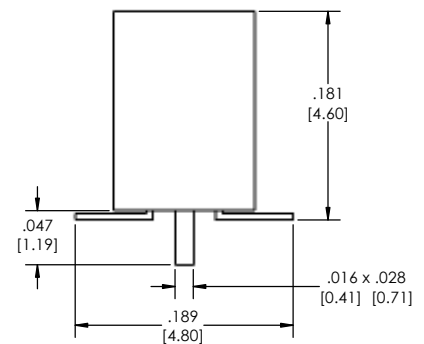


Plating options	
G	-10µ Gold on Contact Area/ Flash on Tail
T	-Matte Tin all Over
GT	-10µ Gold on Contact Area/ Matte Tin on Tail
H	-30µ Gold on Contact Area/ Matte Tin on Tail
F	-Gold Flash over Entire Pin
FT	-Gold Flash on Contact Area/ Matte Tin on Tail

Specifications:
 Insertion Depth: .050 [1.27] Min.
 Insertion Force- Per Contact- H Plating:
 3.8oz. [1.05N] avg. with .016 [0.41] Sq. pin
 Withdrawal Force- Per Contact- H Plating:
 2.0oz. [0.65N] avg. with 0.16 [0.41] Sq. pin
 Current Rating: 1.5 Ampere
 Insulation Resistance: 1000M Ohms Min.
 Dielectric Withstanding: 300V AC
 Contact Resistance: 20M Ohms Max.
 Operation Temperature: -40°C to +105°C
 Max. Process Temperature
 Peak: 260°C up to 10 secs.
 Process: 230°C up to 60 secs.
 Wave: 260°C up to 6 secs.
 Reflow: 260°C up to 10 secs.
 Manual Solder: 350°C up to 5 secs.

Materials:
 Contact Material: Phosphor Bronze
 Insulator Material: Nylon 6T
 Plating: Au or Sn over 50µ" (1.27) Ni

Tails may be clipped to achieve specific dimensions
 Products cut to specific sizes are uncancelable/nonreturnable.
 Parts are subject to change without notice.



PROPRIETARY AND CONFIDENTIAL
 THE INFORMATION CONTAINED IN THIS DRAWING IS THE SOLE PROPERTY OF Major League Electronics. ANY REPRODUCTION IN PART OR AS A WHOLE WITHOUT THE WRITTEN PERMISSION OF Major League Electronics IS PROHIBITED.

UNLESS OTHERWISE SPECIFIED:		NAME	DATE		
DIMENSIONS ARE IN INCHES		DRAWN	EOW		10/01/15
TOLERANCES:		CHECKED	GWE		10/01/15
ONE DECIMALS ±.100		ENG APPR.			
TWO DECIMALS ±.010		MFG APPR.			
THREE DECIMALS ±.002		ADDRESS:		2533 Centennial Blvd. Jeffersonville, IN 47130 Phone: 812-670-4174 Fax: 812-670-4175 E-Mail: mle@mlelectronics.com	
FOUR DECIMALS ±.002		MATERIAL:			
NEXT ASSY USED ON		FINISH:			
APPLICATION		DO NOT SCALE DRAWING			
		TITLE: SSHS-5 SERIES		REV	
		SIZE DWG. NO.		E	
		SCALE 12:1		SHEET 1 OF 1	