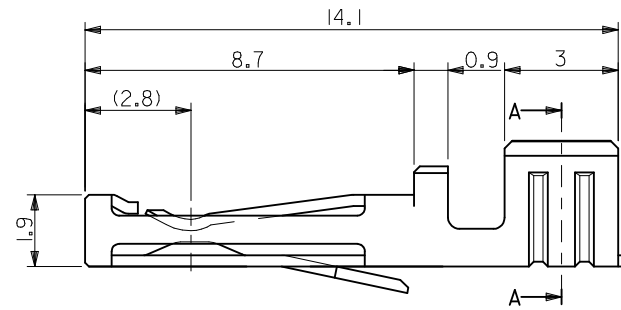
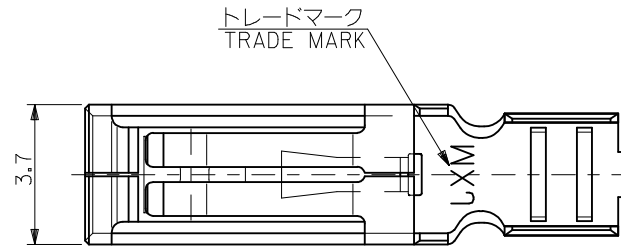
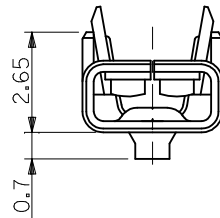
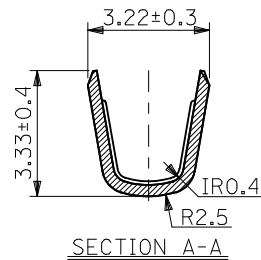


注記
NOTES

1. 材質
MATERIAL
銅合金 (板厚: 0.3)
COPPER ALLOY (THICKNESS : 0.3)
2. メッキ仕様
TERMINAL PLATING
接点部 : 金メッキ 0.25 μm MIN.
CONTACT AREA : GOLD 0.25 μm MIN.
圧着部 : 錫メッキ 1.0 μm MIN.
CRIMP AREA : TIN 1.0 μm MIN.
下地メッキ : ニッケルメッキ 1.27 μm MIN.
UNDER PLATE : NICKEL 1.27 μm MIN.
3. 適用電線範囲 : UL 1015 , AWG #18~14
APPLICABLE WIRE RANGE : UL 1015 , AWG #18~14
4. 被覆外径 : φ3.8 MAX.
INSULATION EXTERNAL DIA : φ3.8 MAX.
5. 適用ハウジング : 51300-**** , 51301-****
APPLICABLE HOUSING : 51300-**** , 51301-****
6. 適用圧着工具 (手動) : 57413-5300 (適用電線 : AWG #16~14)
APPLICABLE CRIMP TOOL (HAND) : 57413-5300 (APPLICABLE WIRE AWG #16~14)
: 57413-5400 (適用電線 : AWG #18)
: 57413-5400 (APPLICABLE WIRE AWG #18)
7. 本製品は 56194-9185 の鉛フリー品である。
THIS PRODUCT IS LEAD FREE OF 56194-9185.



| | | | |
|---|--------------------------------|--------------|------------|
| ① | CHAIN | 56194-9028 | 56194-9*** |
| | バラ状 LOOSE | 56194-9128 | |
| | 端子形状 TERMINAL CONFIGURATION | MATERIAL No. | MODEL NO. |

| | | | | | | | |
|-------------------------------------------------------------------------------------------------------------------------------|---------------------------------------|--------------|----------------------------|-------------------|------------------------------------------------------------------------------------------------|------------------------|------------------------|
| RELEASED EC NO: WNA2010-0098 DRWN: TMOELLER 2009/08/11 CHKD: MURPHY APPR: JFURPHY 2009/08/14 | GENERAL TOLERANCES (UNLESS SPECIFIED) | | DIMENSION STYLE MM ONLY | | SCALE 1:1 | DESIGN UNITS METRIC | THIRD ANGLE PROJECTION |
| | 10 UNDER | ±0.2 | DRAWN BY M. NABEI | DATE '07/10/30 | COMPACT ROBOT CONN. POWER CRIMP SOCKET -LEAD FREE- MOLEX INCORPORATED SD-56194-003 | | |
| | 10 OVER 30 UNDER | ±0.25 | CHECKED BY M. ISOGAYA | DATE '07/10/30 | | | |
| | 30 OVER | ±0.3 | APPROVED BY N. UKITA | DATE '07/10/30 | | | |
| ANGULAR ±3 ° | | MATERIAL NO. | DOCUMENT NO. | SHEET NO. | | | |
| DRAFT WHERE APPLICABLE MUST REMAIN WITHIN DIMENSIONS | | SEE TABLE | | SD-56194-003 | | | 1 OF 1 |
| THIS DRAWING CONTAINS INFORMATION THAT IS PROPRIETARY TO MOLEX INCORPORATED AND SHOULD NOT BE USED WITHOUT WRITTEN PERMISSION | | | | | | | |