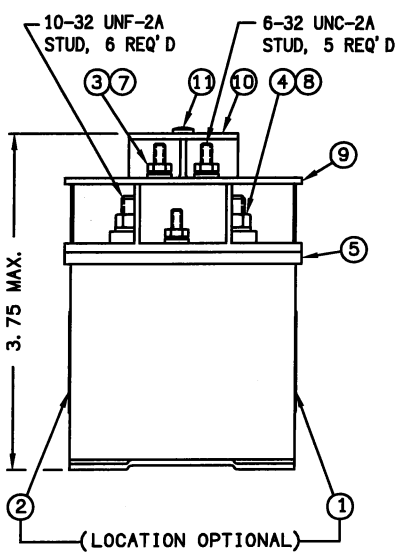
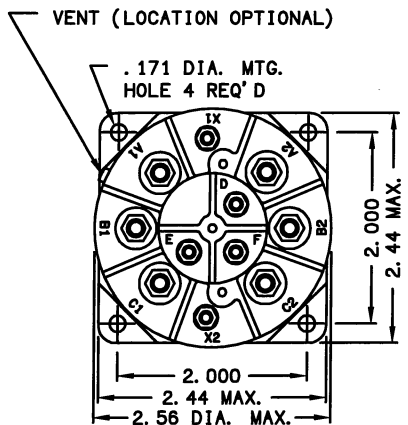


| REVISIONS | | RELEASED | DATE | APPROVED |
|-----------|--|----------|----------|----------|
| REV | DESCRIPTION | | | |
| A | ITEM 4 P/N WAS 50410-084, ADDED ITEMS 5 & 6 | | 73/06/20 | RS |
| B | REMOVED ITEM 6, ITEM 10 P/N WAS 30581-002 & ITEM 9 P/N WAS 30581-001 | | 73/08/21 | RS |
| C | 6311 LETTERING CHANGE ON TOP VIEW, ITEM 9, 10, 11 CHANGE | | 73/10/29 | RS |
| D | 9813 30581-001 WAS 30581-004, ITEM 9 | | 76/12/28 | RS |
| E | 07-023136 REDRAWN; ADDED TE P/N | | 07/09/18 | AH |



CONSTRUCTION
 MAIN CONTACTS
 CONFIGURATION 3 PST NO (DOUBLE BREAK)
 VOLTAGE (NOMINAL) 260/450VAC 400 HZ
 CURRENT: RES. 20 AMP
 IND. 20 AMP

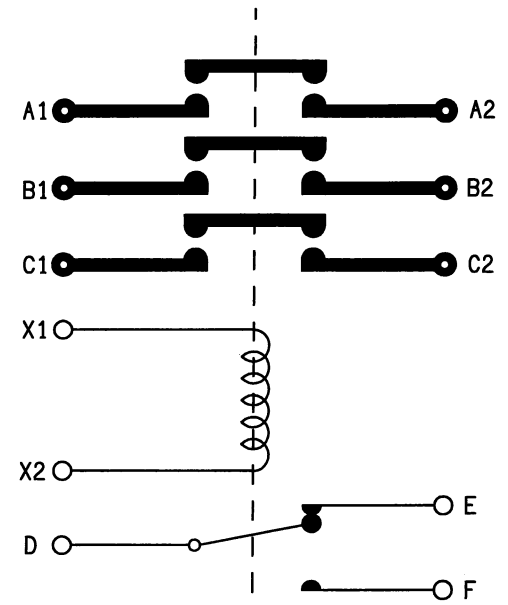
AUXILIARY CONTACTS
 CONFIGURATION SPDT
 VOLTAGE 28 VDC, 115 VAC 400 HZ
 CURRENT: RES. 5 AMP
 IND. 5 AMP
 LAMP 1 AMP

COIL DATA
 DUTY CYCLE CONTINUOUS
 NOM COIL VOLTAGE 28 VDC
 PICKUP MAX 18 VDC
 DROPOUT VOLTAGE 1-7 VDC

ENVIRONMENTAL DATA
 AMBIENT TEMP -55° C TO 71° C
 VIBRATION: SINE .06" D.A. OR 10gs

LIFE ELECTRICAL 30,000
LIFE MECHANICAL 100,000

WEIGHT, MAX. 1 LB.



NOTES:
 1. THIS UNIT DESIGNED TO THE BASIC REQUIREMENTS OF MIL-R-6106E EXCEPT AS NOTED.

| FIND NO | QTY REQD | PART OR IDENTIFYING NO | NOMENCLATURE OR DESCRIPTION | CAGE NO | DRAWING OR SPECIFICATION | MATERIAL OR NOTE |
|---------|----------|------------------------|-------------------------------|---------|--------------------------|------------------|
| 11 | 3 | 51204-541 | SCREW-4-40 X 1/4 BD. HD. SEMS | | | STEEL |
| 10 | 1 | 30581-002 | SHIELD-TERMINAL | | | |
| 9 | 1 | 30581-001 | SHIELD-TERMINAL | | | |
| 8 | 6 | 51810-054 | WASHER- #10 SPLIT LOCK | | | BRONZE |
| 7 | 5 | 51806-014 | WASHER- #6 SPLIT LOCK | | | BRONZE |
| 6 | | | | | | |
| 5 | 1 | 30637-040 | PRIMARY-ASSEMBLY | | | |
| 4 | 6 | 50410-054 | NUT- 10-32 X 5/16 X 9/64 HEX | | | BRASS |
| 3 | 5 | 50406-034 | NUT- 6-32 X 1/4 X 5/64 HEX | | | BRASS |
| 2 | 1 | 32138-001 | PLATE-WIRING DIAGRAM | | | |
| 1 | 1 | 16043-001 | PLATE-NAME | | | |

| | | | |
|---|-----------|---|---|
| UNLESS OTHERWISE SPECIFIED DIMENSIONS ARE IN INCHES TOLERANCES ON | | Tyco Electronics Hartman Division, 175 N. DIAMOND STREET MANSFIELD, OHIO 44802 | |
| 2 PL DEC. | 3 PL DEC. | | |
| ± .06 | ± .010 | ± 1° | DR BY WSS 72/09/01 CHK BY AH 07/09/18 ENGR WER 07/09/18 MFG MJB 07/09/18 |
| MATERIAL | | SIZE C CODE IDENT 74063 | CONTACTOR-3PST NO. 20 AMP, 260/450V 400HZ DWG NO. B-329P |
| SCALE NONE | | SHEET | REF TE P/N 2-1616520-0 |