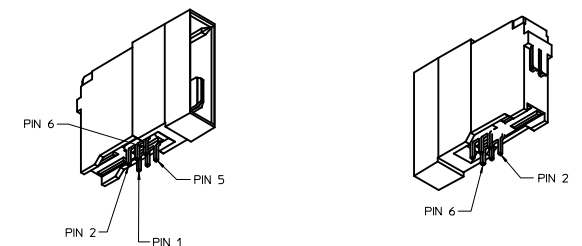
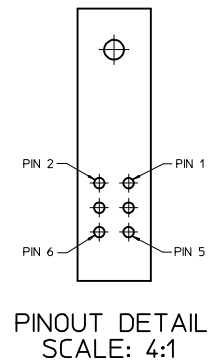
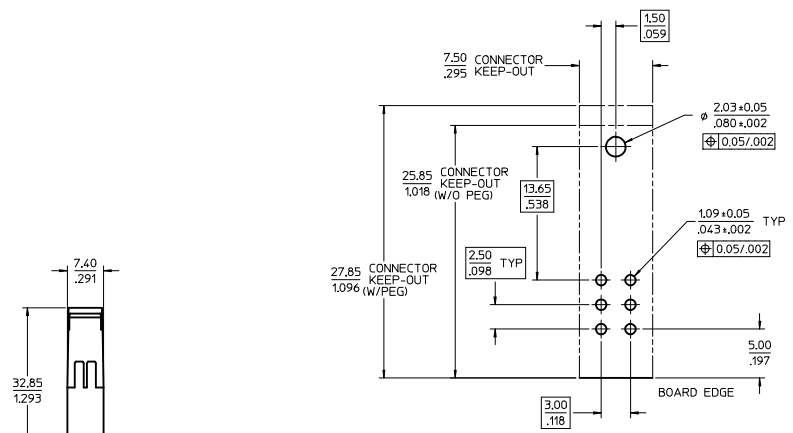
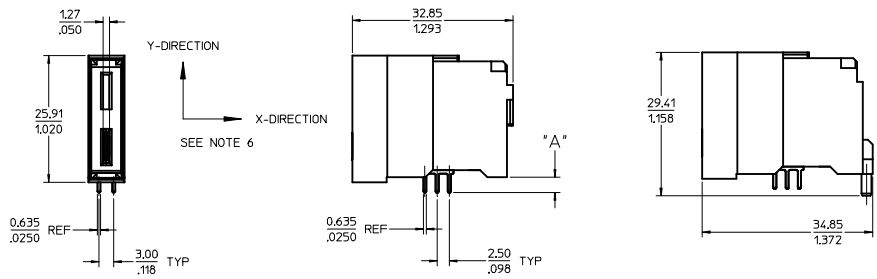


PART NUMBER	DESCRIPTION	DIM "A" PC TAIL LENGTH	PLATING
75561-5100	SHORT PC TAIL - NO PEG	3.077,121	30µ INCH MIN SELECT HARD GOLD IN CONTACT AREA WITH 100µ INCH MIN SELECT TIN IN TAIL AREA OVER 50µ INCH MIN NICKEL OVERALL
75561-5101	LONG PC TAIL - NO PEG	3.811,150	
75561-1510	SHORT PC TAIL - PEG	3.077,121	30µ INCH MIN SELECT HARD GOLD IN CONTACT AREA WITH 100µ INCH MIN SELECT TIN IN TAIL AREA OVER 50µ INCH MIN NICKEL OVERALL
75561-1511	LONG PC TAIL - PEG	3.811,150	

- NOTES:
1. MATERIALS:
- HOUSING: 30% GLASS FILLED, LCP 94V-0, COLOR: BLACK
- TERMINALS: COPPER ALLOY
PLATING: PER ES-88 - SEE CHART
 2. SEE CHART FOR REFERENCE DOCUMENTS
 3. PLUG MATES WITH RECEPTACLE ASSEMBLIES: 75545-5100 & 75545-5101
 4. MODULE IS DESIGNED FOR SOLDERING TO THE PCB
 5. MODULE ASSEMBLY IS RoHS COMPLIANT
 6. GATHERABILITY: +0.65/.026 X-DIRECTION
+1.30/.051 Y-DIRECTION

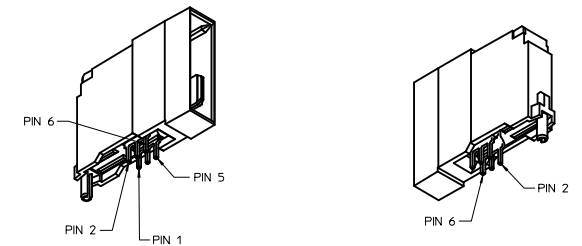


75561-5100 SHOWN
(W/O PEG)



75561-5*** SHOWN
(W/O PEG)

SAME AS 75561-5***
EXCEPT AS SHOWN



75561-1510 SHOWN
(W/PEG)

REFERENCE DOCUMENTS	
PS-75431-999	PRODUCT SPECIFICATION: PERFORMANCE AND RATINGS
SD-75555-***	FINAL ASSEMBLY CONFIGURATION DRAWING

CORRECTED HSG GRAPHICS EC NO: UCP2014-2193 2013/11/18 DRW: OULLES CHYKOMBANDURA 2013/11/19 APPR: APATEL 2013/12/10 REV: A5	QUALITY SYMBOLS	GENERAL TOLERANCES (UNLESS SPECIFIED)	DIMENSION STYLE	SCALE	DESIGN UNITS	THIRD ANGLE PROJECTION
	▽=0	4 PLACES ± --- ± ---	MM/IN	2:1	METRIC	⊙
	▽=0	3 PLACES ± --- ± .008				
	▽=0	2 PLACES ± 0.20 ± .013				
		1 PLACE ± 0.33 ± ---				
		ANGULAR ±1/2°				
		DRAFT WHERE APPLICABLE MUST REMAIN WITHIN DIMENSIONS				
			MATERIAL NO.	DATE	TITLE	
			SEE CHART	2005/04/19	POWERMASS 40 AMP MODULE, PLUG LOWER	
				2005/04/19	MOLEX INCORPORATED	
					DOCUMENT NO. SD-75561-101	
					SHEET NO. 1 OF 1	