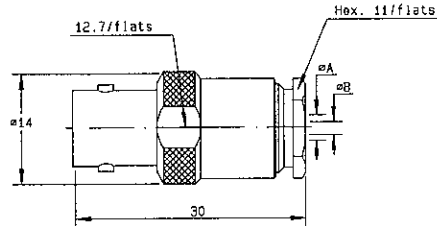
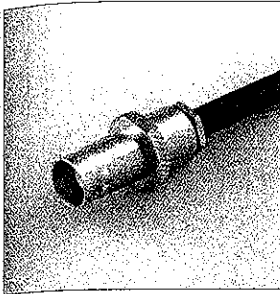
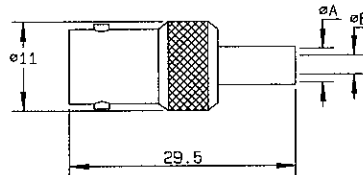
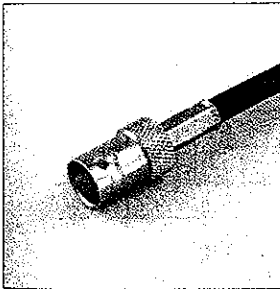


### STRAIGHT JACKS CLAMP TYPE



cable	part number	dimensions		captive center contact	assembly	note
		A	B			
5 /50/ S + D	R141 207 000	5.6	1.05	no	M01	
5 /50/ S + D	R141 208 000	5.6	1.05	yes	M01	
.141"	R141 227 000	3.65	1.05	no	M10	semi-rigid cable

### STRAIGHT JACKS FULL CRIMP TYPE FOR FLEXIBLE CABLES

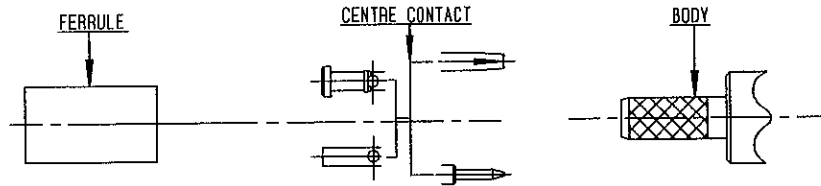


cable	part number	dimensions		captive center contact	assembly	note
		A	B			
2.6 /50/ S	R141 217 000		0.57	yes	M05	
5 /50/ S	R141 237 000*	5.5	1.05	yes	M07	single piece body
5 /50/ D	R141 220 000	5.5	1.05	yes	M07	single piece body

For others types of cables (75Ω, 93Ω or BT cables), please see "additional connectors" on page 36-37.

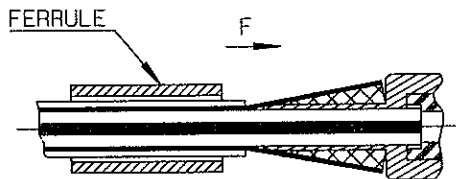
\* Packaging = 100 pieces.

### M 07 (flg)



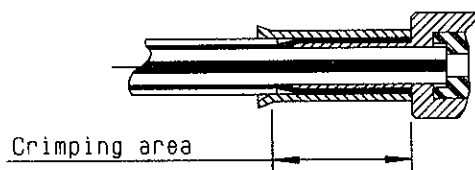
P/N	HEX. DIM. H	FERRULE		CENTER CONTACT	
		DIES INCLUDED	MIL STANDARD R282 293 000 (M22520/5-01)+DIES	DIES INCLUDED	MIL STANDARD R282 293 000 (M22520/5-01)+DIES
R141 082 000 R141 083 000 R141 182 000 R141 183 000	1,73-5,4	R282 223 000	R282 235 011 (M22520/5-11)	R282 223 000	R282 235 011 (M22520/5-11)
R142 184 000	1,73-6,48		R282 235 013 (M22520/5-13)		R282 235 013 (M22520/5-13)
R141 220 000 R141 237 000			R282 235 011 (M22520/5-11)		R282 235 011 (M22520/5-11)
R142 242 000			R282 235 013 (M22520/5-13)		R282 235 013 (M22520/5-13)
R141 292 000			1,73-5,4		R282 235 011 (M22520/5-11)
R142 295 000	1,79-10,54		R282 231 000		R282 235 116 (Y116 DANIELS)
R141 308 000 R141 332 500	1,73-5,4		R282 223 000		R282 235 011 (M22520/5-11)
R142 085 000	1,73-6,48		R282 235 013 (M22520/5-13)		R282 235 013 (M22520/5-13)
R142 095 000					R282 235 011 (M22520/5-11)
R142 083 000	5,4		R282 223 000		R282 235 011 (M22520/5-11)

3



- 3.1 Slide cable into the body until bottoms against insulator .
- 3.2 Slide ferrule over the braid .  
(In direction F)

4



- 4.1 Crimp the ferrule.
- 4.2 Cut the excess of braid .