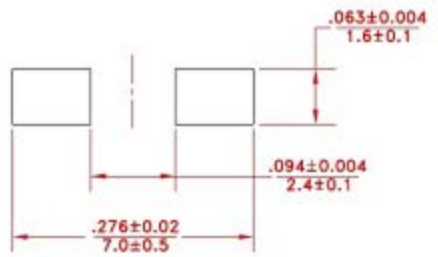
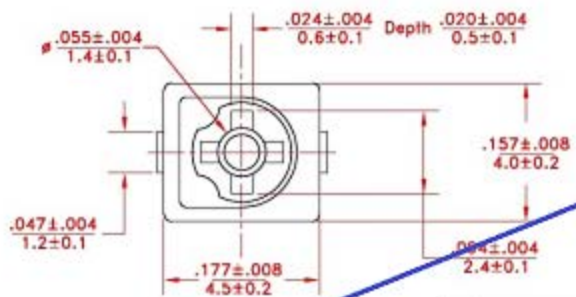


REV	DESCRIPTION	DATE	APP
00	NEW DRAWING	03/07/18	I.D.

*Updated- November 29,2022



STANDARD LAND PATTERN

cls	Part Number	Capacitance(pF)		Q at 1MHz (min.)	Rated voltage (V.D.C.)	Temperature Characteristics		Case color
		Min. (+0%)	Max. (+50/-0%)			Temp. Coefficient	Drift (pF max.)	
I	G3R086	1.4	3.0	300	100	NPO±200(0±200)		±0.1 Brown
II	G6R086	2.0	6.0	500	100	NPO±200(0±200)		±0.1 Blue
	G10086	3.0	10.0	500	100	NPO±300(0±300)		±0.15 White
III	G20086	4.5	20.0	500	100	N750±400(-750±400)		±0.3 Red
IV	G30086	6.5	30.0	300	100	N1200±500(-1200±500)		±0.3 Green
	G40086	8.5	40.0	300	100	N1200±500(-1200±500)		±0.5 Yellow
	G50086	1.4	*50.0	300	50	N750±300(-750±300)		±0.7 Black

SPECIFICATIONS:

1. Operating temperature range: -25°C to + 85°C
2. Insulation resistance: 10⁻⁴ megohms min
3. Dielectric withstanding voltage: Rated voltage x 2.2
4. Torque: 0.2 to 1.39 oz-in (15 to 100 g-cm)
5. Stable characteristics over a wide frequency range
6. Dielectric: PTFE
7. Designed to withstand flux baths and solder baths (with cover film type)
8. All dimensions in/mm.

TOLERANCES: (UNLESS NOTED)		EW Electronics		
DIGITAL: ±0.02 in ±0.5mm	MATERIAL:	SCALE: 8:1	DRAWN BY:	
FRACTIONAL: 1/64	TITLE: GXXX86	APPROVED:		
ANGULAR: 1°	DATE: 03/07/2018	DRAWING NUMBER: GXXX86	USED FOR:	
			REV:	00