

325541010-00 ✓ ACTIVE

MEAS | MEAS MS5541

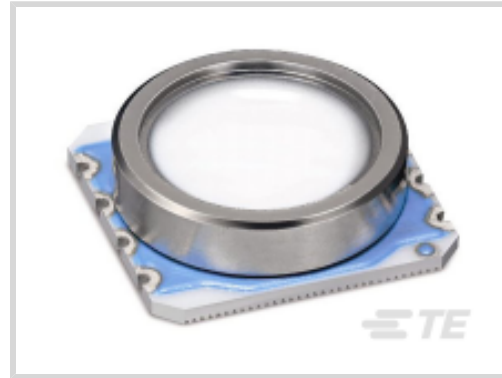
TE Internal #: 325541010-00

Digital Pressure and Altimeter Sensor Modules, Absolute, 30000 mbar, Output/Span 16 bit ADC, -400 to +500mbar, Supply Voltage 2.2 – 3.6 V, MEAS MS5541

[View on TE.com >](#)



Sensors > Pressure Sensors > Board Mount Pressure Sensors



Board Level Pressure Sensor Type: **Digital Pressure and Altimeter Sensor Modules**

Board Level Pressure Sensor Style: **Absolute**

Pressure: **30000 mbar**

Output/Span: **16 bit ADC**

Board Level Pressure Sensor Accuracy: **-400 to +500mbar**

Features

Product Type Features

Board Level Pressure Sensor Type	Digital Pressure and Altimeter Sensor Modules
Board Level Pressure Sensor Style	Absolute

Electrical Characteristics

Board Level Pressure Sensor Supply Voltage	2.2 – 3.6 V
--	-------------

Dimensions

Dimensions	6.2 x 6.4 mm [.24 x .25 in]
------------	-----------------------------

Usage Conditions

Operating Temperature Range	-40 – 85 °C [-40 – 185 °F]
-----------------------------	----------------------------

Operation/Application

Resolution	3
Pressure	30000 mbar
Output/Span	16 bit ADC
Board Level Pressure Sensor Accuracy	-400 to +500mbar

Packaging Features

Board Level Pressure Sensor Package	Surface Mountable
-------------------------------------	-------------------

Other



Sensor Options	No Option
----------------	-----------

Product Compliance

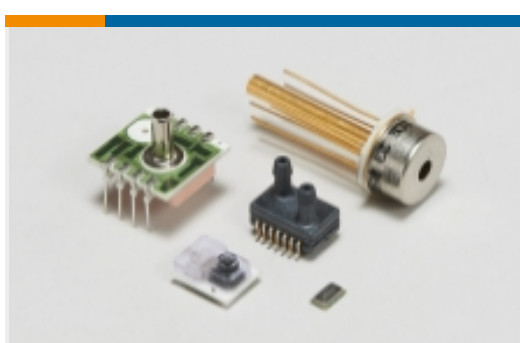
[For compliance documentation, visit the product page on TE.com>](#)

EU RoHS Directive 2011/65/EU	Compliant
EU ELV Directive 2000/53/EC	Out of Scope
China RoHS 2 Directive MIIT Order No 32, 2016	No Restricted Materials Above Threshold
EU REACH Regulation (EC) No. 1907/2006	Current ECHA Candidate List: JUNE 2023 (235) Candidate List Declared Against: JUNE 2023 (235) Does not contain REACH SVHC
Halogen Content	Not Yet Reviewed for halogen content
Solder Process Capability	Not reviewed for solder process capability

Product Compliance Disclaimer

This information is provided based on reasonable inquiry of our suppliers and represents our current actual knowledge based on the information they provided. This information is subject to change. The part numbers that TE has identified as EU RoHS compliant have a maximum concentration of 0.1% by weight in homogenous materials for lead, hexavalent chromium, mercury, PBB, PBDE, DBP, BBP, DEHP, DIBP, and 0.01% for cadmium, or qualify for an exemption to these limits as defined in the Annexes of Directive 2011/65/EU (RoHS2). Finished electrical and electronic equipment products will be CE marked as required by Directive 2011/65/EU. Components may not be CE marked. Additionally, the part numbers that TE has identified as EU ELV compliant have a maximum concentration of 0.1% by weight in homogenous materials for lead, hexavalent chromium, and mercury, and 0.01% for cadmium, or qualify for an exemption to these limits as defined in the Annexes of Directive 2000/53/EC (ELV). Regarding the REACH Regulation, the information TE provides on SVHC in articles for this part number is based on the latest European Chemicals Agency (ECHA) 'Guidance on requirements for substances in articles' posted at this URL: <https://echa.europa.eu/guidance-documents/guidance-on-reach>

Also in the Series | [MEAS MS5541](#)



Board Mount Pressure Sensors(1)

Customers Also Bought



Documents

CAD Files

[3D PDF](#)

3D

Customer View Model

[ENG_CVM_CVM_325541010-00_1.2d_dxf.zip](#)

English

Customer View Model

[ENG_CVM_CVM_325541010-00_1.3d_igs.zip](#)

English

Customer View Model

[ENG_CVM_CVM_325541010-00_1.3d_stp.zip](#)

English

By downloading the CAD file I accept and agree to the [Terms and Conditions](#) of use.

Datasheets & Catalog Pages

[Data sheet](#)

English