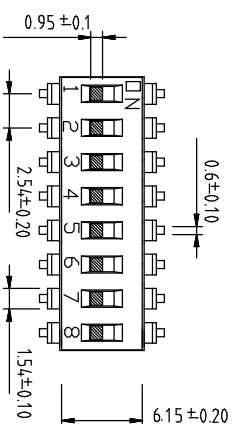
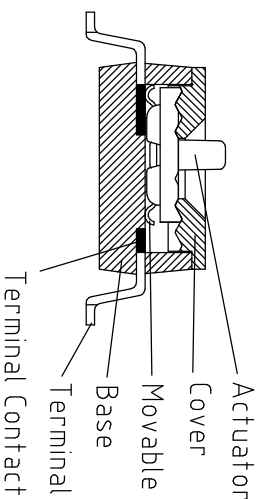
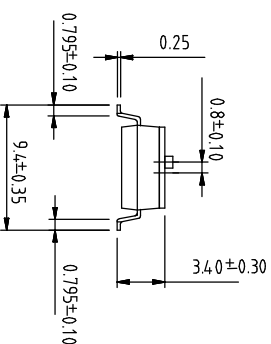
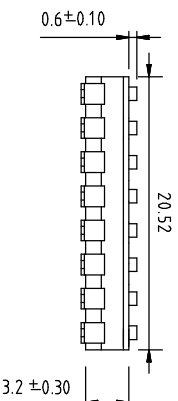


### DIMENSIONS

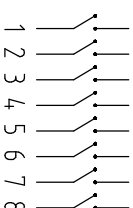


Poles(N)	A (mm)
01	2.85
02	5.28
03	7.82
04	10.36
05	12.90
06	15.44
07	18.05
08	20.52
09	23.06
10	25.55
12	30.60

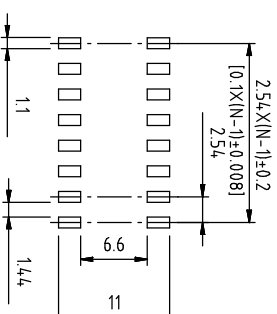


Part Name	Material	Finish
Base	PPS UL94 V0	Black
Cover	PPS UL94 V0	Black
Actuator	Nylon UL94 V0	White
Movable	Copper Alloy	Gold
Terminal Contact	Brass	Gold
Terminal	Brass	Gold / Tin

### SCHEMATIC



### P.C.B LAYOUT



DS IC XX L S X X X  
 1 2 3 4 5 6 7 8

位置	内容	表示
1	Series DS	DIP Switch
2	Type IC	IC Type
3	N Poles 01	POP
	02	POP
	03	POP
	04	POP
	05	POP
	06	POP
	07	POP
	08	POP
	09	POP
	10	POP
	12	POP
4	Actuator L	Extension
5	Terminal S	SMD type
6	Finish S	Full Gold
	G	Terminal-Tin plated
7	Finish E	4μ" Gold-plated
	F	10μ" Gold-plated
	A	12μ" Gold-plated
	B	20μ" Gold-plated
	G	30μ" Gold-plated
8	Packing R	Reel
	T	Tube

Rating (Resistive load):25mA 24VDC  
 Contact Resistance:100mΩ Max  
 Insulation Resistance:100MΩ Min  
 Dielectric Strength:500VAC 1 minute  
 Electrical life:1,000 cycles  
 Mechanical life:2,000 cycles  
 Operating Temperature:-30°C~85°C



公差 TOLERANCES .X±0.35 .XX±0.3 .XXX±0.15

单位 DIMENSION UNIT mm.

版本 VER	变更说明 CHANGE DESCRIPTION	日期 DATE	ECON NO.	核准 APPROVED BY	核对 CHECKED BY	日期 DATE	绘图 DRAWN BY	品名 TITLE	图号 DRAWING NO
						2024.01.10	赵华玲	DSP-DSIC08LSGET	XXXXXXX