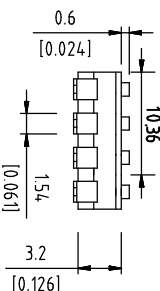
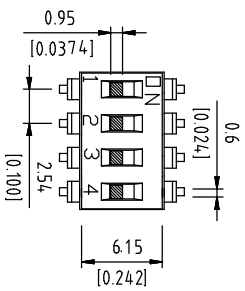
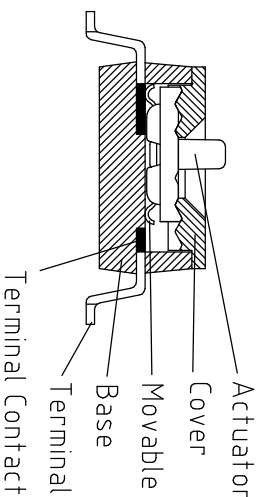
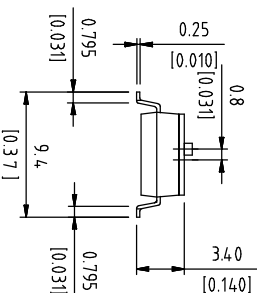


DIMENSIONS

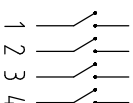


| Poles(N) | A (mm) |
|----------|--------|
| 01 | 2.85 |
| 02 | 5.28 |
| 03 | 7.82 |
| 04 | |
| 05 | 12.90 |
| 06 | 15.44 |
| 07 | 18.05 |
| 08 | 20.52 |
| 09 | 23.06 |
| 10 | 25.55 |
| 12 | 30.60 |

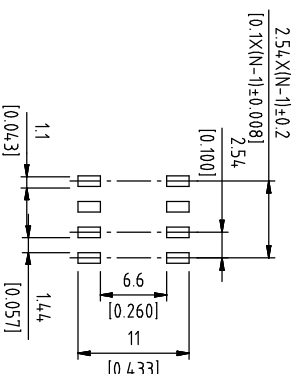


| Part Name | Material | Finish |
|------------------|---------------|------------|
| Base | PPS UL94 V0 | Black |
| Cover | PPS UL94 V0 | Black |
| Actuator | Nylon UL94 V0 | White |
| Movable | Copper Alloy | Gold |
| Terminal Contact | Brass | Gold |
| Terminal | Brass | Gold / Tin |

SCHEMATIC



P.C.B LAYOUT



DS IC XX L S X X X
1 2 3 4 5 6 7 8

| 位置 | 内容 | 表示 |
|----|----------|---|
| 1 | Series | DS DIP Switch |
| 2 | Type | IC IC Type |
| 3 | N Poles | 01 POP 02 POP 03 POP 04 POP 05 POP 06 POP 07 POP 08 POP 09 POP 10 POP 12 POP |
| 4 | Actuator | L Extension |
| 5 | Terminal | S SMD type |
| 6 | Finish | G Full Gold |
| 7 | Finish | S Terminal-Tin plated E 4μ " Gold-plated F 10μ " Gold-plated A 12μ " Gold-plated B 20μ " Gold-plated G 30μ " Gold-plated |
| 8 | Packing | R Reel T Tube |

Rating (Resistive load):25mA 24VDC
Contact Resistance:100mΩ Max
Insulation Resistance:100MΩ Min
Dielectric Strength:500VAC 1 minute
Electrical life:1,000 cycles
Mechanical life:2,000 cycles
Operating Temperature:-30°C~85°C



东莞市德芯电子有限公司
D-SWITCH ELECTRONICS CO.,LTD.

公差 TOLERANCES .X± 0.35 .XX± 0.3 .XXX± 0.15

单位 DIMENSION UNIT mm.

| 版本 VER | 变更说明 CHANGE DESCRIPTION | 日期 DATE | ECON NO. | 核准 APPROVED BY | 核对 CHECKED BY | 日期 DATE | 绘图 DRAWN BY | 品名 TITLE | 图号 DRAWING NO |
|--------|-------------------------|---------|----------|----------------|---------------|---------|-------------|-----------------|---------------|
| | | | | | | | | DSP-DSIC04LSGET | XXXXXXXX |