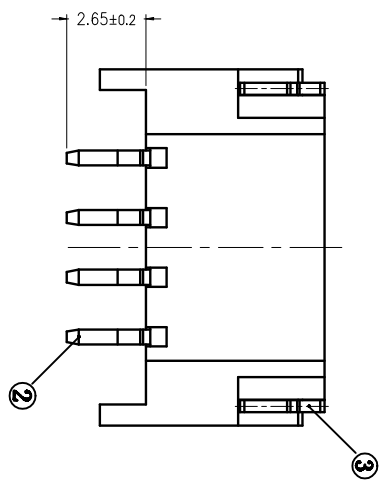
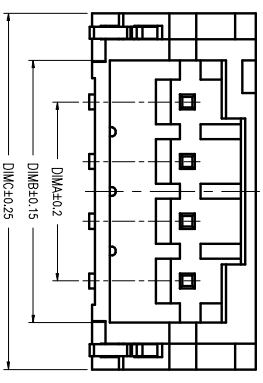
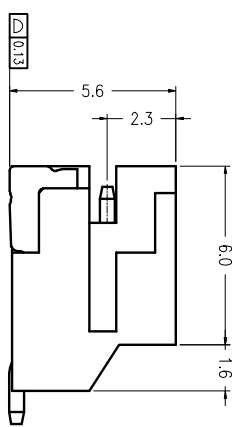
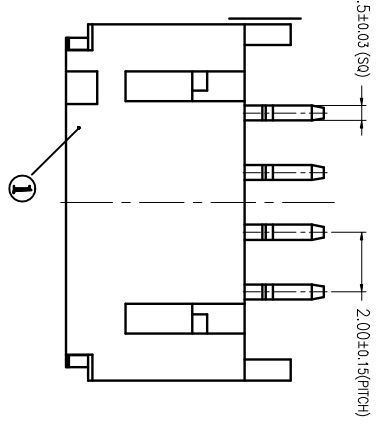
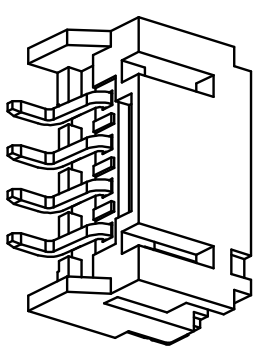
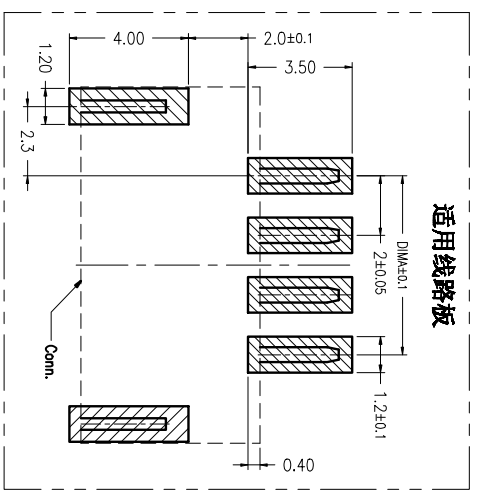


REV(版本)	DESCRIPTION(描述)	NAME(名字)	DATE(日期)

- 技术指标:**
1. 铜体表面应无油污、无毛边、无明显收锋、快沿、裂纹等现象。
 2. 温度范围: -40° C~85° C.
 3. 额定电压: 100V, AC/DC.
 4. 接触电阻: $\leq 20m\Omega$.
 5. 绝缘电阻: $\geq 1000M\Omega$.
 6. 额定电流: 3A, AC/DC.



适用线路板



序号	项目	描述	备注
1	铜体	LCP	
2	端子	黄铜	
3	弹片	黄铜	

CKT	Dim A	Dim B	Dim C
2	2.00	4.80	7.95
3	4.00	6.80	9.95
4	6.00	8.80	11.95
5	8.00	10.80	13.95
6	10.00	12.80	15.95
7	12.00	14.80	17.95
8	14.00	16.80	19.95
9	16.00	18.80	21.95
10	18.00	20.80	23.95
11	20.00	22.80	25.95
12	22.00	24.80	27.95
13	24.00	26.80	29.95
14	26.00	28.80	31.95
15	28.00	30.80	33.95
16	30.00	32.80	35.95
17	32.00	34.80	37.95
18	34.00	36.80	39.95
19	36.00	38.80	41.95
20	38.00	40.80	43.95

深圳市连欣科技有限公司

品名 (TITLE)	料号 (PART. NO)	比例 (SCALE)	单位 (UNITS)	页码 (SHEET)	尺寸 (SIZE)	版本 (REV)
Pitch: 2.00mm 卧式 SMT	XDFW-0920-XXP	1:1	MM	1 OF 1	A4	A
制图 (DWG)	校核 (CHECK)	审核 (APPV)				
XL10	Alex					

一般公差 (TOLERANCE)
X ±0.10 XX ±0.10
X ±0.20 XXX ±0.05
ANGLES ±1°