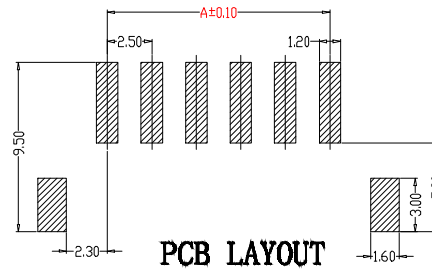
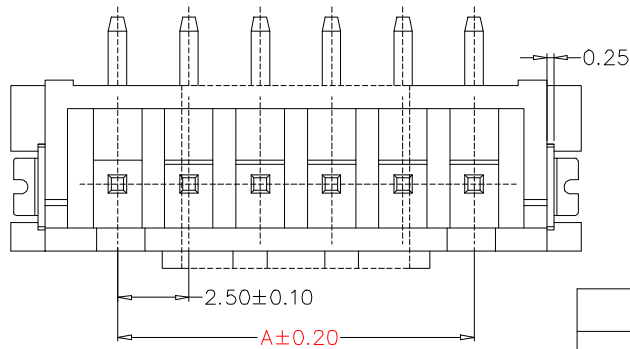
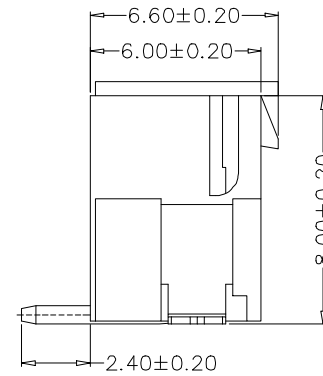
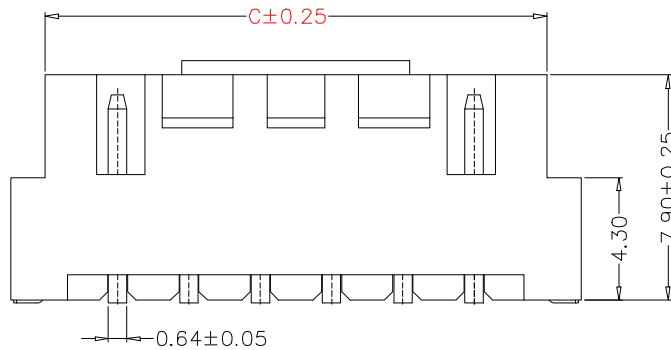


SPECIFICATIONS

- 1、Current Rating: 3A AC, DC
- 2、Voltage Rating: 250V AC, DC
- 3、Temperatuer Range: -25℃~+85℃
- 4、Contact Resistance: 20mΩ Max
- 5、Insulation Resistance: 1000MΩ Min
- 6、Withstanding Voltang: 1000V AC/minute
- 7、Material:Wafer LCP, PA6T, UL94V-0
PIN Brass Tin-plated
Solder tad Phosphoric bronze Tin-plated



Circuit	Part NO.	Dimensions mm		
		A	B	C
2	HC-HA-2ALT	2.50	10.00	7.50
3	HC-HA-3ALT	5.00	12.50	10.00
4	HC-HA-4ALT	7.50	15.00	12.50
5	HC-HA-5ALT	10.00	17.50	15.00
6	HC-HA-6ALT	12.50	20.00	17.50
7	HC-HA-7ALT	15.00	22.50	20.00
8	HC-HA-8ALT	17.50	25.00	22.50
9	HC-HA-9ALT	20.00	27.50	25.00
10	HC-HA-10ALT	22.50	30.00	27.50
11	HC-HA-11ALT	25.00	32.50	30.00
12	HC-HA-12ALT	27.50	35.00	32.50

		GENERAL TOLERANCE		制图 DRAWING		深圳市华灿天禄电子有限公司 ShenzhenhuacantianluELECTRONICS CO.,LTD			
		DIM TOL		审核 CHECK					
		X.X ±0.30		批准 APPROVAL		产品名称 TITLE	立贴	版本 REV.	A
1		初版发行		比例 SCALE		产品料号 PART NO.	HC-HA-NALT	单位 UNITS	mm
序号 No.	变更内容 MODIFY CONTENT	日期 MODIFY DATE	Angle ±3.0°	投影 Projection		材料 MATERIAL		页次 SHEET	1/1