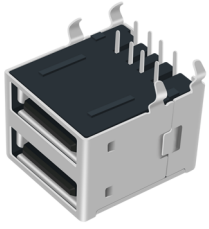


CONNECTORS



Operation: DIP-H16.4mm/侧插入式 USB 连接器 (Type-A)



LTEM NO.: USB-328 双接口型
(L17.0×W15.2×H16.4/ 2.0-USB-CONNECTORS)

2.0-USB-CONNECTORS

Technical parameter

PROJECT	LEVEL	A[better product]	B[average product]
	Contact Rating	50mA, 24V DC	
Electrical Properties	Initial Contact Resistance	30mΩ max.	50mΩ max.
	Insulation Resistance	100MΩ min.500V DC	Skey/PD: 100MΩ min.300V DC
	Withstand Voltage	500V AC for 1 minute	350 V AC for 1 minut
Durable Performance	There No Load	6,000 Cycles	5,000 Cycles
	Rated Load	5,000 Cycles	4,000 Cycles
	Storage temp.	-25℃~+75℃(Operating Temp:)	

表面插装 DIP

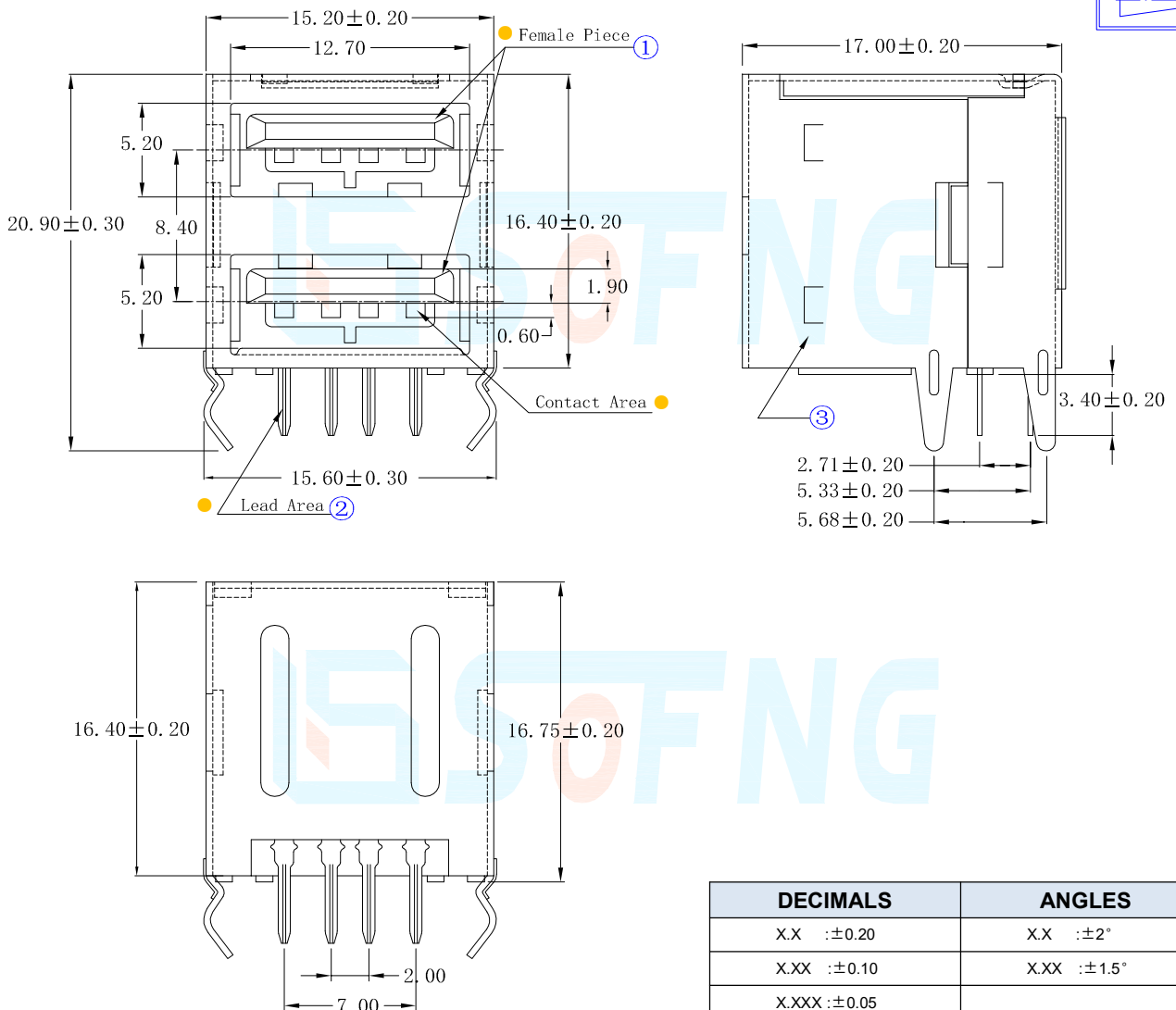
侧向导入 LATERAL

精密部品 NICETY

可靠 STABILIZE

适合环保 RoHS

Unit:mm



DECIMALS	ANGLES
X.X : ±0.20	X.X : ±2°
X.XX : ±0.10	X.XX : ±1.5°
X.XXX : ±0.05	

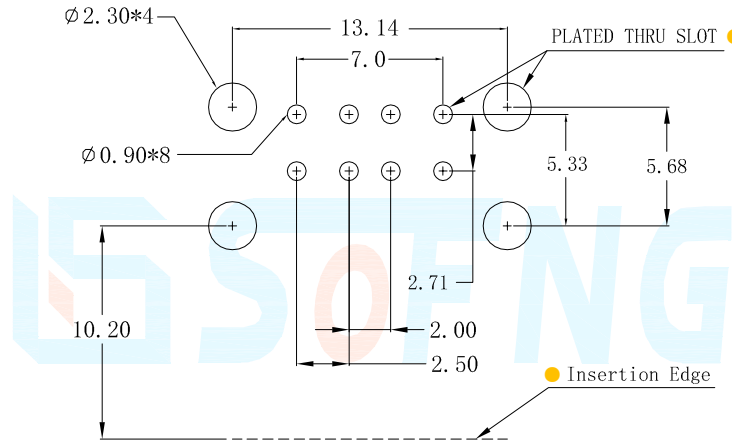
Operating Force

Inward
Exiting

5.0~8.0N. (1N.=100gram-force)
5.0~8.0N. (1N.=100gram-force)

Solder-ability (Max.)

IR Reflow: 235°C, 5sec. Manual: 350°C, 3sec.



Pin Definition



Material declaration

No.	NAME	Type	Description
① A	胶芯	1	PBT 热塑性塑胶[白色]
② B	接触端子	4×2	磷铜 C5191 (镀金 1u" /焊区雾锡)
③ C	外壳	1	黄铜 C2680/SPCC [镀镍 50u" min]

PRODUCT MEET THE REQUEST OF THE ROHS

MATTER	RoHs (PPM)
Cd	≤ 100
Pb	≤ 1000
Hg	≤ 1000
Cr6+	≤ 1000
PBB	≤ 1000
PBDE	≤ 1000

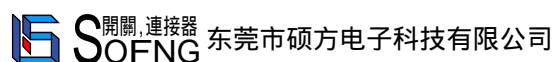
■ 手焊接时

项目	条件
焊接温度	350°C max.
连续焊接时间	3s max.
焊剂斗容量	60W max.



本品不屬於危害性廢棄物,須丟棄時可以委託回收商予以回收再生處理。
Products do not belong to

注記 NOTICE



1. 碩方公司擁有最終解釋權; The company reserves the right of final interpretation;
2. 文件禁止外洩、轉載; Leaked and reproduced prohibited;
3. 未經授權修改無效。Modify is invalid.

運送時本產品不要直接與水、酸鹼性化學物質接觸,或放置於含有以上氣體環境中,並且需要注意會有滑落、側翻的危險發生; 運輸過程中不能有碰撞或者擠壓,須保證溫度與濕度適中 [常溫 25°C, 濕度在 50°C 以內],不可導致材料變形或氧化。