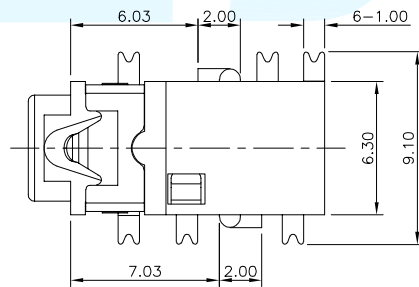
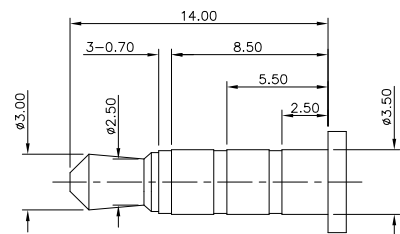
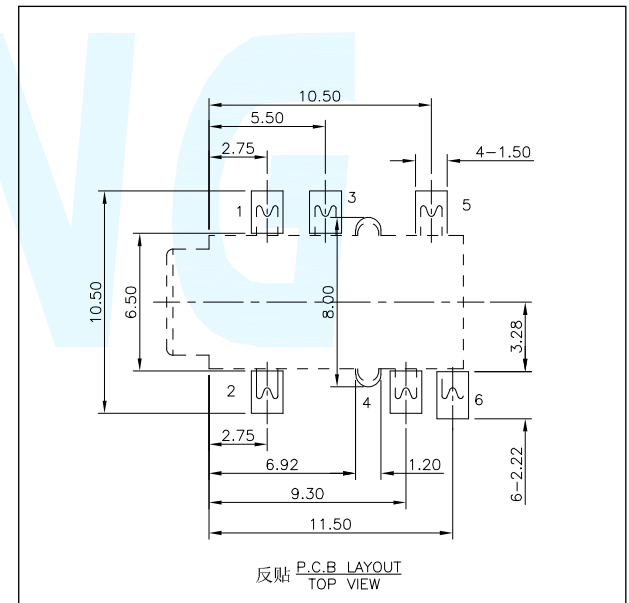
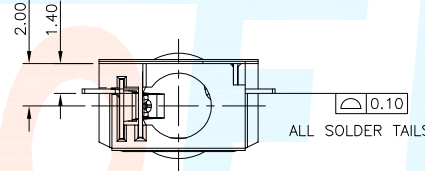
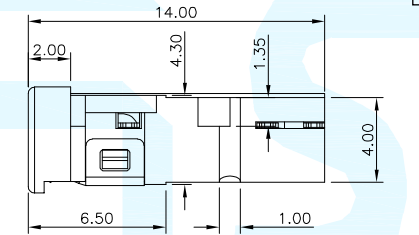
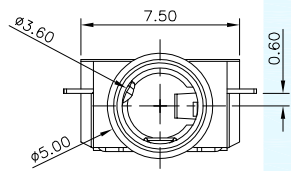


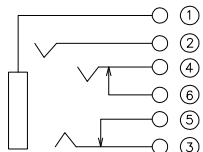
REVISION			
LTR	DESCRIPTION	DATE	APP
A0	NEW RELEASE	05/20/2020	PECK

Material declaration			
No.	NAME	Type	Description
①	接觸端子#1	1	C5191R-H (t=0.20mm)磷銅(銀基)
②	接觸端子#2	1	C5191R-H (t=0.20mm)磷銅(銀基)
③	接觸端子#3	1	C5191R-H (t=0.20mm)磷銅(銀基)
④	接觸端子#4	1	C5191R-H (t=0.20mm)磷銅(銀基)
⑤	接觸端子#5	1	C5191R-H (t=0.20mm)磷銅(銀基)
⑥	接觸端子#6	1	C5191R-H (t=0.20mm)磷銅(銀基)
⑦	基座	1	PA9T (Black)耐熱塑膠



($\phi 3.50\text{mm}$ 4 POLE PLUG DETAIL DRAWING)

SCHEMATIC



PROJECT		LEVEL	A[better product]	B[average product]
Electrical Properties	Contact Rating		0.25A, 24V DC	
	Initial Contact Resistance		30m Ω max.	50m Ω max.
	Insulation Resistance		100M Ω min.500V DC	Skey/PD: 100M Ω min.300V DC
Durable Performance	Withstand Voltage		500V AC for 1 minute	350 V AC for 1 min
	There No Load		6,000 Cycles	5,000 Cycles
	Rated Load		5,000 Cycles	4,000 Cycles
Storage temp.			-25 $^{\circ}\text{C}$ ~+75 $^{\circ}\text{C}$ (Operating Temp:)	

DIMENSION CLASSIFICATION

- : CRITICAL
- ☒ : MAJOR

TOLERANCE TABLE

.X	\pm	0.40
.XX	\pm	0.25
.XXX	\pm	0.10
ANGLE	\pm	2 $^{\circ}$

台灣碩方精密電子科技有限公司
TAIWAN SOFNG PRECISION ELECTRONIC CO., LTD



TITLE PJ-342E 四段式耳机插座
SMT沉板带开关常闭功能

開關, 連接器
SOFNG

PART NO.	PJ-342E	SERIES	SD106
APPROVED	Peck	DWG NO.	SOF-G006
CHECKED	Paul	SCALE	1:1
DRAWN	David	UNIT	m/m
		REV	AO
		SIZE	A4
		SHEET NO.	1/1