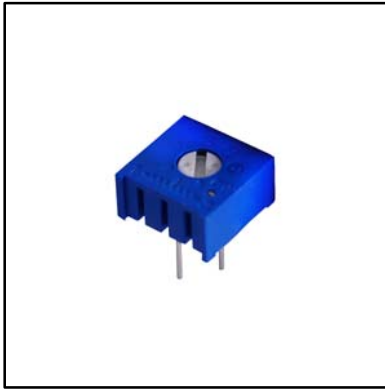


Features

- Economically Priced
- Replaces the Spectrol 63P Series
- RoHS compliant
- Industrial / Sealed
- Arrow and graduations for repeatable settings
- IC style pins for easier board insertion

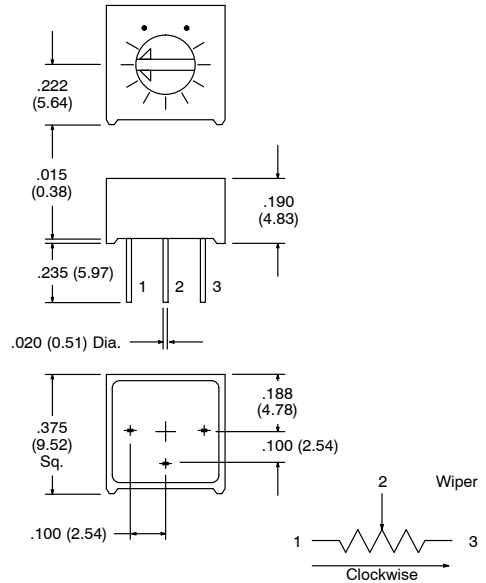


NTE Part No.	Equivalent Spectrol No.	Value (Ohms)	Diag No.
500E-0073	63P-101	100	T2e
500E-0076	63P-102	1K	T2e
500E-0077	63P-202	2K	T2e
500E-0078	63P-502	5K	T2e
500E-0079	63P-103	10K	T2e
500E-0080	63P-203	20K	T2e
500E-0082	63P-503	50K	T2e
500E-0083	63P-104	100K	T2e
500E-0084	63P-204	200K	T2e
500E-0086	63P-504	500K	T2e
500E-0087	63P-105	1M	T2e

Trimmer, 3/8" Square

Trimmer – Single Turn Cermet, Top Adjust

T2e



Specifications

Electrical

- Effective Travel:** 300° nom
- Resistance Range:** 100Ω to 1 Meg Ω
- Resistance Tolerance:** ±10%
- Absolute Minimum Resistance:** ≤ 1% or 2Ω
- Temperature Coefficient:** ±100 ppm/°C.
- Power Rating:** 1/2 Watt @ 70°C derated to 0 Watts @ 125°C
- Withstanding Voltage:** 600V_{AC}
- Insulation Resistance:** ≥ 1G Ω @ 100V_{AC}
- Contact Resistance Variation:** ≤ 3%

Mechanical

- Starting Torque:** ≤ 35 mN • m
- Rotation Life:** 200 cycles min with max change of ≤ 10% in total resistance
- Resistance Element:** Cermet

Environmental

- Operating Temperature:** -55°C to +125°C
- Electrical Endurance:** 1000 hours