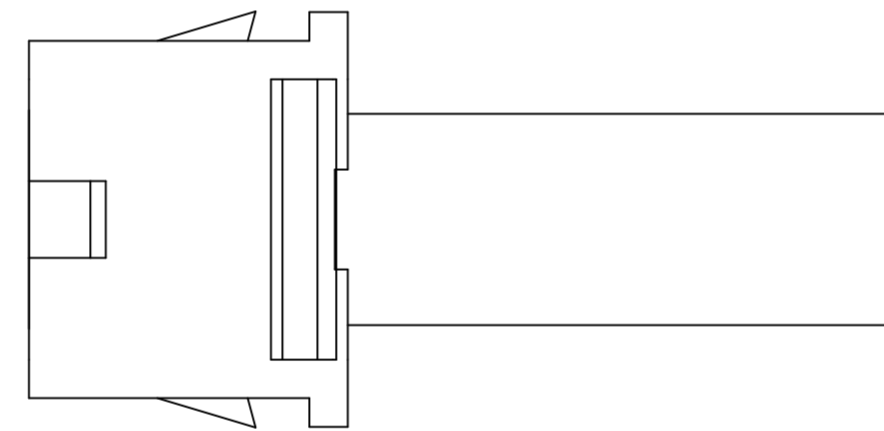
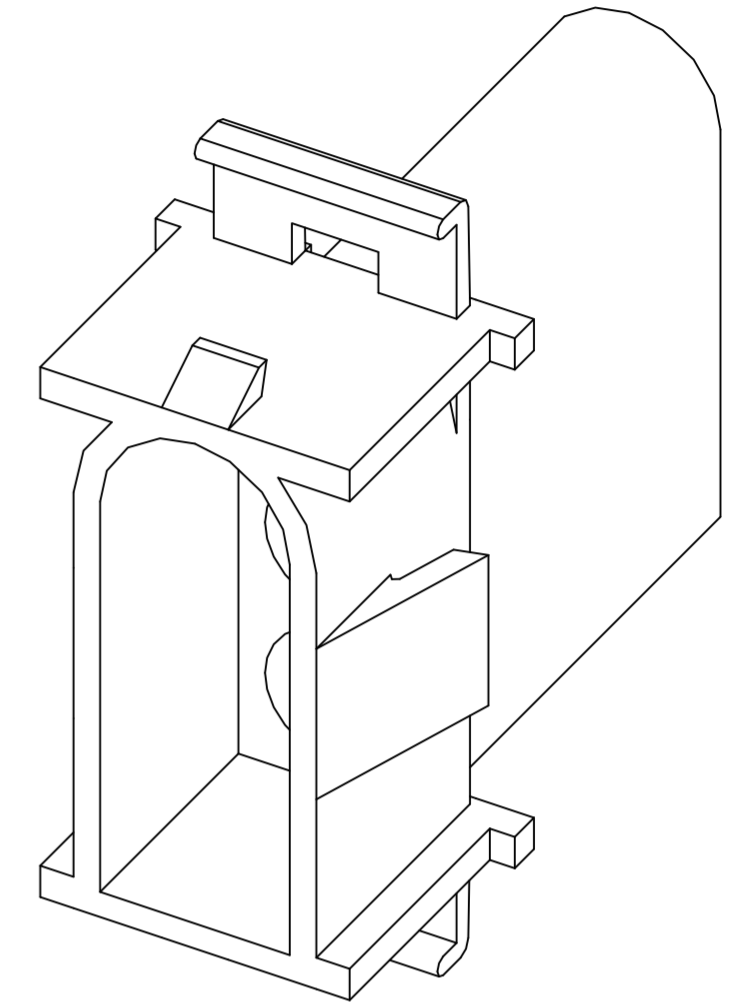
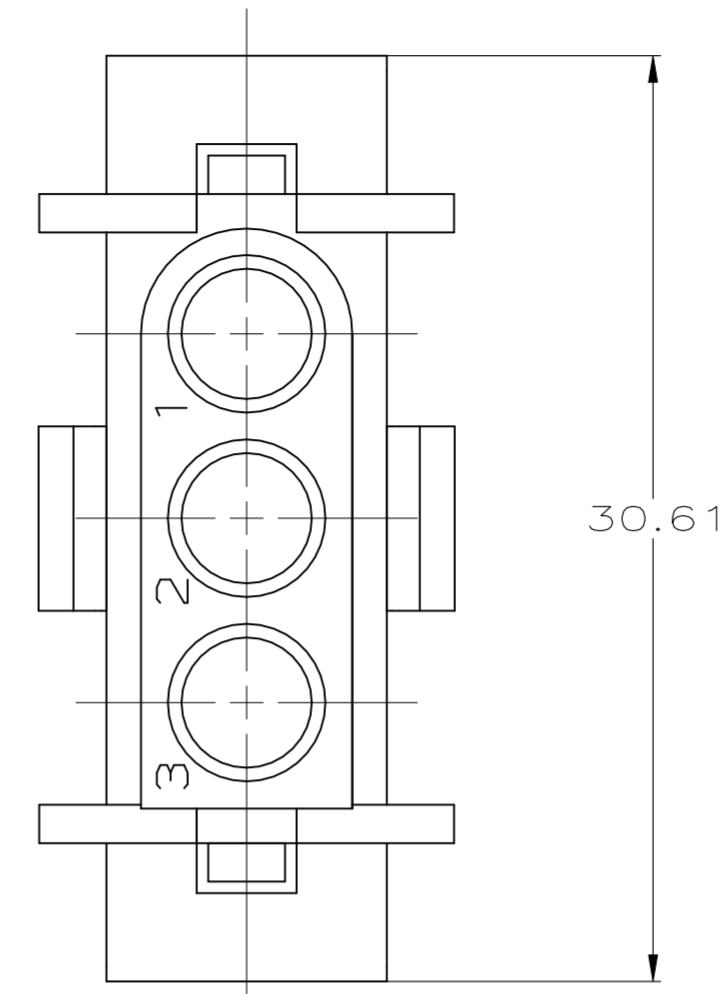
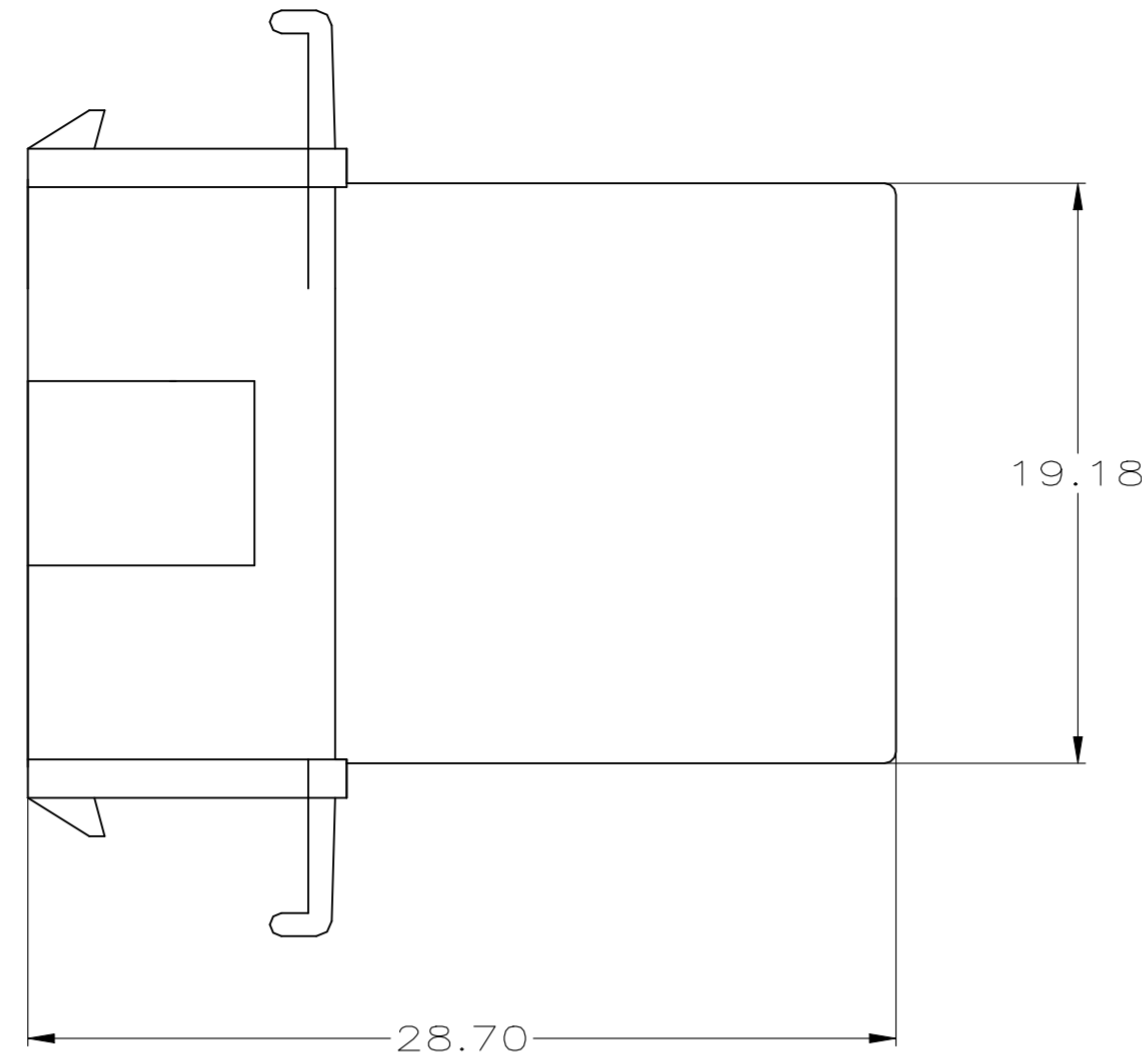
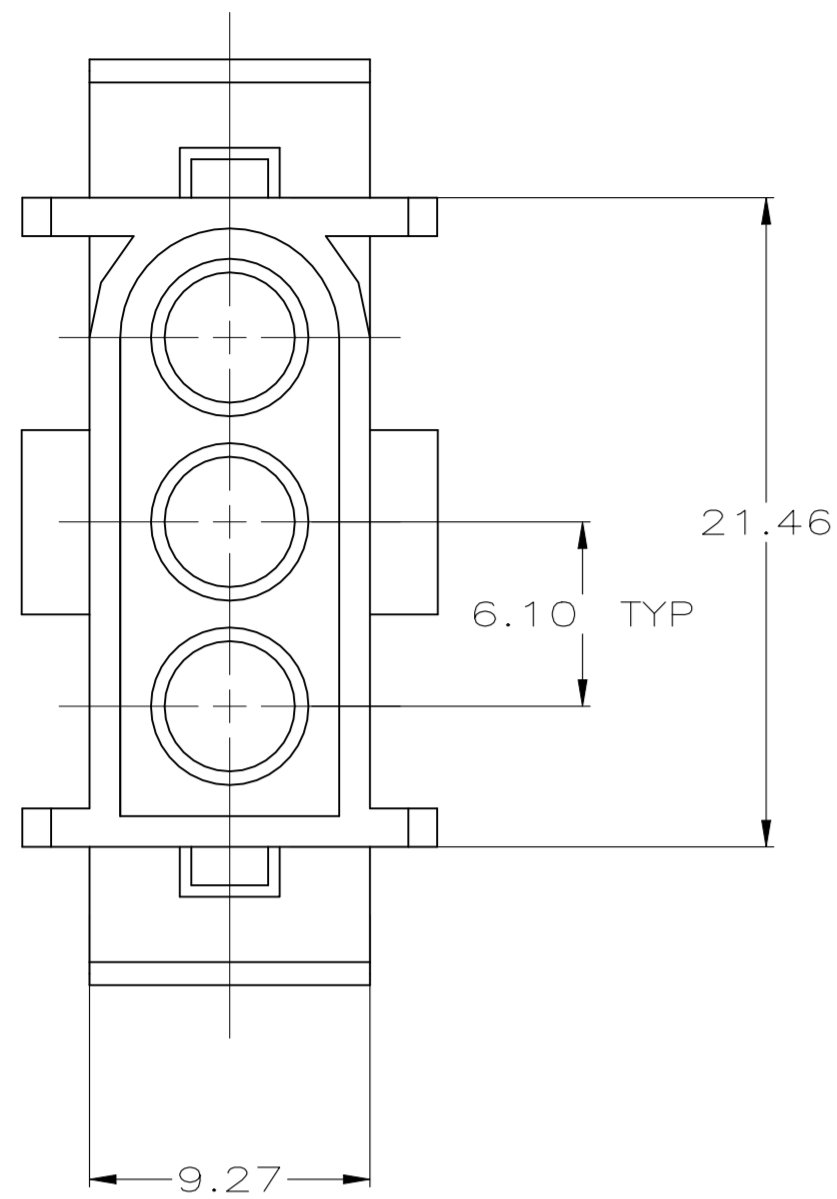
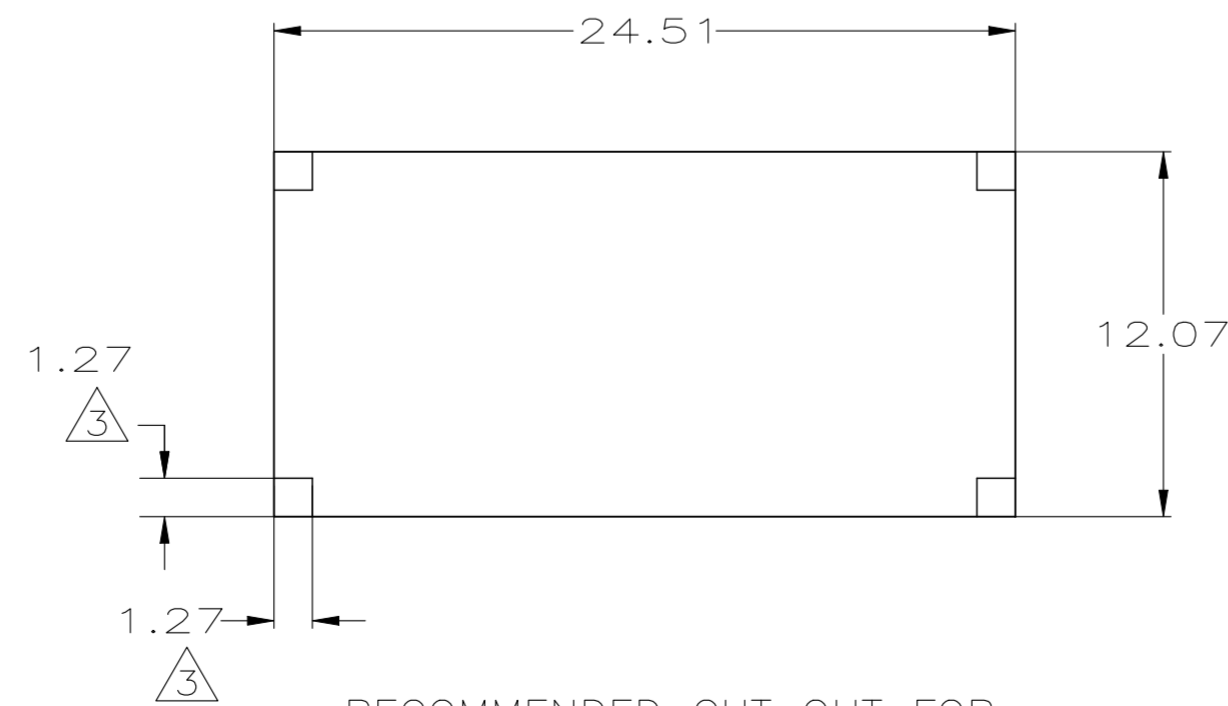


REVISIONS					
P	LTR	DESCRIPTION	DATE	DWN	APVD
F1		REVISED PER ECN-23-205457	28MAR2023	WLS	VS



- 1. TO BE USED WITH .140 SERIES PINS.
- 2. TO BE USED WITH PLUG 350346.
- 3. 1.27 x 1.27 TABS IN CORNERS OF CUT-OUT ARE OPTIONAL TO REDUCE HOUSING FLOAT IN PANEL.



RECOMMENDED CUT OUT FOR 0.76 - 1.65 THICK PANEL

METRIC

3.56	.140	21.46	.845		
1.65	.065	19.18	.755		
1.27	.050	12.07	.475	30.61	1.205
0.76	.030	9.27	.365	28.70	1.130
0.13	.005	6.10	.240	24.51	.965
MM	IN	MM	IN	MM	IN

CONVERSION TABLE

THIS DRAWING IS A CONTROLLED DOCUMENT.		DWN	J. HUFFMAN	8-14-95	NATURAL		NYLON, UL94-V2	1-350347-0
DIMENSIONS:		CHK	R. SWING	8-14-95	COLOR		MATERIAL	PART NUMBER
mm		APVD	C. MARTIN	8-15-95	TOLERANCES UNLESS OTHERWISE SPECIFIED:		TE Connectivity	
0 PLC ± -		PRODUCT SPEC		108-1032		CAP, 3 CIRCUIT, .140 MATE-N-LOK TM		
1 PLC ± -		APPLICATION SPEC		-		SIZE		
2 PLC ± 0.13		WEIGHT		-		A2		00779
3 PLC ± -		CUSTOMER DRAWING		SCALE		4:1		SHEET
4 PLC ± -		FINISH		-		C=350347		1 of 1
ANGLES ± 0°30'		RESTRICTED TO		-		REV		F1
SEE TABLE		MATERIAL		-		SCALE		4:1