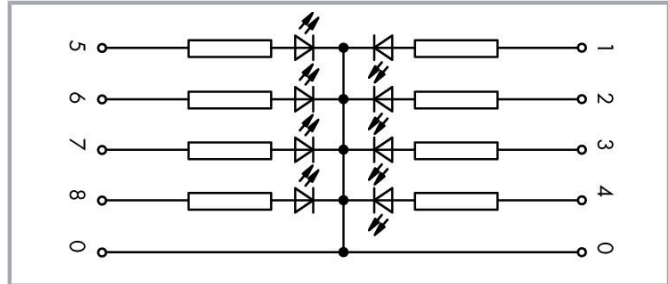


Data sheet | Item number: 286-822 **DISCONTINUED**
Component module with LED; Red LED; with common cathode



www.wago.com/286-822



Subject to changes. Please also observe the further product documentation!

WAGO GmbH & Co. KG
Hansastr. 27
32423 Minden
Phone: +49571 887-0 | Fax: +49571 887-169
Email: info.de@wago.com | Web: www.wago.com

Do you have any questions about our products?
We are always happy to take your call at +49 (571) 887-44222.



This item has been discontinued and is no longer available as of 28.07.2023.

Data

Electrical data

Nominal operating voltage	DC 24 V
Operating voltage	20 ... 26 VDC
Current consumption at nominal supply voltage	≤ 5.1 mA (per LED)

Physical data

Width	25 mm / 0.984 inches
Height from upper-edge of DIN-rail	82.5 mm / 3.25 inches
Depth	52 mm / 2.047 inches

Mechanical Data

Mounting type	Pluggable module for receptacle terminal blocks
Housing design	Plug for carrier terminal blocks

Material data

Fire load	0.739 MJ
Weight	28.7 g

Environmental requirements

Ambient temperature (operation)	-25 ... +40 °C
Relative humidity	5 ... 95 % (no condensation permissible)
Operating altitude (max.)	2000 m

Commercial data

Product Group	6 (INTERFACE ELECTRONIC)
eCl@ss 10.0	27-37-12-92
eCl@ss 9.0	27-37-92-16
ETIM 8.0	EC002024
ETIM 7.0	EC002024
Recupel Type	
ECCN	NO DATA
PU (SPU)	10 (1) pcs

Subject to changes. Please also observe the further product documentation!




Packaging type	box
Country of origin	DE
GTIN	4045454397494
Customs tariff number	85369010000
End of Sale	2023-07-28
End of Production	2024-04-30
End of Delivery	2024-05-30
End of Service and Repair	2024-06-30

Environmental Product Compliance




RoHS Compliance Status	Compliant, No Exemption
------------------------	-------------------------

Optional accessories

Marking accessories

Marker	
	<p>Item no.: 209-701 WSB marking card; as card; not stretchable; plain; snap-on type; white</p> <p style="text-align: right;">www.wago.com/209-701</p>

Terminal blocks

Terminal block for pluggable modules	
	<p>Item no.: 280-629 Terminal block for pluggable modules; 10-pole; with 4-conductor terminal blocks; with orange separator; for DIN-rail 35 x 15 and 35 x 7.5; 2.5 mm²; CAGE CLAMP®; 2,50 mm²; gray</p> <p style="text-align: right;">www.wago.com/280-629</p>
	<p>Item no.: 280-639 Terminal block for pluggable modules; 10-pole; with 2-conductor terminal blocks; with orange separator; for DIN-rail 35 x 15 and 35 x 7.5; 2.5 mm²; CAGE CLAMP®; 2,50 mm²; gray</p> <p style="text-align: right;">www.wago.com/280-639</p>
	<p>Item no.: 280-765 Terminal block for pluggable modules; 10-pole; with 4-conductor terminal blocks; with marker carrier; with orange separator; for DIN-rail 35 x 15 and 35 x 7.5; 2.5 mm²; CAGE CLAMP®; 2,50 mm²; gray</p> <p style="text-align: right;">www.wago.com/280-765</p>

Downloads

Documentation

Bid Text

286-822 doc - Datei	2019 Mar 4	doc 23.6 kB	Download
286-822 X81 - Datei	2019 Feb 19	xml 2.9 kB	Download

Subject to changes. Please also observe the further product documentation!

WAGO GmbH & Co. KG
Hansastr. 27
32423 Minden
Phone: +49571 887-0 | Fax: +49571 887-169
Email: info.de@wago.com | Web: www.wago.com

Do you have any questions about our products?
We are always happy to take your call at +49 (571) 887-44222.



Instruction Leaflet

pdf
1.3 MB Download

Additional Information

Disposal and Recycling	V 1.1.0	pdf	Download
Electrical and electronic equipment, Batteries, Packaging	2022 Aug 18	2.2 MB	

CAD/CAE-Data

CAD data

2D/3D Models 286-822	URL	Download
----------------------	-----	----------

CAE data

WSCAD Universe 286-822	URL	Download
------------------------	-----	----------

ZUKEN Portal 286-822	URL	Download
----------------------	-----	----------

Asset Administration Shell

Asset Administration Shell 286-822	URL	Download
------------------------------------	-----	----------

Environmental Product Compliance

Compliance Search

Environmental Product Compliance 286-822	URL	Download
Component module with LED; Red LED; with common cathode		

Installation Notes

Subject to changes. Please also observe the further product documentation!