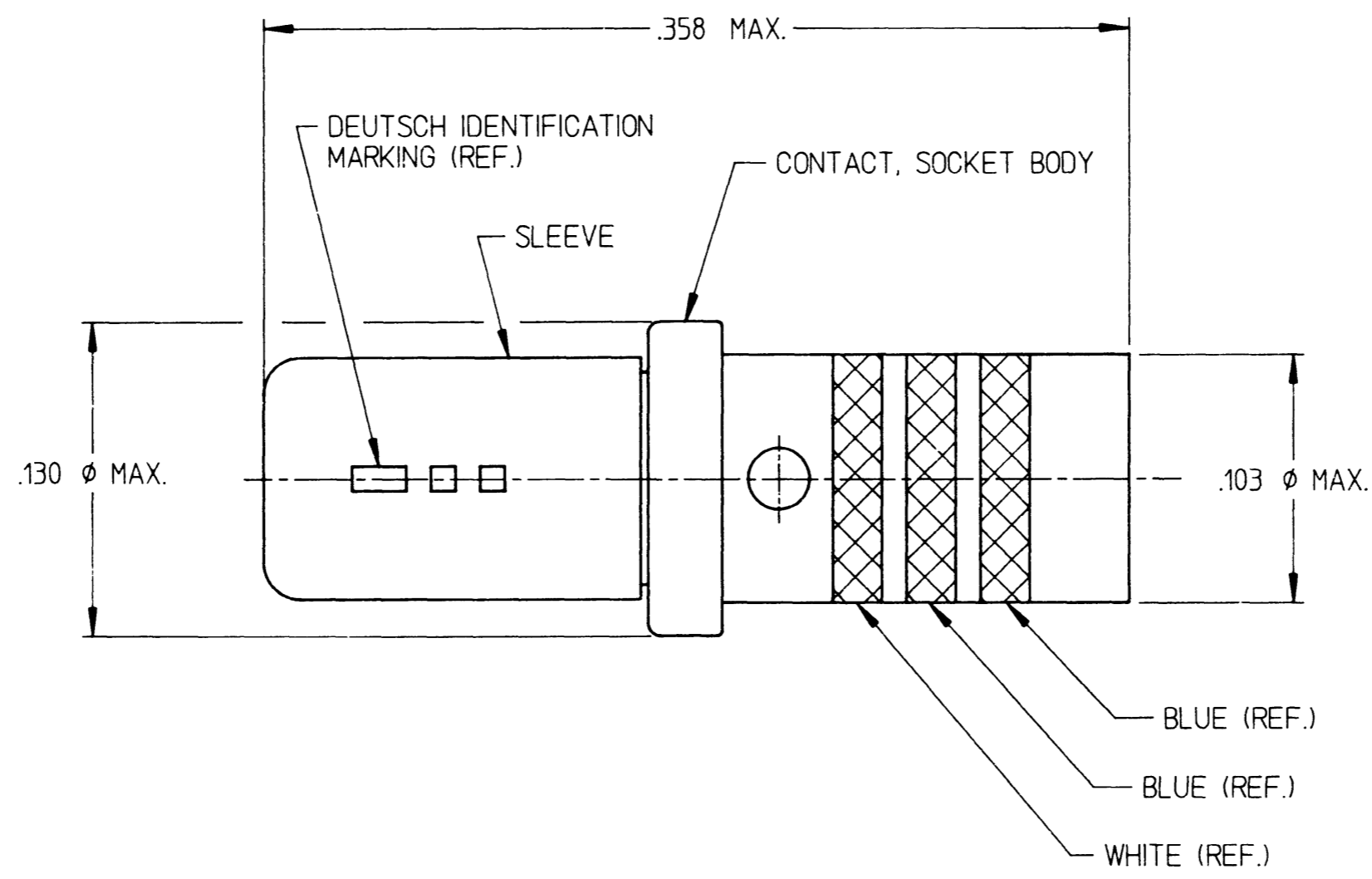


N/C 1662-214-1631

REVISIONS			
REV	DESCRIPTION	DATE	APPROVED
N/C	NEW RELEASE PER E.O. A12052	7-11-91	P



- 3. FINISH: BODY - GOLD PER MIL-G-45204, TYPE II, CLASS 1, OVER SUITABLE UNDERPLATE (EXCLUDING SILVER)
SLEEVE - PASSIVATED
- 2. MATERIAL: BODY - PER MIL-C-39029, TYPE A
SLEEVE - STAINLESS STEEL
- 1. ALL DIMENSIONS ARE IN INCHES UNLESS OTHERWISE SPECIFIED.

NOTE:

SIGNATURE & DATE	
DR	HARRINGTON 07/10/91
CHK	<i>J. Powell</i> 7-11-91
PE	<i>R. J. Powell</i> 07/10/91
APPD	
SCALE	NONE WT ———

CONTACT, SOCKET
CTS TYPE
SIZE 16
WITH SPECIAL COLOR BANDS

ENVELOPE

CP	MATL CODE
DEUTSCH ENGINEERED CONNECTING DEVICES <small>Municipal Airport Banning, California</small>	
B	1662-214-1631
DWG SIZE	CODE 11139 SHEET 1 OF 1

16622141631ENV