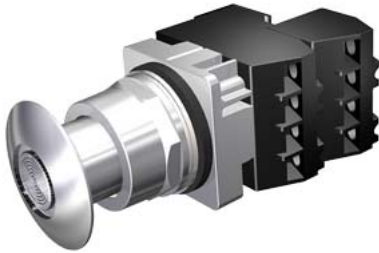


30mm Command/52, Chrome Finish Heavy Duty, Watertight/Oiltight Complete Metal Unit Illuminated Push-Pull Operator Transformer type, 600V AC Incandescent Lamp Mushroom Head Cap Small 1 3/4" (44.5 mm) Metal, Chrome with Clear Lens 3 Position Momentary 1 N.C.+1 N.C. Extra Late Break Heavy Duty Contacts, A600/P600 UL Listed, CSA Certified NEMA 1,3,3R,4,4X,12,13 & Automotive Standards



Enclosure	
number of command points	1
delivery state as a kit	No
Actuator	
product extension optional light source	Yes
number of contact modules	2
type of unlocking device	without
number of switching positions	3
Front ring	
product component front ring	Yes
design of the front ring	standard
material of the front ring	metal
Contact block/ lampholder	
number of lampholders	1
Display	
number of LED modules	0
General technical data	
product function positive opening	No
product component	
• lamp transformer	Yes
• light source	Yes
insulation voltage rated value	600 V
type of voltage	
• of the operating voltage	AC
• of the input voltage	AC
surge voltage resistance rated value	4 kV
• protection class IP	IP66
• protection class IP of the terminal	IP20
thermal current	10 A
Supply voltage	
type of voltage of the supply voltage of the light source	AC
supply voltage 1 of the light source at AC at 60 Hz rated value	6 V
Auxiliary circuit	
number of NC contacts for auxiliary contacts	2
number of NO contacts for auxiliary contacts	0
operational current at AC-15	
• at 110 V rated value	60 A
• at 230 V rated value	30 A
• at 400 V rated value	15 A

• at 500 V rated value	12 A
<b>Inputs/ Outputs</b>	
output voltage 1 of the lamp transformer rated value	6 V
<b>Connections/ Terminals</b>	
• type of electrical connection	screw-type terminals
tightening torque of the screws in the bracket maximum	20 N·m
tightening torque [lbf·in] with screw-type terminals	8 ... 8 lbf·in
<b>Lamp</b>	
color of the light source	clear
<b>Ambient conditions</b>	
ambient temperature	
• during operation	-35 ... +70 °C
• during storage	-40 ... +85 °C
<b>Installation/ mounting/ dimensions</b>	
shape of the installation opening	round
<b>Further information</b>	
<p>Information on the packaging  <a href="https://support.industry.siemens.com/cs/ww/en/view/109813875">https://support.industry.siemens.com/cs/ww/en/view/109813875</a></p> <p>Information- and Downloadcenter (Catalogs, Brochures,...)  <a href="https://www.siemens.com/ic10">https://www.siemens.com/ic10</a></p> <p>Industry Mall (Online ordering system)  <a href="https://mall.industry.siemens.com/mall/en/en/Catalog/product?mlfb=US2:52PP3KAU">https://mall.industry.siemens.com/mall/en/en/Catalog/product?mlfb=US2:52PP3KAU</a></p> <p>Cax online generator  <a href="http://support.automation.siemens.com/WWW/CAXorder/default.aspx?lang=en&amp;mlfb=US2:52PP3KAU">http://support.automation.siemens.com/WWW/CAXorder/default.aspx?lang=en&amp;mlfb=US2:52PP3KAU</a></p> <p>Service&amp;Support (Manuals, Certificates, Characteristics, FAQs,...)  <a href="https://support.industry.siemens.com/cs/ww/en/ps/US2:52PP3KAU">https://support.industry.siemens.com/cs/ww/en/ps/US2:52PP3KAU</a></p> <p>Image database (product images, 2D dimension drawings, 3D models, device circuit diagrams, EPLAN macros, ...)  <a href="http://www.automation.siemens.com/bilddb/cax_de.aspx?mlfb=US2:52PP3KAU&amp;lang=en">http://www.automation.siemens.com/bilddb/cax_de.aspx?mlfb=US2:52PP3KAU&amp;lang=en</a></p>	

last modified:

5/31/2021 